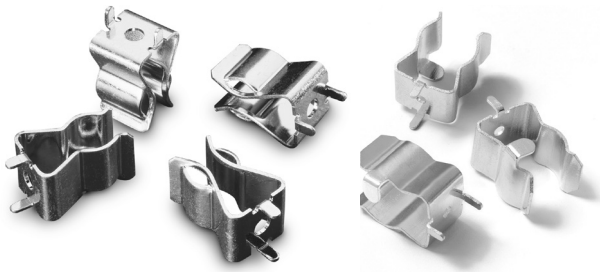


105/106/125 Series

Circuit Board Mount Clips for 10mm (13/32") Diameter Fuses

**Traditional Type: 105/125 Series****Low Profile Type: 106 Series**

Product Characteristics

	105 Series	125 Series	106 Series
Compatible Fuse Size	10mm (13/32") Diameter Fuses		
Current Levels	15A max	30A max	15A max

Agency Approval

Agency	Agency File Number		
	105 Series	125 Series	106 Series
cUL US	E14721		N/A

Ordering Information

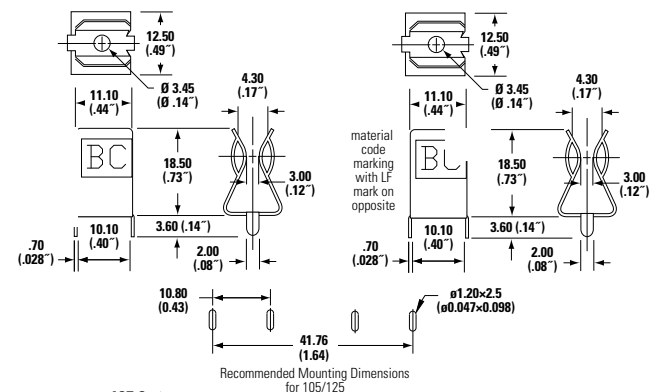
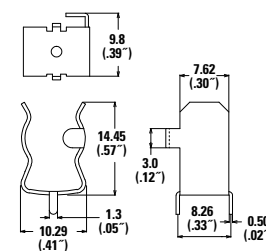
Ordering No.	Catalog No.	Clip Material*	Plating	Style	Packaging
01050003H	105 003	Spring Brass	Tin-plated	Ear	Bulk/100pcs
01250003H	125 003	Beryllium Copper	Tin-plated	Ear	Bulk/100pcs
01060001Z	106 001	Phosphor Bronze	Tin-plated	Ear	Bulk/100pcs

"H" = std. package 100 pcs per pack
 "Z" = for bulk package

Additional Information

**Resources**
105 Series**Accessories**
105 Series**Samples**
105 Series**Resources**
106 Series**Accessories**
106 Series**Samples**
106 Series**Resources**
125 Series**Accessories**
125 Series**Samples**
125 Series

Product Dimensions mm (inches)

**105 003**
Device Dimensions**125 003**
Device Dimensions**106 001**
Device Dimensions

Disclaimer Notice - Information furnished is believed to be accurate and reliable. However, users should independently evaluate the suitability of and test each product selected for their own applications. Littelfuse products are not designed for, and may not be used in, all applications. Read complete Disclaimer Notice at: www.littelfuse.com/disclaimer-electronics.