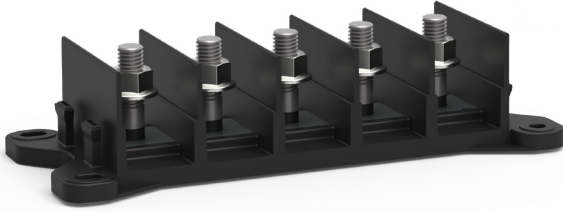
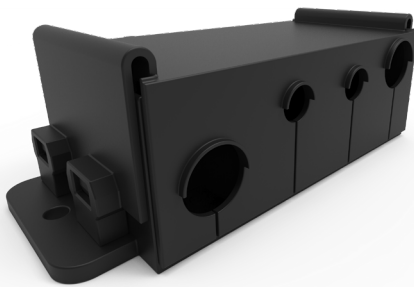


# ZCASE® 4P-5P SERIES

## 400 A Bolt-Down Fuse Holders



FHZ415



FHZ416

### Description

ZCASE® 4P-5P Series 400 A Bolt-Down Fuse Holders are four-position and five-position automotive fuse blocks that enable circuit-protected power distribution with ZCASE® fuses (sold separately). These DC power distribution blocks have thermoplastic bases and protective covers with UL 94 V-0 flammability ratings and have been tested to ISO 16750-3 standards for shock and vibration.

### Web Resources

Download 2D print, installation guide and technical resources at: [littelfuse.com/4p-5pseries](http://littelfuse.com/4p-5pseries)

### Ordering Information

PART NUMBER	DESCRIPTION	CONTINUOUS CURRENT RATING	FUSE TYPE	MOUNTING METHOD	MAX VOLTAGE RATING
FHZ416	32 V 400 A Four-Position Bolt-Down Fuse Holder Base and Cover	400 A	ZCASE	M8 Stud Mount Hole	32 V
FHZ415	80 V 400 A Five-Position Bolt-Down Fuse Holder Base	400 A	ZCASE	M10 Stud Mount Hole	80 V
FHZ515	Five-Position Fuse Holder Cover	-	-	-	-

### Specifications

<b>Max Voltage Rating:</b>	32 V, 80 V
<b>Agency Approval - Shock:</b>	ISO16750-3 4.3
<b>Agency Approval - Vibration:</b>	ISO16750-3 4.1.2.7
<b>Current Rating Continuous:</b>	400 A
<b>Flammability Rating:</b>	UL 94 V-0
<b>Fuse Type:</b>	ZCASE®
<b>Input Terminals:</b>	M8 Stud Mount Hole
<b>Output Terminals:</b>	M8 Stud, M10 Stud
<b>Recommended Torque:</b>	M8 Nut: 10-14 N-m, M 10 Nut: 6-8 N-m
<b>Operating Temperature (C):</b>	-40°C to 85°C

### Applications

- Heavy Trucks
- Medium-Duty Trucks
- Construction Equipment
- Agricultural Vehicles

### Features and Benefits

- Four-position fuse holders accept ZCASE® M8 fuses and are rated for up to 32 V
- Five-position fuse holders accept ZCASE® M10 fuses and are rated for up to 80 V
- Thermoplastic base and cover have a UL 94 V-0 flammability rating
- Tested to ISO 16750-3 4.3 and ISO 16750-3 4.1.2.7 standards for shock and vibration to withstand harsh conditions that are common for commercial vehicles