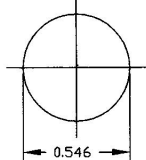
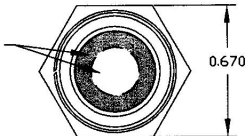


MOUNTING HOLE



LENS, SEE CHART

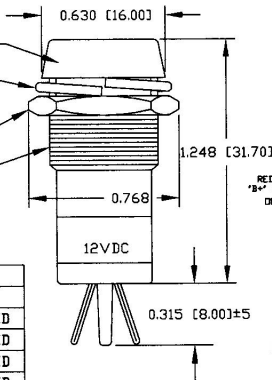


BEZEL, CHROME PLATED

WASHER

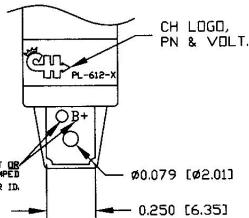
HEX NUT

THREAD: M14, P1.0



Revision Control Record

Rev.	Description of Change	ECN No.	Date
A	NEW PART	04302	08/18/04



RED PAINT DOT OR
"B+" METAL STAMPED
ON TERM. FOR ID.

NOTES:

1. ALL DIMENSIONS ARE REFERENCE.
2. WASHER AND HEX NUT NICKEL PLATED.
3. PILOT LIGHT FITS UP TO .281" THICK PANEL

PL-612-R	RED	12V, LED
PL-612-G	GREEN	12V, LED
PL-612-B	BLUE	12V, LED
PL-612-A	AMBER	12V, LED
PT NO	LENS COLOR	BULB

Tolerances: Unless otherwise specifically noted, the following are default tolerances:
 • 3-place Decimal Dimensions $\pm .007$
 • 3-place Decimal Dimensions $\pm .008$
 • Angular Dimensions ± 1.0 Deg.
 • Metric: Refer to equivalent English Dimension Tolerance
 >>> NOTE: All tolerances are Non-Cumulative. <<<

Dimensional Note: All dimensions are expressed in inches except those shown in brackets (xxx) are expressed in millimeters.

"BFC" or an Asterisk (*) = Non-Toleranced Reference Dimension, shown for identification purposes only.

PROPRIETARY INFORMATION: This Engineering Drawing, and the information contained herein, is proprietary to Cole Horse Company and may not be disclosed, re-produced, or in any other way transferred or communicated to any other party without the express written consent of an authorized representative of Cole Horse Company.

DESIGN CONTROL: It is the responsibility of the individual using / referencing this drawing to assure that the noted design revision level agrees with the revision level of the Controlled Document (Master Drawing). This is a NON-CONTROLLED DOCUMENT unless otherwise specifically noted.

DO NOT SCALE - Dimensional variation may occur during printing / reproduction.

Special Characteristics:

- ⊠ Critical Characteristics, relating to Safety and/or Regulatory Compliance
- X Significant Characteristics relating to Process Control (SPC)
- ⊙ Key Characteristics relating to Form - Fit - Function as defined by Cole Horse Company and/or the Customer

(Note that the identification of any Characteristics as being "Special" does not alter the requirement that ALL specified dimensions & tolerances must be met.)

Cole Horse Co.



20 Old Colony Ave., South Boston, MA, 02127
 Phs 617-288-2100 Web: www.colehorse.com

Description:

PILOT LIGHT, L.E.D

Drawing / Part No.:

PL-612, CHART

Current Rev.

A

Used On or Ref:	Scale: 2:1	Drawn By: GA	Date Drawn: 04/14/04	Responsible Engineer: GA	Pg. 1 of 1
-----------------	-------------------	---------------------	-----------------------------	---------------------------------	------------