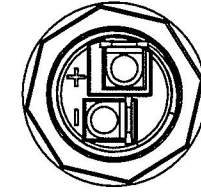
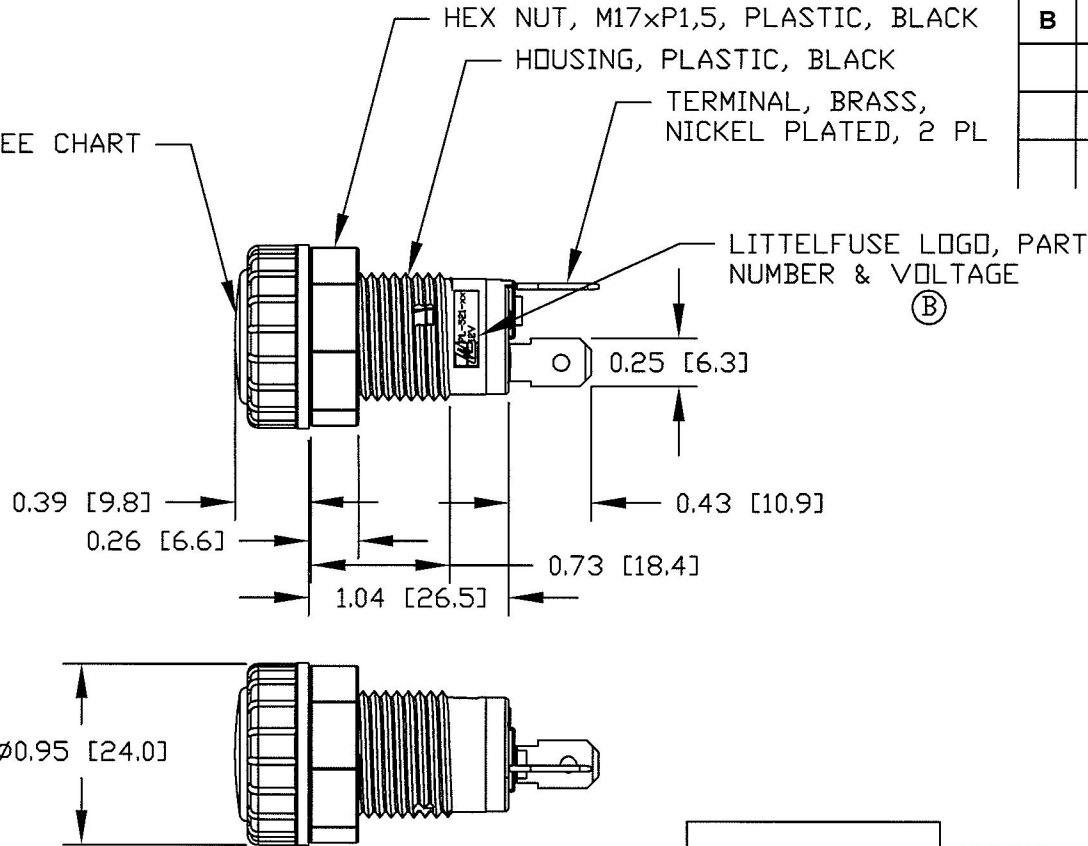


MDUNTING HOLE

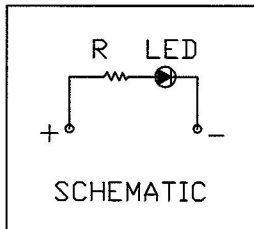
LENS & LED, SEE CHART



**Revision Control Record**

Rev.	Description of Change	ECN No.	Date
A	RELEASED DRAWING	11390	10/28/11
B	ADDED LABEL	12060	2/15/12

PL-521-RC	RED
PL-521-GC	GREEN
PL-521-AC	AMBER
PT NO	LENS & LED COLOR



- NOTES:
1. POLARITY SENSITIVE
  2. RATING: 12Vdc
  3. ILLUMINATION: 500 LUX

**Tolerances** Unless otherwise specifically noted, the following are default tolerances:

**2-places** +/- 0.02"  
**3-places** +/- 0.005"  
**Angular** +/- 1'

Metric: Shown in [ ] refers to equivalent English Dim Tol

"REF." or an Asterisk (\*) = Non-Toleranced Reference Dimension, shown for clarification purposes only.

NOTE: All tolerances are Non-Cumulative.

**PROPRIETARY INFORMATION**  
 This Engineering Drawing, and the information contained herein, is proprietary to Cole Hersee Company and may not be disclosed, re-produced, or in any other way transferred or communicated to any other party without the express written consent of an authorized representative of Cole Hersee Company.

- Special Characteristics:**
- Critical Characteristic, relating to Safety and/or Regulatory Compliance
  - Significant Characteristic relating to Process Control
  - Control Dimension relating to Form - Fit - Function as defined by Cole Hersee Company and/or the Customer

**Cole Hersee Co.**  
 20 Old Colony Ave., South Boston, MA, 02127  
 Phn: 617-268-2100 Web: www.colehersee.com

**PILOT LIGHT**

<b>Description:</b>	
<b>Drawing / Part No.:</b>	<b>PL-521</b>
<b>Current Rev.:</b>	<b>B</b>