

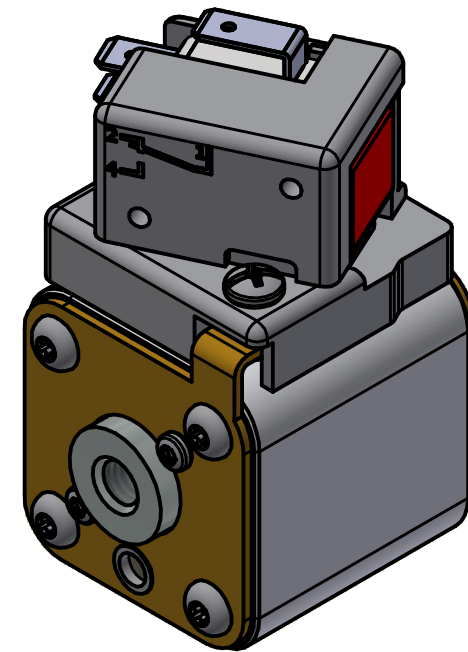
**MOUNTING SPECS:**

STUD SIZE: M8x1.25 - 6H  $\nabla$  6.0[0.24]

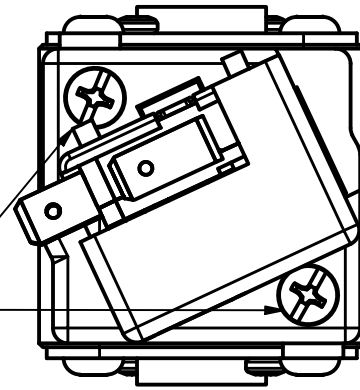
STUD TORQUE: 13-20Nm

REVISION		
REV	DATE	DESCRIPTION
A	03/16/2017	517373GCP - RELEASED -TV
B	10/19/2017	518344ECP - REVISE MOUNTING SPEC NOTES -TV
C	8/30/18	519782ECP/D - CHG STUD TORQUE MRY
D	5/5/22	525159ECP/C - UPDATE HEIGHT, ADD TOLERANCES MRY
E	5/19/22	525232ECP/D - UPDATE LENGTH DIMENSION MRY
F	7/14/22	525433ECP/D - CHANGE HEIGHT DIMENSION FORMAT MRY
G	1/9/23	526835ECP/G - ADDED VIEW WITHOUT MICRO-SWITCH JTM

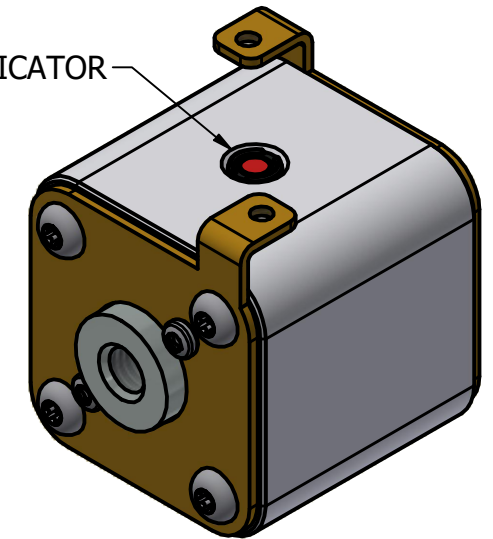
FUSE WITH MICRO-SWITCH



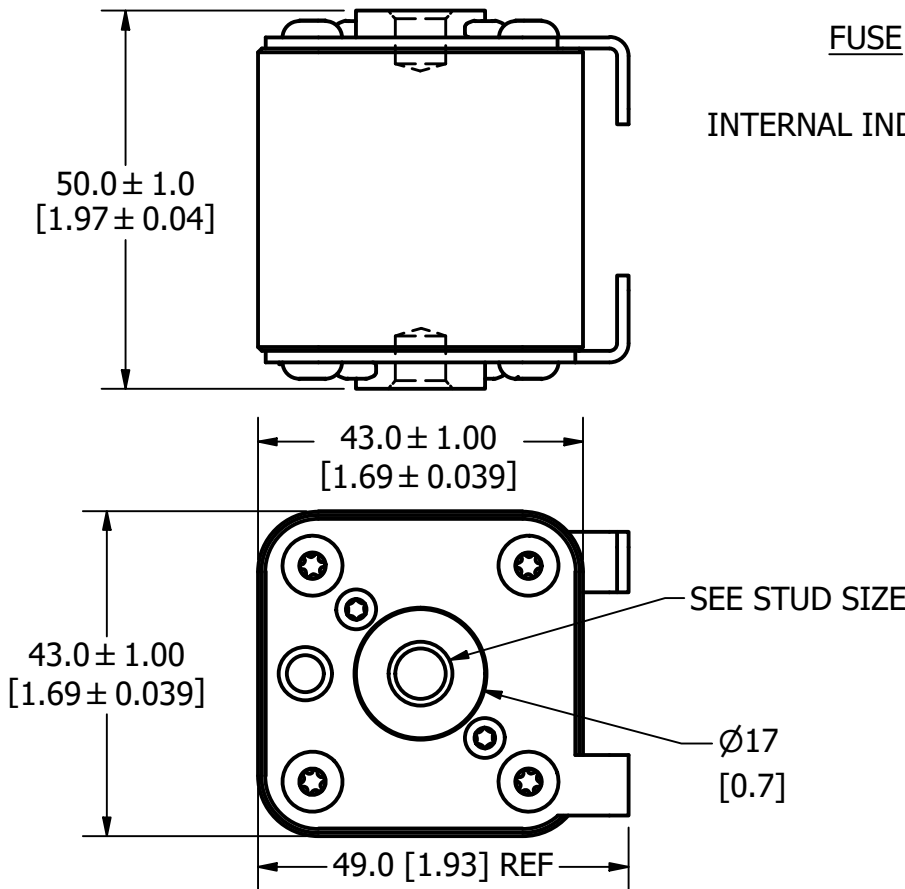
M4x0.7 THREAD  
10.00[.394]  
STUD LENGTH



FUSE

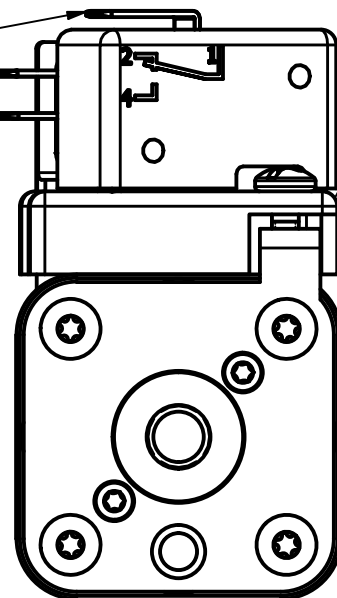


INTERNAL INDICATOR

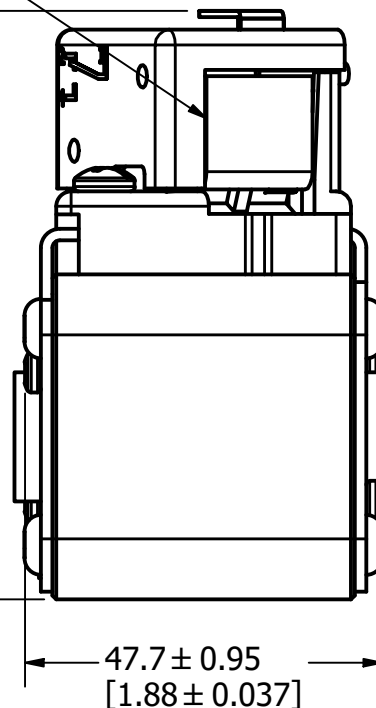


VISUAL INDICATOR

1/4" Q.C.  
TERMINAL



77.9 ± 1.50  
[3.07 ± 0.059]



FUSE WITH MICRO-SWITCH

●	DENOTES CRITICAL CHARACTERISTICS.
CPK	DENOTES CPK DIMENSIONS, -MINIMUM CPK VALUE
ST	DENOTES A CHARACTERISTIC THAT PROVIDES AN INDICATION OF PROCESS PERFORMANCE. PROCEDURE FOR MEASUREMENT AND TRACKING TO BE DEFINED IN LITTELFUSE INSPECTION INSTRUCTIONS.
CP	DENOTES CP DIMENSIONS, -MINIMUM CP VALUE MUST BE WITHIN THE DIMENSIONAL LIMITATIONS SHOWN ON DRAWING AND INITIALLY LOCATED TO ALLOW FOR MAXIMUM TOOL LIFE.

**B**

MATL SPEC		FINISH	
DRW TVESELSK	DATE 12/31/1969	SCALE NTS	FINISH GOOD WT GRAMS/PIECE

UNLESS OTHERWISE SPECIFIED, DIMENSIONS ARE IN MILLIMETERS, DIMENSIONS IN BRACKETS [ ] ARE INCHES DIMENSIONING AND DO NOT INCLUDE PLATING. TOLERANCING TO BE INTERPRETED IN ACCORDANCE WITH ANSI Y14.5M-1994

3RD ANGLE PROJECTION	
-------------------------	--

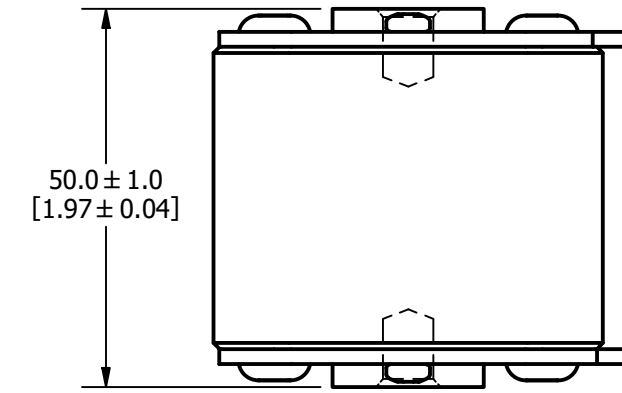
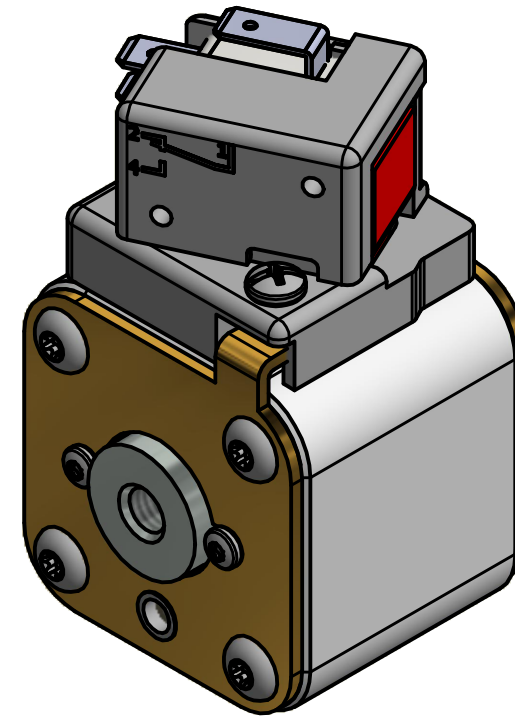
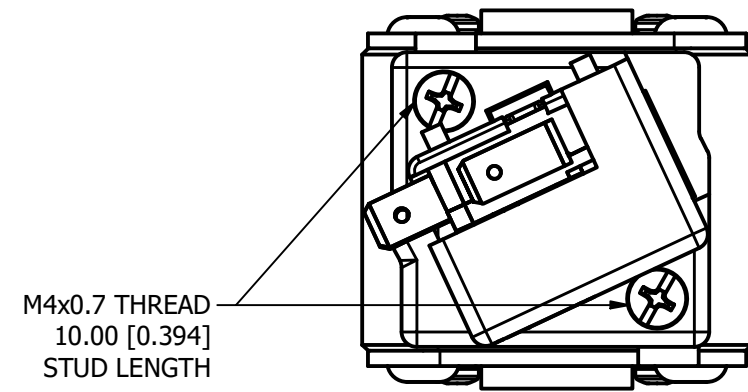
**TITLE** SQUARE BODY 30 CASE SIZE - METRIC THREAD OUTLINE

<b>Littelfuse</b> CHICAGO, ILLINOIS 60631	REVISION <b>G</b>	DRWG NO. <b>OL-PSR030FL0000</b>	SHEET 1 OF 1
--	----------------------	------------------------------------	--------------

MOUNTING SPECS:  
 STUD SIZE: M8x1.25 - 6H  $\nabla$  8.0[0.31]  
 STUD TORQUE: 13-20Nm

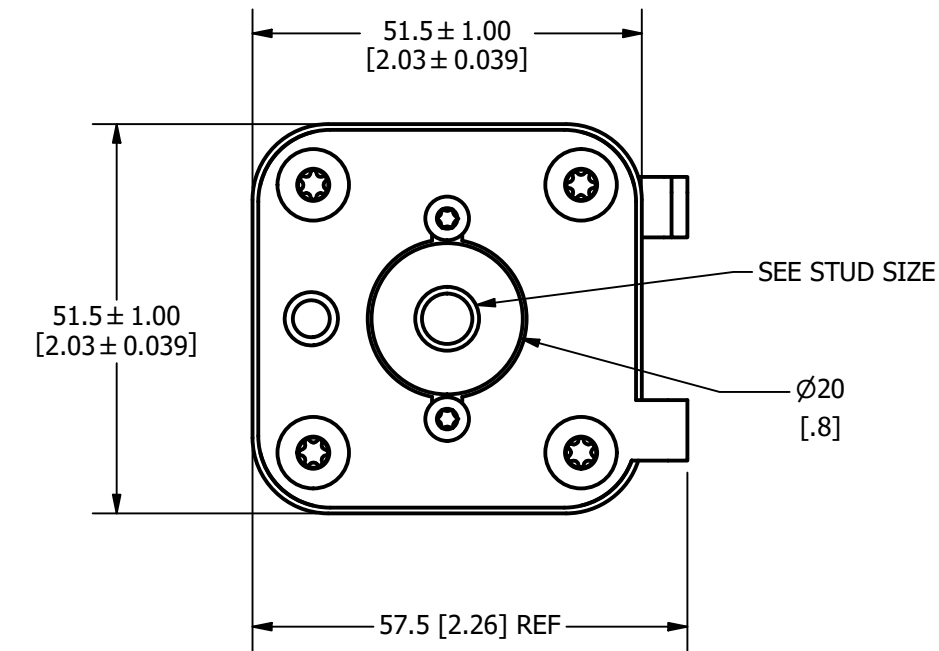
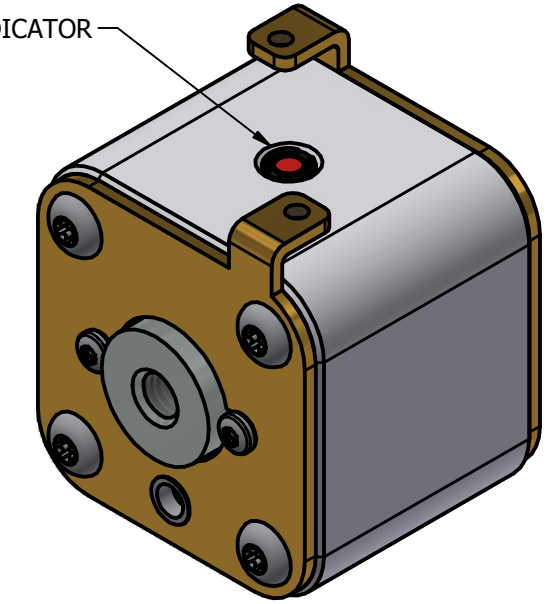
REVISION		
REV	DATE	DESCRIPTION
A	08/11/2017	518016GCP - RELEASED -TV
B	10/19/2017	518344ECP - REVISE MOUNTING SPEC NOTES -TV
C	8/30/18	519782ECP/D - CHG STUD TORQUE MRY
D	5/5/22	525159ECP/D - CHANGE HEIGHT, ADD TOLERANCES MRY
E	5/19/22	525232ECP/D - UPDATE LENGTH DIMENSION MRY
F	7/14/22	525433ECP/D - CHANGE HEIGHT DIMENSION FORMAT MRY
G	1/12/24	526835ECP/D - ADDED VIEW WITHOUT MICRO-SWITCH JTM

FUSE WITH MICRO-SWITCH

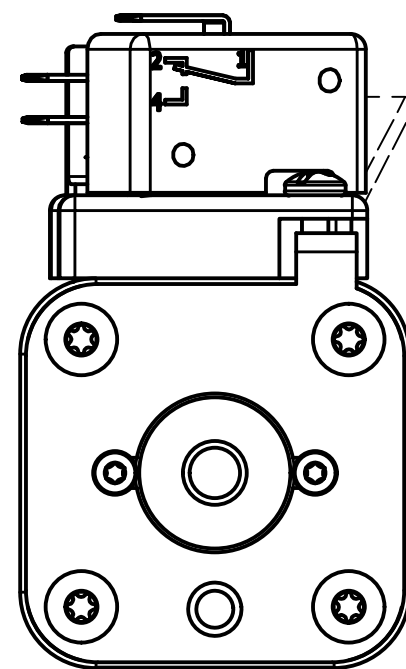


FUSE

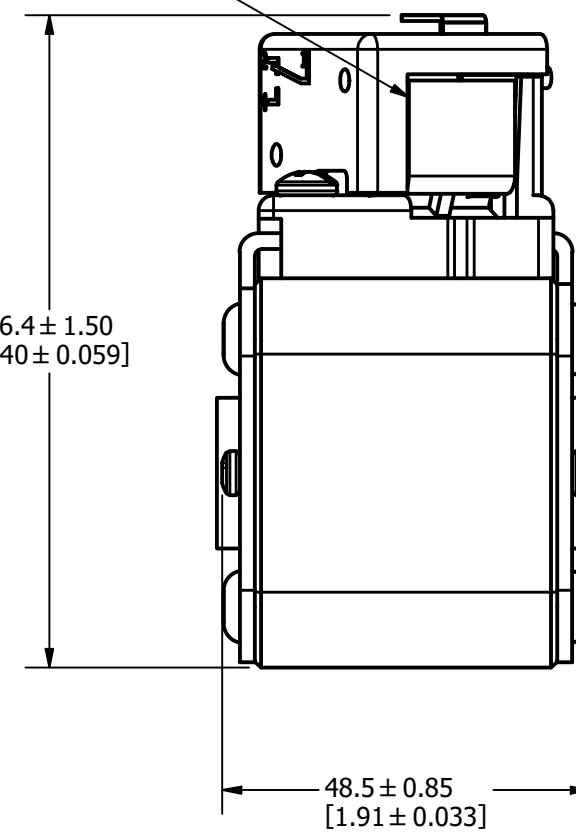
INTERNAL INDICATOR



VISUAL INDICATOR



86.4 ± 1.50  
[3.40 ± 0.059]

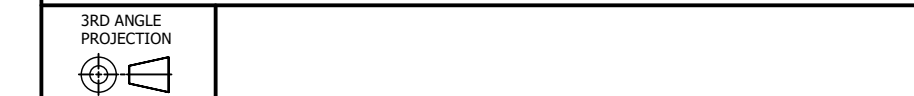


FUSE WITH MICRO-SWITCH

●	DENOTES CRITICAL CHARACTERISTICS.
CPK	DENOTES CPK DIMENSIONS, -MINIMUM CPK VALUE
(ST)	DENOTES A CHARACTERISTIC THAT PROVIDES AN INDICATION OF PROCESS PERFORMANCE. PROCEDURE FOR MEASUREMENT AND TRACKING TO BE DEFINED IN LITTELFUSE INSPECTION INSTRUCTIONS.
CP	DENOTES CP DIMENSIONS, -MINIMUM CP VALUE. MUST BE WITHIN THE DIMENSIONAL LIMITATIONS SHOWN ON DRAWING AND INITIALLY LOCATED TO ALLOW FOR MAXIMUM TOOL LIFE.

MATL SPEC	FINISH		
DRW TVESELSK	DATE 1/12/2024	SCALE NTS	FINISH GOOD WT GRAMS/PIECE

UNLESS OTHERWISE SPECIFIED, DIMENSIONS ARE IN MILLIMETERS, DIMENSIONS IN BRACKETS [ ] ARE INCHES DIMENSIONING AND DO NOT INCLUDE PLATING. TOLERANCING TO BE INTERPRETED IN ACCORDANCE WITH ANSI Y14.5M-1994



TITLE SQUARE BODY 31 CASE SIZE - METRIC THREAD OUTLINE

REVISION		
REV	DATE	DESCRIPTION
A	03/16/2016	517373GCP - RELEASED -TV
B	10/19/2017	518344ECP - REVISE MOUNTING SPEC NOTES -TV
C	8/30/18	519782ECP/D - CHG STUD TORQUE MRY
D	5/5/22	525159ECP/D - CHANGE HEIGHT, ADD TOLERANCES MRY
E	5/19/22	525232ECP/D - UPDATE LENGTH DIMENSION MRY
F	7/14/22	525433ECP/D - CHANGE HEIGHT DIMENSION FORMAT MRY
G	1/12/24	526835ECP/D - ADDED VIEW WITHOUT MICRO-SWITCH JTM

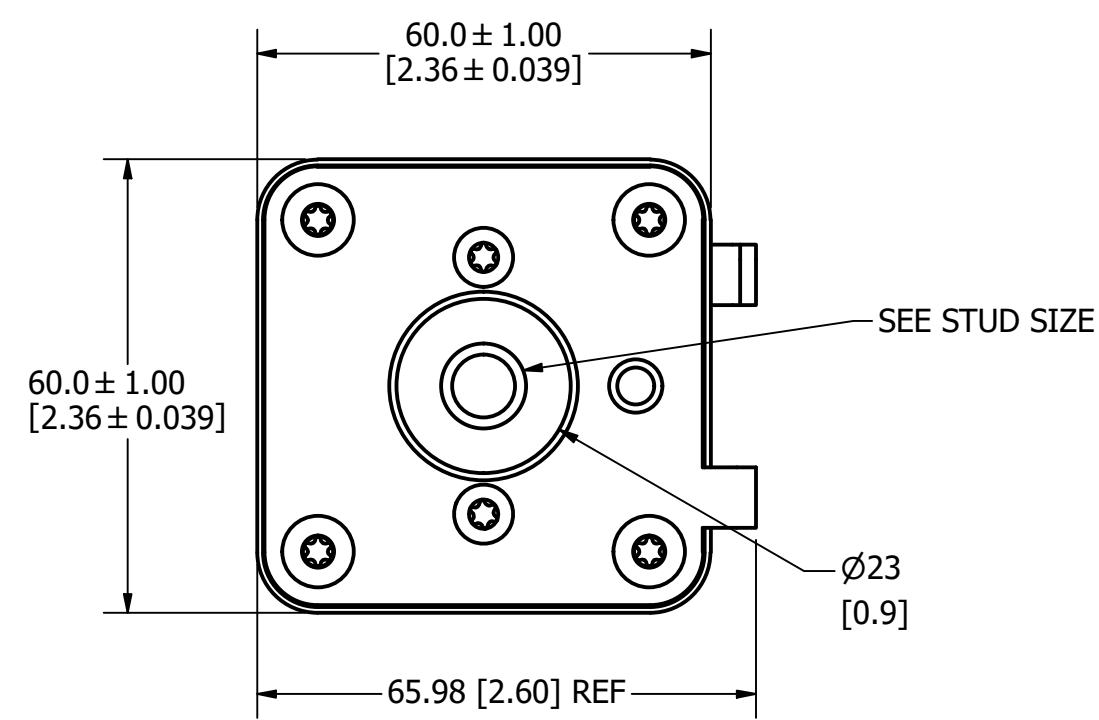
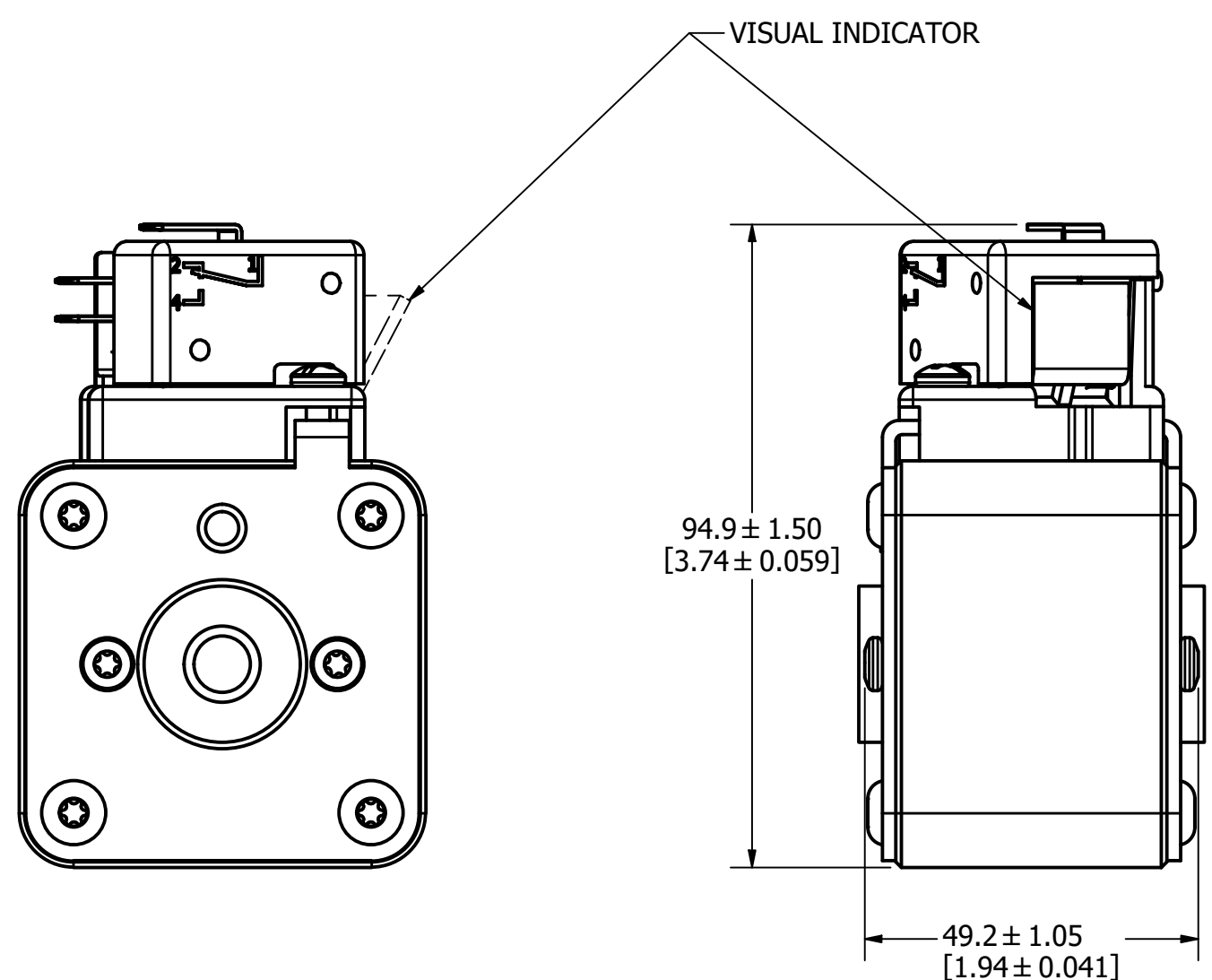
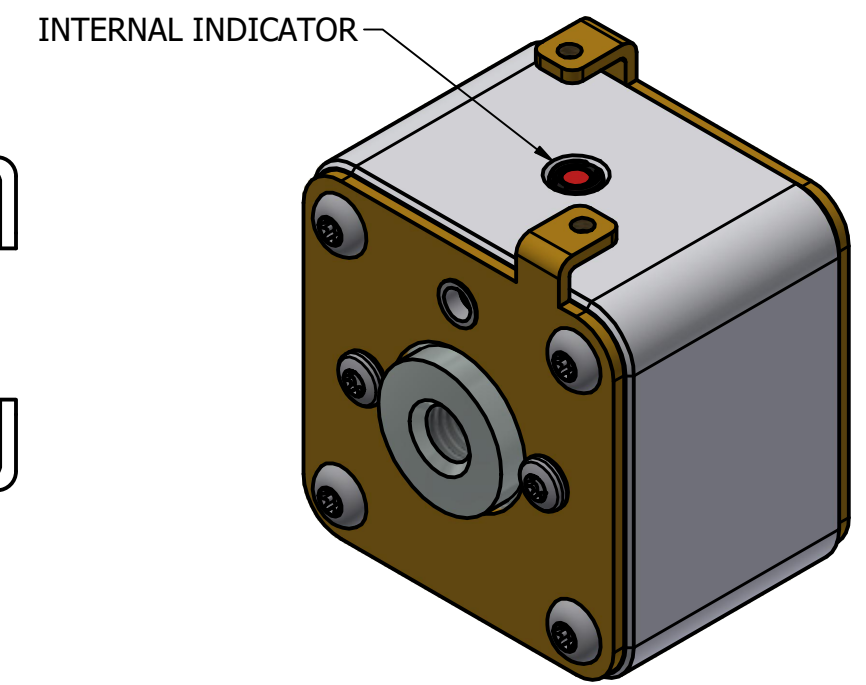
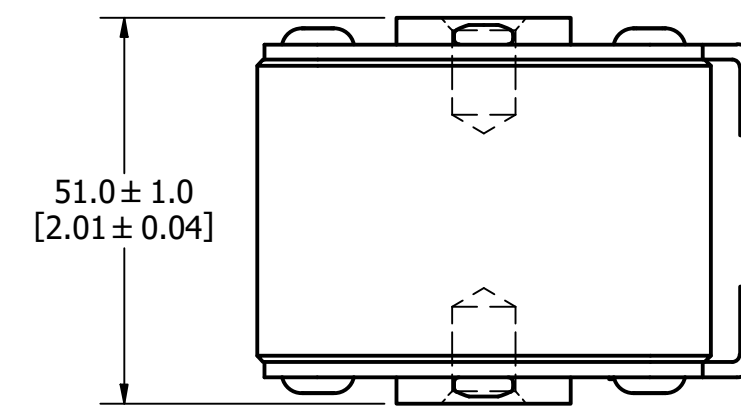
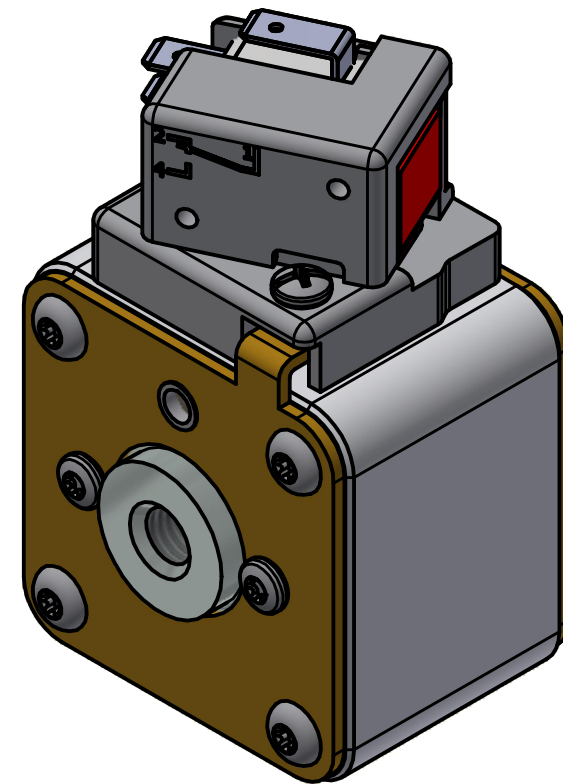
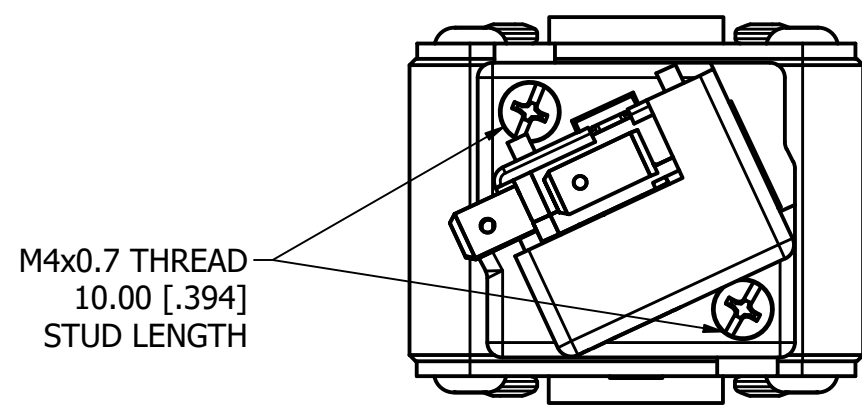
**MOUNTING SPECS:**

STUD SIZE: M10x1.5 - 6H  $\nabla$ 11.5 [0.45]

STUD TORQUE: 26-35Nm

FUSE WITH MICRO-SWITCH

FUSE



FUSE WITH MICRO-SWITCH

●	DENOTES CRITICAL CHARACTERISTICS.		
CPK	DENOTES CPK DIMENSIONS, -MINIMUM CPK VALUE		
(ST)	DENOTES A CHARACTERISTIC THAT PROVIDES AN INDICATION OF PROCESS PERFORMANCE. PROCEDURE FOR MEASUREMENT AND TRACKING TO BE DEFINED IN LITTELFUSE INSPECTION INSTRUCTIONS.		
CP	DENOTES CP DIMENSIONS, -MINIMUM CP VALUE MUST BE WITHIN THE DIMENSIONAL LIMITATIONS SHOWN ON DRAWING AND INITIALLY LOCATED TO ALLOW FOR MAXIMUM TOOL LIFE.		
MATL SPEC	FINISH		
DRW TVESELSK	DATE 1/12/2024	SCALE NTS	FINISH GOOD WT GRAMS/PIECE
UNLESS OTHERWISE SPECIFIED, DIMENSIONS ARE IN MILLIMETERS, DIMENSIONS IN BRACKETS [ ] ARE INCHES DIMENSIONING AND DO NOT INCLUDE PLATING. TOLERANCING TO BE INTERPRETED IN ACCORDANCE WITH ANSI Y14.5M-1994			
3RD ANGLE PROJECTION			
TITLE SQUARE BODY 32 CASE SIZE - METRIC THREAD OUTLINE			
		REVISION G	DRWG NO. OL-PSR032FL0000
CHICAGO, ILLINOIS 60631		SHEET 1 OF 1	

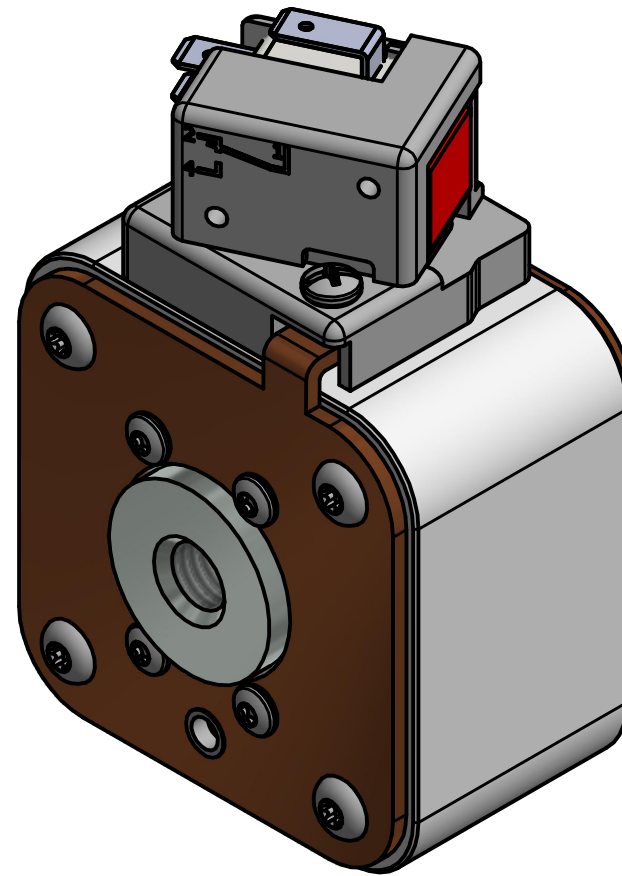
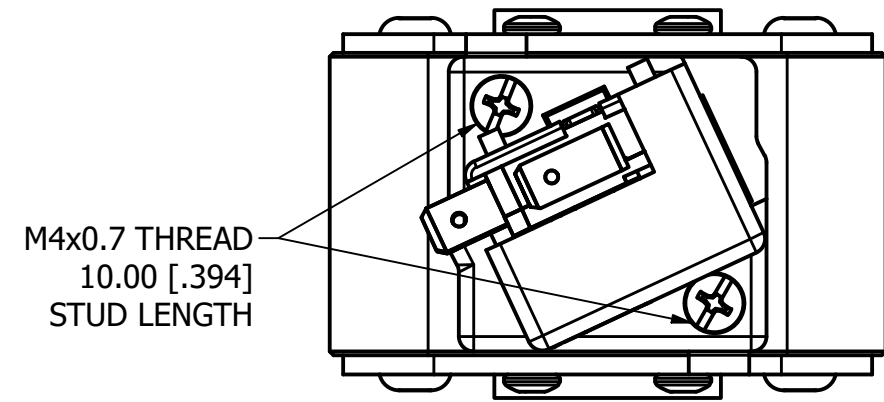
MOUNTING SPECS:

STUD SIZE: M12x1.75-6H  $\nabla$  13.0[0.51]

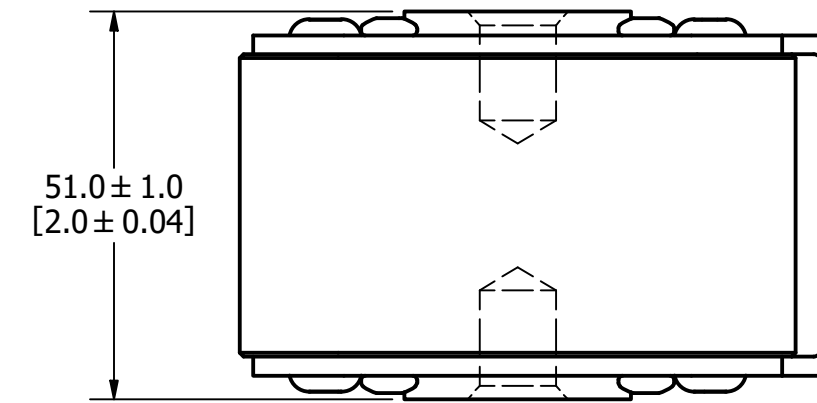
STUD TORQUE: 45-55Nm

REVISION		
REV	DATE	DESCRIPTION
A	03/16/2016	517373GCP - RELEASED -TV
B	10/19/2017	518344ECP - REVISE STUD SIZE NOTES -TV
C	8/30/18	519782ECP/D - CHG STUD TORQUE MRY
D	5/5/22	525159ECP/D - CHANGE HEIGHT, ADD TOLERANCES MRY
E	5/19/22	525232ECP/D - UPDATE LENGTH DIMENSION MRY
F	7/14/22	525433ECP/D - CHANGE HEIGHT DIMENSION FORMAT MRY
G	1/17/24	526835ECP/D - ADDED VIEW WITHOUT MICRO-SWITCH JTM

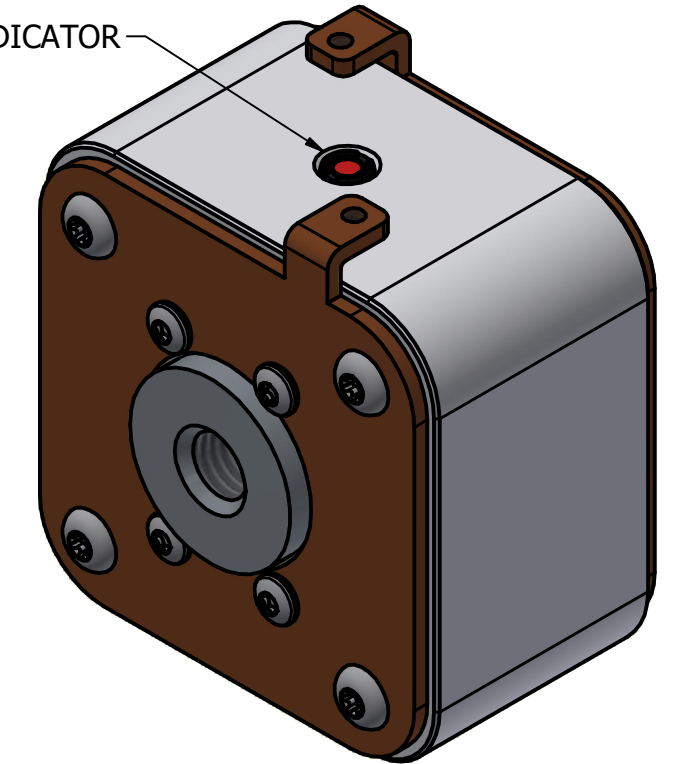
FUSE WITH MICRO-SWITCH



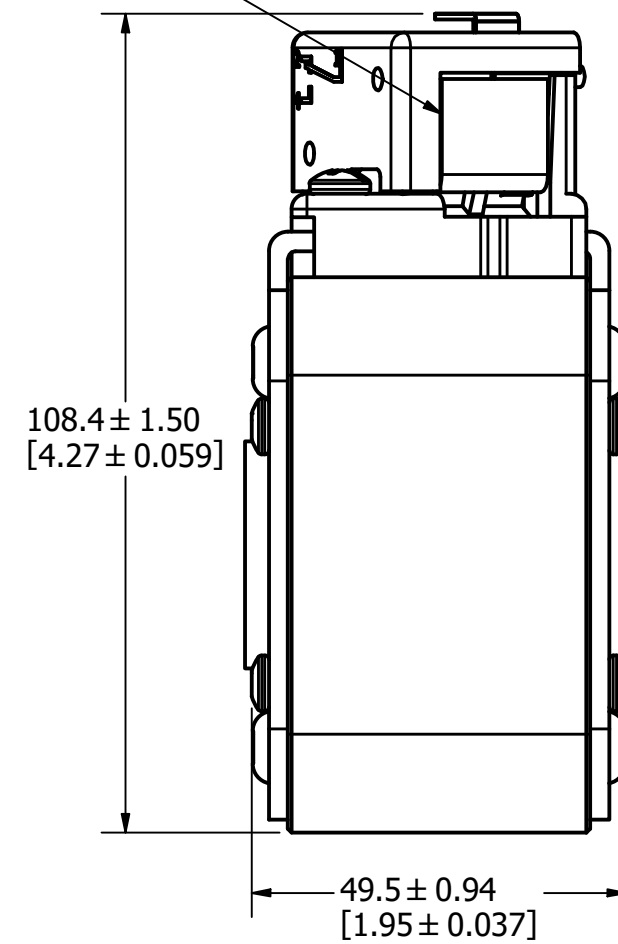
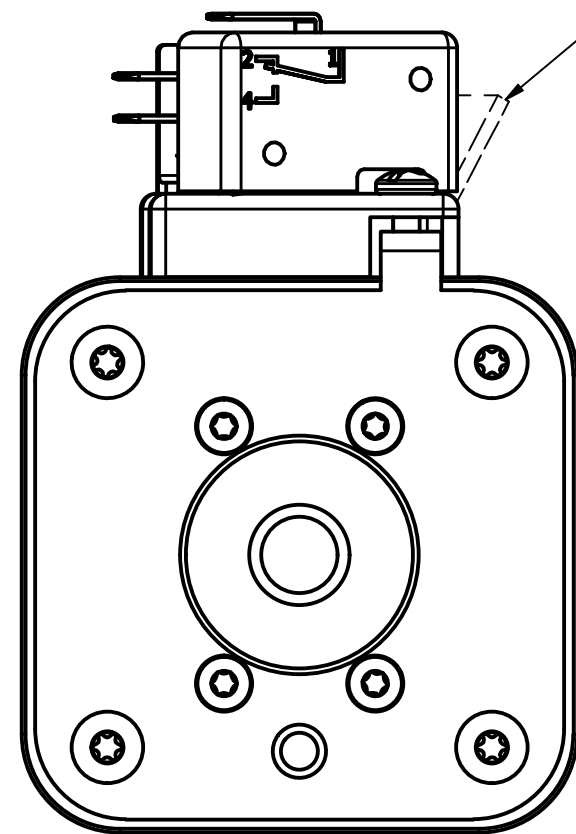
FUSE



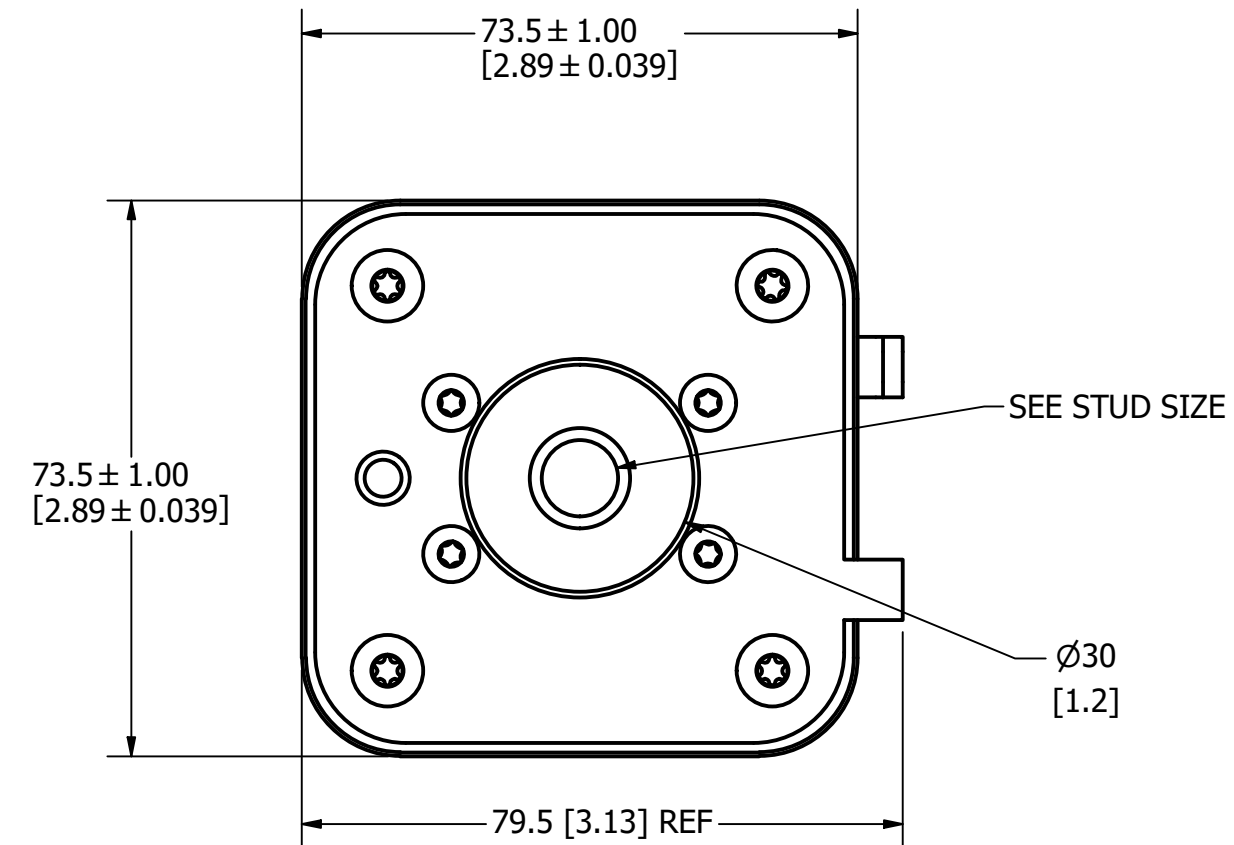
INTERNAL INDICATOR



VISUAL INDICATOR



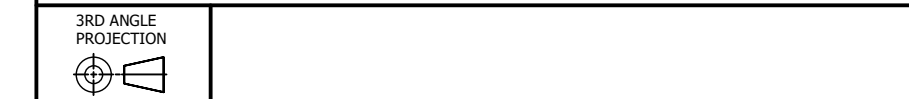
FUSE WITH MICRO-SWITCH



●	DENOTES CRITICAL CHARACTERISTICS.
CPK	DENOTES CPK DIMENSIONS, -MINIMUM CPK VALUE
(ST)	DENOTES A CHARACTERISTIC THAT PROVIDES AN INDICATION OF PROCESS PERFORMANCE. PROCEDURE FOR MEASUREMENT AND TRACKING TO BE DEFINED IN LITTELFUSE INSPECTION INSTRUCTIONS.
CP	DENOTES CP DIMENSIONS, -MINIMUM CP VALUE MUST BE WITHIN THE DIMENSIONAL LIMITATIONS SHOWN ON DRAWING AND INITIALLY LOCATED TO ALLOW FOR MAXIMUM TOOL LIFE.

MATL SPEC	FINISH		
DRW TVESELSK	DATE 1/17/2024	SCALE NTS	FINISH GOOD WT GRAMS/PIECE

UNLESS OTHERWISE SPECIFIED, DIMENSIONS ARE IN MILLIMETERS, DIMENSIONS IN BRACKETS [ ] ARE INCHES DIMENSIONING AND DO NOT INCLUDE PLATING. TOLERANCING TO BE INTERPRETED IN ACCORDANCE WITH ANSI Y14.5M-1994



TITLE SQUARE BODY 33 CASE SIZE - METRIC THREAD OUTLINE

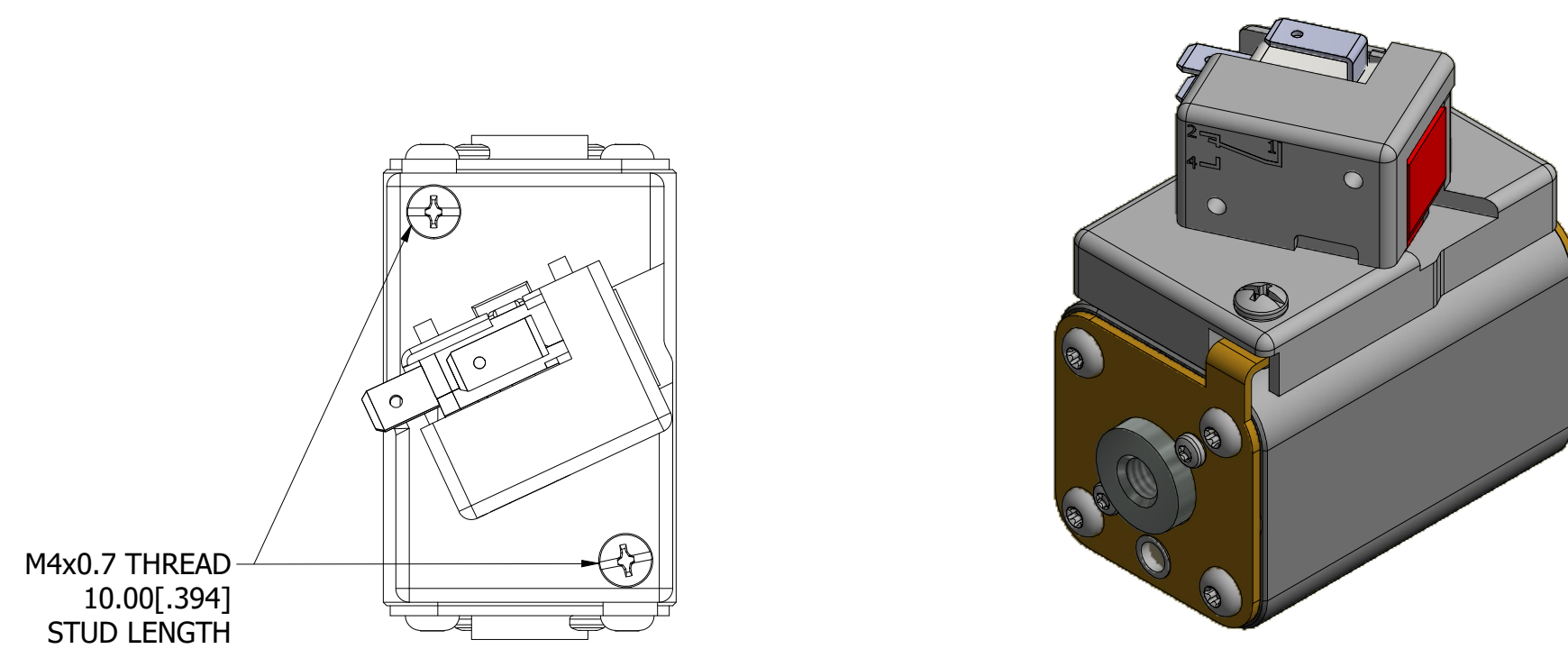
REVISION		
REV	DATE	DESCRIPTION
A	01/10/2019	518685GCP - RELEASED -TV
B	8/30/18	519782ECP/D - CHG STUD TORQUE MRY
C	5/5/22	525161ECP/D - CHANGE HEIGHT, ADD TOLERANCES MRY
D	5/19/22	525232ECP/D - UPDATE LENGTH DIMENSION MRY
E	7/14/22	525433ECP/D - CHANGE HEIGHT DIMENSION FORMAT MRY
F	10/24/23	526836ECP/D - ADD VIEW W/O MICROSWITCH MRY

**MOUNTING SPECS**

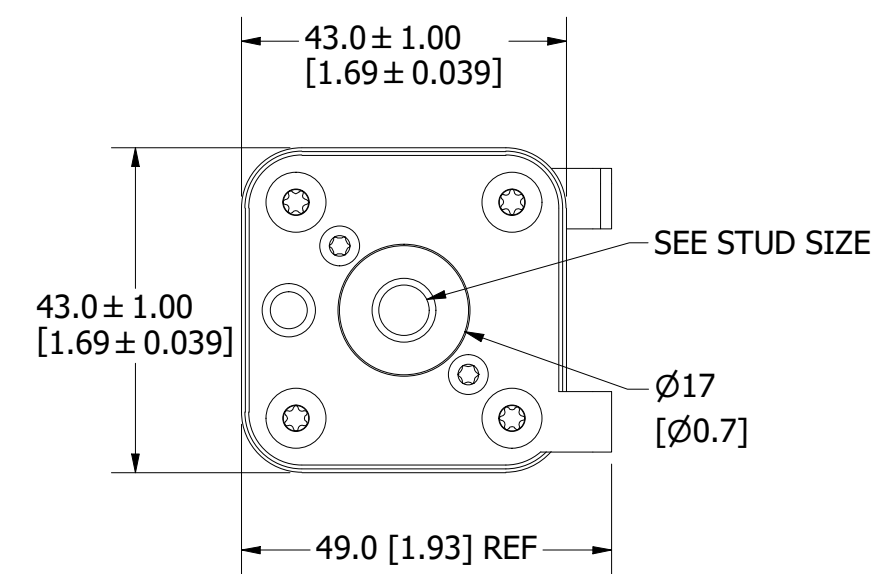
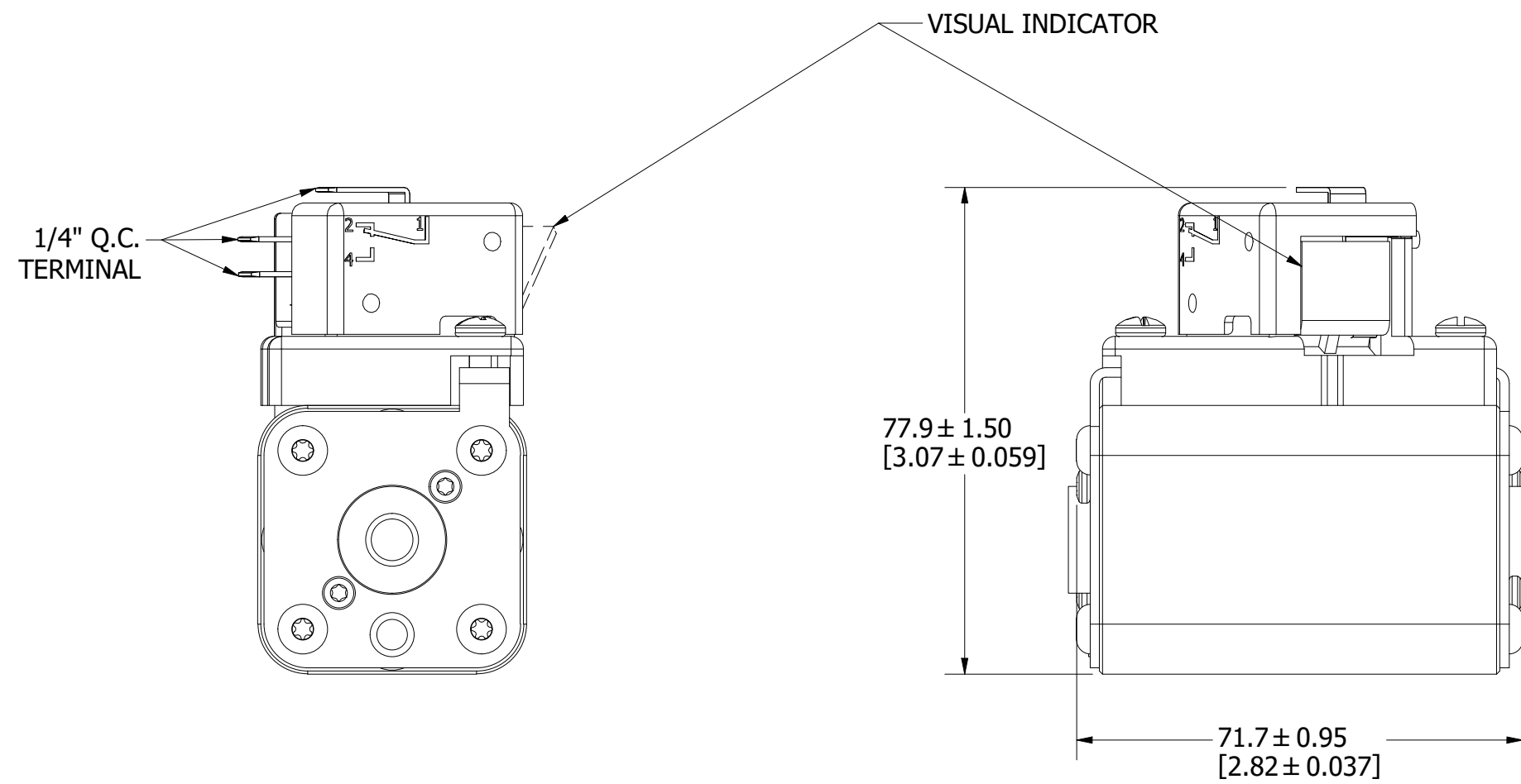
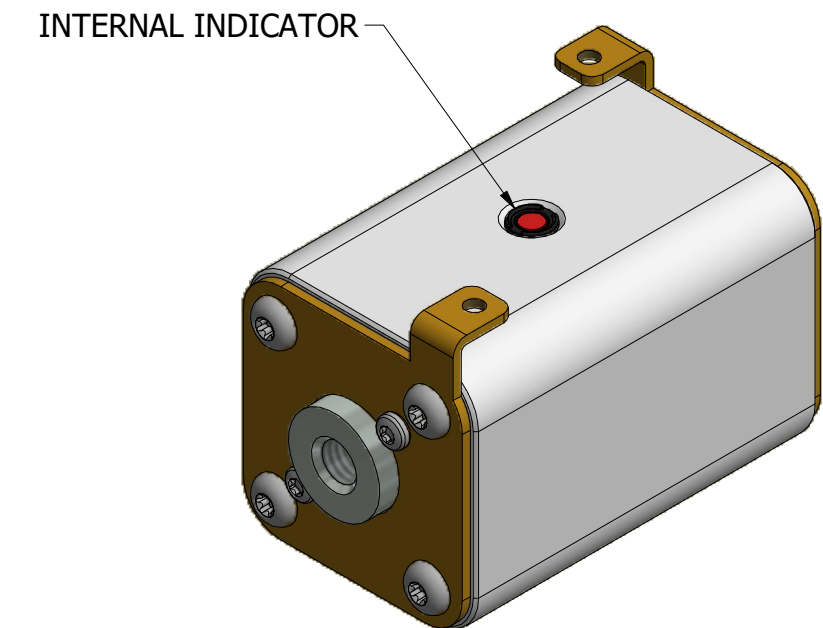
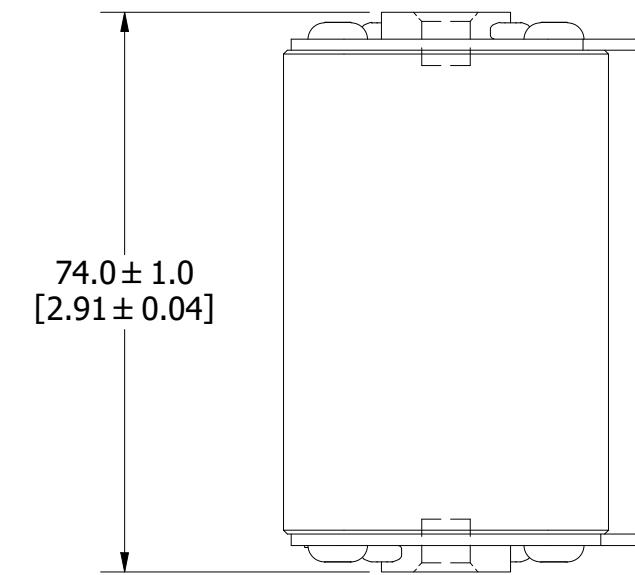
STUD SIZE: M8x1.25-6H  $\nabla$  6.0 [0.24]

STUD TORQUE: 13-20Nm

**FUSE WITH MICROSWITCH**



**FUSE**



**FUSE WITH MICROSWITCH**

●	DENOTES CRITICAL CHARACTERISTICS.
CPK	DENOTES CPK DIMENSIONS, -MINIMUM CPK VALUE
(ST)	DENOTES A CHARACTERISTIC THAT PROVIDES AN INDICATION OF PROCESS PERFORMANCE. PROCEDURE FOR MEASUREMENT AND TRACKING TO BE DEFINED IN LITTELFUSE INSPECTION INSTRUCTIONS.
CP	DENOTES CP DIMENSIONS, -MINIMUM CP VALUE MUST BE WITHIN THE DIMENSIONAL LIMITATIONS SHOWN ON DRAWING AND INITIALLY LOCATED TO ALLOW FOR MAXIMUM TOOL LIFE.

MATL SPEC	FINISH		
DRW TVESELSK	DATE 11/6/2013	SCALE NTS	FINISH GOOD WT GRAMS/PIECE

UNLESS OTHERWISE SPECIFIED, DIMENSIONS ARE IN MILLIMETERS, DIMENSIONS IN BRACKETS [ ] ARE INCHES DIMENSIONING AND DO NOT INCLUDE PLATING. TOLERANCING TO BE INTERPRETED IN ACCORDANCE WITH ANSI Y14.5M-1994



**TITLE** SQUARE BODY 70 CASE SIZE - METRIC THREAD OUTLINE

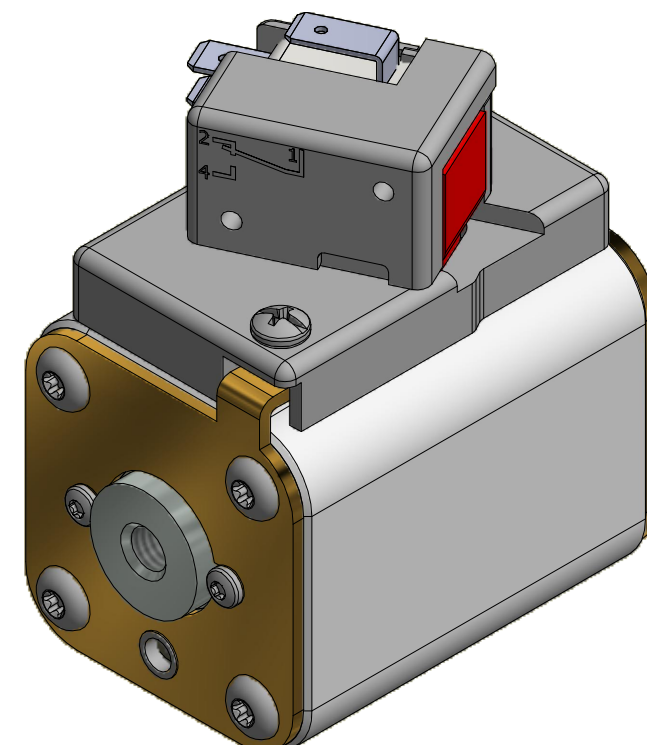
MOUNTING SPECS

STUD SIZE: M8x1.25 - 6H  $\nabla$  8.0[0.31]

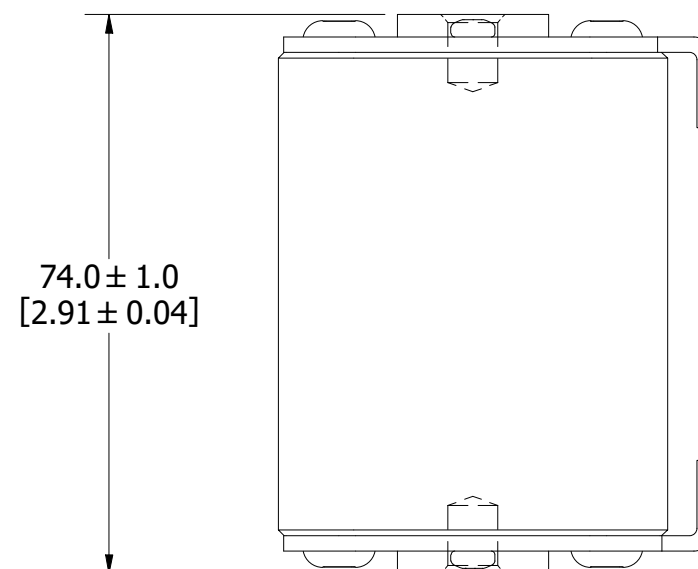
STUD TORQUE: 13-20Nm

REVISION		
REV	DATE	DESCRIPTION
A	03/16/2016	517373GCP - RELEASED -TV
B	10/19/2017	518344ECP - REVISE MOUNTING SPEC NOTES -TV
C	8/30/18	519782ECP/D - CHG STUD TORQUE MRY
D	5/5/22	525161ECP/D - CHANGE HEIGHT, ADD TOLERANCES MRY
E	5/19/22	525232ECP/D - UPDATE LENGTH DIMENSION MRY
F	7/14/22	525433ECP/D - CHANGE HEIGHT DIMENSION FORMAT MRY
G	10/24/23	526836ECP/D - ADD VIEW W/O MICROSWITCH MRY

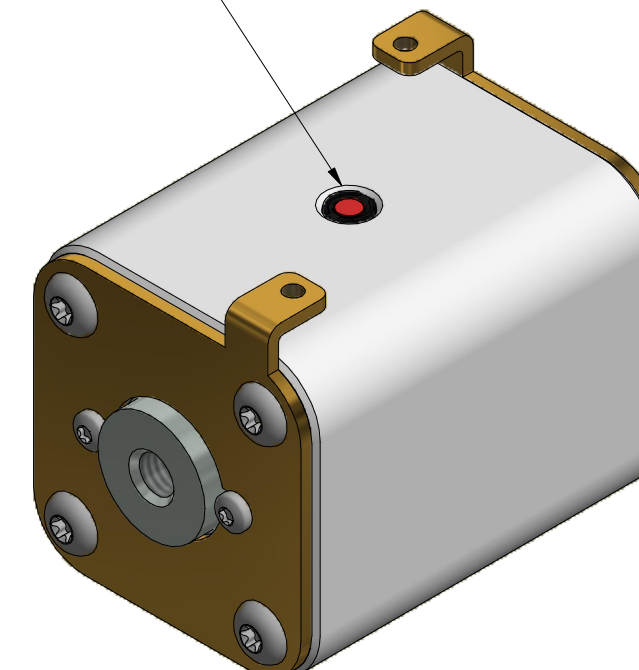
FUSE WITH MICROSWITCH



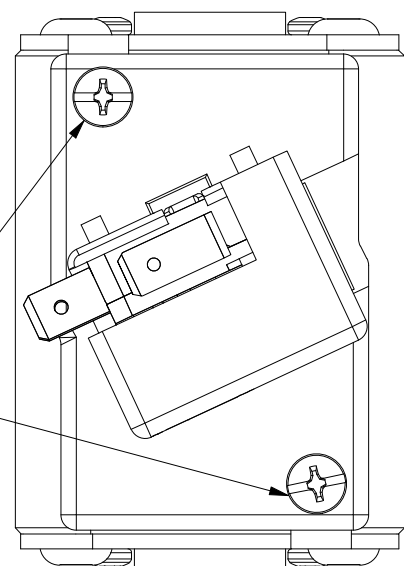
FUSE



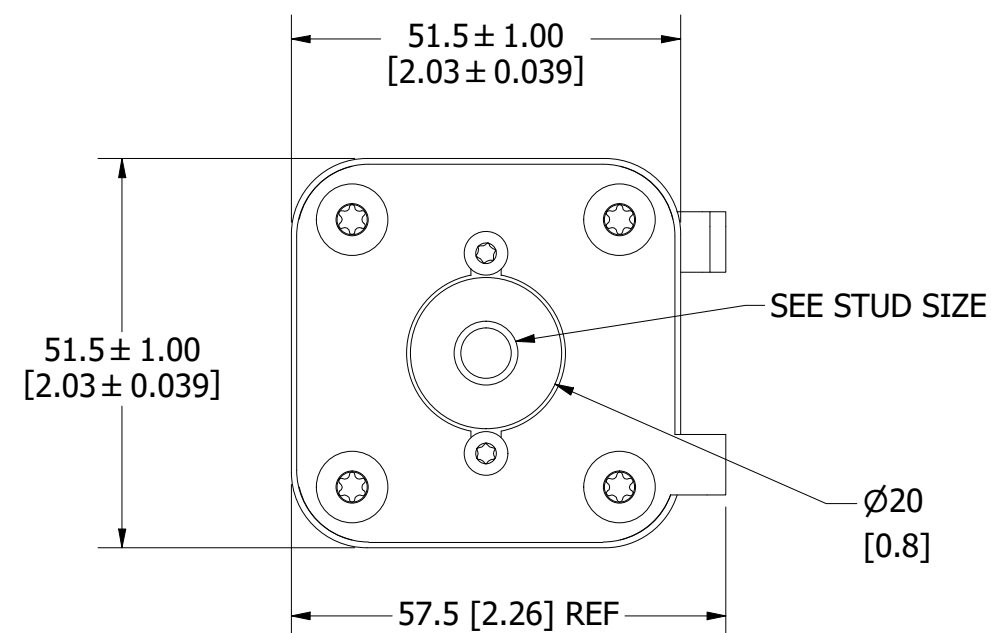
INTERNAL INDICATOR



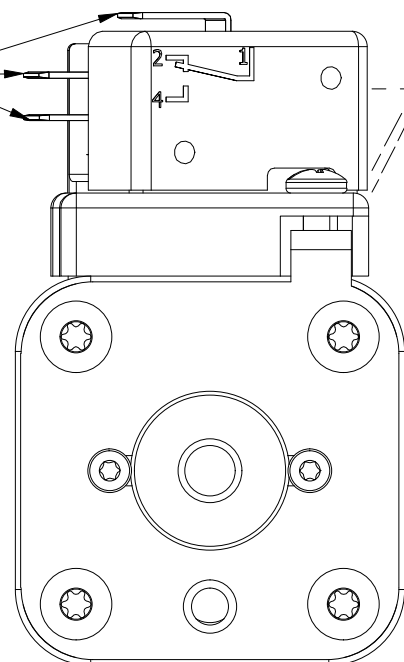
M4x0.7 THREAD  
10.00[.394]  
STUD LENGTH



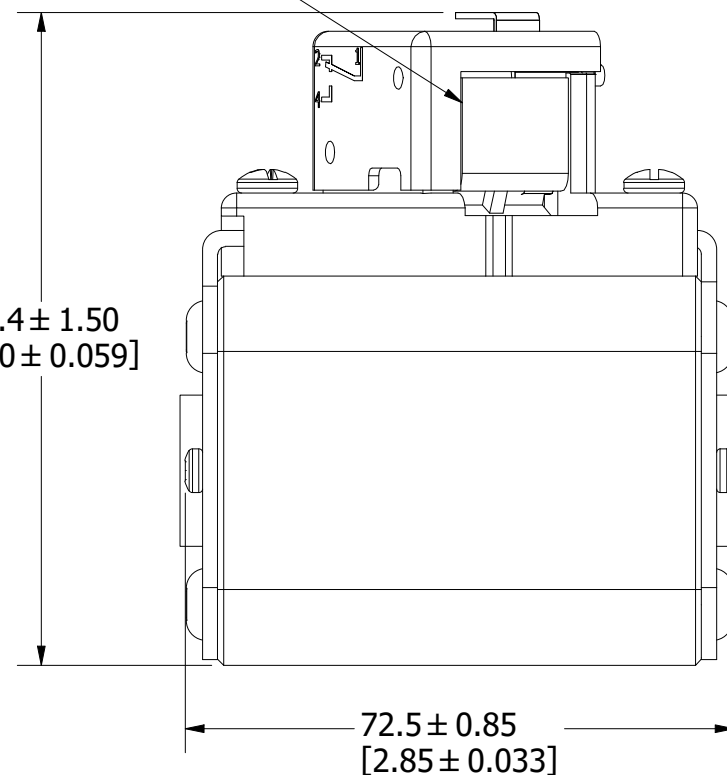
VISUAL INDICATOR



1/4" Q.C.  
TERMINAL



86.4 ± 1.50  
[3.40 ± 0.059]



72.5 ± 0.85  
[2.85 ± 0.033]

FUSE WITH MICROSWITCH

●	DENOTES CRITICAL CHARACTERISTICS.
CPK	DENOTES CPK DIMENSIONS, -MINIMUM CPK VALUE
(ST)	DENOTES A CHARACTERISTIC THAT PROVIDES AN INDICATION OF PROCESS PERFORMANCE. PROCEDURE FOR MEASUREMENT AND TRACKING TO BE DEFINED IN LITTELFUSE INSPECTION INSTRUCTIONS.
CP	DENOTES CP DIMENSIONS, -MINIMUM CP VALUE MUST BE WITHIN THE DIMENSIONAL LIMITATIONS SHOWN ON DRAWING AND INITIALLY LOCATED TO ALLOW FOR MAXIMUM TOOL LIFE.

MATL SPEC	FINISH

DRW	DATE	SCALE	FINISH GOOD WT
TVESELSK	11/6/2013	NTS	GRAMS/PIECE

UNLESS OTHERWISE SPECIFIED, DIMENSIONS ARE IN MILLIMETERS, DIMENSIONS IN BRACKETS [ ] ARE INCHES DIMENSIONING AND DO NOT INCLUDE PLATING. TOLERANCING TO BE INTERPRETED IN ACCORDANCE WITH ANSI Y14.5M-1994



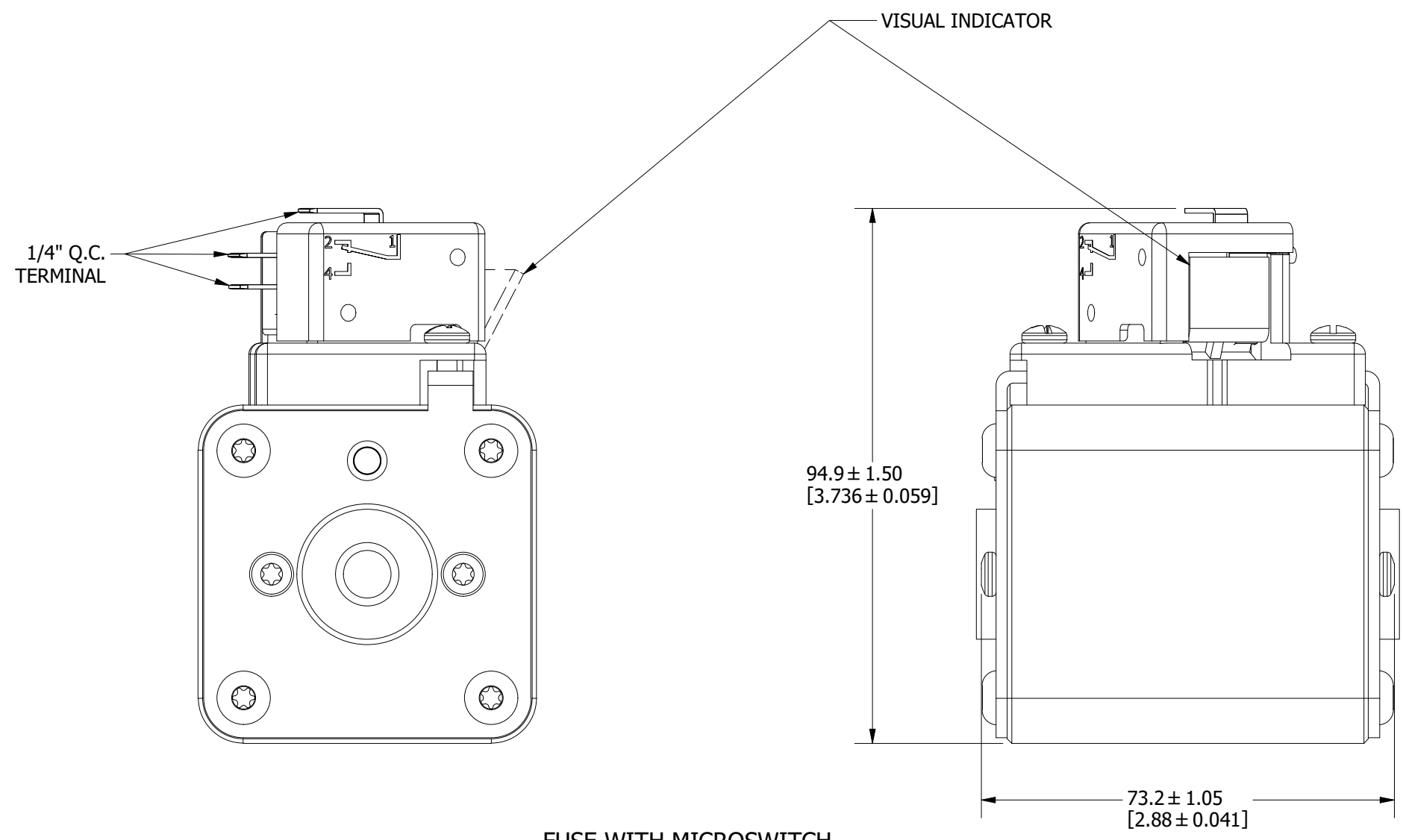
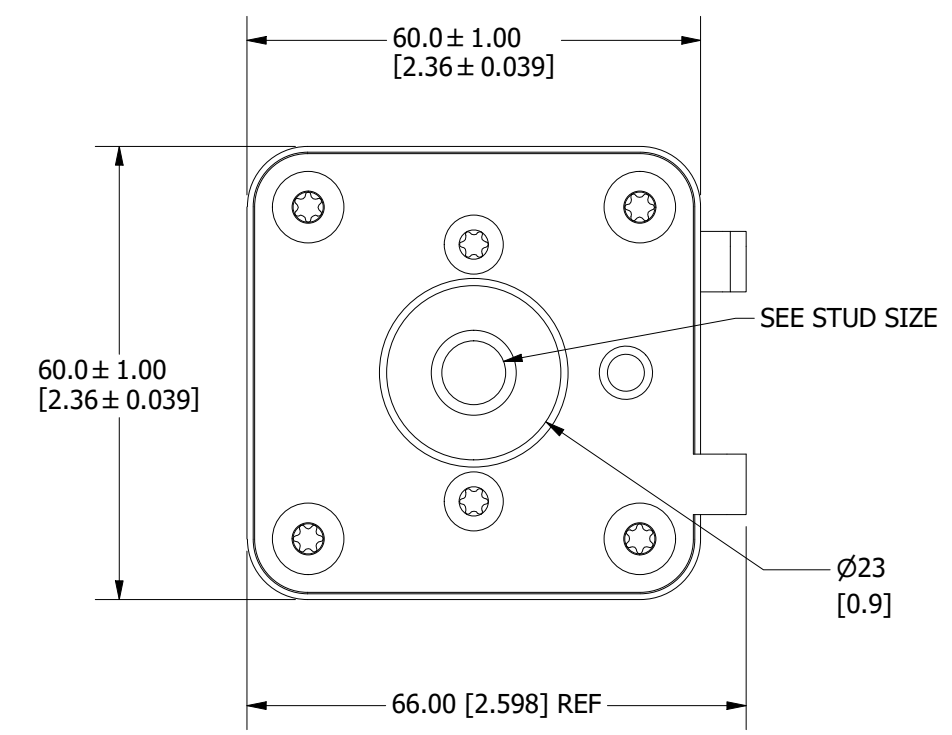
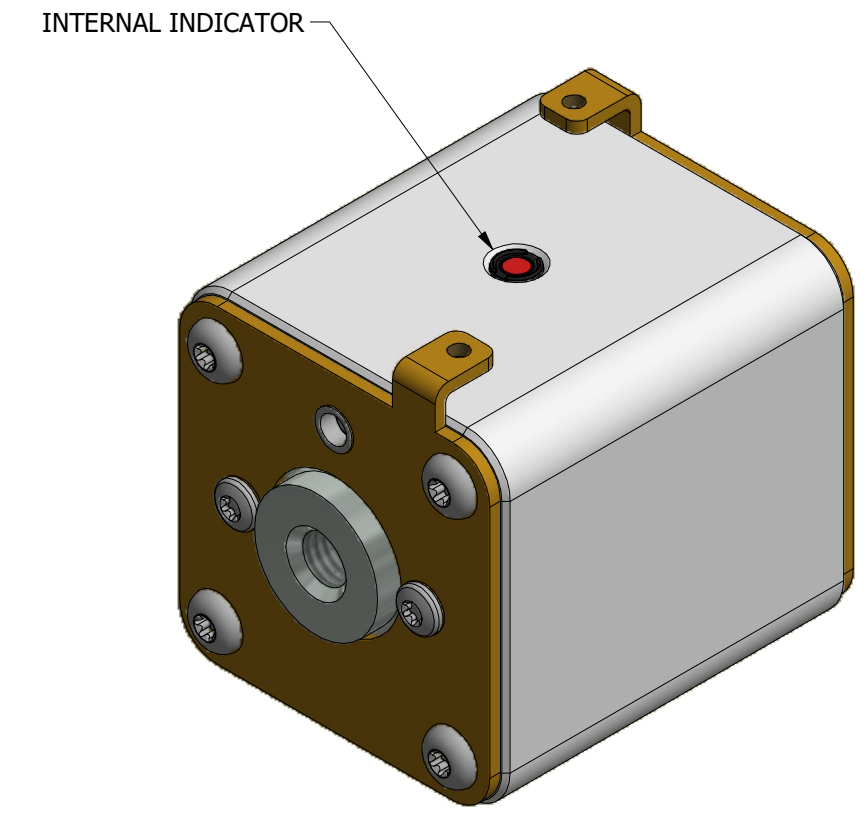
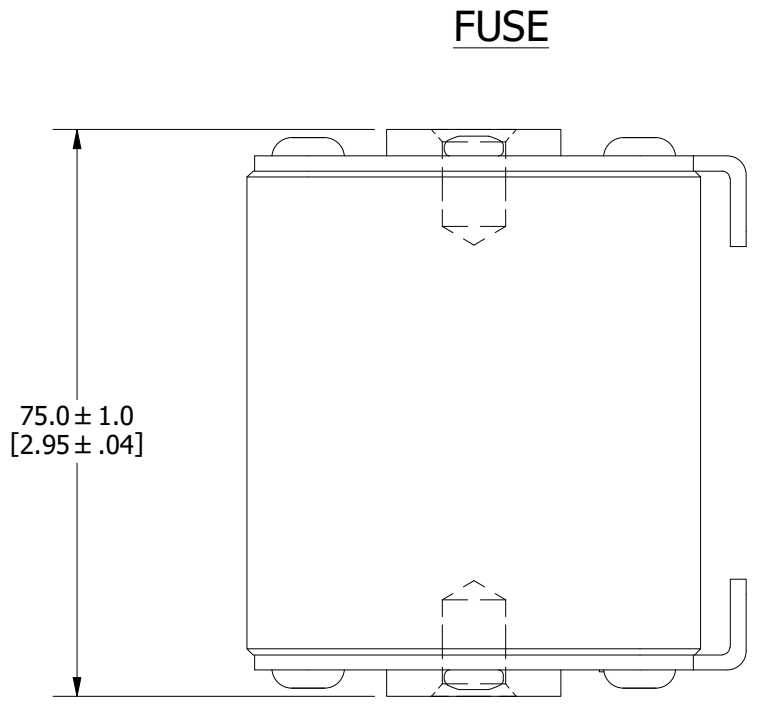
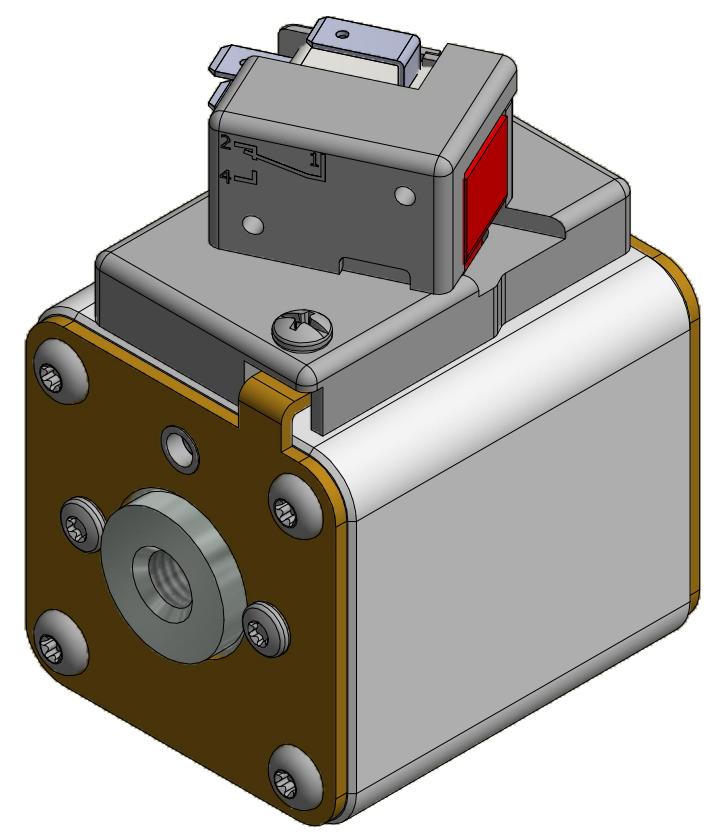
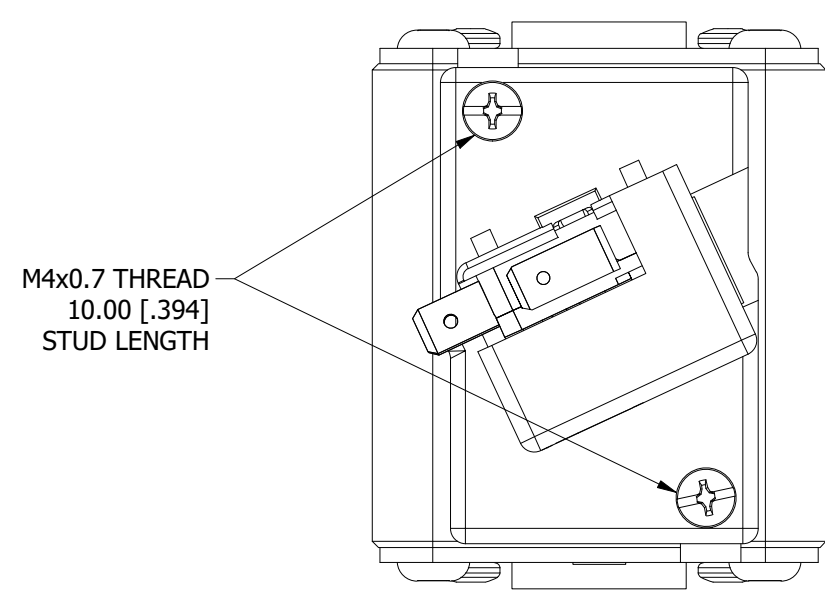
TITLE SQUARE BODY 71 CASE SIZE - METRIC THREAD OUTLINE

CHICAGO, ILLINOIS 60631	REVISION G	DRWG NO. OL-PSR071FL0000	SHEET 1 OF 1
-------------------------	---------------	-----------------------------	--------------

REVISION		
REV	DATE	DESCRIPTION
A	03/16/2016	517373GCP - RELEASED -TV
B	10/19/2017	518344ECP - REVISE STUD SIZE NOTES -TV
C	01/16/2018	518709ECP - CORRECT DIM -TV
D	8/30/18	519782ECP/D - CHG STUD TORQUE MRY
E	5/5/22	525161ECP/D - CHANGE HEIGHT, ADD TOLERANCES MRY
F	5/19/22	525232ECP/D - UPDATE LENGTH DIMENSION MRY
G	7/14/22	525433ECP/D - CHANGE HEIGHT DIMENSION FORMAT MRY
H	10/24/23	526836ECP/D - ADD VIEW W/O MICROSWITCH MRY

MOUNTING SPECS:  
 STUD SIZE: M10x1.5-6H  $\nabla$ 11.5[0.45]  
 STUD TORQUE: 26-35Nm

FUSE WITH MICROSWITCH



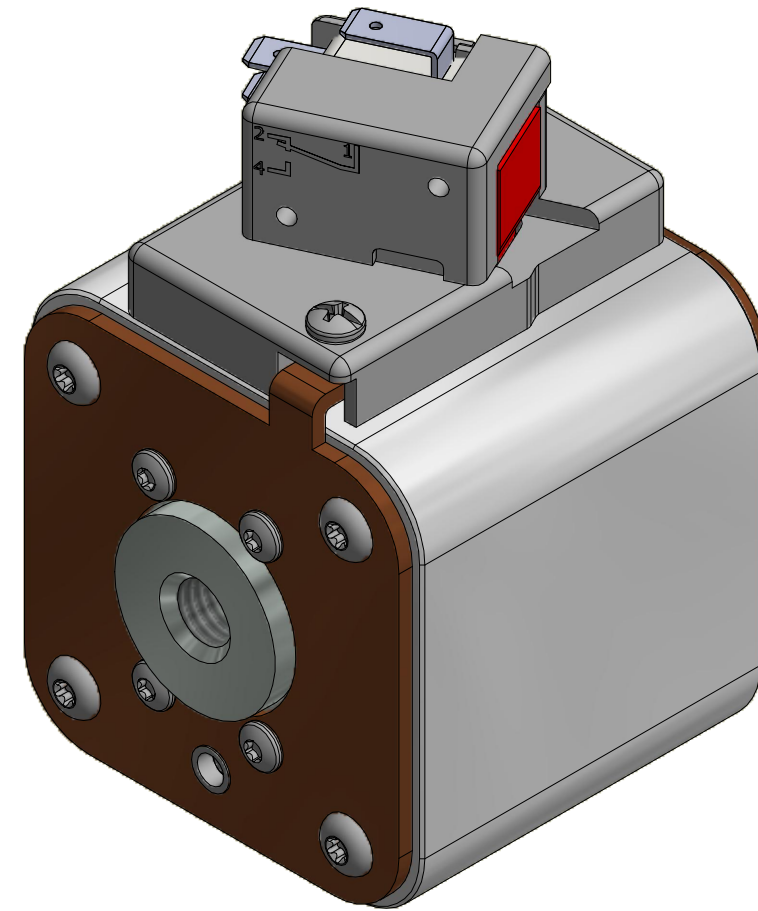
FUSE WITH MICROSWITCH

●	DENOTES CRITICAL CHARACTERISTICS.		
CPK	DENOTES CPK DIMENSIONS, -MINIMUM CPK VALUE		
(ST)	DENOTES A CHARACTERISTIC THAT PROVIDES AN INDICATION OF PROCESS PERFORMANCE. PROCEDURE FOR MEASUREMENT AND TRACKING TO BE DEFINED IN LITTELFUSE INSPECTION INSTRUCTIONS.		
CP	DENOTES CP DIMENSIONS, -MINIMUM CP VALUE MUST BE WITHIN THE DIMENSIONAL LIMITATIONS SHOWN ON DRAWING AND INITIALLY LOCATED TO ALLOW FOR MAXIMUM TOOL LIFE.		
MATL SPEC		FINISH	
DRW TVESELSK	DATE 2/15/2016	SCALE NTS	FINISH GOOD WT GRAMS/PIECE
UNLESS OTHERWISE SPECIFIED, DIMENSIONS ARE IN MILLIMETERS, DIMENSIONS IN BRACKETS [ ] ARE INCHES DIMENSIONING AND DO NOT INCLUDE PLATING. TOLERANCING TO BE INTERPRETED IN ACCORDANCE WITH ANSI Y14.5M-1994			
3RD ANGLE PROJECTION			
TITLE SQUARE BODY 72 CASE SIZE - METRIC THREAD OUTLINE			
Littelfuse® CHICAGO, ILLINOIS 60631		REVISION H	DRWG NO. OL-PSR072FL0000 SHEET 1 OF 1

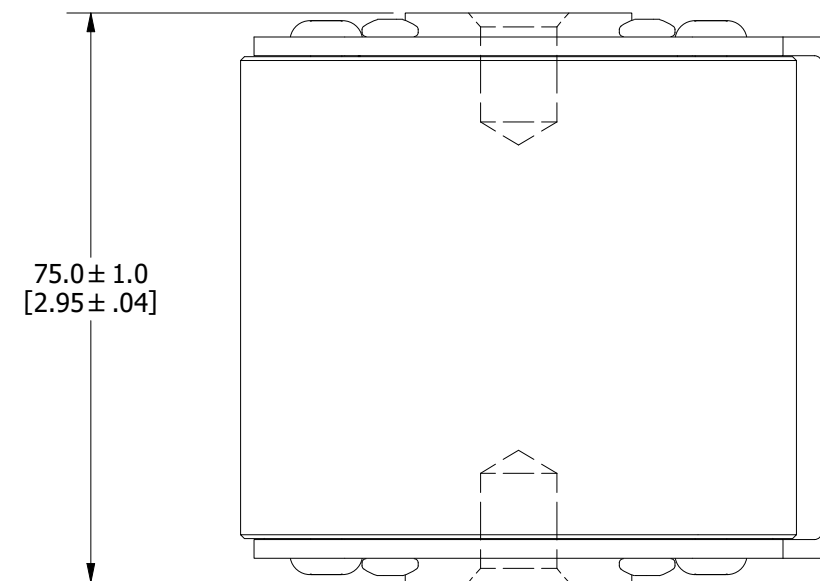
REVISION		DESCRIPTION
REV	DATE	
A	01/10/2018	518685GCP - RELEASED -TV
B	8/30/18	519782ECP/D - CHG STUD TORQUE MRY
C	5/5/22	525161ECP/D - CHANGE HEIGHT, ADD TOLERANCES MRY
D	5/19/22	525232ECP/D - UPDATE LENGTH DIMENSION MRY
E	7/14/22	525433ECP/D - CHANGE HEIGHT DIMENSION FORMAT MRY
F	10/24/23	526836ECP/D - ADD VIEW W/O MICROSWITCH MRY

MOUNTING SPECS:  
 STUD SIZE: M12x1.75-6H  $\nabla$  13.0 [0.51]  
 STUD TORQUE: 45-55Nm

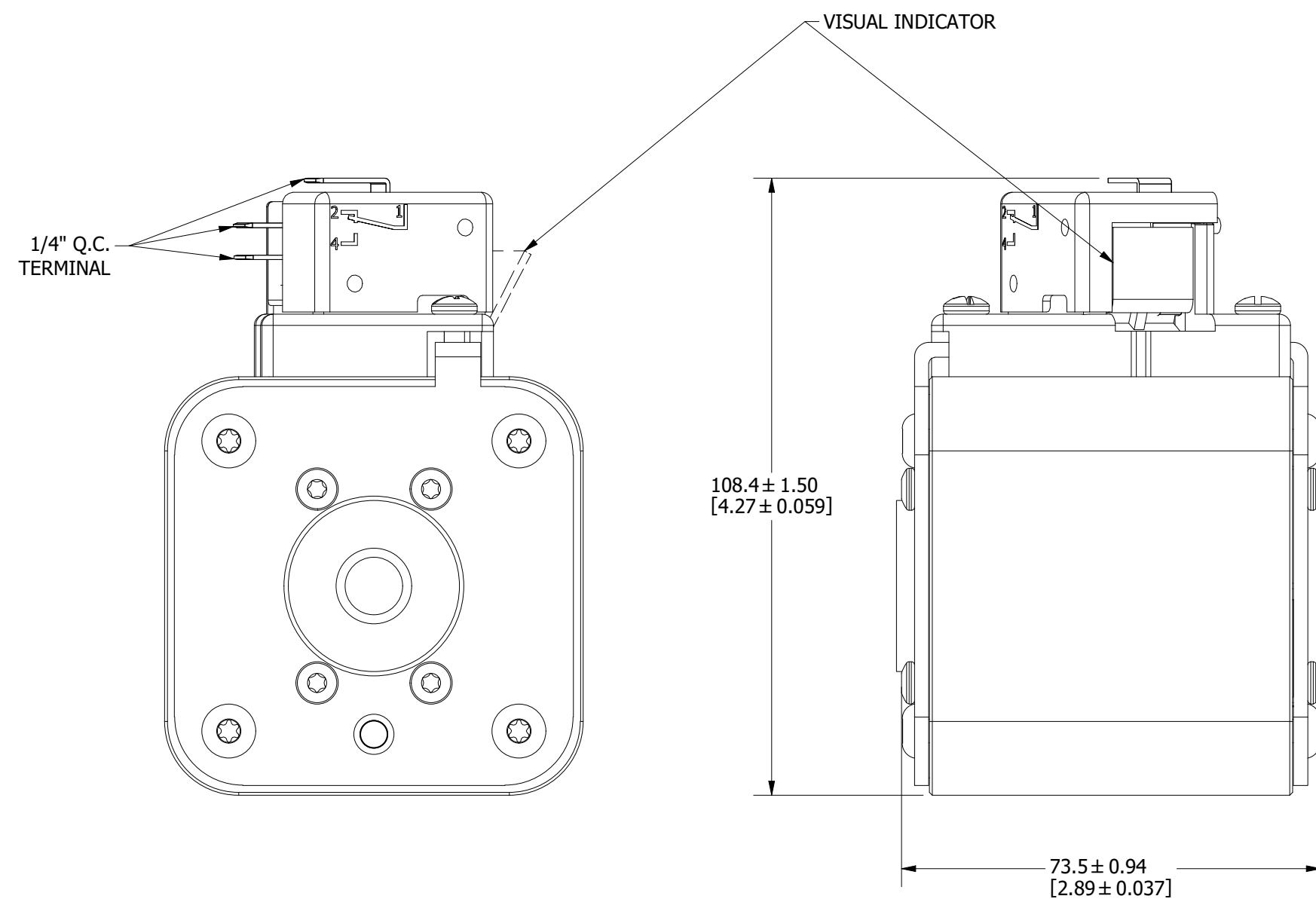
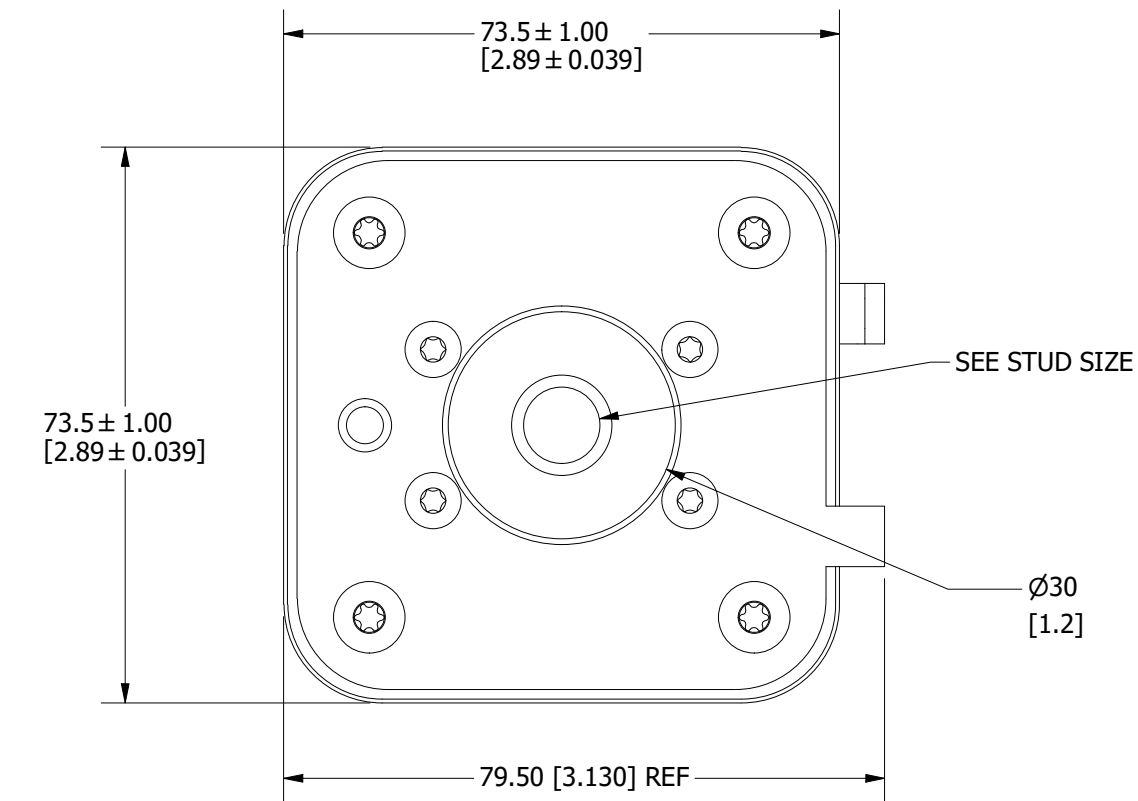
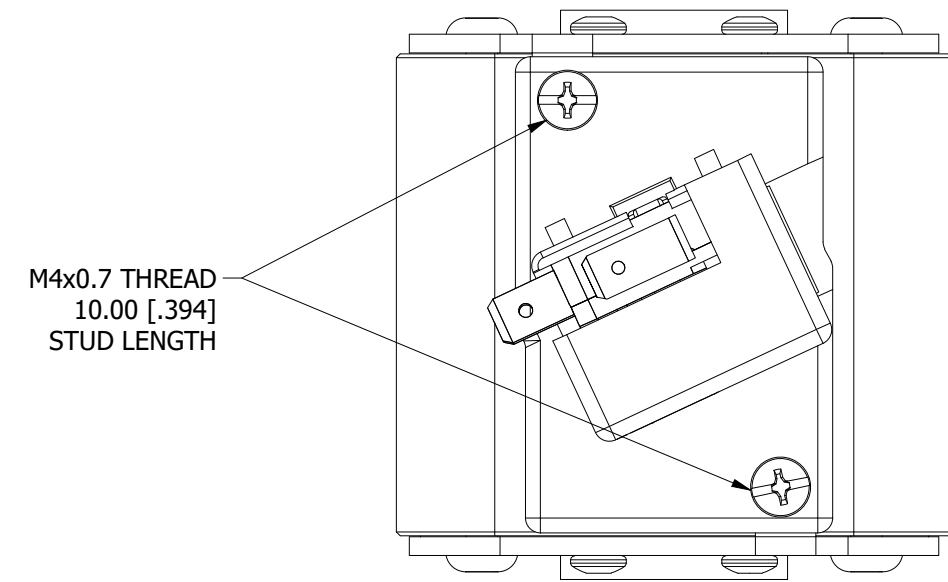
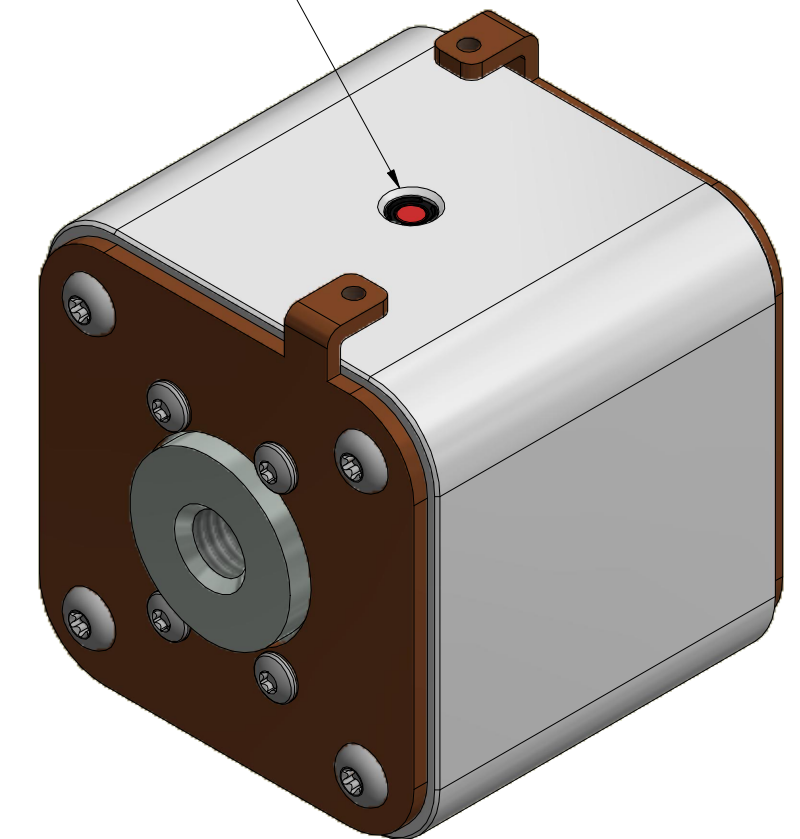
FUSE WITH MICROSWITCH



FUSE



INTERNAL INDICATOR



FUSE WITH MICROSWITCH

●	DENOTES CRITICAL CHARACTERISTICS.
CPK	DENOTES CPK DIMENSIONS, -MINIMUM CPK VALUE
(ST)	DENOTES A CHARACTERISTIC THAT PROVIDES AN INDICATION OF PROCESS PERFORMANCE. PROCEDURE FOR MEASUREMENT AND TRACKING TO BE DEFINED IN LITTELFUSE INSPECTION INSTRUCTIONS.
CP	DENOTES CP DIMENSIONS, -MINIMUM CP VALUE MUST BE WITHIN THE DIMENSIONAL LIMITATIONS SHOWN ON DRAWING AND INITIALLY LOCATED TO ALLOW FOR MAXIMUM TOOL LIFE.

MATL SPEC	FINISH		
DRW TVESELSK	DATE 2/4/2016	SCALE NTS	FINISH GOOD WT GRAMS/PIECE

UNLESS OTHERWISE SPECIFIED, DIMENSIONS ARE IN MILLIMETERS, DIMENSIONS IN BRACKETS [ ] ARE INCHES DIMENSIONING AND DO NOT INCLUDE PLATING. TOLERANCING TO BE INTERPRETED IN ACCORDANCE WITH ANSI Y14.5M-1994



TITLE SQUARE BODY 73 CASE - METRIC THREAD OUTLINE