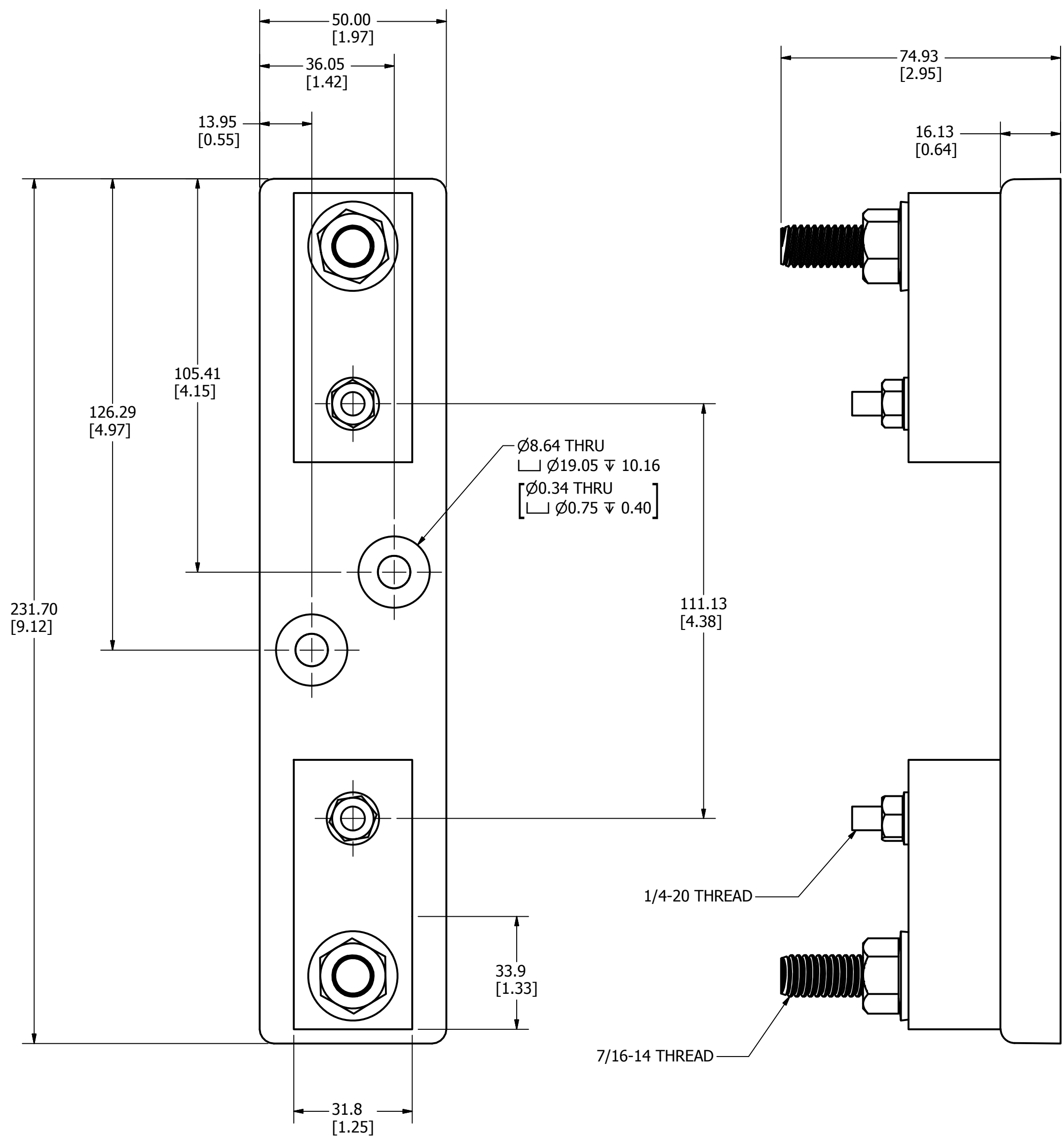


REVISION		
REV	DATE	DESCRIPTION
A	8/23/2011	50310SERP - RELEASE MRY
B	7/18/2012	50544TECP/C-CHG - REPLACE BASE WITH CURRENT DESIGN -TV
C	12/20/2012	507000ECP - ADD DIMS AND THREAD CALLOUT -TV



SPECIFICATIONS:

- VOLTAGE RATING:** 1000VDC
- AMPERE RATING:** 200 AMPERES
- INTERRUPT RATING:** 20kA
- TERMINAL TYPE:** STUD
- TERMINAL TORQUE:** 22.6 N-m (200 in-lb)
- FUSE TORQUE:** 7.3 N-m (65 in-lb)
- APPROVALS:** UL LISTED (UL 4248-18)

●	DENOTES CRITICAL CHARACTERISTICS.		
CPK	DENOTES CPK DIMENSIONS, -MINIMUM CPK VALUE		
(ST)	DENOTES A CHARACTERISTIC THAT PROVIDES AN INDICATION OF PROCESS PERFORMANCE. PROCEDURE FOR MEASUREMENT AND TRACKING TO BE DEFINED IN LITTELFUSE INSPECTION INSTRUCTIONS.		
CP	DENOTES CP DIMENSIONS, -MINIMUM CP VALUE MUST BE WITHIN THE DIMENSIONAL LIMITATIONS SHOWN ON DRAWING AND INITIALLY LOCATED TO ALLOW FOR MAXIMUM TOOL LIFE.		
MATL SPEC		FINISH	
DRW TVESELSK	DATE 8/23/2011	SCALE NTS	FINISH GOOD WT GRAMS/PIECE
UNLESS OTHERWISE SPECIFIED, DIMENSIONS ARE IN MILLIMETERS, DIMENSIONS IN BRACKETS [] ARE INCHES DIMENSIONING AND DO NOT INCLUDE PLATING. TOLERANCING TO BE INTERPRETED IN ACCORDANCE WITH ANSI Y14.5M-1994			
3RD ANGLE PROJECTION			
TITLE LFJ10200STST OUTLINE			
Littelfuse CHICAGO, ILLINOIS 60631		REVISION C	DRWG NO. OL-LFJ102001STST

C