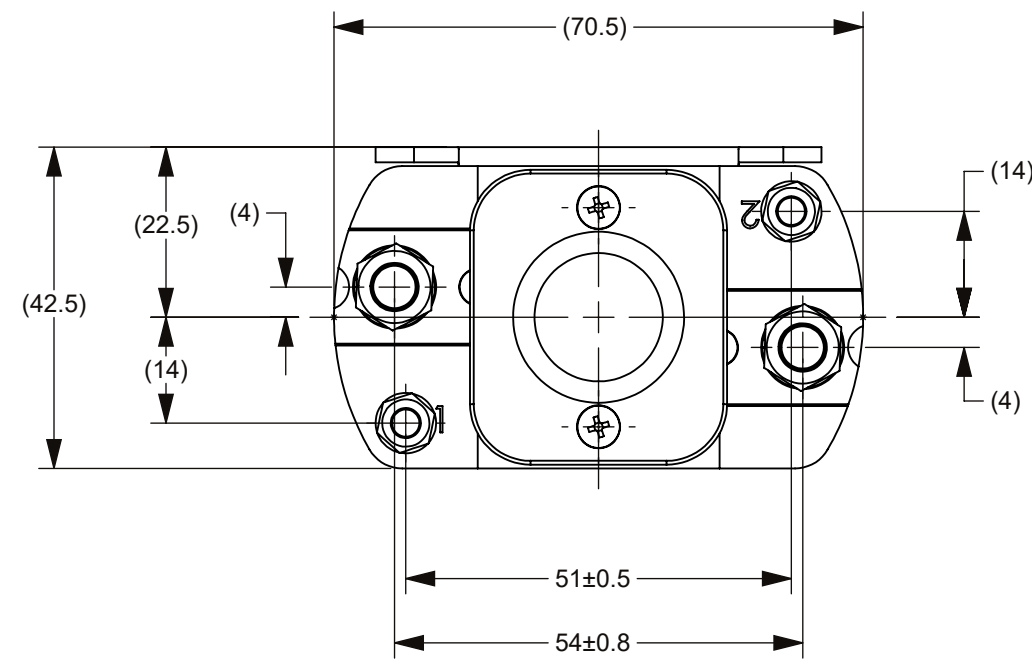


| REVISIONS | | | | |
|-----------|------|----------------------------|--------------|----------|
| ZONE | REV. | DESCRIPTION | DATE | APPROVED |
| | A | GCF#524853 INITIAL RELEASE | NOV./10/2021 | D. ZHANG |



CIRCUIT SCHEMATIC DIAGRAM

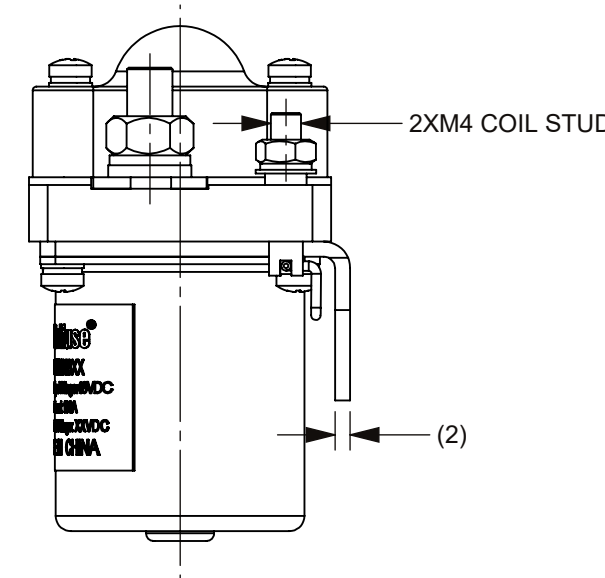
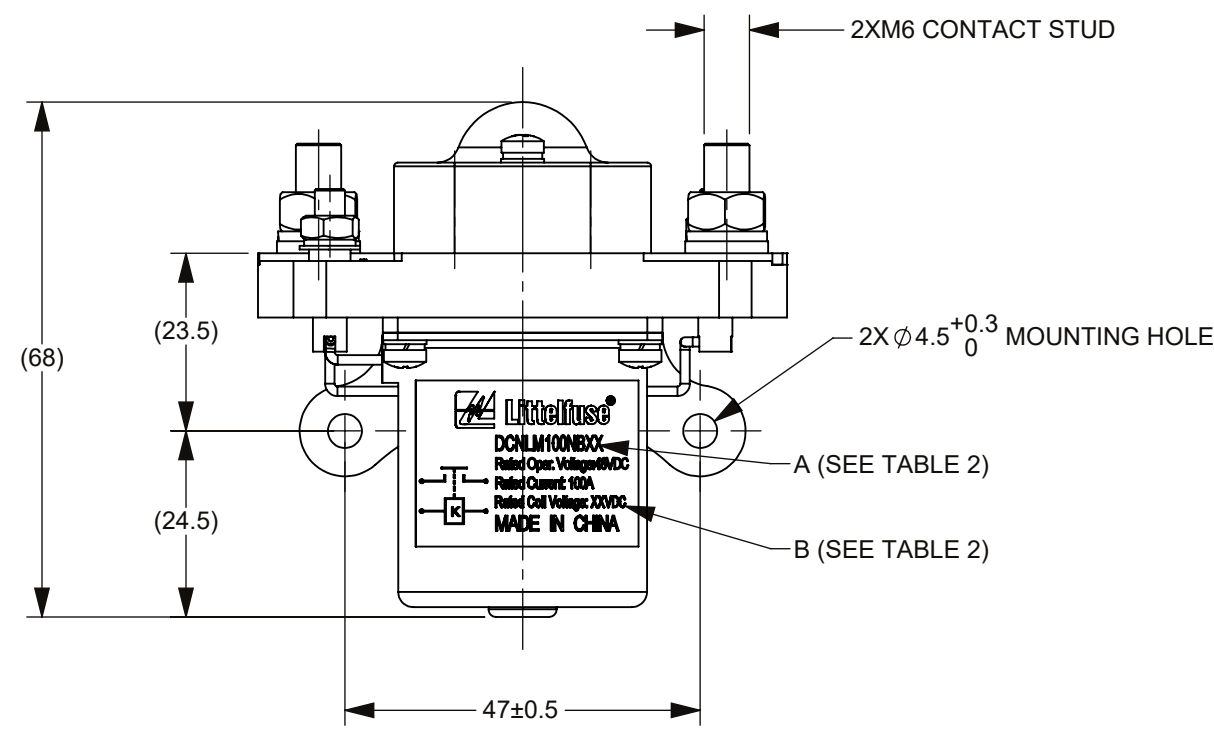
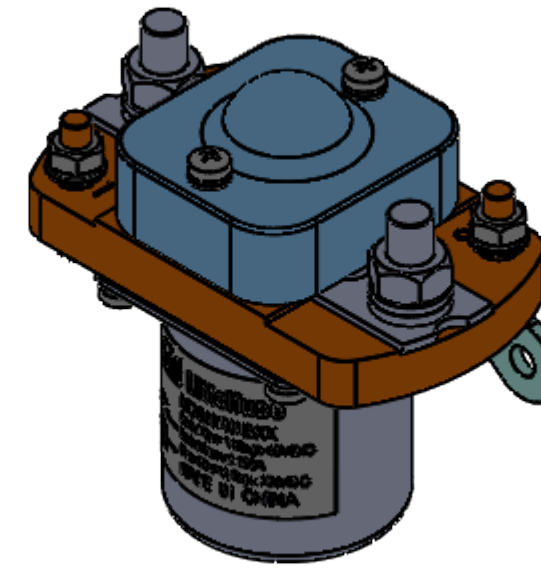
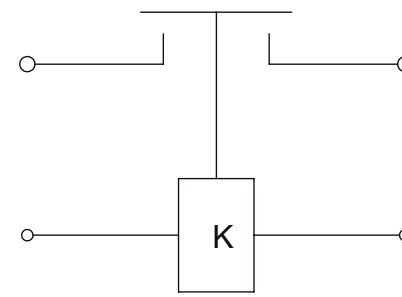


TABLE 1: TECHNICAL PARAMETERS

| ITEM | PARAMETER | | |
|---|---|--------------|--------------|
| | DCNLM100NB12 | DCNLM100NB24 | DCNLM100NB48 |
| RATED COIL VOLTAGE | 12V DC | 24V DC | 48V DC |
| HOLD POWER | MAX 6W | | |
| OPERATING VOLTAGE IN COLD STATE AT (20±5)°C | PICKUP | MAX 8.4V DC | MAX 16.8V DC |
| | RELEASE | MIN 1V DC | MIN 1.9V DC |
| OPERATE TIME | MAX 30ms | | |
| RELEASE TIME | MAX 30ms | | |
| BOUNCE TIME | MAX 7ms | | |
| RATED CONTACT VOLTAGE | 48V DC | | |
| MAXIMUM CONTACT VOLTAGE | 60V DC | | |
| RATED CONTACT CURRENT | 100A | | |
| CONTACT VOLTAGE DROP | ≤80mV@100 A | | |
| LIMIT BREAKING ABILITY | 4le/5ms,1CYCLES | | |
| DIELECTRIC STRENGTH | 1000V AC, 50Hz,1min., LEAKAGE CURRENT ≤1 mA | | |
| INSULATION RESISTANCE | ≥50MΩ@500VDC | | |
| ELECTRIC LIFE | 10000 CYCLES | | |
| MECHANICAL LIFE | 100,000 CYCLES | | |
| WORKING DUTY | CONTINUOUS | | |

NOTES:

- ALL SIZES ARE FOR REFERENCE ONLY.
- MATERIALS AND FINISH:
 - 2.1 BASE: THERMOSETTING PLASTIC, UL94V-0.
 - 2.2 CONTACTS: SILVER ALLOY.
 - 2.3 COIL STUD: COPPER ALLY, SILVER PLATED.
- PRODUCT TECHNICAL PARAMETERS: SEE TABLE 1.
- PRODUCT AND NAMEPLATE(THE CHARACTER CONTENT AT "A" AND "B") CONFIGURATION SEE TABLE 2.
- CONTACT ARRANGEMENT: SPST-NO.
- CONNECTION STUD: M6 STUD, RECOMMENDED TORQUE 4 N·m ~ 6 N·m; M4 STUD, RECOMMENDED TORQUE 1.7 N·m ~ 2.5 N·m.
- MOUNTING: M4 BOLT, RECOMMENDED TORQUE 1.7 N·m ~ 2.5 N·m.

TABLE 2 P/N AND CONFIGURATION

| P/N | "A" | "B" |
|--------------|--------------|---------------------------|
| DCNLM100NB12 | DCNLM100NB12 | Rated Coil Voltage: 12VDC |
| DCNLM100NB24 | DCNLM100NB24 | Rated Coil Voltage: 24VDC |
| DCNLM100NB48 | DCNLM100NB48 | Rated Coil Voltage: 48VDC |

DIMENSIONS ARE SHOWN IN MILLIMETERS. DIMENSIONS AND TOLERANCES ARE DEFINED ACCORDING TO ANSI/ASME Y14.5-1994.

| | |
|------|--|
| ● | FTI/ FUNCTION CRITICAL CHARACTERISTICS |
| <S> | SAFETY/ COMPLIANCE CRITICAL CHARACTERISTICS SYMBOL |
| CPK | DENOTES CPK DIMENSIONS MINIMUM CPK VALUE |
| (ST) | DENOTES A CHARACTERISTIC THAT PROVIDES AN INDICATION OF PROCESS PERFORMANCE PROCEDURE FOR MEASUREMENT AND TRACKING TO BE DEFINED IN LITTELFUSE INSPECTION INSTRUCTIONS |
| CP | DENOTES CP DIMENSIONS. -MINIMUM CP VALUE MUST BE WITHIN THE DIMENSIONAL LIMITATIONS SHOWN ON DRAWING AND INITIALLY LOCATED TO ALLOW FOR MAXIMUM TOOL LIFE |

| NAME | DATE | Expertise Applied Answers Delivered |
|------------------------------|--------------|---|
| DRAWN: V. ZHANG | NOV./10/2021 | |
| CHECKED: J. LI | NOV./30/2021 | |
| FORM NO: CVP-PE40-0005 REV B | | TITLE |
| THIRD ANGLE PROJECTION | | DCNLM 100A 48V COIL CONTACTOR |
| DO NOT SCALE DRAWING | SCALE 1:1 | REV. A |