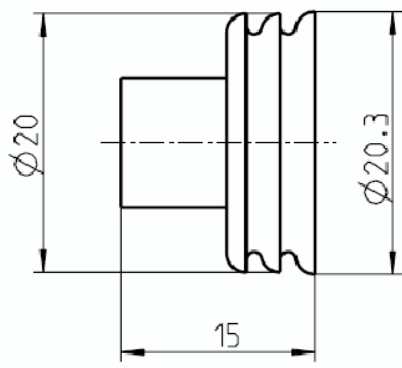
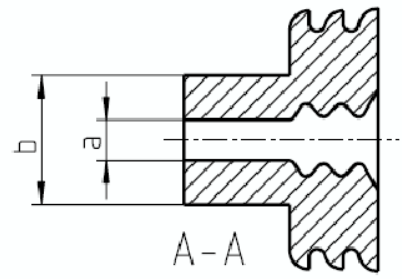
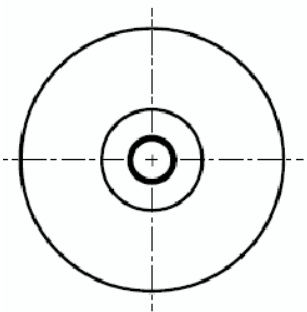


CAD GENERATED DRAWING - NO PENCIL CHANGES ALLOWED

PART NUMBER	DIM "b"	DIM "a"	COLOR
868-906	Ø10.0	Ø4.4	GREY



METRIC
COMPONENT

UNLESS OTHERWISE SPECIFIED, DIMENSIONS ARE IN MILLIMETERS.
DIMENSIONS IN BRACKETS [] ARE INCHES
UNLESS OTHERWISE SPECIFIED, DIMENSIONS DO NOT INCLUDE PLATING.

© DENOTES CRITICAL CHARACTERISTICS.
CPK DENOTES CPK DIMENSIONS, -MINIMUM CPK VALUE
ST DENOTES A CHARACTERISTIC THAT PROVIDES AN INDICATION OF PROCESS PERFORMANCE. PROCEDURE FOR MEASUREMENT AND TRACKING TO BE DEFINED IN LITTELFUSE INSPECTION INSTRUCTIONS
CP DENOTES CP DIMENSIONS, -MINIMUM CP VALUE
MUST BE WITHIN THE DIMENSIONAL LIMITATIONS SHOWN ON DRAWING AND INITIALLY LOCATED TO ALLOW FOR MAXIMUM TOOL LIFE

NO	COMPONENT NO	DESCRIPTION	QTY/M	U/M
BILL OF MATERIAL				

COPIES TO		MATL SPEC	SILICON RUBBER, SHORE 45:5
1	9	FINISH	
2	10		
3	12	SCALE	N/A
4	13	DATE	03/20/09
5	14	DRW	GMB
6	15	DATE	
7	16	CHK	SUPER DR
8	17	DATE	
	18	APPD	FINISH GOOD WT
			GMB/PIECE

TOLERANCES UNLESS OTHERWISE SPECIFIED DIN 7715-M2

LTR	DATE	REVISION	CHK	APD
A	03/20/09	00838ER-RELEASE GMB		

3RD ANGLE PROJECTION

TITLE WIRE SEAL FOR Ø6-10mm

REVISION DRWG. NO. A

OUTLINE 868-906

LITTELFUSE
DES. PLINNES, ILLINOIS 60116