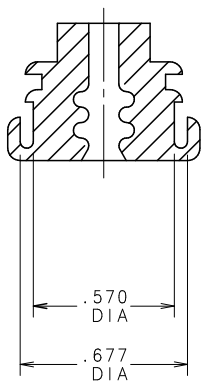


NOTES:

1. STANDING FLASH 0.025 MAXIMUM PERMISSIBLE AT PARTING LINE.
2. STANDING FLASH 0.010 MAXIMUM PERMISSIBLE ALL OTHER AREAS.
3. MATERIAL SPECIFICATION: HIGH CONSISTENCY RUBBER (HCRP)
4. CAVITY NUMBER AND MOLDING GATES PERMITTED ON THIS SURFACE. MAXIMUM HEIGHT 0.007.



868-096	GRAY	.173 DIA
868-095	BLUE	.115 DIA
PART NO	COLOR	DIA "A"

UNLESS OTHERWISE SPECIFIED, DIMENSIONS DO NOT INCLUDE PLATING.

CPK DENOTES CRITICAL CHARACTERISTICS.

CPK DENOTES CPK DIMENSIONS - MINIMUM CPK VALUE

CPK DENOTES A CHARACTERISTIC THAT PROVIDES AN INDICATION OF PROCESS PERFORMANCE. THE PROCEDURE FOR MEASUREMENT OF CPK IS DESCRIBED IN THE SUPPLIER'S QUALITY CONTROL INSTRUCTIONS.

CPK DENOTES CP DIMENSIONS - MINIMUM CP VALUE (CPK) DENOTES CP DIMENSIONS WITHIN THE DIMENSIONAL LIMITATIONS OF THE DRAWING AND FINALLY LOCATED TO THE DRAWING FOR MAXIMUM TOOL LIFE.

CONTROLLED DOCUMENT

NO	COMPONENT NO	DESCRIPTION	QTY/M	U/M		
BILL OF MATERIAL						
COPIES TO		MATL SPEC	SEE NOTE 3	FINISH		
1	9	DRW	DHM	DATE 05/23/08		
2	10	19	CHK	DATE		
3	12	20	4	13	21	DATE
4	13	21	APPD	DATE		
5	14	23	6	15	33	RAW STK WT
6	15	33	TOLERANCE UNLESS OTHERWISE SPECIFIED			
7	16	43	TWO PLACE DEC ±.01 FRACTION ±			
8	17	53	THREE PLACE DEC ±.005 ANGULAR ±1°			
TITLE						
SEAL SPLASH-PROOF MAXI FUSE HOLDER						
LTR	REVISION			CHK		
A	000402ER - RELEASED 05/23/08			DHM		
VERSION		DRWG. NO.	OUTLINE			
A		868-095	868-096			
DES PLAINES, ILLINOIS 60016		Littelfuse®				