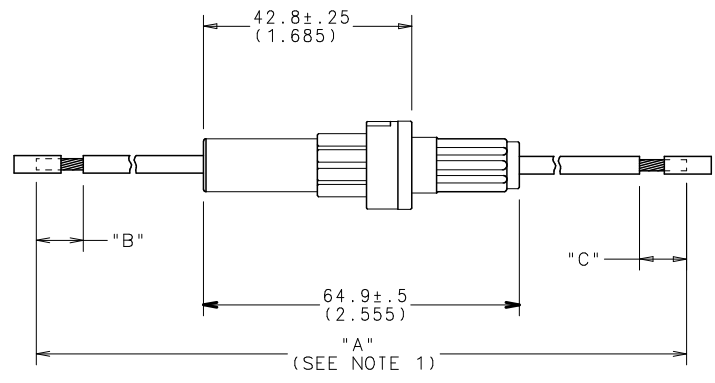


PART No.	WIRE GA. / COLOR	"A" (REF)	"B"	"C"
OFNY0002ZXJ	# 12 ORANGE	266.7 (10.5)	9.65±2 (.38)	9.65±2 (.38)



- NOTES:
1. DIMENSION "A" MEASURED WITH FUSE INSTALLED.
  2. MAX RATING: 30A, 32VDC.
  3. MAX. TEMPERATURE: 80°C.
  4. WIRE: COPPER STRANDED, GXL.
  5. CONTACTS: C1100 ALLOY.
  6. CRIMP: MUST MEET USCAR 21 STANDARD.

UNLESS OTHERWISE SPECIFIED, DIMENSIONS DO NOT INCLUDE PLATING.

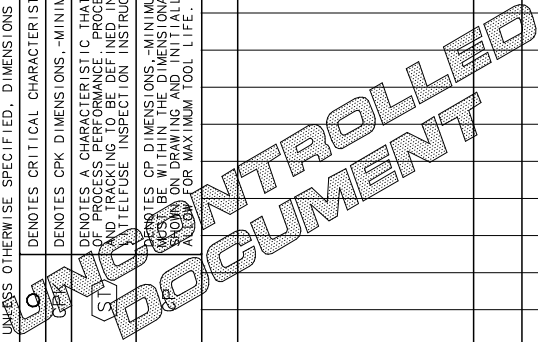
CPK DENOTES CRITICAL CHARACTERISTICS.

CPK DENOTES CPK DIMENSIONS--MINIMUM CPK VALUE

(S) DENOTES A CHARACTERISTIC THAT PROVIDES AN INDICATION OF PROCESS PERFORMANCE. PROCEDURE FOR MEASUREMENT OF THIS CHARACTERISTIC IS LOCATED IN THE FUSE INSPECTION INSTRUCTIONS.

CPK DENOTES CP DIMENSIONS--MINIMUM CP VALUE

(S) DENOTES CP DIMENSIONS WITHIN THE DIMENSIONAL LIMITATIONS OF THE DRAWING AND FINALLY LOCATED TO AROUND FOR MAXIMUM TOOL LIFE.



COPIES TO		MATERIAL SPEC		FINISH	
1	9 18	DRW	DHM	DATE	09/05/08
2	10 19	CHK		DATE	
3	12 20			DATE	
4	13 21	APPD		DATE	
5	14 23				
6	15 33				
7	16 43				
8	17 53				
		TOLERANCE UNLESS OTHERWISE SPECIFIED			
		TWO PLACE DEC ±.01 FRACTION ±			
		THREE PLACE DEC ±.005 ANGULAR ±1°			
		LBS/M			
		SCALE 1=1			
		SUPER DRW			
		RAW STK WT			
		TITLE			
		FUSEHOLDER, INLINE (WITH FUSE)			
		REVISION		DRAWG. NO.	
		A		OFNY0002ZXJ	
		OUTLINE			

LTR	REVISION	CHK	APD
A	000490ER-RELEASED 9/05/08	DHM	

