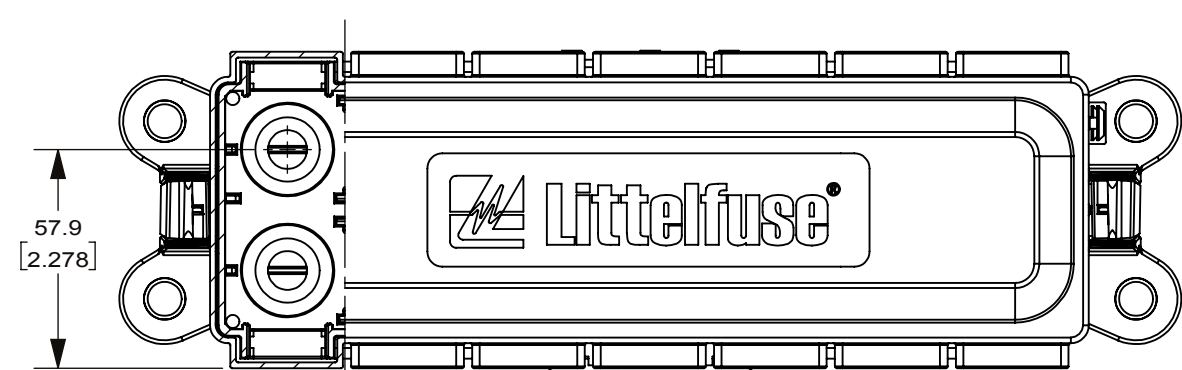
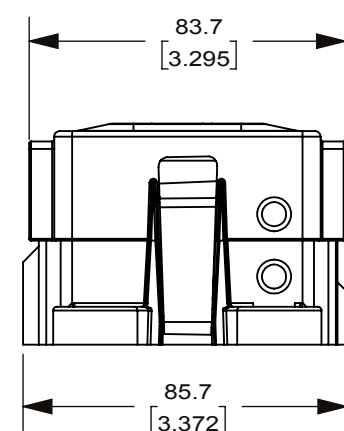
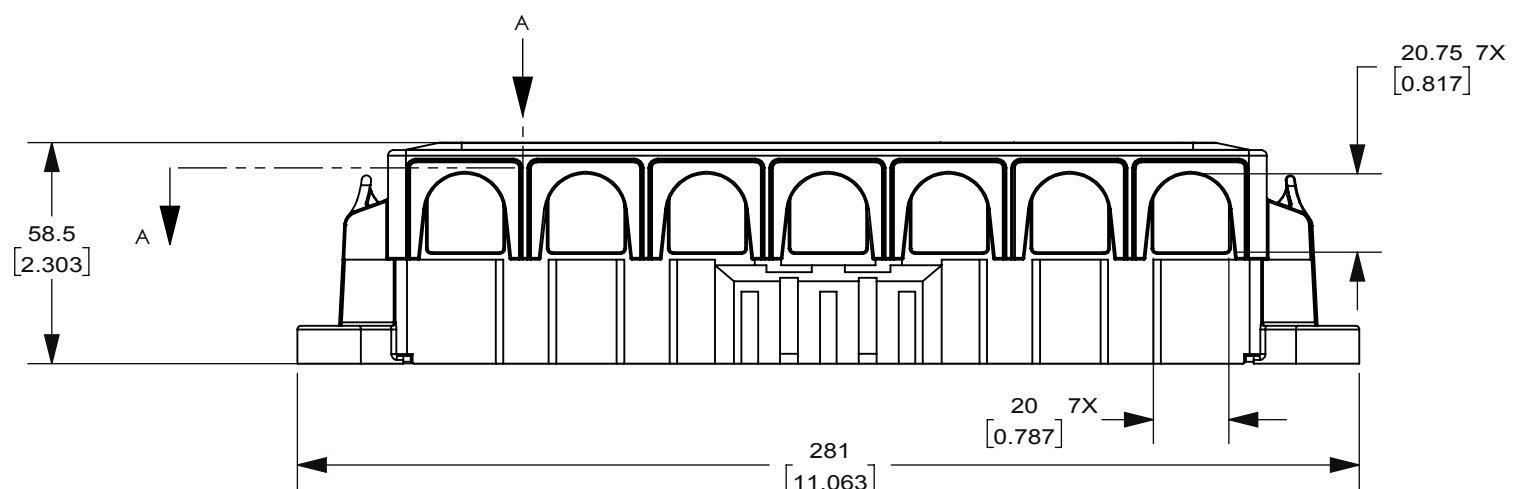
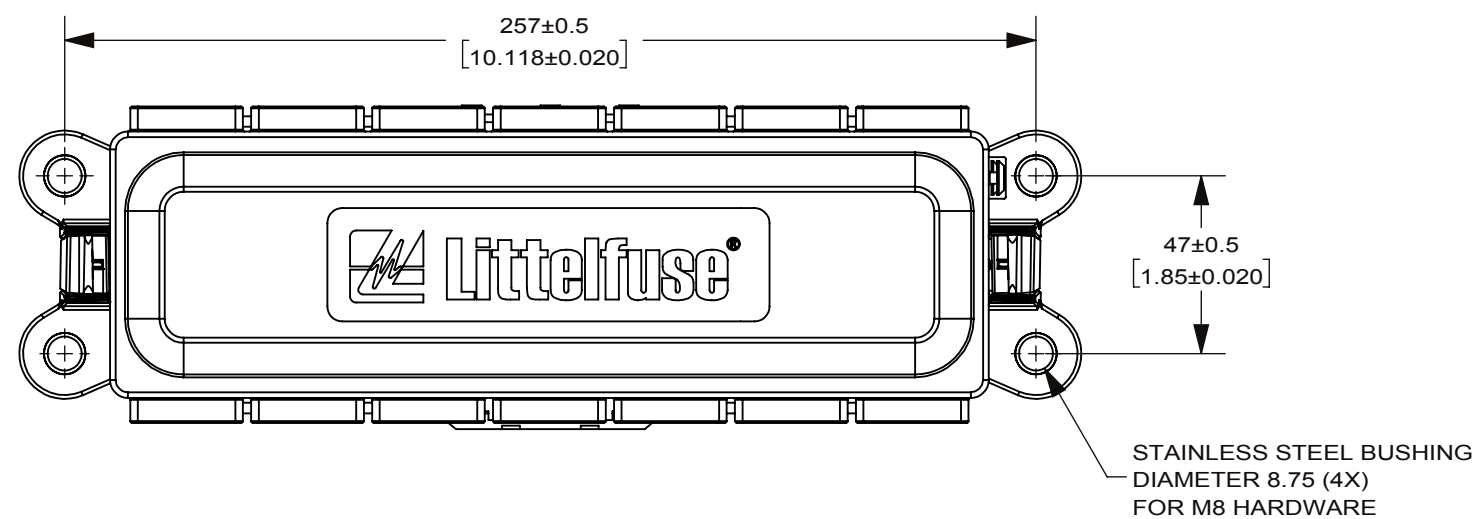
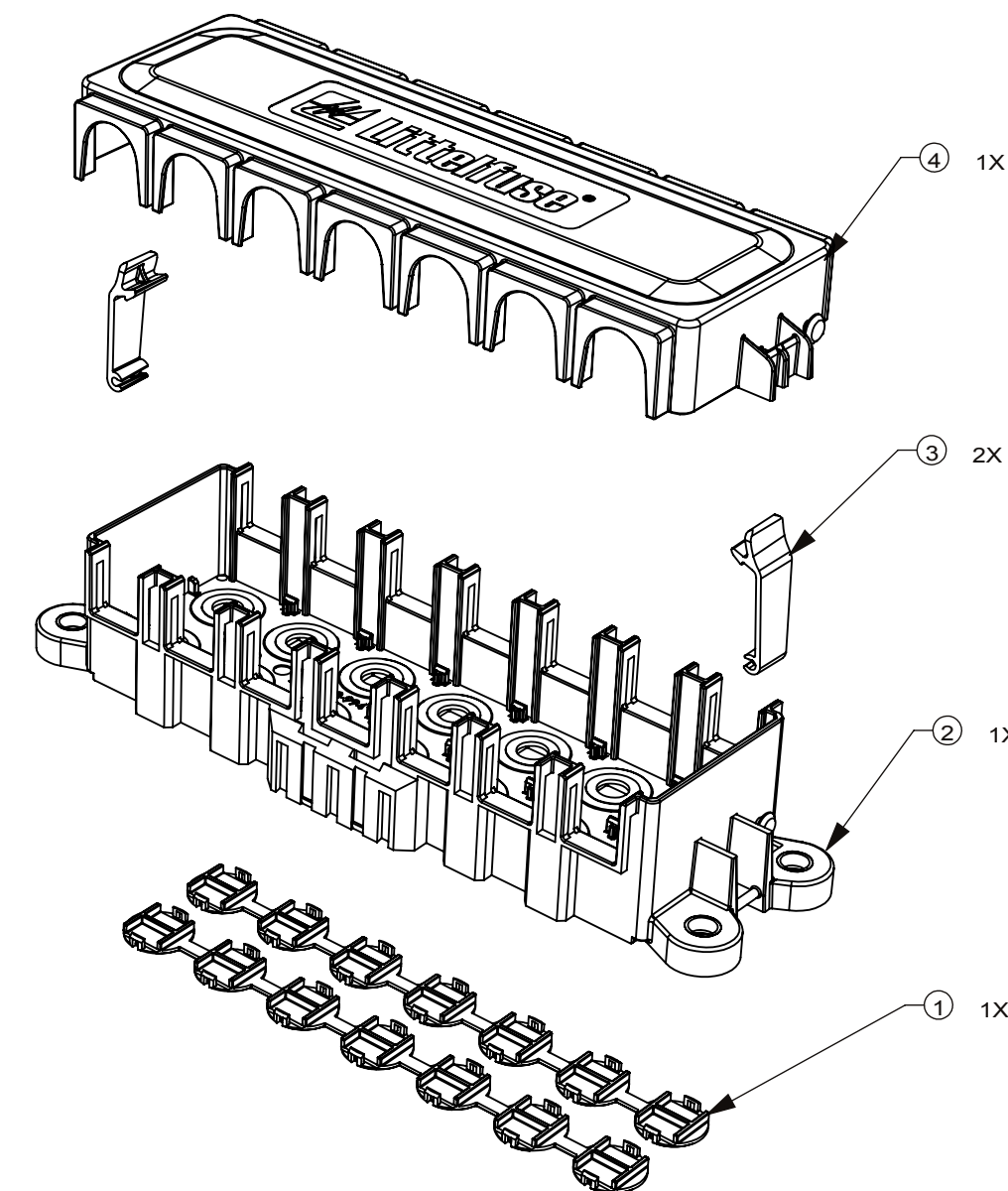
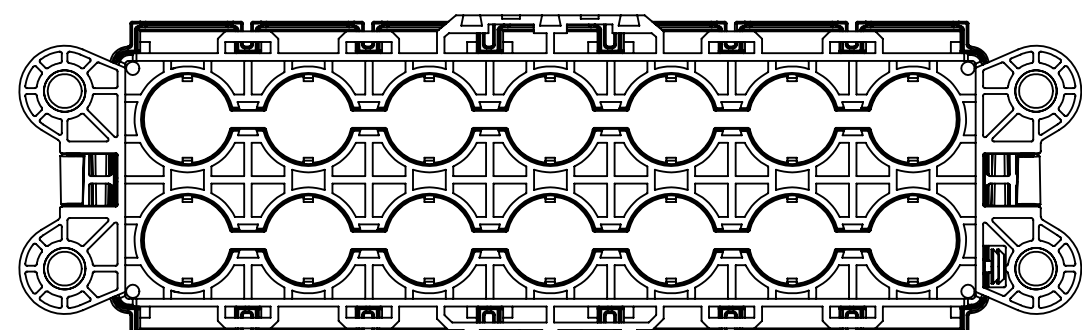


| REVISIONS | | | | |
|-----------|------|-------------------------------|-----------|----------|
| ZONE | REV. | DESCRIPTION | DATE | APPROVED |
| | A | 520253GCC-NEW RELEASE DRAWING | 23/May/19 | |



SECTION A-A



NOTES:

- MATERIALS:
BASE/COVER: PET WITH GF (UL-94V0)
BOTTOM CAP: PA66
LATCH: POM
- MAX. MAIN INPUT: 400A
- OPERATING TEMPERATURE RANGE: -40 °C TO 85 °C
- M8 MOUNTING TORQUE: 12-15 Nm
- MAX. WIRE SIZE 105 sqmm OR AWG 4/0

| NO. | COMPONENT NO. | COMPONENT NAME | QTY/M | U/M |
|-----|---------------|----------------|-------|-----|
| 4 | 873-723 | COVER | 1 | EA |
| 3 | 883-088 | LATCH | 2 | EA |
| 2 | 868-994 | BASE | 1 | EA |
| 1 | 883-097 | BOTTOM CAP | 2 | EA |

DIMENSIONS ARE SHOWN IN MILLIMETERS. DIMENSIONS AND TOLERANCES ARE DEFINED ACCORDING TO ANSI/ASME Y14.5-1994.

| | |
|-----|--|
| ● | DENOTES PRODUCTS CRITICAL CHARACTERISTICS |
| CPK | DENOTES CPK DIMENSIONS MINIMUM CPK VALUE |
| ST | DENOTES A CHARACTERISTIC THAT PROVIDES AN INDICATION OF PROCESS PERFORMANCE PROCEDURE FOR MEASUREMENT AND TRACKING TO BE DEFINED IN LITTELFUSE INSPECTION INSTRUCTIONS |
| CP | DENOTES CP DIMENSIONS. MINIMUM CP VALUE MUST BE WITHIN THE DIMENSIONAL LIMITATIONS SHOWN ON DRAWING AND INITIALLY LOCATED TO ALLOW FOR MAXIMUM TOOL LIFE |

TOLERANCES UNLESS OTHERWISE SPECIFIED
ONE PLACE DECIMAL ± 0.5 THREE PLACES DECIMAL ± 0.100
TWO PLACES DECIMAL ± 0.20 ANGULAR ± 2°

| | | |
|------------------------|--------------|--|
| NAME | DATE | <p>Expertise Applied Answers Delivered</p> |
| DRAWN FRANK YUE | 26/Dec/17 | |
| CHECKED | | TITLE |
| | | UNSEALED 6-WAY ZCASE FUSE BOX |
| THIRD ANGLE PROJECTION | | SIZE |
| | | C |
| DO NOT SCALE DRAWING | DWG. NO. | REV. |
| SCALE 1:2 | OL-DFHZ0008Z | A |
| | | SHEET 1 OF 1 |