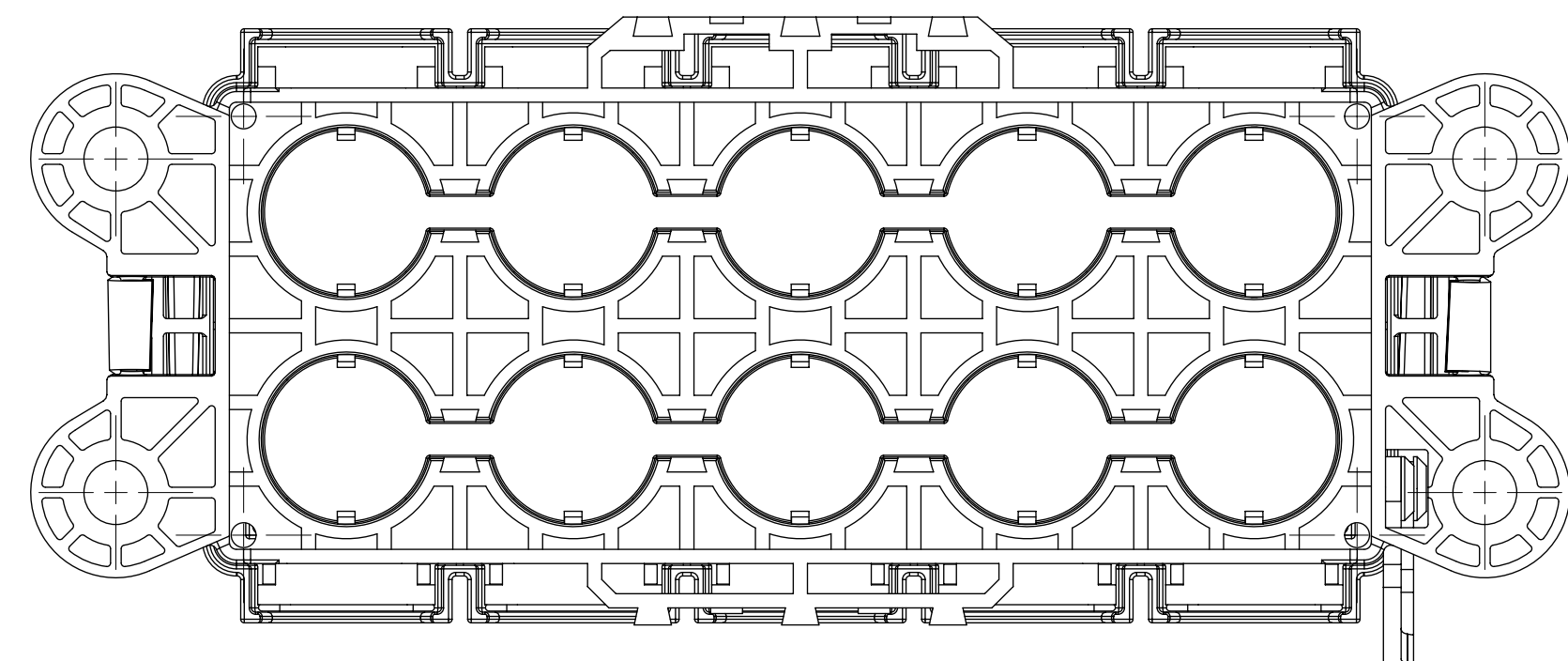
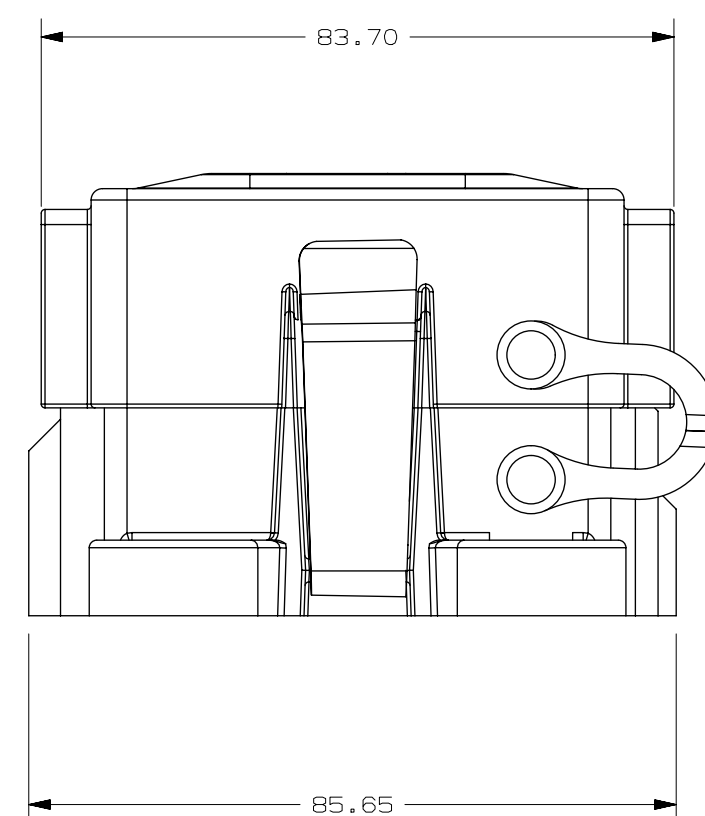
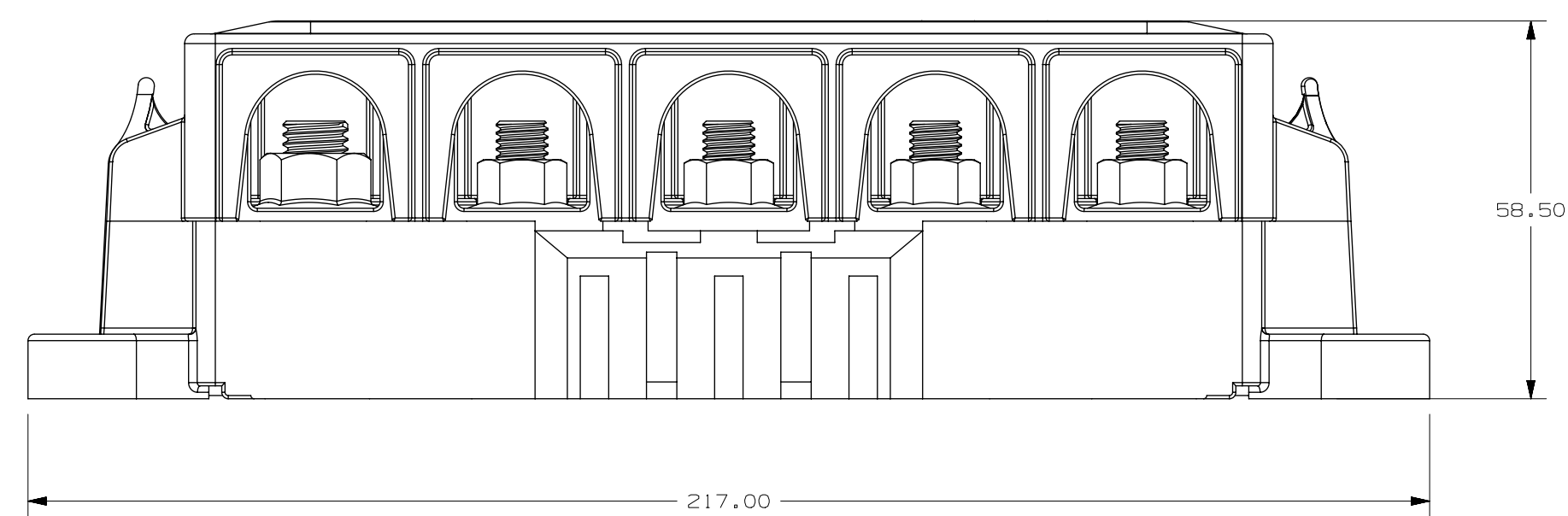
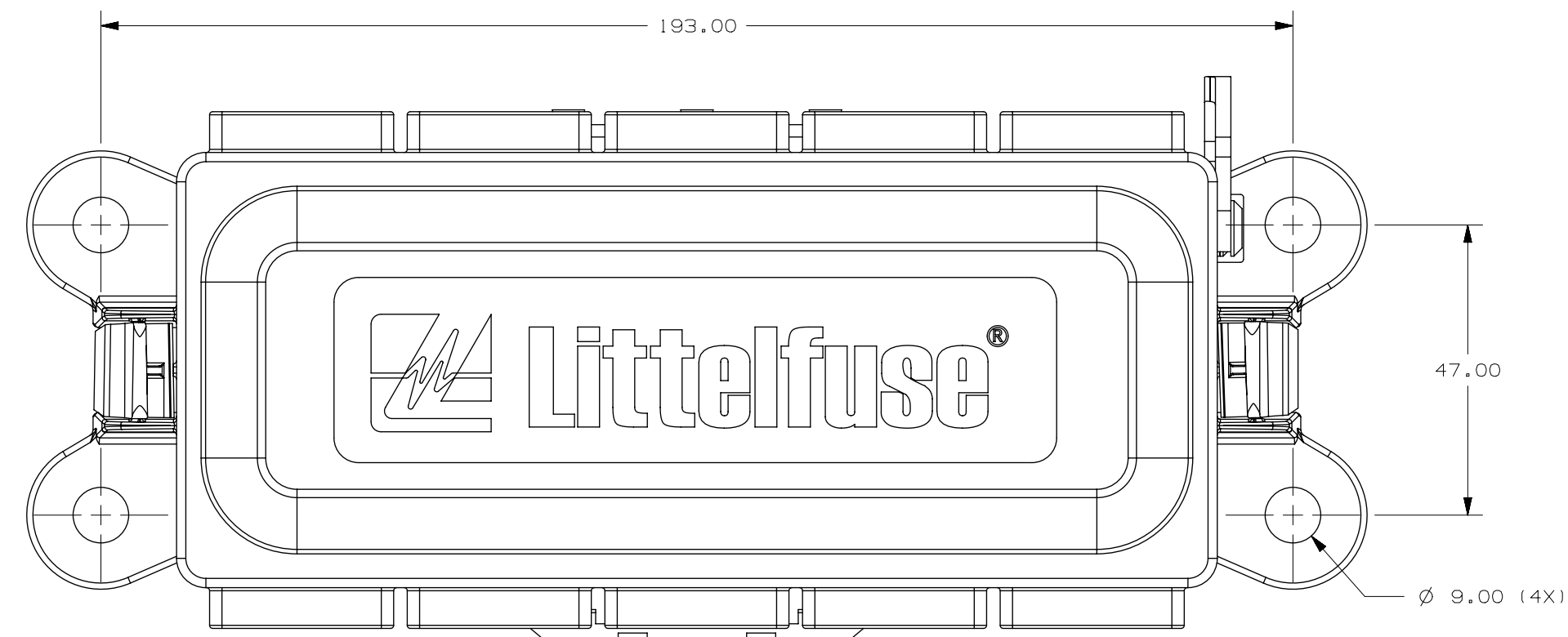


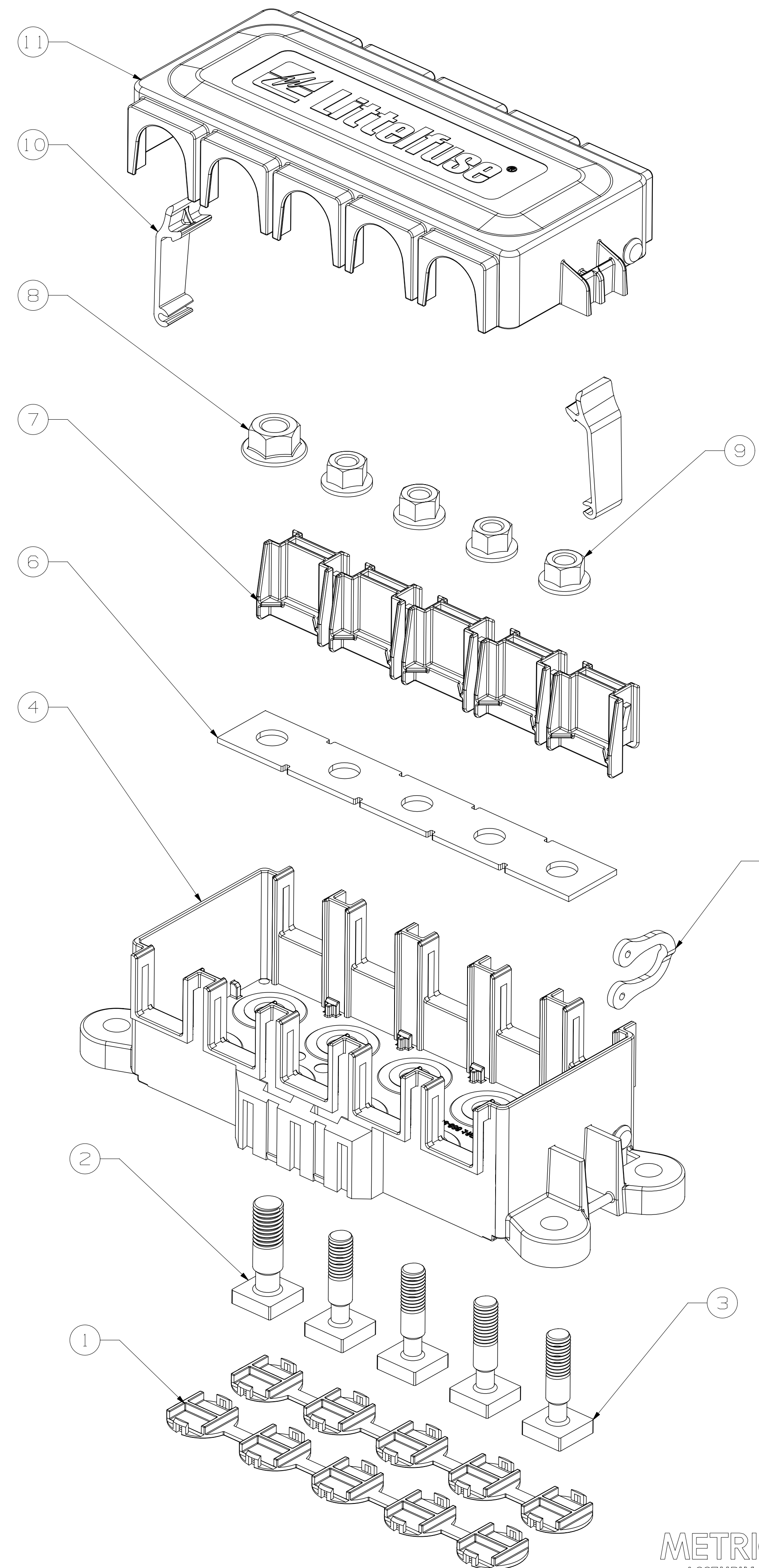
PART NUMBER	WITH BOX
OFHZ0002Z	NONE
OFHZ0002Z-BX	CA-606



NOTES:

1. MATERIALS:  
 BASE/COVER: BLACK FR530  
 BUS BARR: C1100 Sn PLATED  
 TETHER: BLACK SILICON RUBBER  
 DUST COVER: GREEN SILICON RUBBER  
 STUD: STEEL Zn/Pb ALLOY PLATED  
 BOTTOM CAP: BLUE PA66  
 LATCH: YELLOW POM  
 FLANGE NUT: STAINLESS STEEL
2. MAX. MAIN INPUT: 400A
3. OPERATING TEMPERATURE RANGE: -40°C TO 85°C
4. MB MOUNTING TORQUE: 10±2 Nm
5. MAX. WIRE SIZE 105 sqmm OR AWG 4/D.

LTR	DATE	REVISION	CHK	APD
A	26/Jun/18	5184976CC-NEW RELEASE	FYUE	



NO	COMPONENT NO	DESCRIPTION	QTY/M	U/M
11	873-716	COVER	1	EA
10	883-088	LATCH	2	EA
9	980003760	MB NUT	4	EA
8	890000670	M10 NUT	1	EA
7	901-520	DUST COVER	5	EA
6	882-869-5	BUS BAR	1	EA
5	890009470	TETHER	1	EA
4	868-967	BASE	1	EA
3	908-067	MB STUD	4	EA
2	908-068	M10 STUD	1	EA
1	883-094	BOTTOM CAP	2	EA
NO	COMPONENT NO	DESCRIPTION	QTY/M	U/M

BILL OF MATERIAL

UNLESS OTHERWISE SPECIFIED, DIMENSIONS ARE IN MILLIMETERS.	
DIMENSIONS IN BRACKETS ( ) ARE INCHES.	
UNLESS OTHERWISE SPECIFIED, DIMENSIONS DO NOT INCLUDE PLATING.	
⊙	DENOTES CRITICAL CHARACTERISTICS.
CPK	DENOTES CPK DIMENSIONS, -MINIMUM CPK VALUE
ST	DENOTES A CHARACTERISTIC THAT PROVIDES AN INDICATION OF PROCESS PERFORMANCE. PROCEDURE FOR MEASUREMENT AND TRACKING TO BE DEFINED IN LITTELFUSE INSPECTION INSTRUCTIONS
CP	DENOTES CP DIMENSIONS, -MINIMUM CP VALUE MUST BE WITHIN THE DIMENSIONAL LIMITATIONS SHOWN ON DRAWING AND INITIALLY LOCATED TO ALLOW FOR MAXIMUM TOOL LIFE
COPIES TO	MATL SPEC SEE NOTE
1 9 18	FINISH SEE NOTE
2 10 19	
3 12 20	
4 13 21	DRW FYUE DATE 26/Jun/18 SCALE 1:1
5 14 23	CHK DATE SUPER DR
6 15 33	APPD DATE FINSH GOOD WT
7 16 43	
8 17 53	
TOLERANCES UNLESS OTHERWISE SPECIFIED (REF. ISO 2768-PT1)	
DIMENSION	0,5 - 3 3 - 6 6 - 30 30 - 120 120 - 400
TOLERANCE	+0,1 +0,1 +0,2 +0,3 +0,5
1ST ANGLE PROJECTION	
TITLE	UNSEALED 4-WAY ZCASE FUSE BOX
METRIC ASSEMBLY	Littelfuse REVISION DRWG. NO. OUTLINE OFHZ0002Z DES PLAINES, ILLINOIS 60544

CAD GENERATED DRAWING - NO PENCIL CHANGES ALLOWED