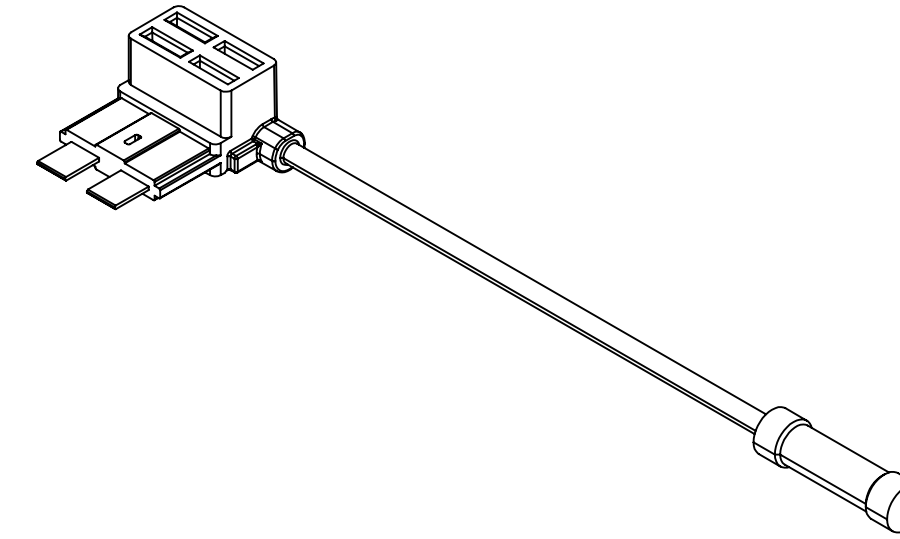
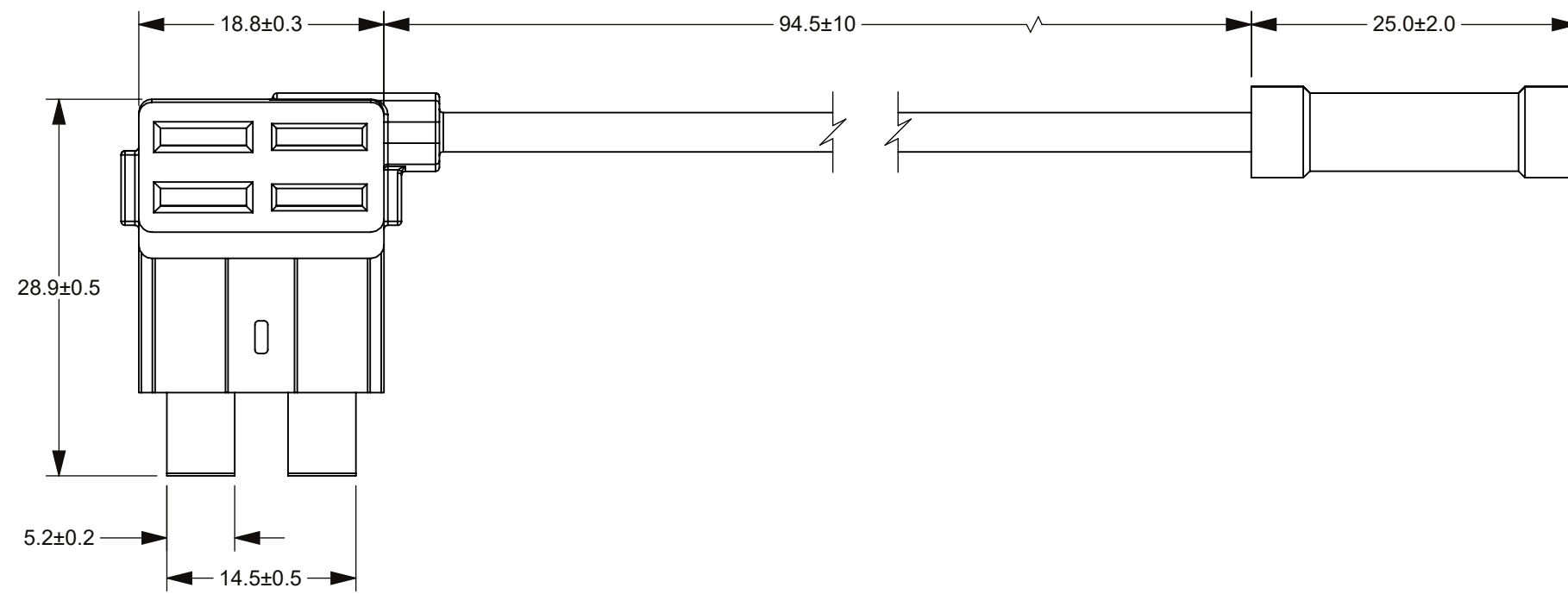
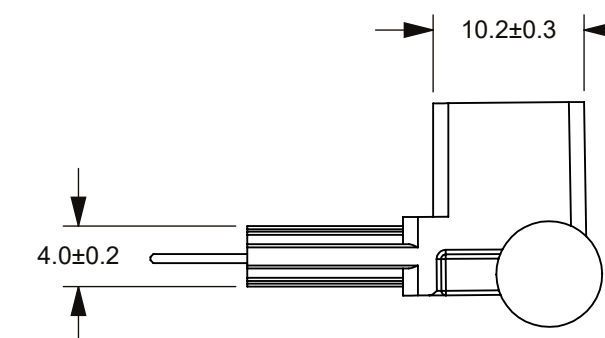
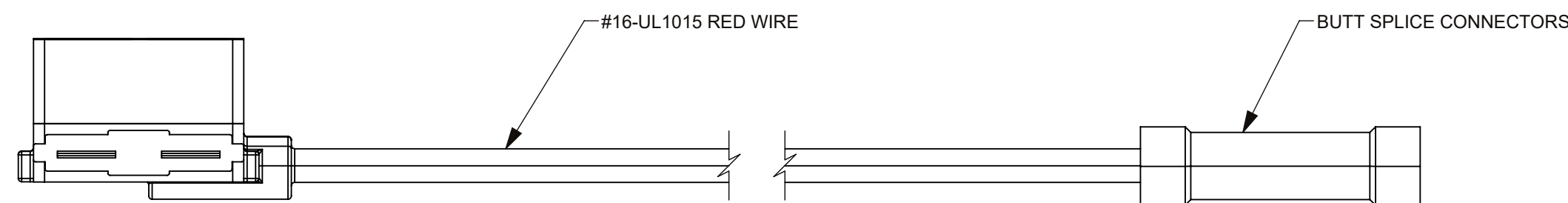


THIS DRAWING AND THE INFORMATION CONTAINED WITHIN IT ARE CONFIDENTIAL AND MAY NOT BE COPIED OR DISCLOSED WITHOUT THE WRITTEN PERMISSION OF LITTELFUSE.

| REVISIONS | | | | |
|-----------|------|---------------------------------------|----------|-------------|
| ZONE | REV. | DESCRIPTION | DATE | APPROVED |
| | A | PCO #5300031. INITIAL RELEASE. DSILVA | 3/7/2022 | S. CASTILLO |



3D MODEL VIEW
SCALE 1:1



NOTES:

1. MAX. INSTALLATION RATING UP TO 10 AMPS.
2. MAX. VOLTAGE RATING 32V.
3. MAX. FUSE INSERTION FORCE TO BE 10KGF.

| NO. | COMPONENT NO. | COMPONENT NAME | QTY | U |
|---|---------------|---|--|----------------|
| TOLERANCES UNLESS OTHERWISE SPECIFIED (REF. ISO 2768-mK) | | | | |
| .5 to 3 | >3 to 6 | >6 to 30 | >30 to 120 | >120 to 400 |
| | | | | ANGLE |
| +0.10 | +0.10 | +0.20 | +0.30 | +0.50 |
| | | | | NONE |
| DIMENSIONS ARE SHOWN IN MILLIMETERS. DIMENSIONS AND TOLERANCES ARE DEFINED ACCORDING TO ANSI/ASME Y14.5-1994. | | | | |
| PER CHNFPD20-008 PROCEDURE | ● | FIT/ FUNCTION CRITICAL CHARACTERISTICS | | |
| | <S> | SAFETY/ COMPLIANCE CRITICAL CHARACTERISTICS SYMBOL | | |
| | CPK | DENOTES CPK DIMENSIONS MINIMUM CPK VALUE | | |
| | (ST) | DENOTES A CHARACTERISTIC THAT PROVIDES AN INDICATION OF PROCESS PERFORMANCE. PROCEDURE FOR MEASUREMENT AND TRACKING TO BE DEFINED IN LITTELFUSE INSPECTION INSTRUCTIONS | | |
| | CP | DENOTES CP DIMENSIONS. -MINIMUM CP VALUE MUST BE WITHIN THE DIMENSIONAL LIMITATIONS SHOWN ON DRAWING AND INITIALLY LOCATED TO ALLOW FOR MAXIMUM TOOL LIFE | | |
| DRAWN | NAME | DATE | Expertise Applied Answers Delivered | |
| CHECKED | DSILVA | 2/23/2022 | | |
| | S. CASTILLO | 3/7/2022 | | |
| FORM NO. CVP-PE40-0005 REV B | | TITLE | | |
| THIRD ANGLE PROJECTION | | ATO ADD-A-CIRCUIT | | |
| | | SIZE | DWG. NO. | REV. |
| DO NOT SCALE DRAWING | | C | OUTLINE | OL-0FHA0200Z A |
| SCALE 2:1 | | | | SHEET 1 OF 1 |