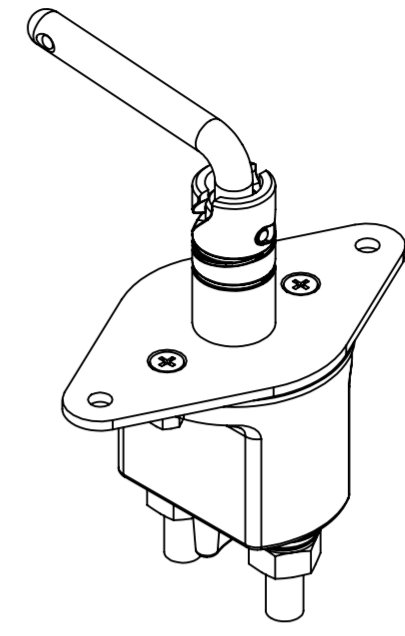
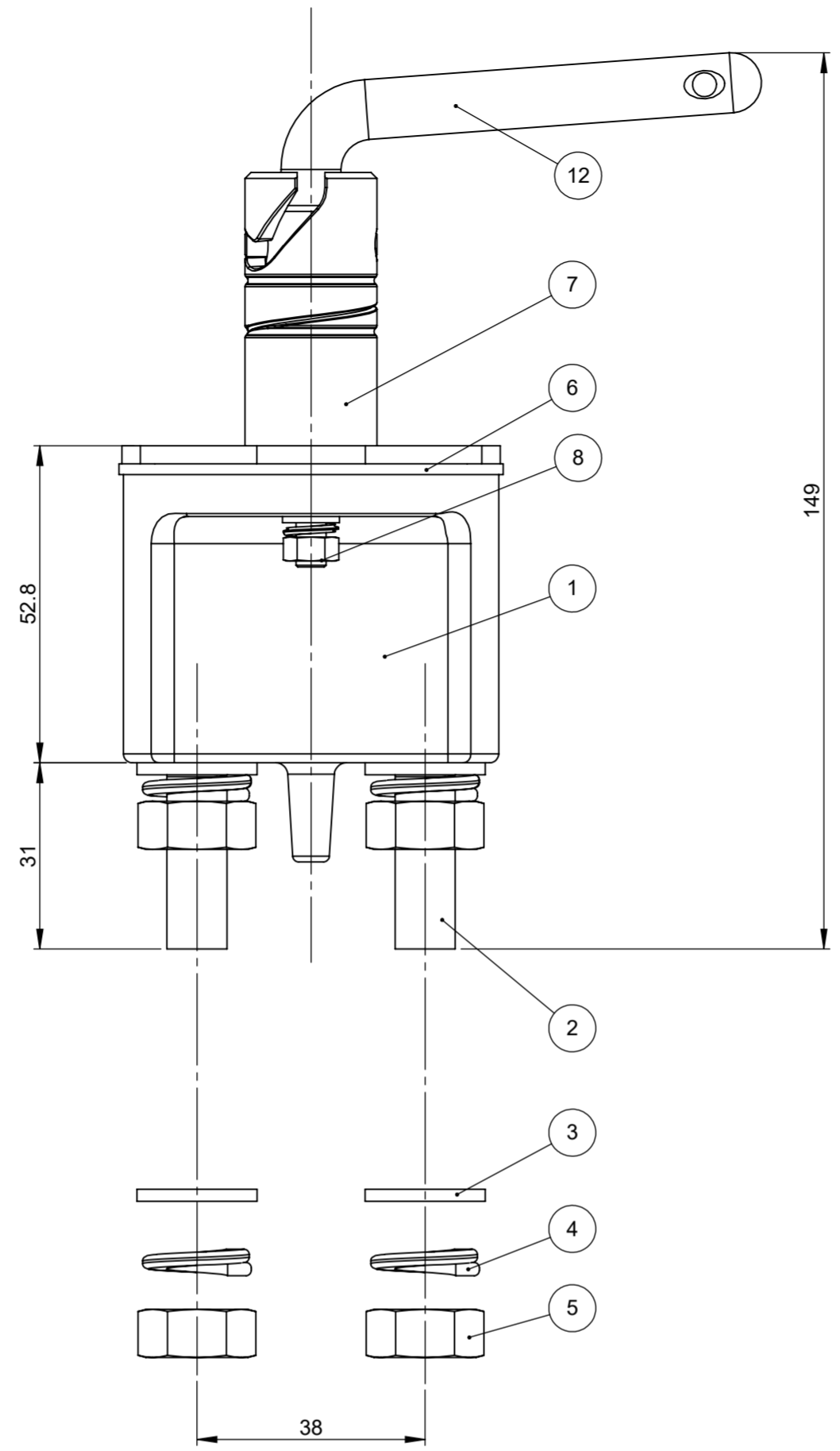
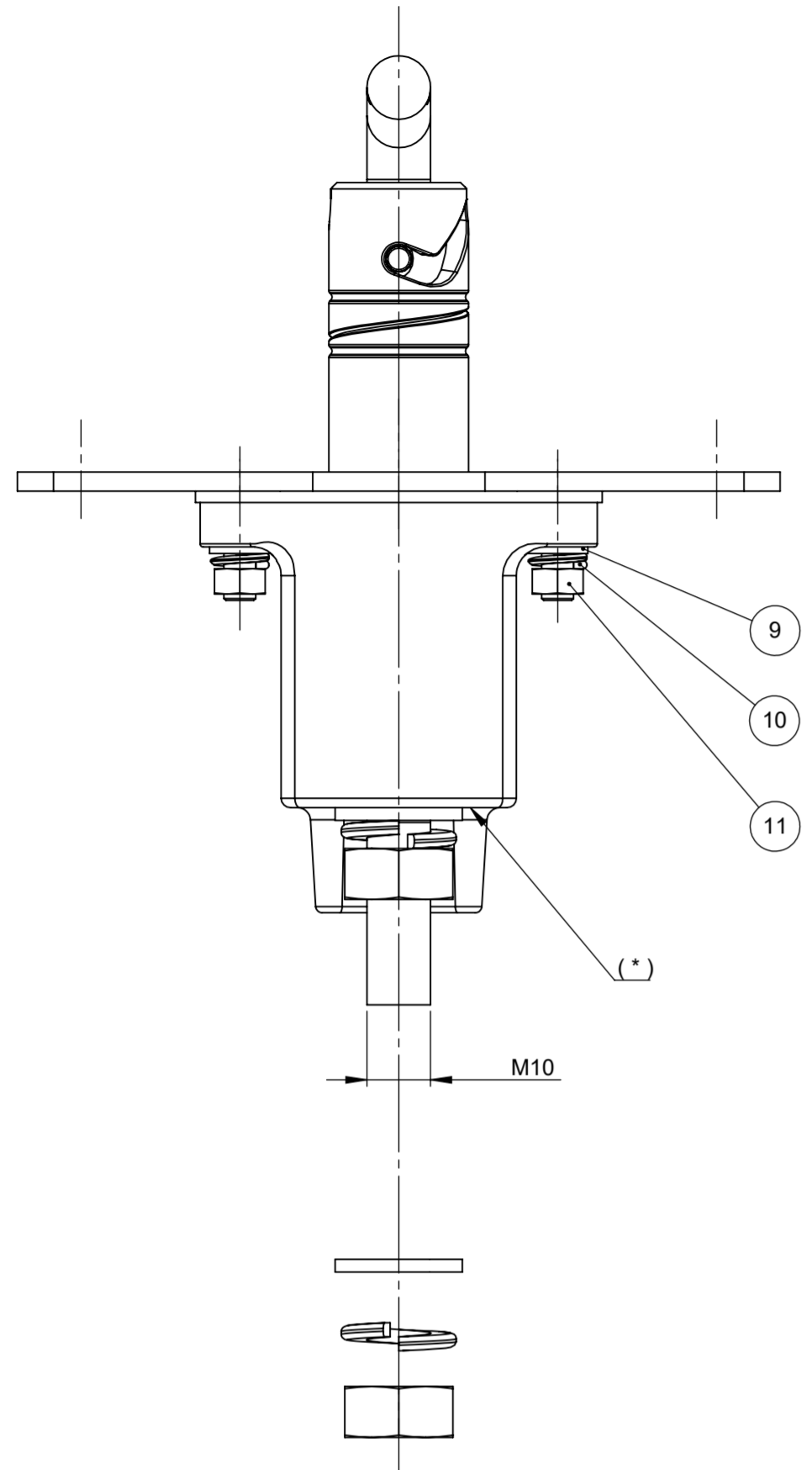


THIS DRAWING AND THE INFORMATION CONTAINED WITHIN IT ARE CONFIDENTIAL AND MAY NOT BE COPIED OR DISCLOSED WITHOUT THE WRITTEN PERMISSION OF LITTELFUSE.

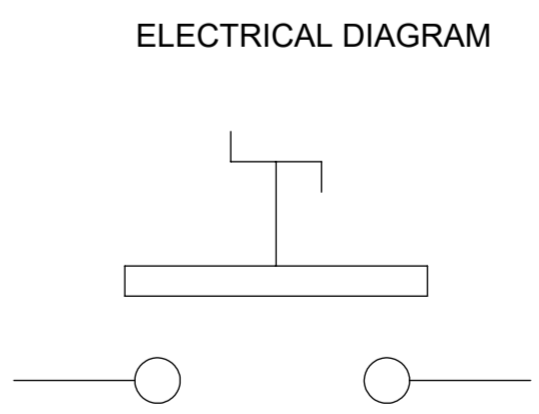
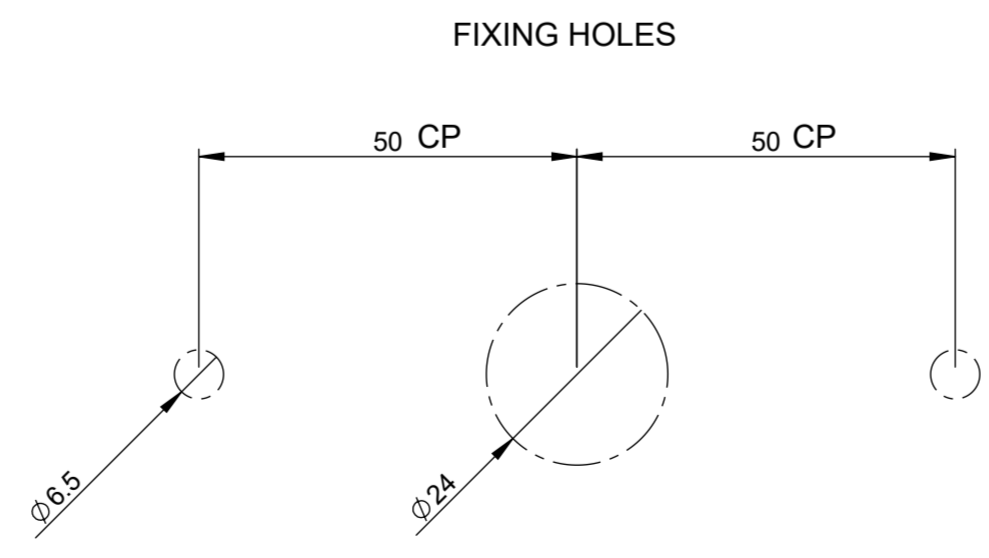
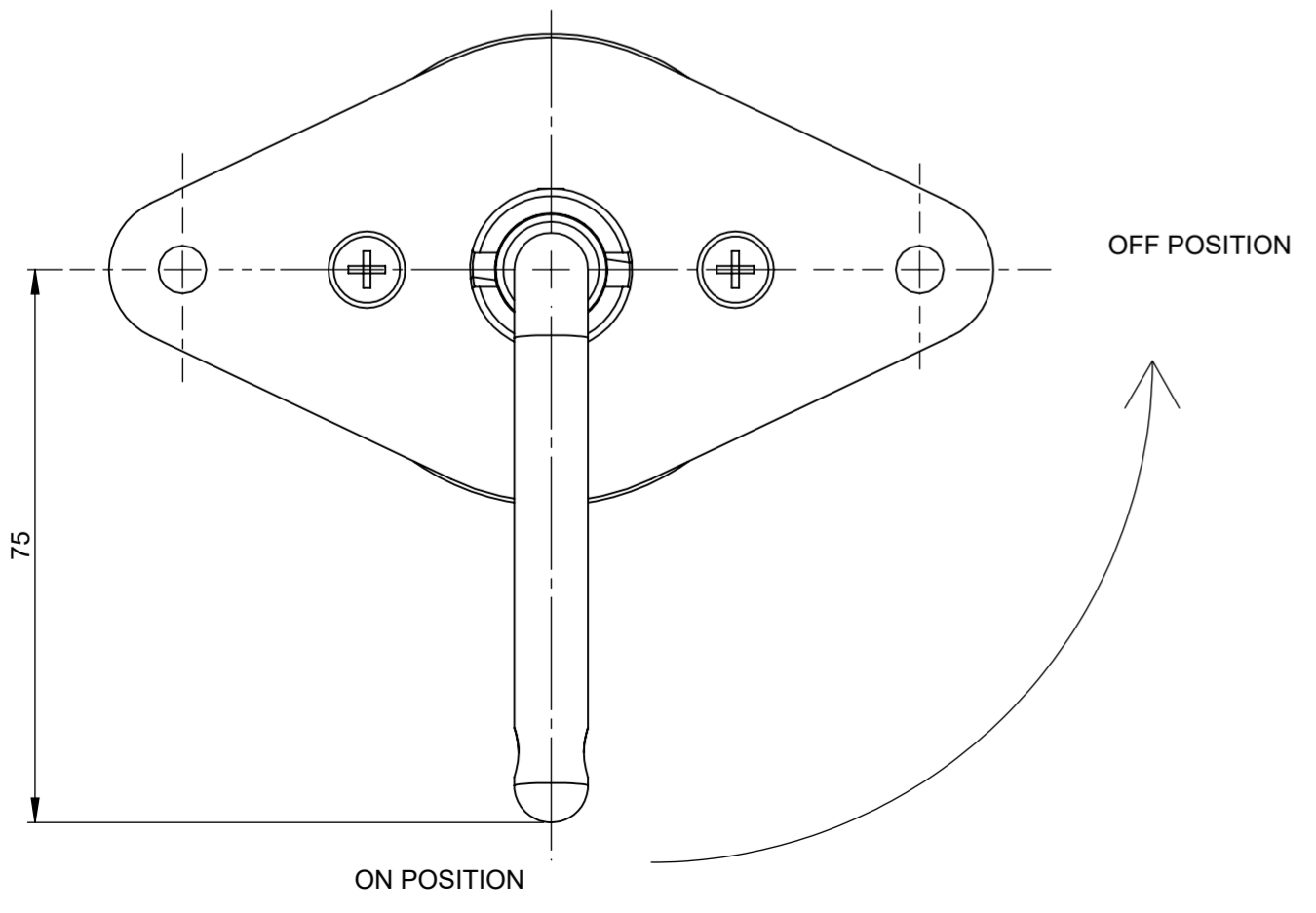
| REVISIONS | | | | |
|-----------|--------------------------------|-----------|-------------|----------|
| REV. | DESCRIPTION | DATE | DESIGNED | APPROVED |
| A | First issue of outline drawing | 27-May-20 | L.Dal Molin | M.Tinto |



SCALE 1:2

| POS. | P/N | DESCRIPTION | MATERIAL | Q.TY | U/M |
|------|----------|---------------------------------|-----------------|------|-----|
| 12 | 08099800 | Lever complete | Steel | 1 | EA |
| 11 | | Nut M5 | Steel | 2 | EA |
| 10 | | Spring washer To 5 | Steel | 2 | EA |
| 9 | | Plain washer Tc 5.3x9 | Steel | 2 | EA |
| 8 | | Screw M5x20 | Steel | 2 | EA |
| 7 | | Upper body cam | Steel | 1 | EA |
| 6 | | Gasket | Silicone rubber | 1 | EA |
| 5 | | Nut M10 | Steel | 4 | EA |
| 4 | | Spring washer To 10 | Steel | 4 | EA |
| 3 | | Washer Te 10.5x20 | Steel | 4 | EA |
| 2 | | M10 fixed contact screw | Copper | 2 | EA |
| 1 | | 2xM10 contact holder long flame | Phenolic resin | 1 | EA |

PRESCRIPTIONS
 - (*) Marking of date of manufacturing on either side
 - Nominal voltage: 14V ± 28V
 - Maximum direct current: 250A
 - Maximum short time current: 2000A for 5sec at 23°C
 - Number of electrical operations: 5000
 - Number of mechanical operations: 5000
 - Maximum torque of closing nuts M10 provided in the kit: 22 ± 1.1 Nm
 - Maximum torque of closing nuts M6: 8 ± 1 Nm
 - Torque of handle 3.5 ± 2 Nm at 23°C



SAP drawing number:
 Material and treatments:

| DIMENSIONS AND TOLERANCES IN MILLIMETERS, DEFINED ACCORDING TO ISO 1101-2017. | | | | | |
|---|---|--|-----------------------------|--------------|-------------|
| linear dimensions | | | | | |
| 0,5 | >3 | >6 | >30 | >120 | >400 |
| 3 | 6 | 120 | 400 | 1000 | >2000 |
| ±0,2 | ±0,3 | ±0,5 | ±0,8 | ±1,2 | ±2 |
| angle (for range of lengths) | | | | | |
| up to 10 | >10 | >50 | >120 | >400 | >1200 |
| ±1°30' | ±1° | ±0°30' | ±0°15' | | |
| ● | FIT/ FUNCTION CRITICAL CHARACTERISTICS SYMBOL | | | | |
| <S> | SAFETY/ COMPLIANCE CRITICAL CHARACTERISTICS SYMBOL | | | | |
| CPK | DENOTES CPK DIMENSIONS MINIMUM CPK VALUE | | | | |
| ST | DENOTES A CHARACTERISTIC THAT PROVIDES AN INDICATION OF PROCESS PERFORMANCE. PROCEDURE FOR MEASUREMENT AND TRACKING TO BE DEFINED IN LITTELFUSE INSPECTION INSTRUCTIONS | | | | |
| CP | DENOTES CP DIMENSIONS. MINIMUM CP VALUE MUST BE WITHIN THE DIMENSIONAL LIMITATIONS SHOWN ON DRAWING AND INITIALLY LOCATED TO ALLOW FOR MAXIMUM TOOL LIFE | | | | |
| NAME | DATE | Expertise Applied Answers Delivered | | | |
| DRAWN | L. Dal Molin 08-Apr-19 | | | | |
| CHECKED | - | | | | |
| - | - | | | | |
| FORM NO. | CVP-PE40-0013 REV A | TITLE | MANUAL MAIN SWITCH IGC/250F | | |
| FIRST ANGLE PROJECTION | | SIZE: | A2 | DWG. NO. | OL-08098800 |
| DO NOT SCALE DRAWING | SCALE 1:1 | OUTLINE REV. | A | SHEET 1 OF 1 | |