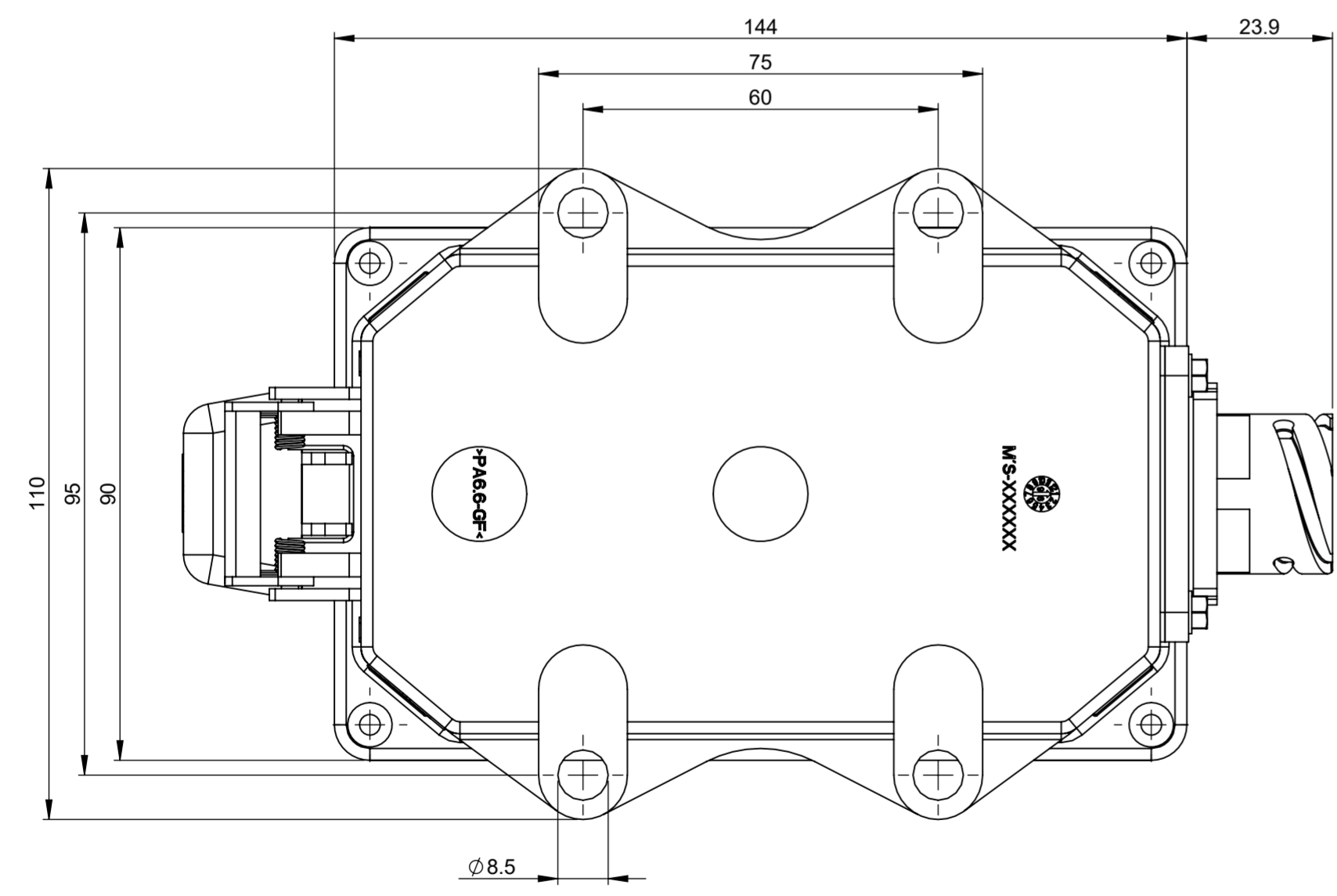
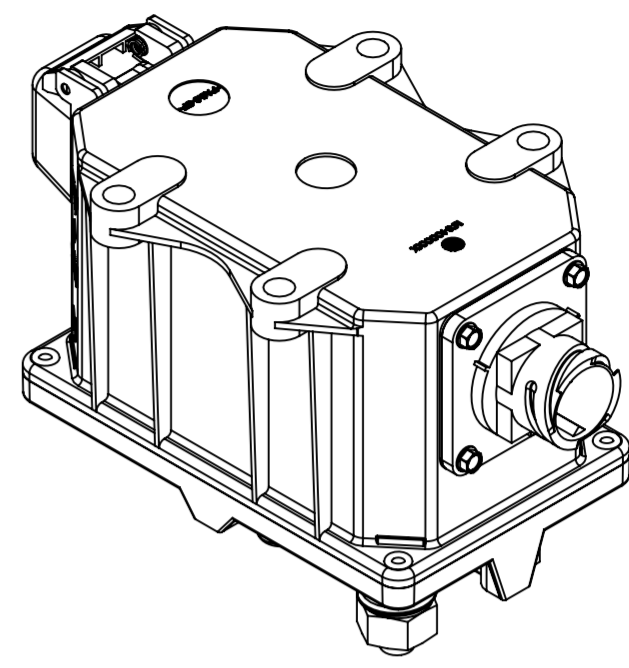
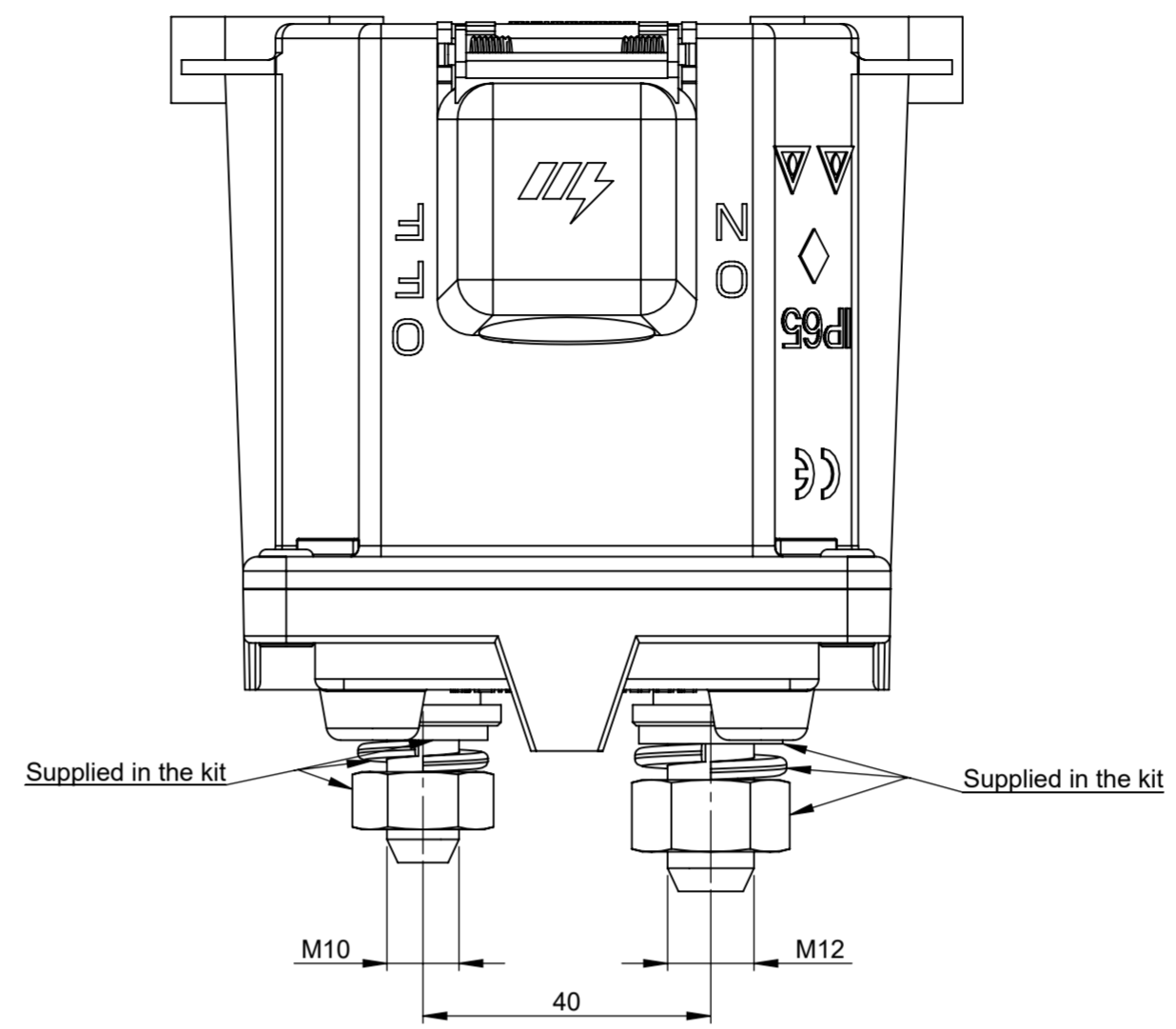
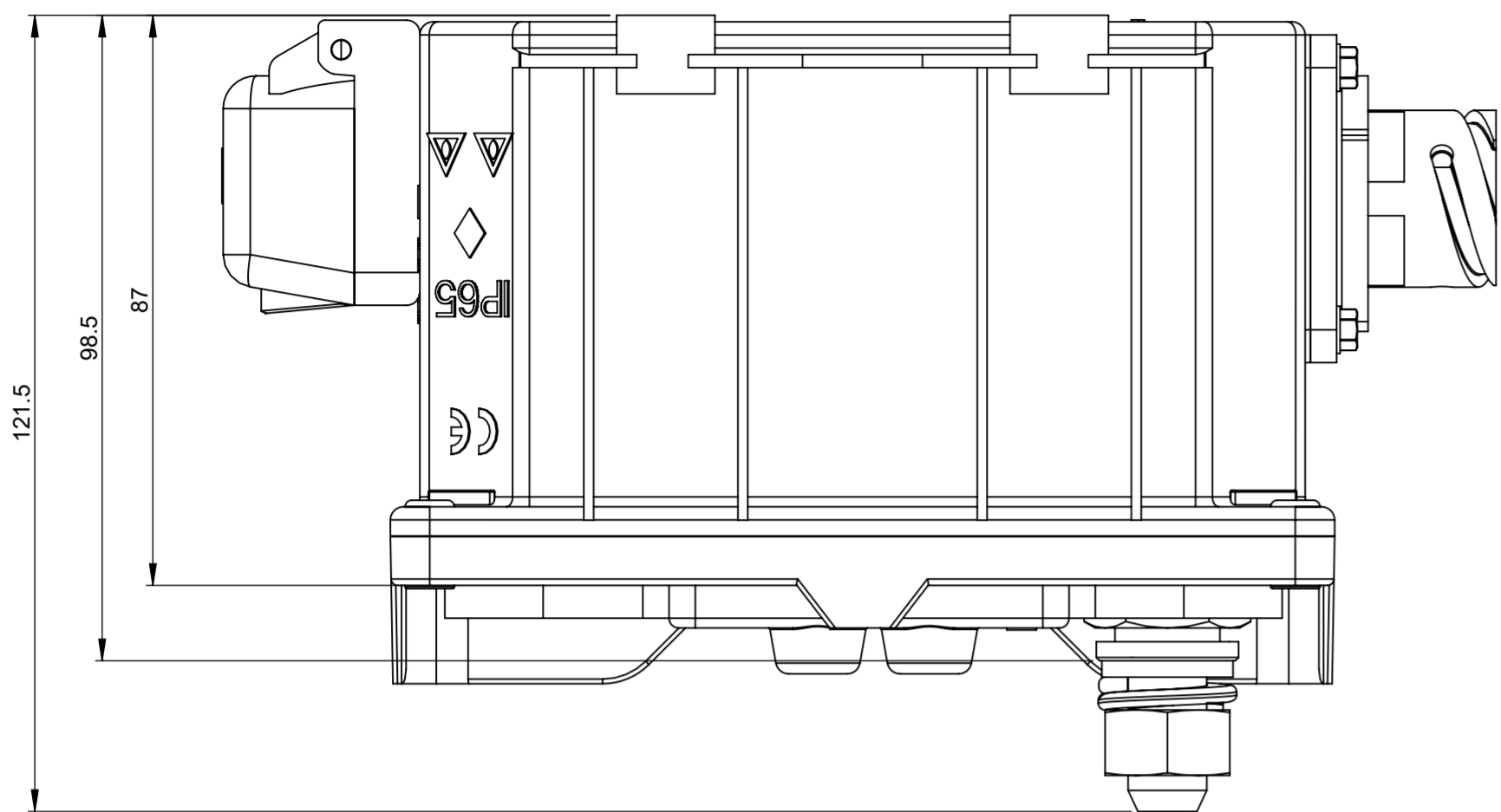
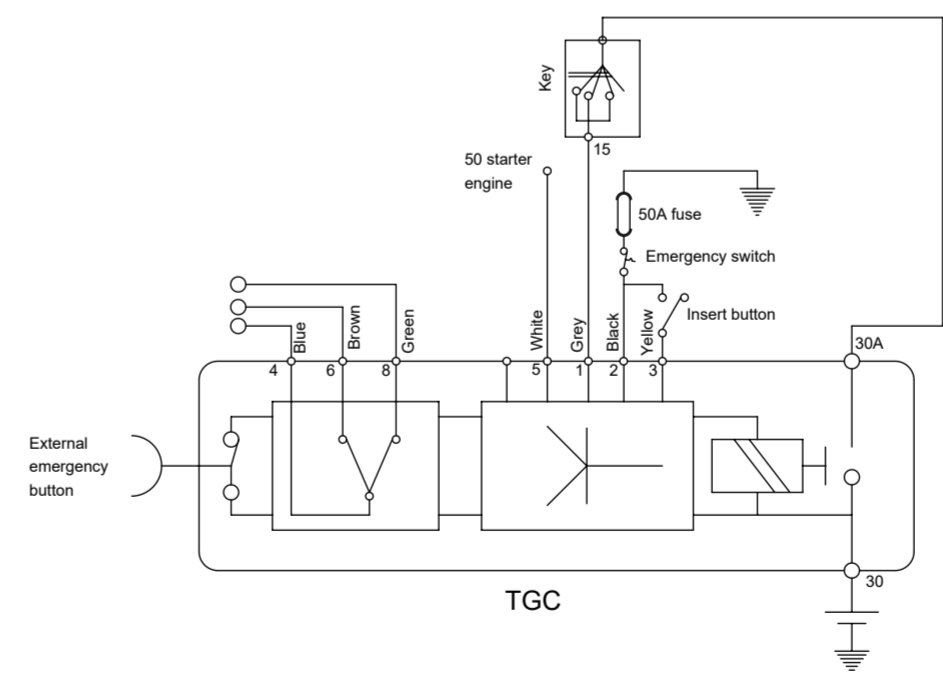


THIS DRAWING AND THE INFORMATION CONTAINED WITHIN IT ARE CONFIDENTIAL AND MAY NOT BE COPIED OR DISCLOSED WITHOUT THE WRITTEN PERMISSION OF LITTELFUSE.

REV.	DESCRIPTION	DATE	GCF / ECR	DESIGNED	APPROVED
A	Initial Release	2 Aug 2022		L.Dal Molin	M.Tinto



ELECTRICAL DIAGRAM



REFERENCES 8 PIN SOCKET

Socket references	Function
1	15
2	Emergency negative
3	Insertion
4	Aux common
5	50
6	NC Aux
7	Not collacted
8	NO Aux

DIMENSIONS AND TOLERANCES IN MILLIMETERS, DEFINED ACCORDING TO ISO 1101-2017.

linear dimensions						
0,5	>3	>6	>30	>120	>400	>1000
3	6	30	120	400	1000	2000
±0,2	±0,3	±0,5	±0,8	±1,2	±2	±3

angle (for range of lengths)			
up to 10	>10	>50	>120
±1°30'	±1°	±0°30'	±0°15'

●	FIT/ FUNCTION CRITICAL CHARACTERISTICS SYMBOL										
<S>	SAFETY/ COMPLIANCE CRITICAL CHARACTERISTICS SYMBOL										
CPK	DENOTES CPK DIMENSIONS MINIMUM CPK VALUE										
ST	DENOTES A CHARACTERISTIC THAT PROVIDES AN INDICATION OF PROCESS PERFORMANCE. PROCEDURE FOR MEASUREMENT AND TRACKING TO BE DEFINED IN LITTELFUSE INSPECTION INSTRUCTIONS										
CP	DENOTES CP DIMENSIONS. MINIMUM CP VALUE MUST BE WITHIN THE DIMENSIONAL LIMITATIONS SHOWN ON DRAWING AND INITIALLY LOCATED TO ALLOW FOR MAXIMUM TOOL LIFE										
<table border="1"> <thead> <tr> <th>NAME</th> <th>DATE</th> </tr> </thead> <tbody> <tr> <td>DRAWN: L. Dal Molin</td> <td>2 Aug 2022</td> </tr> <tr> <td>CHECKED: -</td> <td>-</td> </tr> <tr> <td>-</td> <td>-</td> </tr> <tr> <td>-</td> <td>-</td> </tr> </tbody> </table>		NAME	DATE	DRAWN: L. Dal Molin	2 Aug 2022	CHECKED: -	-	-	-	-	-
NAME	DATE										
DRAWN: L. Dal Molin	2 Aug 2022										
CHECKED: -	-										
-	-										
-	-										
<p>Expertise Applied Answers Delivered</p>											
TITLE ELECTRICAL BMS TGC/DE-I 24V(+)											
FORM NO: CVP-PE40-0013 REV A	SCALE: A2										
FIRST ANGLE PROJECTION	DWG. NO. OL-08096562										
DO NOT SCALE DRAWING	SCALE 1:1										
	SHEET 1 OF 1										

DOCUMENTO CORRELATO AL CERTIFICATO
INERIS 03ATEX0202
 Non sono ammesse modifiche senza l' approvazione della "Persona Autorizzata".

- PRESCRIPTIONS**
- Tightening torque of M12 nut: 22 ± 1 Nm
 - Tightening torque of M10 nut: 22 ± 1 Nm
 - Work environment 4: according to Iveco Std. 18-2252
 - Fix the device to the structure by the M8 screws and plane washer with a torque of 10 ± 2 Nm.

- CHARACTERISTICS**
- Nominal voltage: 12 - 24V
 - Maximum continuous current: 250A
 - Maximum short time current: 2000A for 30 sec.
 - Number of mechanical and electrical cycles: 100.000