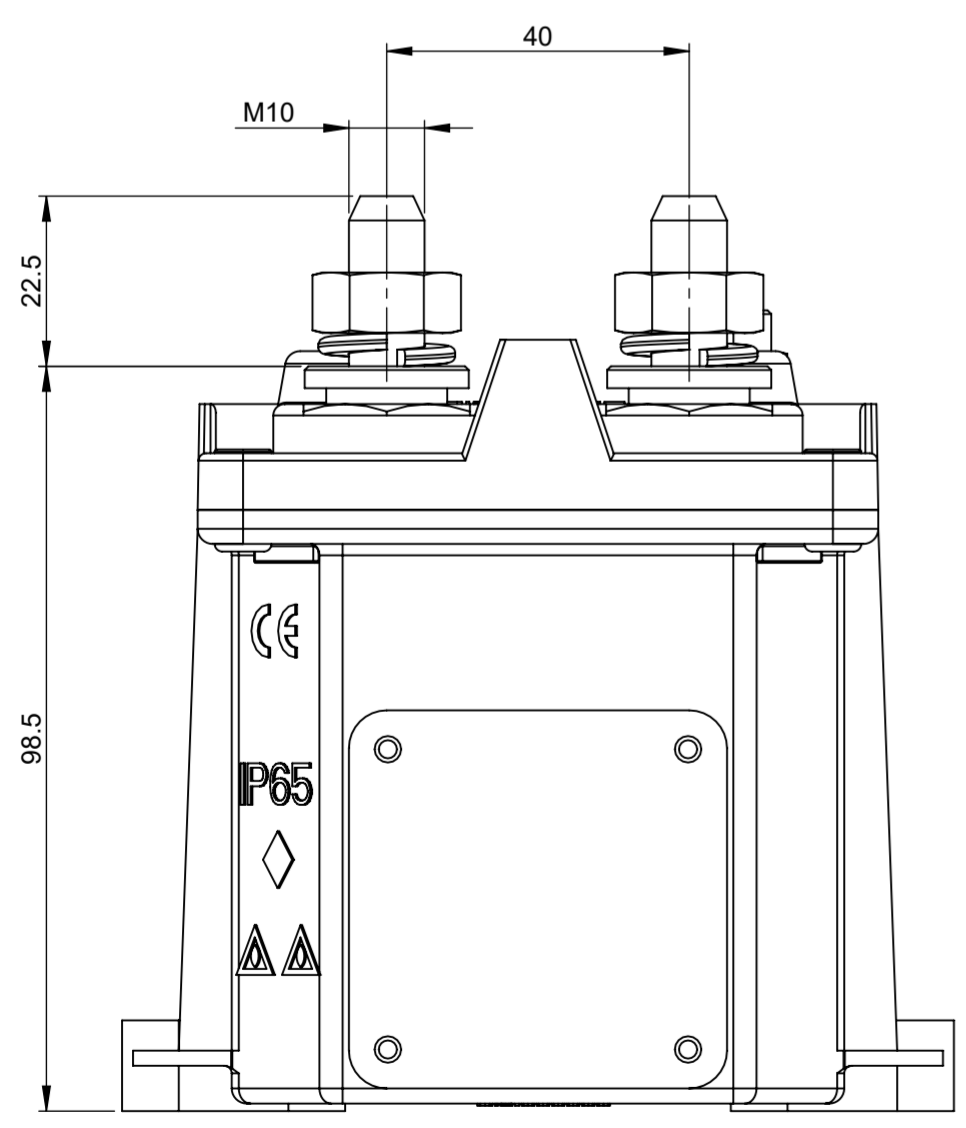
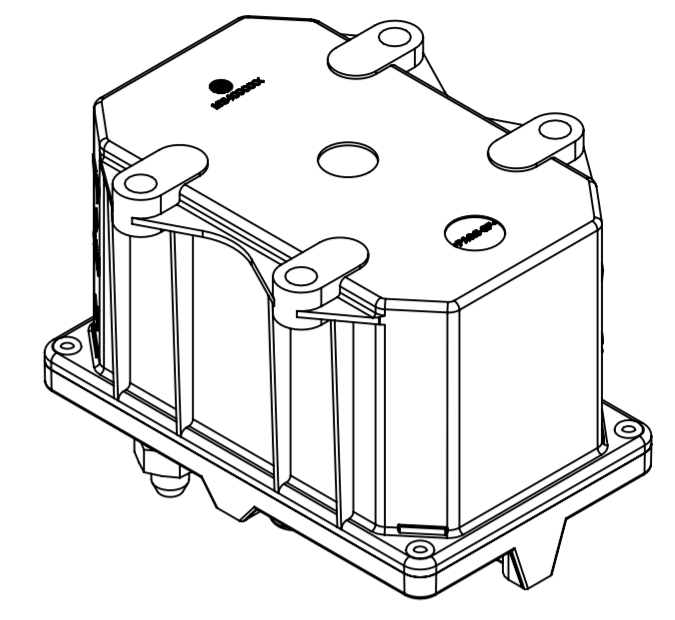
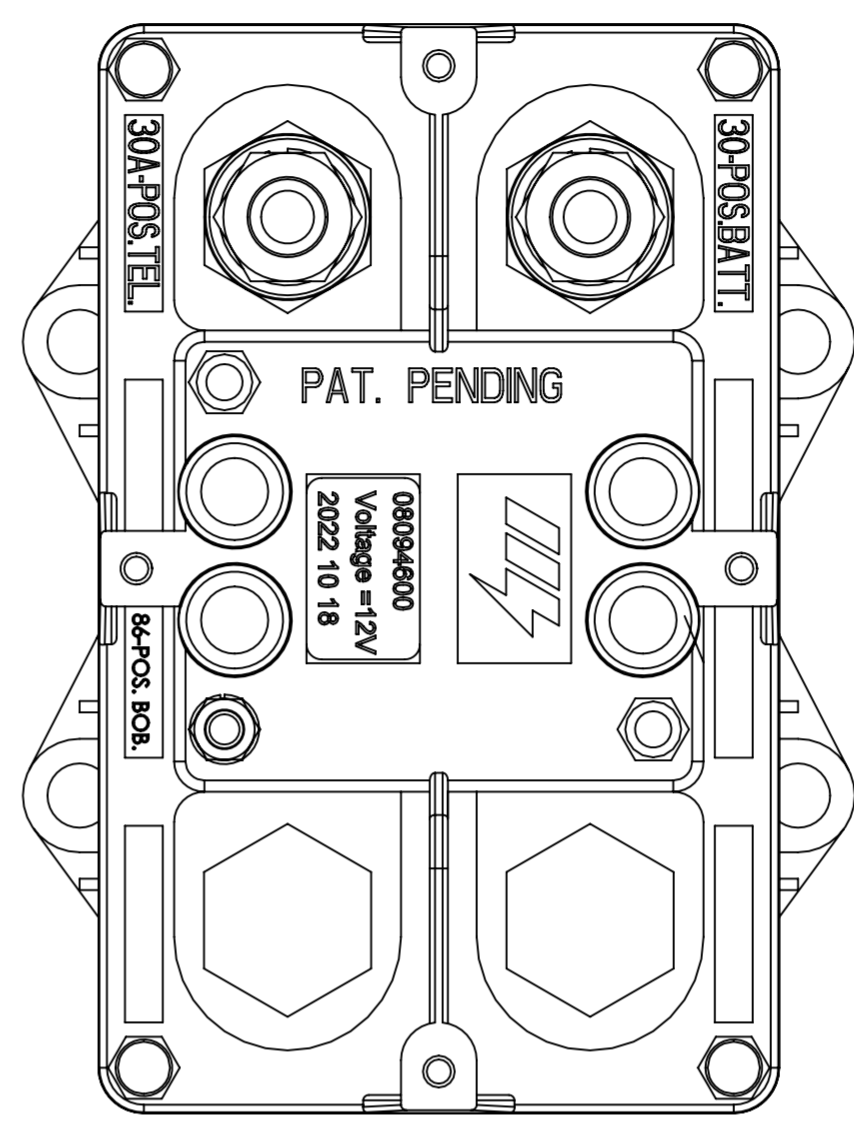
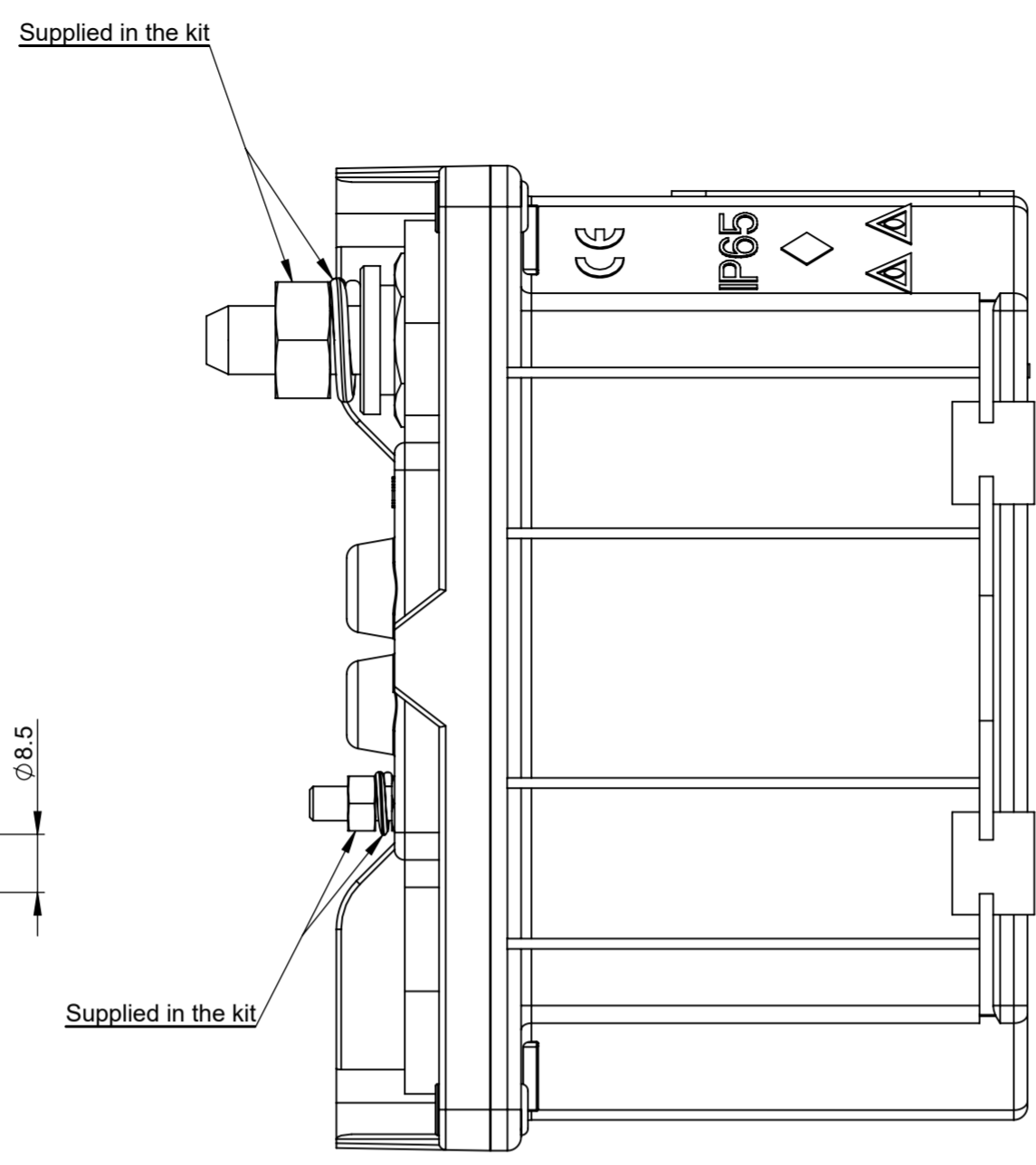
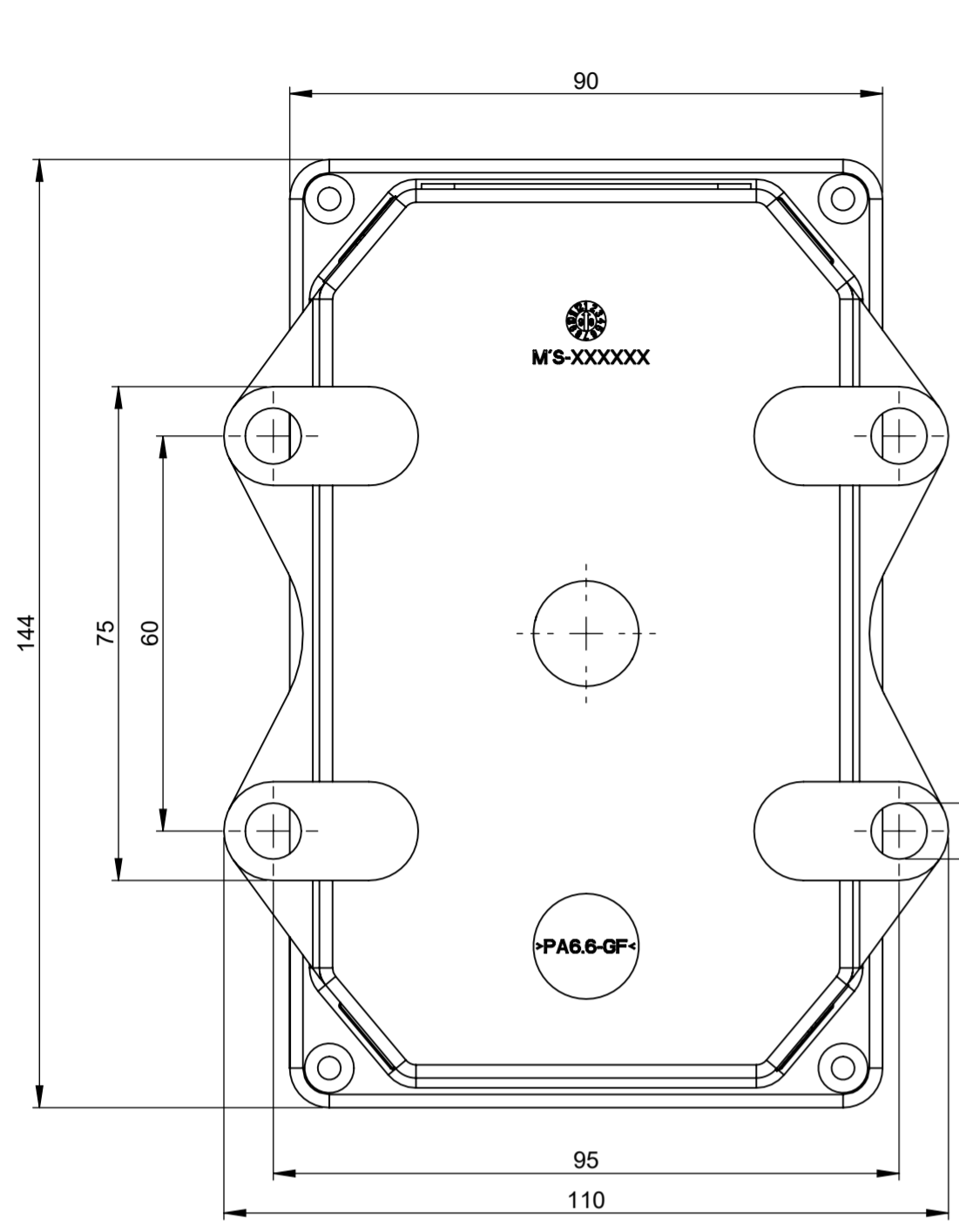
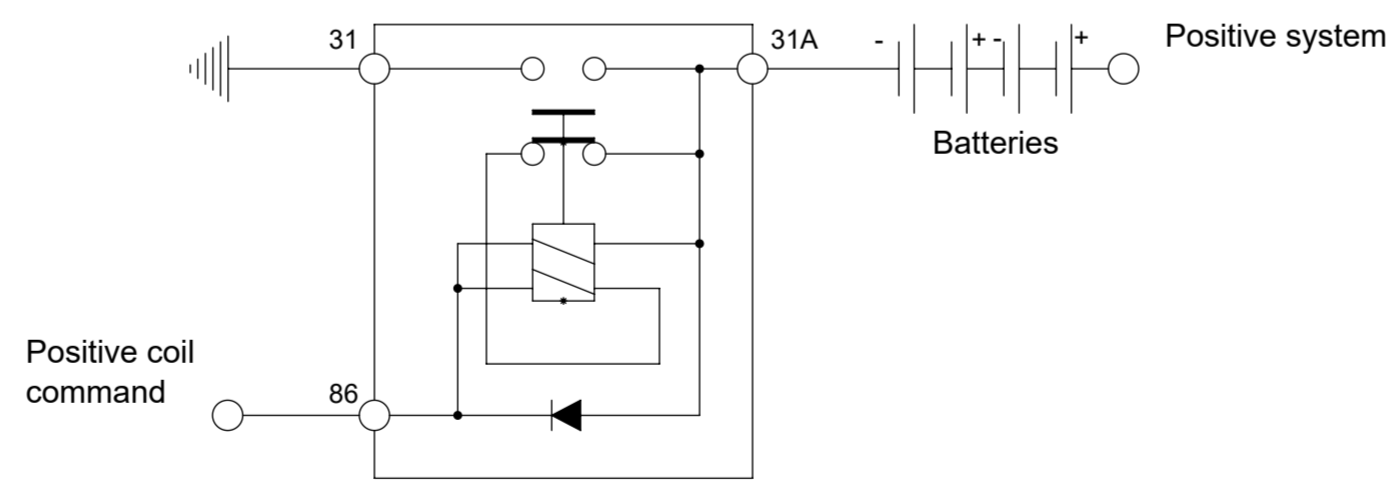


THIS DRAWING AND THE INFORMATION CONTAINED WITHIN IT ARE CONFIDENTIAL AND MAY NOT BE COPIED OR DISCLOSED WITHOUT THE WRITTEN PERMISSION OF LITTELFUSE.

REV.		DESCRIPTION	REVISIONS			
REV.	DESCRIPTION	DATE	GCF / ECR	DESIGNED	APPROVED	
A	Initial Release	18-Oct-22		L.Dal Molin	M.Tinto	



Electrical Diagram



- CHARACTERISTICS**
- Nominal tension: 12V
  - Maximum continuous current: 250A
  - Maximum current: 2000A for 30 sec.
  - Number of mechanical and electrical cycles: 100.000
  - Tightening torque M10 nuts: 20 Nm max
  - Tightening torque M5 nuts: 1.6 ± 0.4 Nm
  - Fix the device to the structure by the M8 screws and plane washer with a torque of 10 ± 2 Nm.

DIMENSIONS AND TOLERANCES IN MILLIMETERS, DEFINED ACCORDING TO ISO 1101-2017.							
<b>linear dimensions</b>							
0,5 3	>3 6	>6 30	>30 120	>120 400	>400 1000	>1000 2000	
±0,2	±0,3	±0,5	±0,8	±1,2	±2	±3	
<b>angle (for range of lengths)</b>							
up to 10	>10 50	>50 120	>120 400	>400 1000	>1000 2000	>2000	
±1°30'	±1°	±0°30'	±0°15'	±0°15'	±0°15'	±0°15'	
●	FIT/ FUNCTION CRITICAL CHARACTERISTICS SYMBOL						
<S>	SAFETY/ COMPLIANCE CRITICAL CHARACTERISTICS SYMBOL						
CPK	DENOTES CPK DIMENSIONS MINIMUM CPK VALUE						
ST	DENOTES A CHARACTERISTIC THAT PROVIDES AN INDICATION OF PROCESS PERFORMANCE. PROCEDURE FOR MEASUREMENT AND TRACKING TO BE DEFINED IN LITTELFUSE INSPECTION INSTRUCTIONS						
CP	DENOTES CP DIMENSIONS. MINIMUM CP VALUE MUST BE WITHIN THE DIMENSIONAL LIMITATIONS SHOWN ON DRAWING AND INITIALLY LOCATED TO ALLOW FOR MAXIMUM TOOL LIFE						
NAME	DATE	 <b>Expertise Applied   Answers Delivered</b>					
DRAWN	L. Dal Molin 1 Sep 2022						
CHECKED	-						
TITLE	ELECTRICAL BMS TGC 12V(-)						
FORM NO.	CVP-PE40-0013 REV A	SIZE:	A2	DWG. NO.	OL-08094600	REV.	A
FIRST ANGLE PROJECTION	SCALE 1:1	DO NOT SCALE DRAWING		SHEET 1 OF 1			