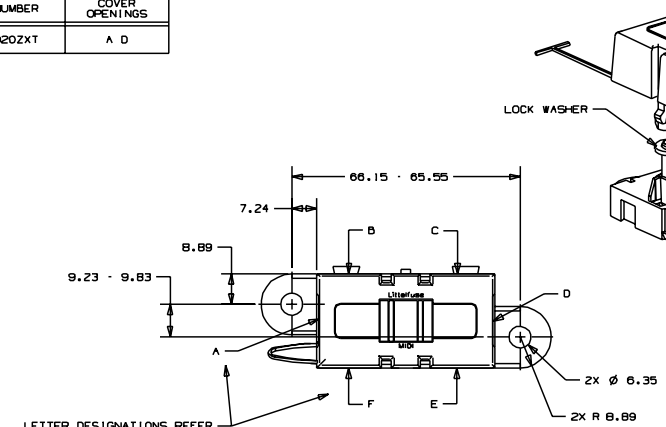
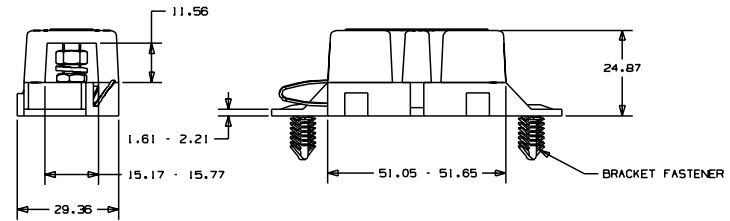


CAD GENERATED DRAWING - NO PENCIL CHANGES ALLOWED

PART NUMBER	COVER OPENINGS
04980920ZXT	A D



LETTER DESIGNATIONS REFER TO POSITIONS OF AVAILABLE COVER OPENINGS. (SEE CHART)



- NOTES:
1. TAB COVER TIE IS INSERTED INTO HOLE IN BASE.
 2. TORQUE REQUIRED FOR HEX NUT TO BE 4.0 - 5.0 NEWTON METERS (35-44 IN-LBS).

METRIC ASSEMBLY

UNLESS OTHERWISE SPECIFIED, DIMENSIONS ARE IN MILLIMETERS. DIMENSIONS IN BRACKETS [] ARE IN INCHES.

CPK DEMOTES CRITICAL CHARACTERISTICS.

CP DEMOTES CP DIMENSIONS. - MINIMUM CP VALUE

SEMOTES X CHARACTERISTIC THAT PROVIDES AN INDICATION OF PROCESS PERFORMANCE. PROCEDURE FOR MEASUREMENT OF SEM CHARACTERISTICS IS PROVIDED IN THE LITELIFE INSPECTION INSTRUCTIONS.

SEMOTES CP DIMENSIONS. - MINIMUM CP VALUE MUST BE WITHIN THE DIMENSIONAL LIMITATIONS SPECIFIED IN THE LITELIFE INSPECTION INSTRUCTIONS TO ALLOW FOR MAXIMUM TOOL LIFE.

NO	COMPONENT NO	DESCRIPTION	QTY/M	L/M
BILL OF MATERIAL				
COPIES TO				
1	9	FINISH		
2	10	19		
3	12	20		
4	13	21	DATE 01/12/10	SCALE 1:1
5	14	22	DATE 01/12/10	SUPER DR
6	15	23	DATE	FINISH GOOD W/T
7	16	43	DATE	TRANSPIRE
8	17	53	DATE	
TOLERANCES UNLESS OTHERWISE SPECIFIED (REF. ISO 2768-mS)				
DIMENSION 0.5 - 3" ±0.1				
DIMENSION 3" - 6" ±0.2				
DIMENSION 6" - 30" ±0.3				
DIMENSION 30" - 400" ±0.5				
TITLE HOLDER - M101				
REVISION DWG. NO. A OL-04980920ZXT				
LTR	DATE	REVISION	CHK	APD
A	01/12/10	SAT3-RELEASE GMB		