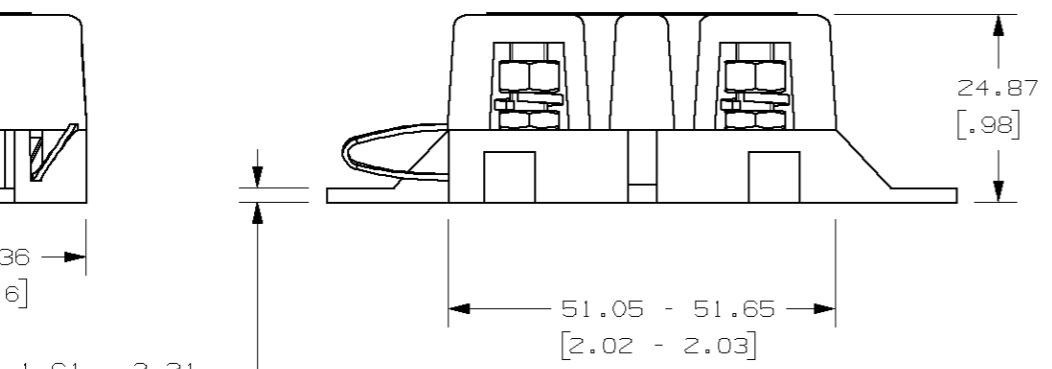
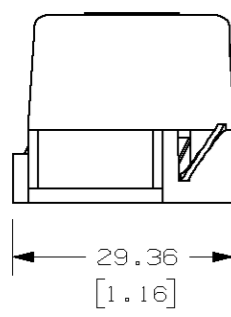
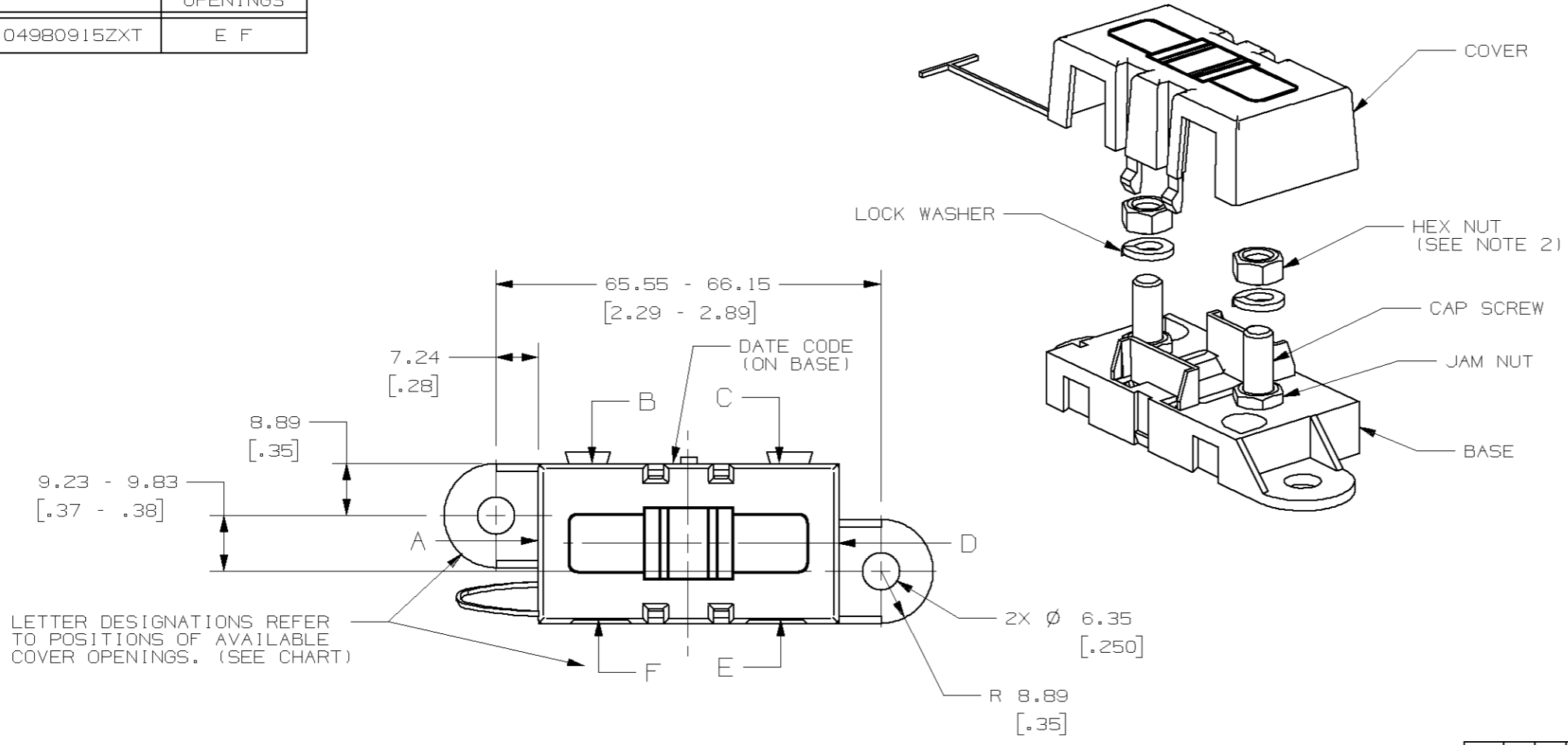


PART NUMBER	COVER OPENINGS
04980915ZXT	E F



- NOTES:**
- TAB OF COVER TIE IS INSERTED INTO HOLE IN BASE.
  - TORQUE REQUIRED FOR HEX NUT TO BE 4.0 - 5.0 NEWTON METERS (35-44 IN-LBS).
  - CAP SCREW AND NUTS - M5 X 0.8 - AND WASHERS, STEEL, ZINC PLATE WITH TRIVALENT CHROMATE, LEACHED AND SEALED, INTEGRAL TORQUE CONTROL LUBRICANT FINISH. (MEETS 96 HR. ASTM STD. B-117 SALT SPRAY REQ.).
  - HOLDER MEETS L/F VALIDATION TEST SPEC. VS-005004.

METRIC

NO	COMPONENT NO	DESCRIPTION	QTY/M	U/M
----	--------------	-------------	-------	-----

BILL OF MATERIAL

MATL SPEC	COPIES TO	DRW	DATE	SCALE	FINISH	GRAMS/PIECE
	1	DJG	05/25/05	1:1	SUPER DR	
	2	CHK				
	3	APPD				
	4					
	5					
	6					
	7					
	8					

TOLERANCE UNLESS OTHERWISE SPECIFIED  
 ONE PLACE DEC +/- .25  
 THREE PLACE DEC +/- .100  
 TWO PLACE DEC +/- .13  
 ANGULAR +/- 1°

LTR	DATE	REVISION	CHK	APD
A	05/25/05	61735 - RELEASE DJG		
B	06/08/07	B5460D-REDRAWN IN UG, ADDED TOLERANCE TO DIMENSIONS, 7.24 WAS 8.19 GMB		

⊙	DENOTES CRITICAL CHARACTERISTICS.
CPK	DENOTES CPK DIMENSIONS, -MINIMUM CPK VALUE
ST	DENOTES A CHARACTERISTIC THAT PROVIDES AN INDICATION OF PROCESS PERFORMANCE. PROCEDURE FOR MEASUREMENT AND TRACKING TO BE DEFINED IN LITTELFUSE INSPECTION INSTRUCTIONS
CP	DENOTES CP DIMENSIONS, -MINIMUM CP VALUE MUST BE WITHIN THE DIMENSIONAL LIMITATIONS SHOWN ON DRAWING AND INITIALLY LOCATED TO ALLOW FOR MAXIMUM TOOL LIFE

3RD ANGLE PROJECTION

TITLE: MIDI FUSE HOLDER

REVISION DRWG. NO. B 04980915ZXT

OUTLINE