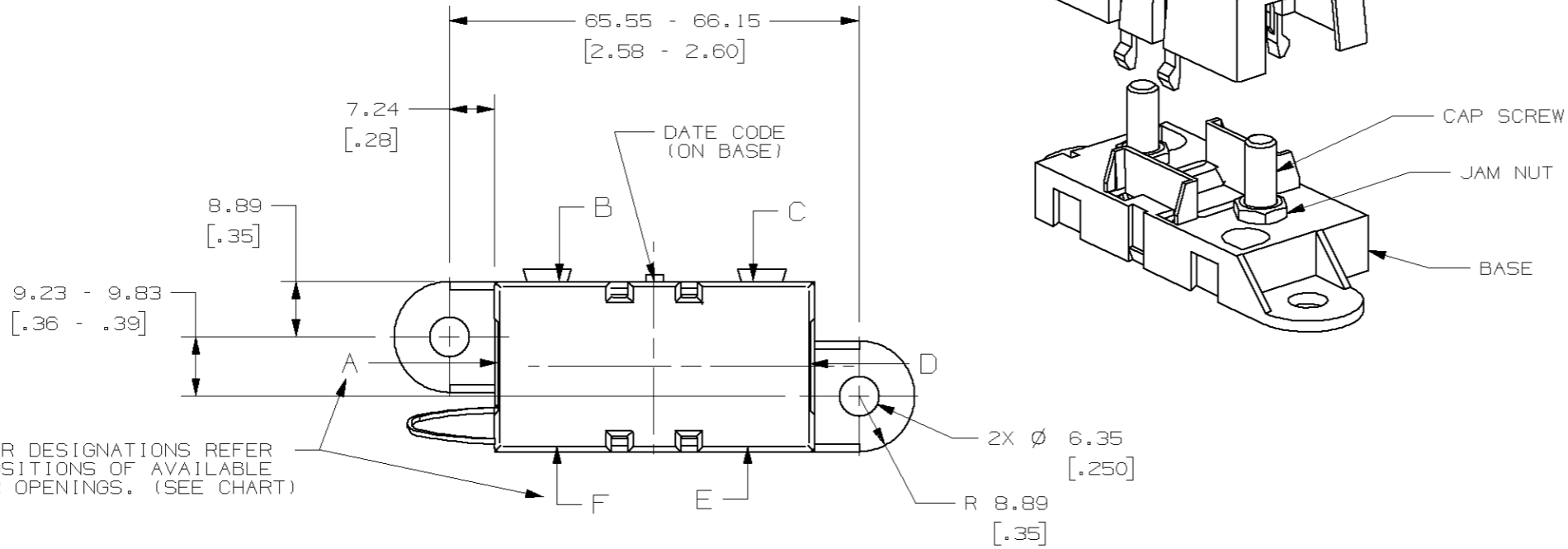
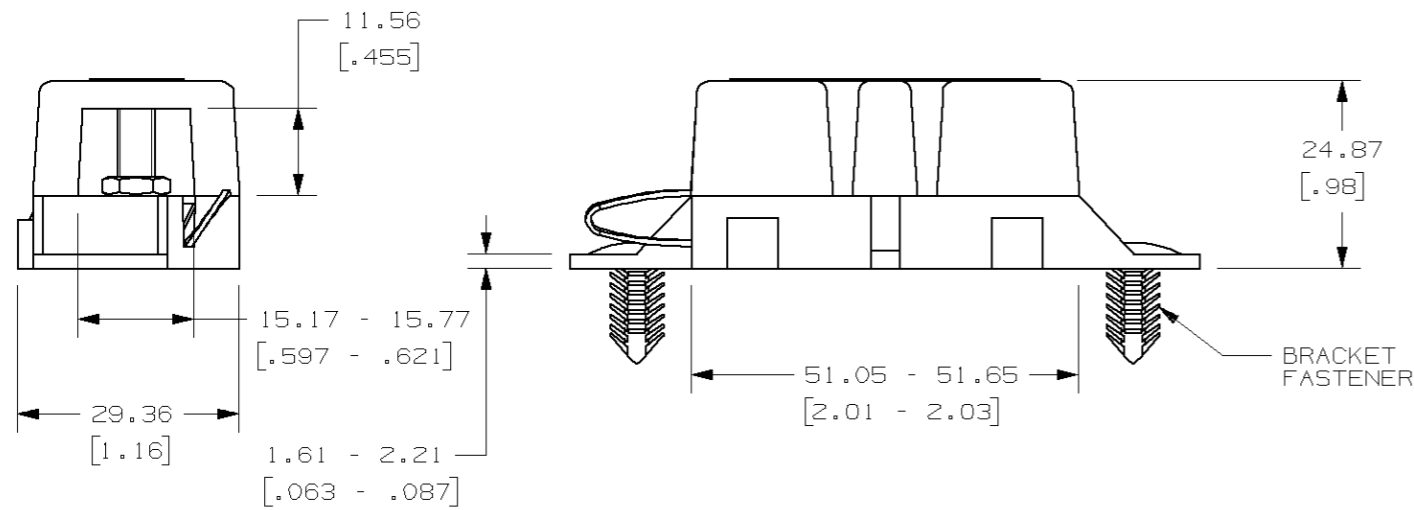


| | |
|-------------|----------------|
| PART NUMBER | COVER OPENINGS |
| 04980913ZXT | A D |

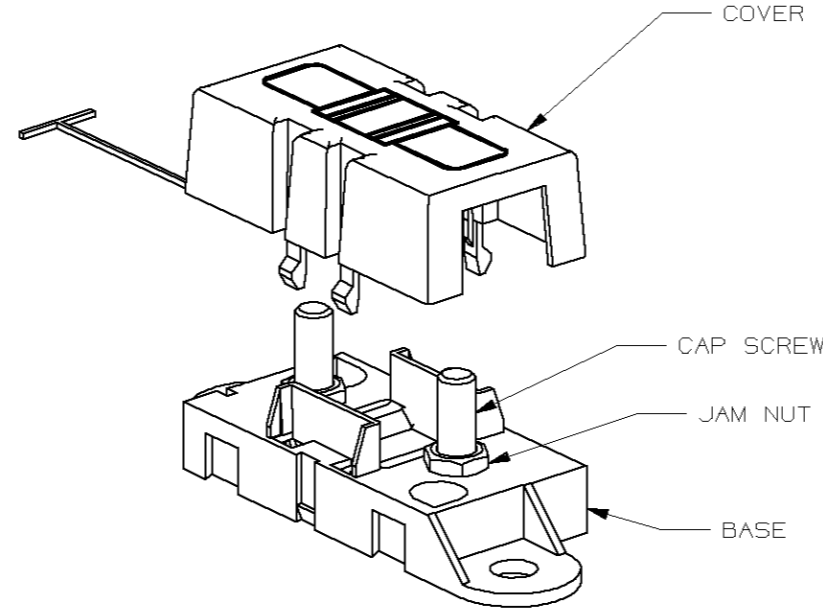


LETTER DESIGNATIONS REFER TO POSITIONS OF AVAILABLE COVER OPENINGS. (SEE CHART)



NOTES:

1. TAB OF COVER TIE IS INSERTED INTO HOLE IN BASE.
2. TORQUE REQUIRED FOR TOP NUT (NOT SHOWN) TO BE 4.0 - 5.0 NEWTON METERS (35-44 IN-LBS).
3. CAP SCREW AND JAM NUT - M5 X 0.8 STEEL, ZINC PLATE WITH TRIVALENT CHROMATE, LEACHED AND SEALED, INTEGRAL TORQUE CONTROL LUBRICANT FINISH. (MEETS 96 HR. ASTM STD. B-117 SALT SPRAY REQ.).
4. HOLDER MEETS L/F VALIDATION TEST SPEC. VS-005004.



| NO COMPONENT NO | | DESCRIPTION | QTY/M | U/M |
|--------------------------------------|----|-------------------------------------|---|-------------|
| BILL OF MATERIAL | | | | |
| COPIES TO | | MATL SPEC | FINISH | |
| 1 | 9 | 18 | DATE | 05/25/05 |
| 2 | 10 | 19 | SCALE | 1:1 |
| 3 | 12 | 20 | DATE | |
| 4 | 13 | 21 | CHK | |
| 5 | 14 | 23 | DATE | |
| 6 | 15 | 33 | APPD | |
| 7 | 16 | 43 | FINISH | GOOD |
| 8 | 17 | 53 | WT | GRAMS/PIECE |
| TOLERANCE UNLESS OTHERWISE SPECIFIED | | THREE PLACE DEC | +/- .100 | |
| ONE PLACE DEC | | TWO PLACE DEC | +/- .13 | |
| 3RD ANGLE PROJECTION | | TITLE | | |
| | | MIDI FUSE HOLDER WITH WIDE OPENINGS | | |
| | | REVISION DRWG. NO. 04980913ZXT | | |
| LTR | | DATE | REVISION | CHK |
| A | | 05/25/05 | 61735 - RELEASE | DJG |
| B | | 06/08/07 | B5460D-REDRAWN IN UG ADDED TOLERANCE TO DIMENSIONS, 7.24 WAS B.19 | GMB |

| | | | |
|--|---|----|---|
| UNLESS OTHERWISE SPECIFIED, DIMENSIONS ARE IN MILLIMETERS. DIMENSIONS IN BRACKETS [] ARE INCHES | UNLESS OTHERWISE SPECIFIED, DIMENSIONS DO NOT INCLUDE PLATING. | ⊙ | DENOTES CRITICAL CHARACTERISTICS. |
| CPK | DENOTES CPK DIMENSIONS, -MINIMUM CPK VALUE | ST | DENOTES A CHARACTERISTIC THAT PROVIDES AN INDICATION OF PROCESS PERFORMANCE. PROCEDURE FOR MEASUREMENT AND TRACKING TO BE DEFINED IN LITTELFUSE INSPECTION INSTRUCTIONS |
| CP | DENOTES CP DIMENSIONS, -MINIMUM CP VALUE MUST BE WITHIN THE DIMENSIONAL LIMITATIONS SHOWN ON DRAWING AND INITIALLY LOCATED TO ALLOW FOR MAXIMUM TOOL LIFE | | |

METRIC