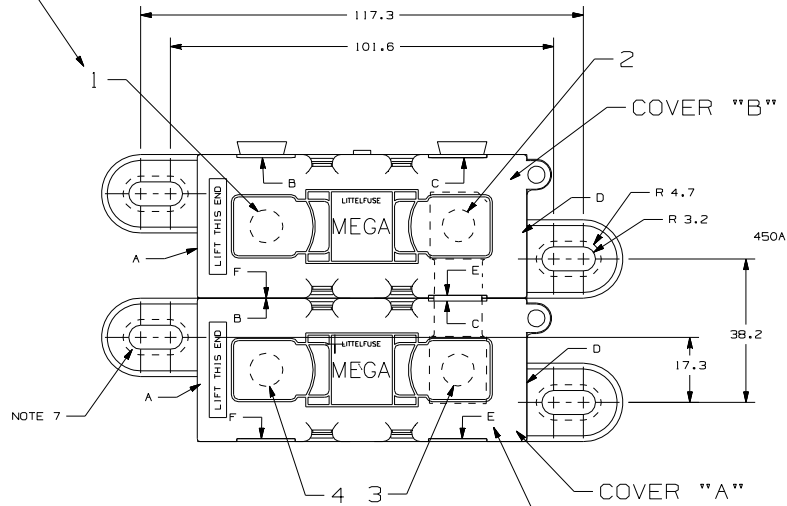


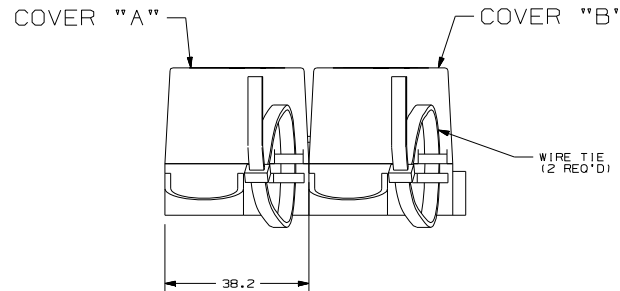
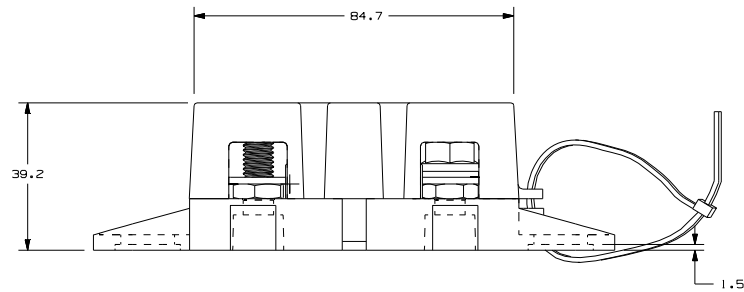
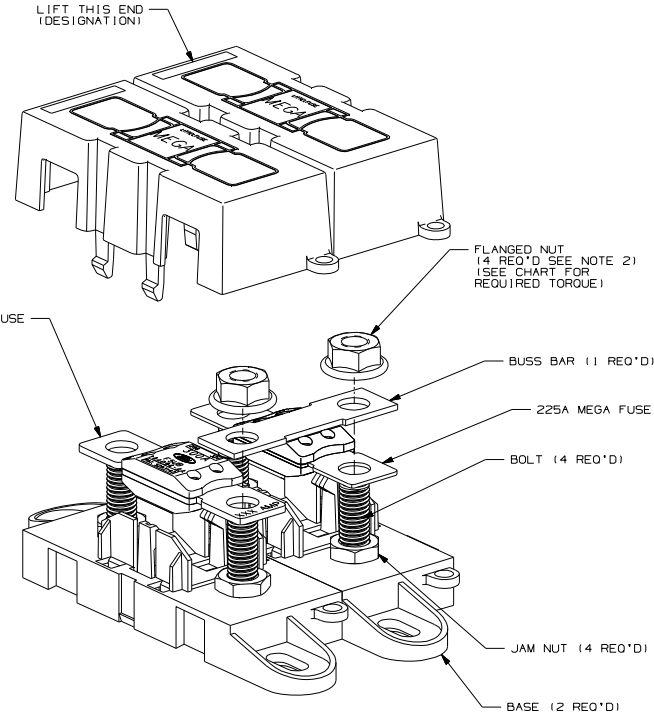
| Partnumber                |                       | COVER "A" OPENING POSITION | COVER "B" OPENING POSITION | FLANGED NUT LOCATION | TORQUE LOCATION NOTE (3) | "NO TORQUE" LOCATION NOTE (5) | FUSE RATING IN LOCATION "A" | FUSE RATING IN LOCATION "B" |
|---------------------------|-----------------------|----------------------------|----------------------------|----------------------|--------------------------|-------------------------------|-----------------------------|-----------------------------|
| Littlefuse<br>02982010ZXT | JLR<br>CK52-14A607-AA | C E F                      | B C E                      | 2 3                  | -                        | 2 3                           | 450 A                       | 225 A                       |

| LTR | DATE        | REVISION  | CHK | APD |
|-----|-------------|---|-----|-----|
| A   | 02/04/11    | 501589ERA-RELEASED                              | OPL |     |
| B   | 18.Feb.2011 | 501674ECA - ADD LF * JLR PART NUMBER TO DRAWING | PJ  |     |
| C   | 08/17/11    | 503068ECA-SEE ECO                               | GMB |     |

BOLD NUMBER DESIGNATION REFERS TO NUT & TORQUE LOCATION (SEE CHART)



LETTER DESIGNATIONS REFER TO POSITIONS OF AVAILABLE COVER OPENINGS. (SEE CHART)



**GENERAL NOTES:**

- COVER RETENTION TEST: MINIMUM FORCE OF 2 LBS. IS REQUIRED TO REMOVE COVER WHEN IT IS SUSPENDED UPSIDE DOWN. FORCE SHALL BE APPLIED THROUGH THE INNER HOLES (2) IN BASE. USE FIXTURE #T-C403 TO SUPPORT PART.
- FLANGED NUT TO MEET THE FOLLOWING CRITERIA: FORD PART NO. W520413 FINISH: S437.
- TORQUE APPLIED AS INDICATED IN CHART TORQUE REQUIREMENTS FOR THE HEX NUT USED TO SECURE THE BUSSBAR OR THE CUSTOMER RING TERMINAL TO THE MEGA FUSE TO BE:  
8mm NUT - 12-18 NEWTON METERS (106-159 IN-LBS)
- L/F VALIDATION TEST SPEC. VS-005005.
- MANUALLY ASSEMBLE FLANGED NUT ONTO STUD AND FINGER TIGHTEN ANYWHERE BELOW TOP OF STUD, FOR ALL "NO TORQUE" LOCATIONS

**6. MATERIALS:**

- BODY - GLASS FILLED THERMOPLASTIC  
COLOR - BLACK
  - COVER - THERMOPLASTIC  
COLOR - BLACK
  - WIRE TIE - THERMOPLASTIC  
COLOR - BLACK
  - STUDS & NUTS - M6 X 1.25 STEEL  
ZINC PLATE WITH TRIVALENT CHROMATE, LEACHED AND SEALED,  
INTEGRAL TORQUE CONTROL LUBRICANT FINISH  
(MEETS 96 HR. ASTM STD. B-117 SALT SPRAY REQ.)
7. MOUNT FUSE HOLDER AT THE LOCATIONS SHOWN USING M6 STUDS AND MATING FLANGE NUTS. TORQUE NUTS TO 4.1±0.7Nm.

| NO | COMPONENT NO | DESCRIPTION | QTY/M | U/M |
|----|--------------|-------------|-------|-----|
| -  |              |             |       |     |
| -  |              |             |       |     |
| -  |              |             |       |     |

**BILL OF MATERIAL**

|   |   |          |          |                |           |
|---|---|----------|----------|----------------|-----------|
| UNLESS OTHERWISE SPECIFIED, DIMENSIONS ARE IN MILLIMETERS. DIMENSIONS IN BRACKETS ( ) ARE INCHES. |   |          |          |                |           |
| UNLESS OTHERWISE SPECIFIED, DIMENSIONS DO NOT INCLUDE PLATING.                                    |   |          |          |                |           |
| ⊙   | DENOTES CRITICAL CHARACTERISTICS.   |          |          |                |           |
| CPK   | DENOTES CPK DIMENSIONS. -MINIMUM CPK VALUE  |          |          |                |           |
| ST  | DENOTES A CHARACTERISTIC THAT PROVIDES AN INDICATION OF PROCESS PERFORMANCE. PROCEDURE FOR MEASUREMENT AND TRACKING TO BE DEFINED IN LITTELFUSE INSPECTION INSTRUCTIONS |          |          |                |           |
| CP  | DENOTES CP DIMENSIONS. -MINIMUM CP VALUE MUST BE WITHIN THE DIMENSIONAL LIMITATIONS SHOWN ON DRAWING AND INITIALLY LOCATED TO ALLOW FOR MAXIMUM TOOL LIFE               |          |          |                |           |
| MATERIAL SPEC   |   |          |          |                |           |
| COPIES TO   |   |          |          |                |           |
| 1   | 9   | 18       |          |                |           |
| 2   | 10  | 19       |          |                |           |
| 3   | 12  | 20       |          |                |           |
| 4   | 13  | 21       |          |                |           |
| 5   | 14  | 23       |          |                |           |
| 6   | 15  | 33       |          |                |           |
| 7   | 16  | 43       |          |                |           |
| 8   | 17  | 53       |          |                |           |
| FINISH  |   |          |          |                |           |
| DRW   | OPL   | DATE     | 01/19/11 | SCALE 1:1      |           |
| CHK   |   | DATE     |          | SUPER DR       |           |
| APPD  |   | DATE     |          | FINISH GOOD WT |           |
| TOLERANCES UNLESS OTHERWISE SPECIFIED (REF. ISO 2768-MH)  |   |          |          |                |           |
| DIMENSION   | 0.5 - 3   | 3 - 6    | 6 - 30   | 30 - 120       | 120 - 400 |
| TOLERANCE   | ±0.05   | ±0.05    | ±0.1     | ±0.15          | ±0.2      |
| 3RD ANGLE PROJECTION  |   |          |          |                |           |
| TITLE   |   |          |          |                |           |
| DUAL MEGAFUSE HOLDER  |   |          |          |                |           |
| METRIC COMPONENT  |   | REVISION |          | DRWG. NO.      |           |
|   |   | C        |          | 02982010ZXT    |           |
|   |   |          |          | OUTLINE        |           |
|   |   |          |          | GRAMS/PIECE    |           |
| CHICAGO, USA 773-628-1000   |   |          |          |                |           |

CAD GENERATED DRAWING - NO PENCIL CHANGES ALLOWED (REV C)