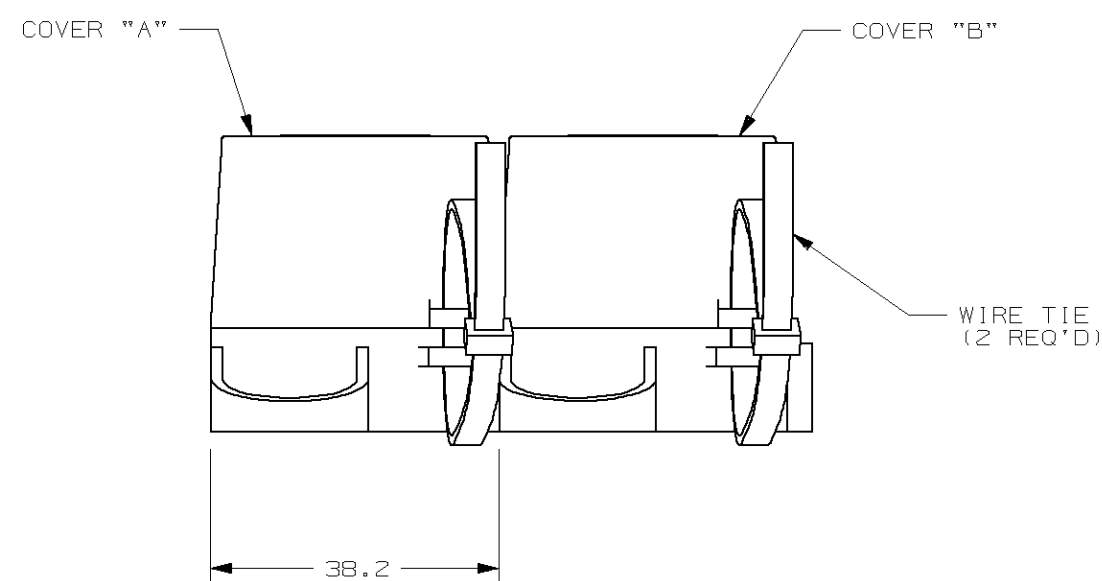
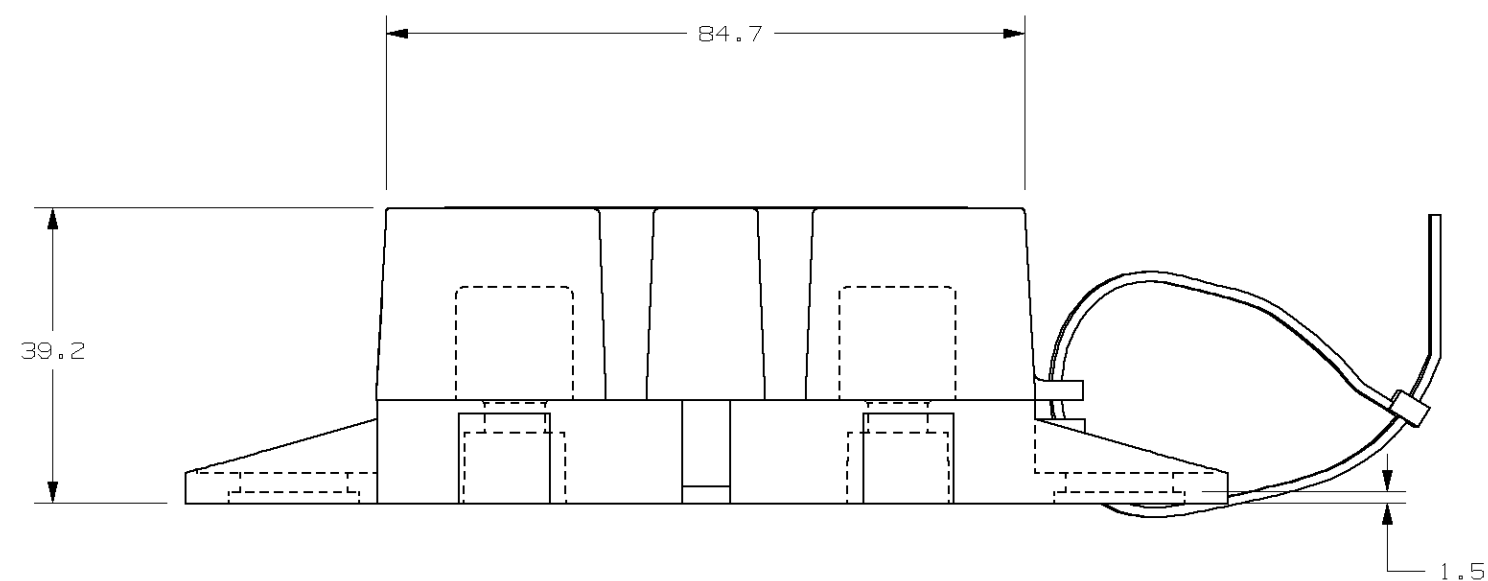
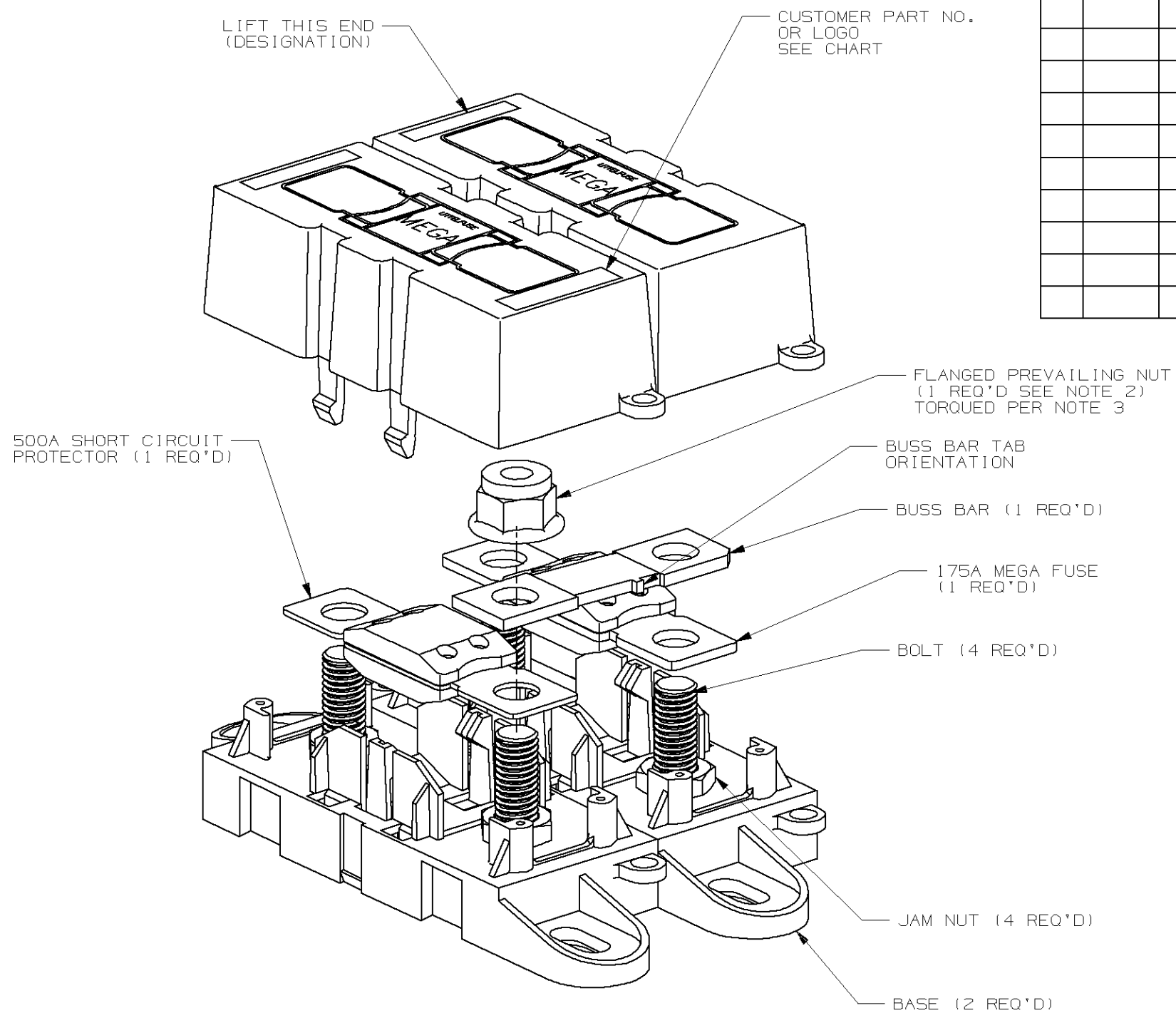
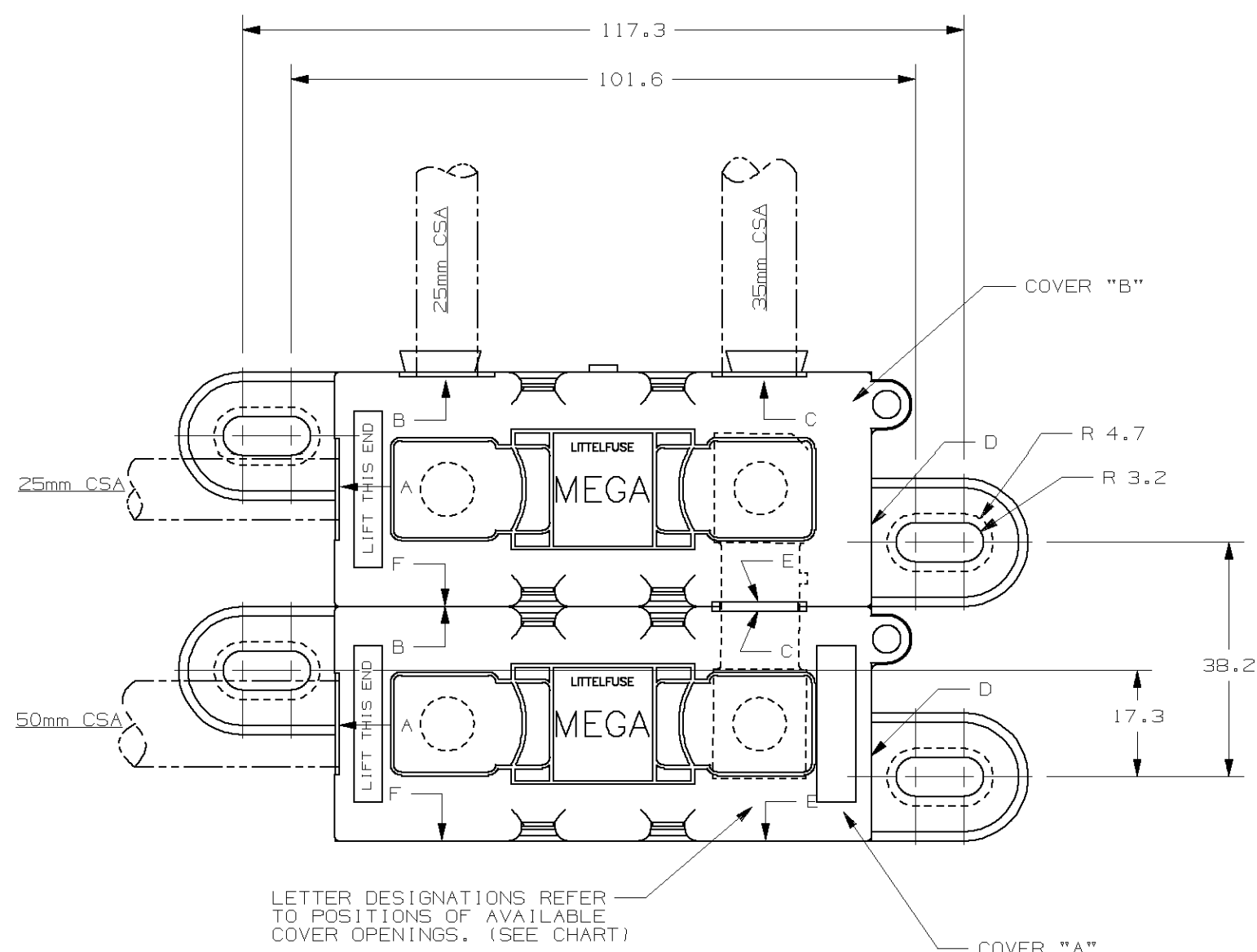


COVER PART	COVER OPENING POSITION	JAGUAR PART NO. OR LOGO
A	A C	LJE2850AA
B	A B C E	N/A

LTR	DATE	REVISION	CHK	APD
C	03/29/07	85414D-REDRAWN IN UG GMB		
D	08/31/07	000170EC/C - REMOVE USA FROM COVER	BRK	
E	04/24/08	000463EC/D-CHG. NOTE 3	GMB	



GENERAL NOTES:

- COVER RETENTION TEST: MINIMUM FORCE OF 2 LBS. IS REQUIRED TO REMOVE COVER WHEN IT IS SUSPENDED UPSIDE DOWN. FORCE SHALL BE APPLIED THROUGH THE INNER HOLES (2) IN BASE. USE FIXTURE #T-C403 TO SUPPORT PART.
- FLANGED PREVAILING NUT TO MEET THE FOLLOWING CRITERIA:
FORD PART NO. W520202
FINISH: S437.
- TORQUE APPLIED TO NUT
TORQUE REQUIREMENTS FOR THE HEX NUT USED TO SECURE THE BUSSBAR OR THE CUSTOMER RING TERMINAL TO THE MEGA FUSE TO BE:
8mm NUT - 12-18 NEWTON METERS [106-159 IN-LBS]
- DUAL HOLDER MEETS L/F VALIDATION TEST SPEC. VS-005005.

5. MATERIALS:

- * BODY - GLASS FILLED THERMOPLASTIC
COLOR - BLACK
- * COVER - THERMOPLASTIC
COLOR - BLACK
- * WIRE TIE - THERMOPLASTIC
COLOR - BLACK
- * STUDS & NUTS - MB X 1.25 STEEL
ZINC PLATE WITH TRIVALENT CHROMATE, LEACHED AND SEALED,
INTEGRAL TORQUE CONTROL LUBRICANT FINISH
(MEETS 96 HR. ASTM STD. B-117 SALT SPRAY REQ.)
- * PREVAILING TORQUE ELEMENT - NYLON, COLOR OPTIONAL

NO	COMPONENT NO	DESCRIPTION	QTY/M	U/M
-	-	-	-	-
-	-	-	-	-
-	-	-	-	-

BILL OF MATERIAL

UNLESS OTHERWISE SPECIFIED, DIMENSIONS ARE IN MILLIMETERS. DIMENSIONS IN BRACKETS [] ARE INCHES			
UNLESS OTHERWISE SPECIFIED, DIMENSIONS DO NOT INCLUDE PLATING.			
⊙	DENOTES CRITICAL CHARACTERISTICS.		
CPK	DENOTES CPK DIMENSIONS. -MINIMUM CPK VALUE		
ST	DENOTES A CHARACTERISTIC THAT PROVIDES AN INDICATION OF PROCESS PERFORMANCE. PROCEDURE FOR MEASUREMENT AND TRACKING TO BE DEFINED IN LITTELFUSE INSPECTION INSTRUCTIONS		
CP	DENOTES CP DIMENSIONS. -MINIMUM CP VALUE MUST BE WITHIN THE DIMENSIONAL LIMITATIONS SHOWN ON DRAWING AND INITIALLY LOCATED TO ALLOW FOR MAXIMUM TOOL LIFE		
COPIES TO			
1	9	18	
2	10	19	FINISH
3	12	20	
4	13	21	DRW D. GLAB DATE 06/27/05 SCALE 1:1
5	14	23	CHK DATE SUPER DR
6	15	33	APPD DATE FINSH GOOD WT
7	16	43	
8	17	53	GRAMS/PIECE
TOLERANCE UNLESS OTHERWISE SPECIFIED			
ONE PLACE DEC +/- .3		THREE PLACE DEC +/- .100	
TWO PLACE DEC +/- .25		ANGULAR +/- .1°	
3RD ANGLE PROJECTION	TITLE DUAL MEGAFUSE HOLDER FOR 500A & 175A (JAGUAR LJE2850AA)		
Littelfuse	REVISION	DRWG. NO.	OUTLINE
	E	02982005ZXT	

METRIC

CAD GENERATED DRAWING - NO PENCIL CHANGES ALLOWED