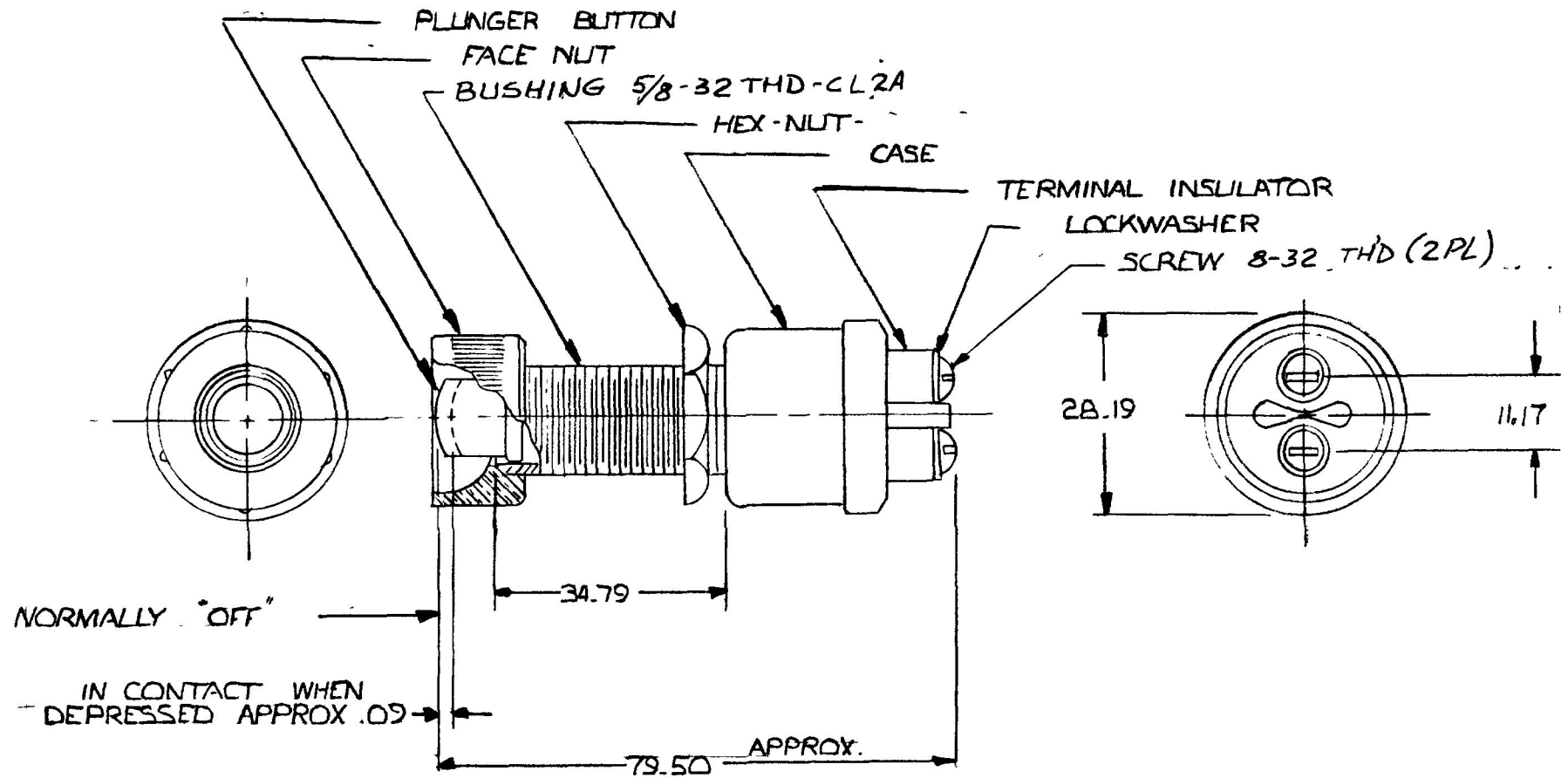


M612

mm IN
 .09 .004
 11.17 .44
 28.19 1.11
 34.79 1.37
 79.50 3.13



NOTE:
 SILVER LAMINATED
 CONTACT SURFACES

35 AMPS @ 12V DC

METRIC

DO NOT SCALE

LET	WAS	DATE	BY	LET	WAS	DATE	BY	MATERIAL	DRAWN	CHECKED	APPRV D	SCALE	DATE DRAWN
								NOTED	J	K	HF	1:1	12-18-87
								FINISH	 Cole Hersee Co. <small>20 OLD COLONY AVENUE SOUTH BOSTON MA. U.S.A. 02127</small>				DATE BLUEPRINT
								NOTED					
								TOLERANCES	HEAVY DUTY STARTER SWITCH				M612
								DECIMAL ±					
					REDRAWN	12-21-87	J	METRIC ±.010					

CH-188(4-78)