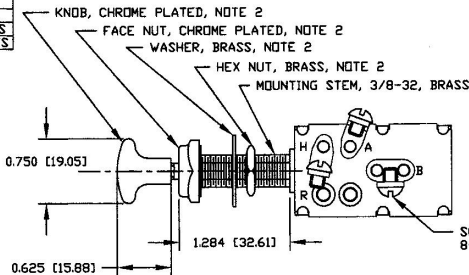
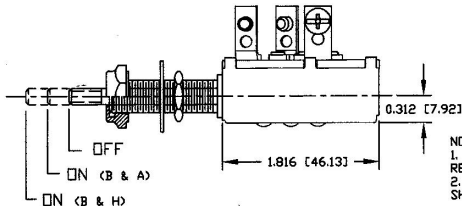
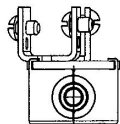


| LEGEND | |
|--------|----------------|
| B | BATTERY |
| A | ANCHOR LIGHTS |
| H | RUNNING LIGHTS |



| Revision Control Record | | | |
|-------------------------|---------------------------|---------|----------|
| Rev. | Description of Change | ECN No. | Date |
| D | NEW TERM INSUL SA CASE SA | 00722 | 10/17/00 |
| E | NOTE 2 | 00796 | 10/24/00 |
| F | REMOVE LOCKWASHERS | 01227 | 4/17/01 |
| | | | |
| | | | |

SCREW, BRASS
8-32 (3 REQ'D), NOTE 2



NOTES:
1. ALL DIMENSIONS ARE REFERENCE ONLY
2. ALL HARDWARE AND KNOB SHIPPED LOOSE

Tolerances - Unless otherwise specifically noted, the following are default tolerances:
 * 2-place Decimal Dimensions $\pm .02"$
 * 3-place Decimal Dimensions $\pm .005"$
 * Angular Dimensions ± 1.0 Deg.
 * Metric: Refer to equivalent English Dimension Tolerance
 * >>> NOTE: All tolerances are Non-Cumulative. <<<

Dimension Units - All dimensions are expressed in inches except those shown in brackets (xxx) are expressed in millimeters

"NEE" or an Asterisk (*) = Non-Tolerance Reference Dimension, shown for clarification purposes only.

PROPRIETARY INFORMATION - This Engineering Drawing, and the information contained herein, is proprietary to Cole Hersee Company and may not be disclosed, re-produced, or in any other way transferred or communicated to any other party without the express written consent of an authorized representative of Cole Hersee Company.

DESIGN CONTROL - It is the responsibility of the individual using / referencing this drawing to ensure that the noted design revision level agrees with the revision level of the Controlled Document (Master Drawing). This is a NON-CONTROLLED DOCUMENT unless otherwise specifically noted.

DO NOT SCALE - Dimensional variation may occur during printing / reproduction.

Key for Special Characteristics:

- Critical Characteristic, relating to Safety and/or Regulatory Compliance
- Significant Characteristic relating to Process Control (SPC)
- Control Dimension relating to Form - Fit - Function as defined by Cole Hersee Company and/or the Customer

(Note that the identification of any Characteristics as being "Special" does not alter the requirement that ALL specified dimensions & tolerances must be met.)



Cole Hersee Co.

20 Old Colony Ave., South Boston, MA, 02127
 Pn: 617-256-2100 Web: www.colehersee.com

Description: 3 POS LIGHT SWITCH

Drawing / Part No.:

M531

Current Rev.:

F

Used On or Ref.: Scale: **1:1**

Drawn By: **JWH**

Date: **2/26/48**

Responsible Engineer: **JRV** Pg. 1 of 1