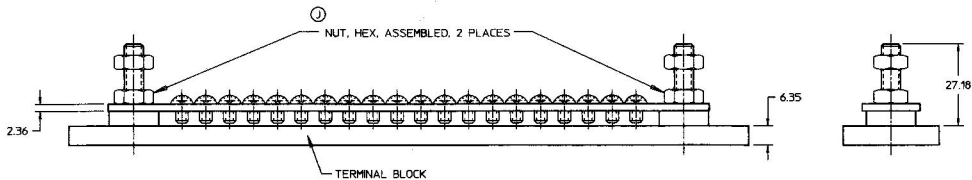
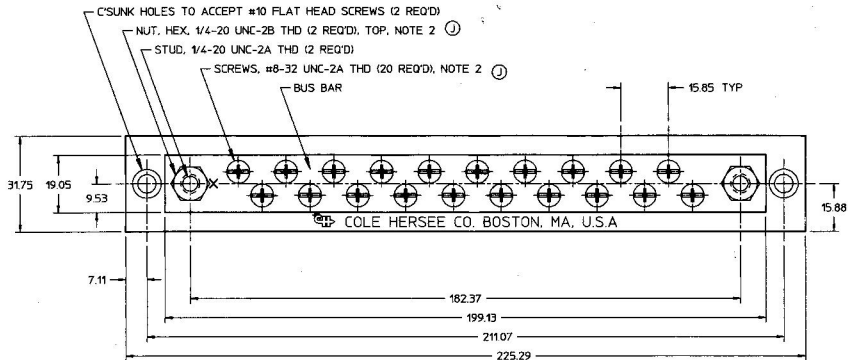



| MM     | IN    |
|--------|-------|
| 2.36   | 0.093 |
| 6.35   | 0.250 |
| 7.11   | 0.280 |
| 9.53   | 0.375 |
| 15.85  | 0.624 |
| 15.88  | 0.625 |
| 19.05  | 0.750 |
| 27.18  | 1.070 |
| 31.75  | 1.250 |
| 182.37 | 7.180 |
| 199.13 | 7.840 |
| 211.07 | 8.310 |
| 225.29 | 8.870 |



- NOTE:  
 1. ALL DIMENSIONS ARE REFERENCE  
 2. PARTS MAY BE ASSEMBLED OR SUPPLIED IN A PLASTIC BAG

DO NOT SCALE

Confidential Property of Cole Hersee

| LET. | WAS | DATE | BY | LET. | WAS                     | DATE    | BY  | MATERIAL   | DRWEN  | CHK | APVD | SCALE | DATE DRAWN       |
|------|-----|------|----|------|-------------------------|---------|-----|------------|--|-----|------|-------|------------------|
|      |     |      |    |      |                         |         |     |            | EHD  | JMP |      | 1:1   | 1/8/60           |
|      |     |      |    |      |                         |         |     | FINISH     |  |     |      |       | DATE BLUEPRINTED |
|      |     |      | J  |      | SON #28936              | 7/29/97 | AJS | TOLERANCES |  <b>Cole Hersee Co.</b><br>20 OLD COLONY AVENUE, BOSTON, MA, U.S.A. 02107 |     |      |       |                  |
|      |     |      | H  |      | PUT ON CAD / SON #28973 | 5/11/95 | MJT | DECIMAL ±  |  |     |      |       | 20 GANG MARINE   |
|      |     |      |    |      |                         |         |     | ANGLE ±    | TERMINAL BLOCK   |     |      |       | M-448            |

METRIC