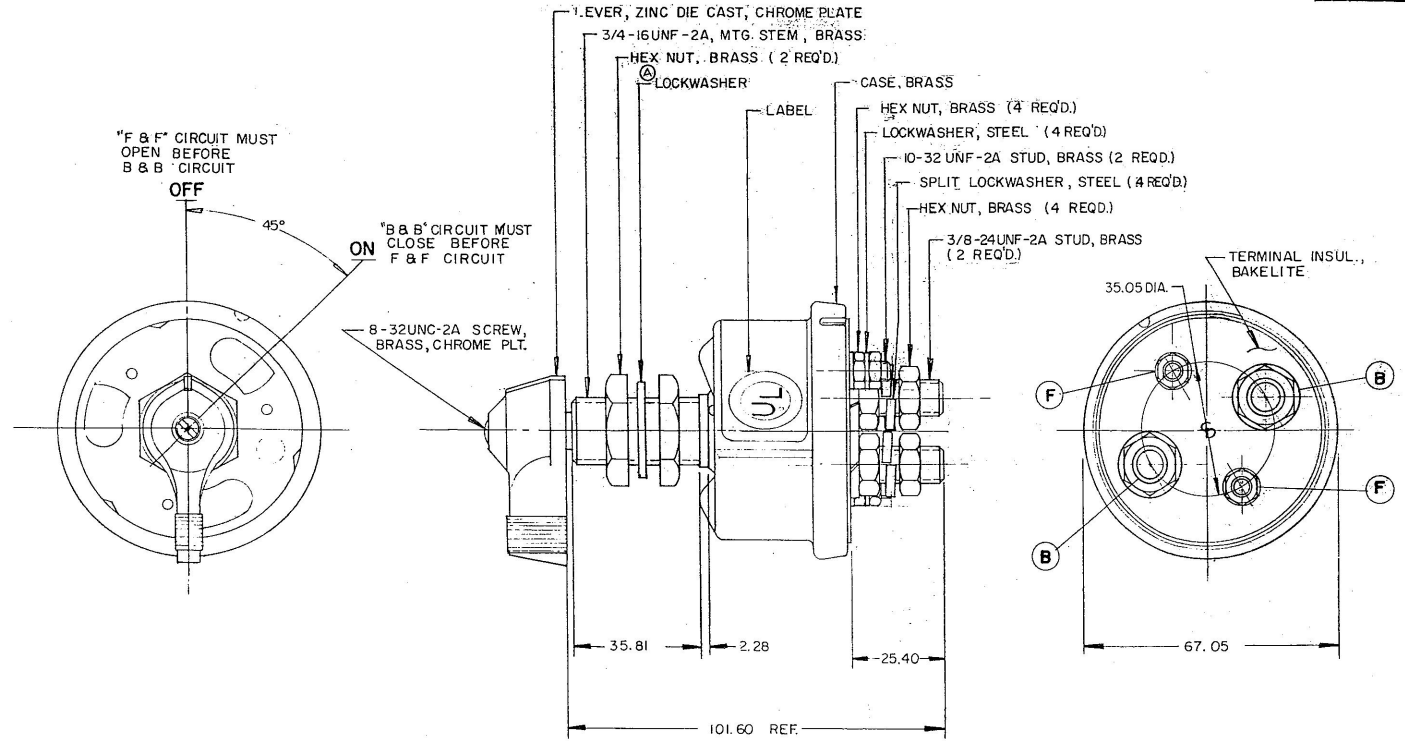


MM	IN
10.25	0.40
12.50	0.50
15.00	0.60
17.50	0.70
20.00	0.80
22.50	0.90
25.00	1.00
27.50	1.10
30.00	1.20
32.50	1.30
35.00	1.40
37.50	1.50
40.00	1.60

COLE HERSEE CO.
NPM 8-13-79



"F & F" CIRCUIT MUST
OPEN BEFORE
B & B CIRCUIT

OFF

45°

"B & B" CIRCUIT MUST
CLOSE BEFORE
F & F CIRCUIT

8-32UNC-2A SCREW,
BRASS, CHROME PLT.

NOTE:
ALL STEEL PARTS EITHER ZINC PLATE
WITH DICHROMATE DIP OR CADMIUM PLATE.

Confidential Property of Cole Hersee

FOR USE WITH ALTERNATOR OR GENERATOR SYSTEMS

DO NOT SCALE

METRIC

LET	WAS	DATE	BY	LET	WAS	DATE	BY	MATERIAL	DRAWN	CHECKED	APPROVED	SCALE	DATE DRAWN
								#	JAV			1:1	2-9-79
<p>COLE-HERSEE COMPANY BOSTON, MASS. 02127, U.S.A.</p>													DATE BLUEPRINT
<p>ISSUED 8-16-79</p>													DATE BLUEPRINT
<p>MASTERS DISCONNECT SW</p>													M 290-05