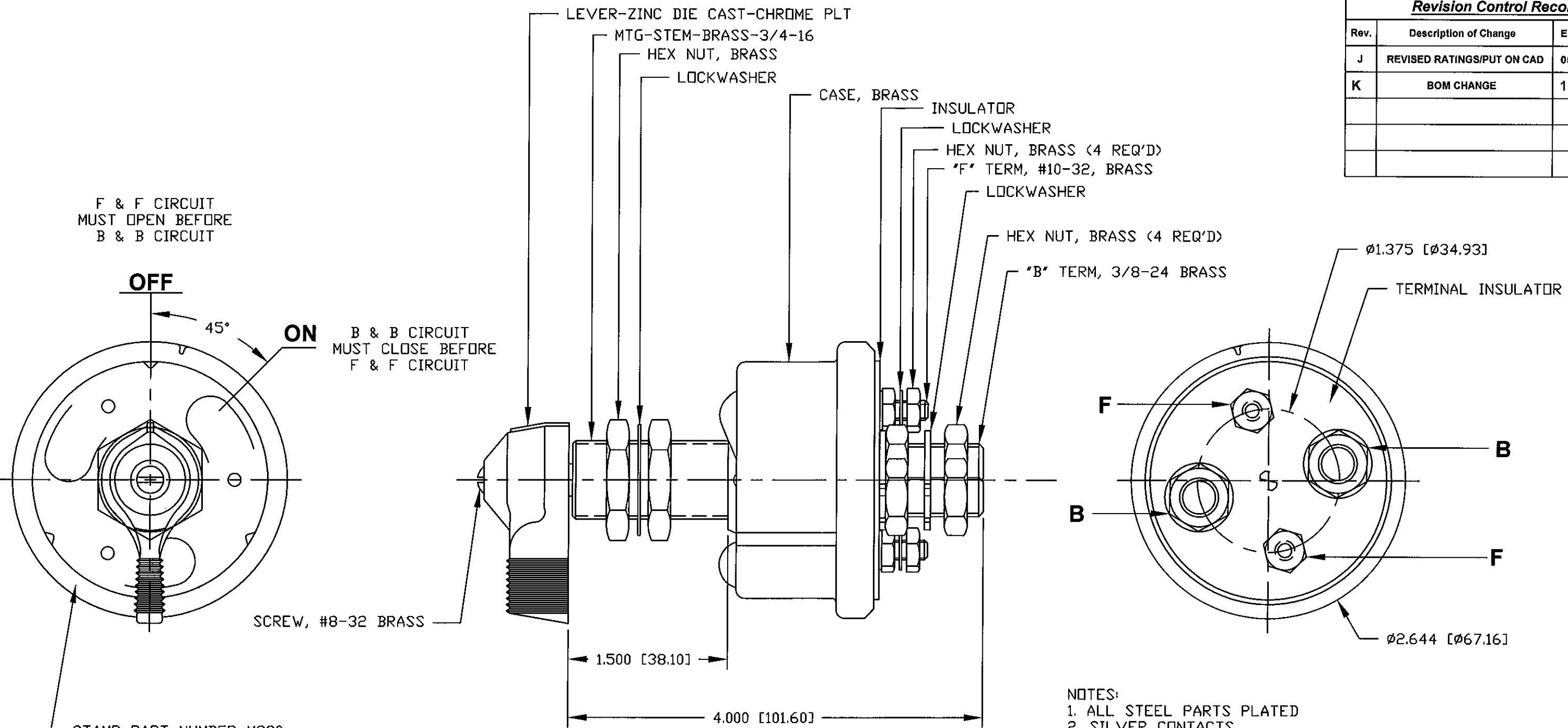


Revision Control Record

Rev.	Description of Change	ECN No.	Date
J	REVISED RATINGS/PUT ON CAD	05224	5/17/05
K	BOM CHANGE	10175	4/30/10



STAMP PART NUMBER M290 & DATE CODE AT RANDOM LOCATION

- NOTES:
1. ALL STEEL PARTS PLATED
 2. SILVER CONTACTS
 3. CONTINUOUS RATING: 6-12-24-36 VOLTS D.C., LARGE STUDS 175 AMPS, SMALL STUDS 20 AMPS
 INTERMITTENT RATING: 6-12-24-36 VOLTS D.C., LARGE STUDS 1000 AMPS, 15 SECONDS ON, 5 MINUTES OFF
 4. BRASS CONTACTS 75903 & M289
 SILVER CONTACTS 75904 & M290
 5. ALL DIMENSIONS REFERENCE ONLY

<p>Tolerances Unless otherwise specifically noted, the following are default tolerances: * 2-place Decimal Dimensions +/- .02" * 3-place Decimal Dimensions +/- .005" * Angular Dimensions +/- 1.0 Deg. * Metric: Refer to equivalent English Dimension Tolerance >>> NOTE: All tolerances are Non-Cumulative. <<<</p> <p>Dimensional Units All dimensions are expressed in inches except those shown in brackets (xxx) are expressed in millimeters</p> <p>"REF." or an Asterisk (*) = Non-Toleranced Reference Dimension, shown for clarification purposes only.</p>	<p>PROPRIETARY INFORMATION This Engineering Drawing, and the information contained herein, is proprietary to Cole Hersee Company and may not be disclosed, re-produced, or in any other way transferred or communicated to any other party without the express written consent of an authorized representative of Cole Hersee Company.</p> <p>DESIGN CONTROL It is the responsibility of the individual using/ referencing this drawing to assure that the noted design revision level agrees with the revision level of the Controlled Document (Master Drawing). This is a NON-CONTROLLED DOCUMENT unless otherwise specifically noted.</p> <p>DO NOT SCALE - Dimensional variation may occur during printing/ reproduction.</p>	<p>Special Characteristics:</p> <p>⬠ Critical Characteristic, relating to Safety and/or Regulatory Compliance</p> <p>X Significant Characteristic relating to Process Control (SPC)</p> <p>Ⓚ Control Dimension relating to Form - Fit - Function as defined by Cole Hersee Company and/or the Customer</p> <p>(Note that the identification of any Characteristics as being "Special" does not alter the requirement that ALL specified dimensions & tolerances must be met.)</p>	<p>Cole Hersee Co. 20 Old Colony Ave., South Boston, MA, 02127 Phn: 617-268-2100 Web: www.colehersee.com</p>		
			<p>Description: MASTER DISCONNECT SWITCH</p>		<p>Drawing / Part No.: M-290</p>
<p>Used On or Ref.:</p>	<p>Scale: 1:1</p>	<p>Drawn By: CF</p>	<p>Date Drawn: 6/24/69</p>	<p>Responsible Engineer: NA</p>	<p>Pg. 1 of 1</p>