

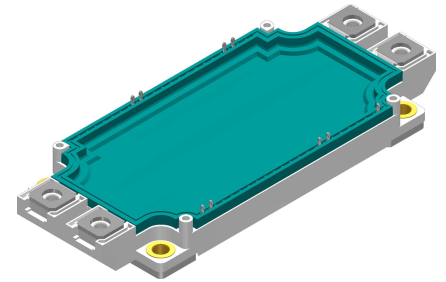
Standard Rectifier Module

$V_{RRM} = 2 \times 1600 \text{ V}$
 $I_{FAV} = 425 \text{ A}$
 $V_F = 1.21 \text{ V}$

Phase leg + NTC

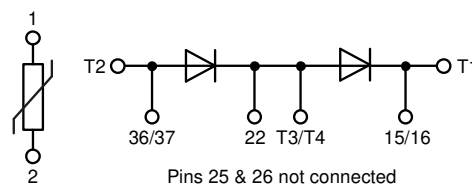
Part number

MDMA425P1600PTSF



Backside: isolated

 E72873



Features / Advantages:

- Package with DCB ceramic
- Improved temperature and power cycling
- Planar passivated chips
- Very low forward voltage drop
- Very low leakage current

Applications:

- Diode for main rectification
- For single and three phase bridge configurations
- Supplies for DC power equipment
- Input rectifiers for PWM inverter
- Battery DC power supplies
- Field supply for DC motors

Package: SimBus F

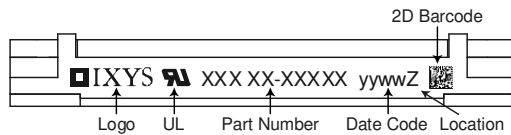
- Isolation Voltage: 4300 V~
- Industry standard outline
- RoHS compliant
- PressFit-Pins for PCB mounting
- Height: 17 mm
- Base plate: Copper internally DCB isolated
- Advanced power cycling
- Phase Change Material available

Disclaimer Notice

Information furnished is believed to be accurate and reliable. However, users should independently evaluate the suitability of and test each product selected for their own applications. Littelfuse products are not designed for, and may not be used in, all applications. Read complete Disclaimer Notice at www.littelfuse.com/disclaimer-electronics.

Rectifier				Ratings			
Symbol	Definition	Conditions		min.	typ.	max.	Unit
V_{RSM}	max. non-repetitive reverse blocking voltage			$T_{VJ} = 25^{\circ}C$		1700	V
V_{RRM}	max. repetitive reverse blocking voltage			$T_{VJ} = 25^{\circ}C$		1600	V
I_R	reverse current	$V_R = 1600$ V		$T_{VJ} = 25^{\circ}C$		300	μA
		$V_R = 1600$ V		$T_{VJ} = 150^{\circ}C$		8	mA
V_F	forward voltage drop	$I_F = 425$ A		$T_{VJ} = 25^{\circ}C$		1.29	V
		$I_F = 850$ A				1.65	V
		$I_F = 425$ A		$T_{VJ} = 125^{\circ}C$		1.21	V
		$I_F = 850$ A				1.64	V
I_{FAV}	average forward current	$T_C = 100^{\circ}C$		$T_{VJ} = 150^{\circ}C$		425	A
		rectangular	d = 0.5				
V_{FO}	threshold voltage			$T_{VJ} = 150^{\circ}C$		0.77	V
r_F	slope resistance					1.01	m Ω
		} for power loss calculation only					
R_{thJC}	thermal resistance junction to case					0.07	K/W
R_{thCH}	thermal resistance case to heatsink				0.04		K/W
P_{tot}	total power dissipation			$T_C = 25^{\circ}C$		1785	W
I_{FSM}	max. forward surge current	t = 10 ms; (50 Hz), sine		$T_{VJ} = 45^{\circ}C$		10.0	kA
		t = 8,3 ms; (60 Hz), sine		$V_R = 0$ V		10.8	kA
		t = 10 ms; (50 Hz), sine		$T_{VJ} = 150^{\circ}C$		8.50	kA
		t = 8,3 ms; (60 Hz), sine		$V_R = 0$ V		9.18	kA
I^2t	value for fusing	t = 10 ms; (50 Hz), sine		$T_{VJ} = 45^{\circ}C$		500.0	kA ² s
		t = 8,3 ms; (60 Hz), sine		$V_R = 0$ V		485.2	kA ² s
		t = 10 ms; (50 Hz), sine		$T_{VJ} = 150^{\circ}C$		361.3	kA ² s
		t = 8,3 ms; (60 Hz), sine		$V_R = 0$ V		350.6	kA ² s
C_J	junction capacitance	$V_R = 400$ V; f = 1 MHz		$T_{VJ} = 25^{\circ}C$		661	pF

Package SimBus F		Ratings				
Symbol	Definition	Conditions	min.	typ.	max.	Unit
I_{RMS}	RMS current	per terminal			tbd	A
T_{VJ}	virtual junction temperature		-40		175	°C
T_{op}	operation temperature		-40		150	°C
T_{stg}	storage temperature		-40		125	°C
Weight				350		g
M_D	mounting torque		3		6	Nm
M_T	terminal torque		3		6	Nm
$d_{Spp/App}$	creepage distance on surface striking distance through air	terminal to terminal	13.3	10.0		mm
$d_{Spb/Apb}$		terminal to backside	10.2	10.2		mm
V_{ISOL}	isolation voltage	t = 1 second		4300		V
		t = 1 minute	50/60 Hz, RMS; $I_{ISOL} \leq 1$ mA	3600		V


Part description

- M = Module
- D = Diode
- M = Standard Rectifier
- A = (up to 1800V)
- 425 = Current Rating [A]
- P = Phase leg
- 1600 = Reverse Voltage [V]
- PT = PressFit-Pin, Thermistor
- SF = SimBus F
- = Hyphen
- PC = Phase Change Material

Ordering	Ordering Number	Marking on Product	Delivery Mode	Quantity	Code No.
Standard	MDMA425P1600PTSF	MDMA425P1600PTSF	Blister	24	519078
Alternative	MDMA425P1600PTSF-PC	MDMA425P1600PTSF	Blister	24	519057

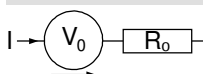
Similar Part	Package	Voltage class
MDMA300P1600PTSF	SimBus F	1600
MDMA600P1600PTSF	SimBus F	1600
MDNA300P2200PTSF	SimBus F	2200
MDNA600P2200PTSF	SimBus F	2200

Temperature Sensor NTC

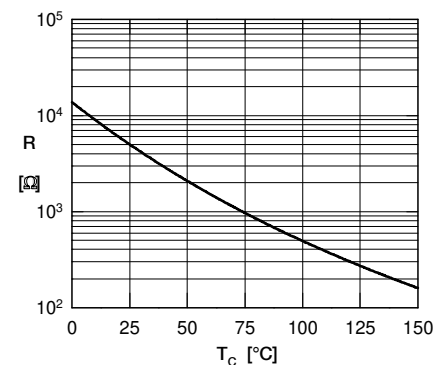
Symbol	Definition	Conditions	min.	typ.	max.	Unit
R_{25}	resistance	$T_{VJ} = 25^\circ$	4.85	5	5.15	k Ω
$B_{25/50}$	temperature coefficient			3375		K

Equivalent Circuits for Simulation

* on die level

 $T_{VJ} = 150^\circ\text{C}$


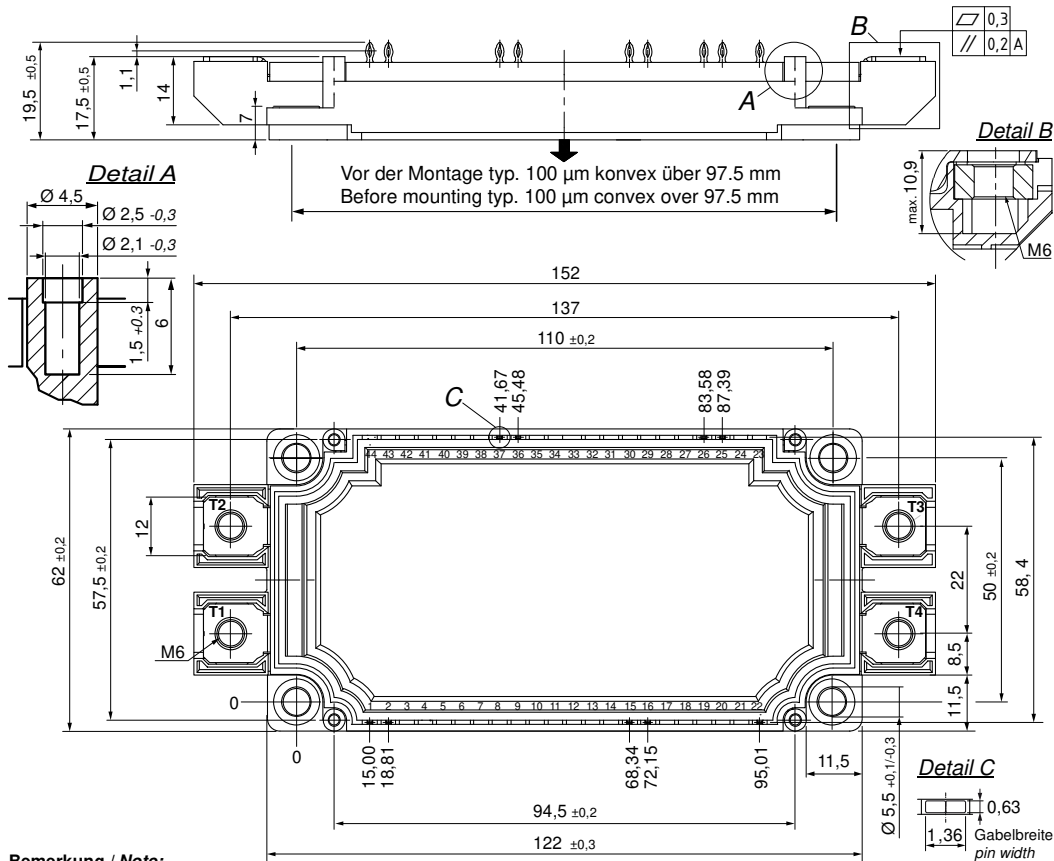
$V_{0 \max}$	threshold voltage	0.77				V
$R_{0 \max}$	slope resistance *	0.29				m Ω



Typ. NTC resistance vs. temperature



Outlines SimBus F

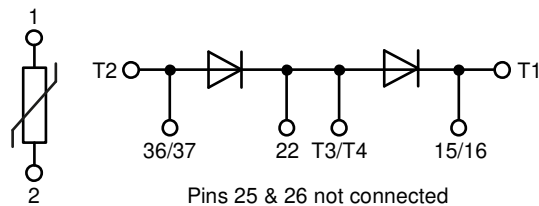


Bemerkung / Note:

- Nichttolerierete Maße nach / Measure w/o tolerances acc. DIN ISO 2768-T1-m
- PCB-Lochmuster / PCB hole pattern: see pin position
- Toleranz Pin-Position und PCB-Lochmuster / Tolerance of pin position and PCB hole pattern: $\oplus 0.1$
- Bohrlochdurchmesser / Diameter of drill: $\varnothing 1.16$ mm
- Endlochdurchmesser / Diameter of plated holes: $\varnothing 1.00 - 1.10$ mm (Cu thickness in via typ. 50 μm)
- Beschichtung / Plating: chem. Sn max. 15 μm
- Einpresskraft / Insert Force: per terminal with a typ. insert speed of 1 mm/s: typ. 90 N
- Weitere Angaben / Further information: www.ixys.com Application note IXAN0077
- Montageanleitung / Mounting instruction: www.ixys.com Application note IXAN0024

Detail A: PCB-Montage / Mounting on PCB^L

- Empfohlene, selbstschneidende Schraube / Recommended, self-tapping screw: **EJOT PT®** (Größe / size: **K25**)^L
- Max. Schraubenlänge / Max. screw length: **PCB-Dicke / thickness + 6 mm** (max. Lochtiefe / hole depth)^L
- Empfohlenes Drehmoment / Recommended mounting torque: **1.5 Nm**



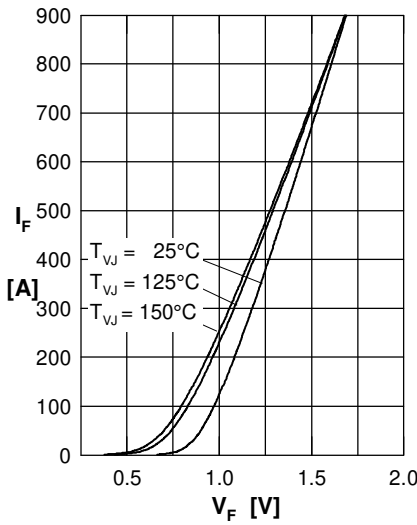
Rectifier


Fig. 1 Forward current versus voltage drop per diode

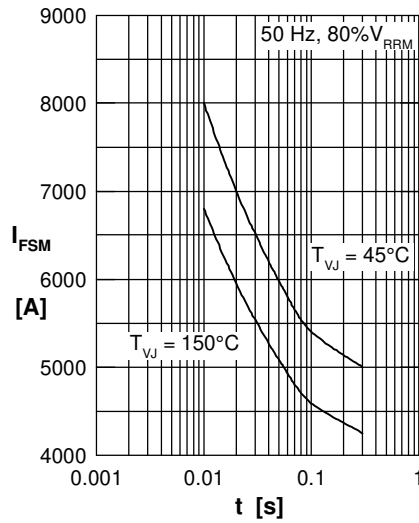


Fig. 2 Surge overload current vs. time per diode

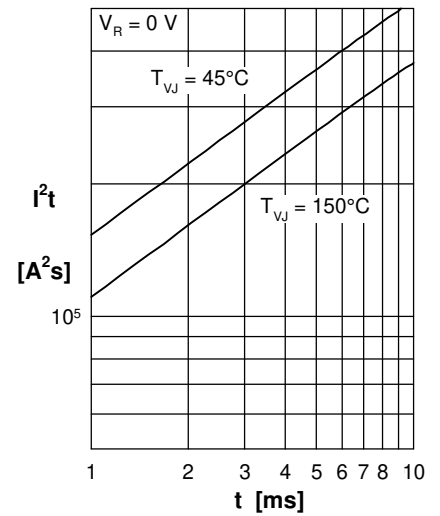
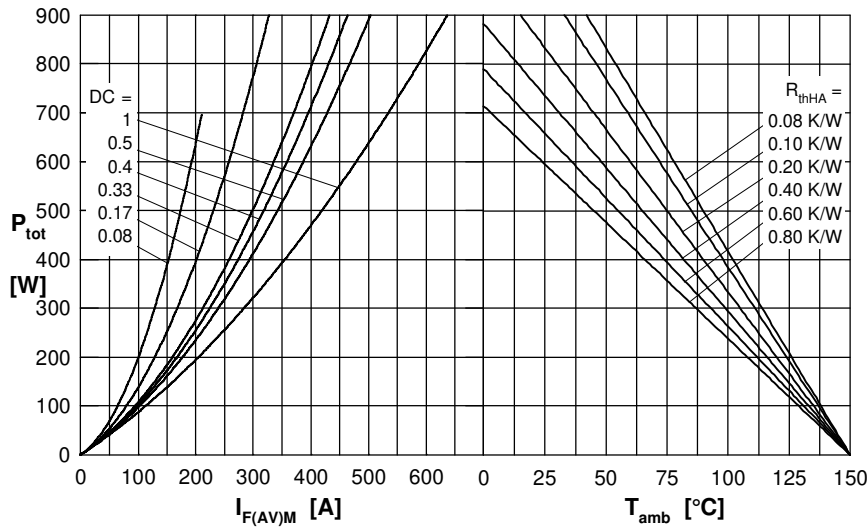

 Fig. 3 I^2t versus time per diode


Fig. 4 Power dissipation vs. forward current and ambient temperature per diode

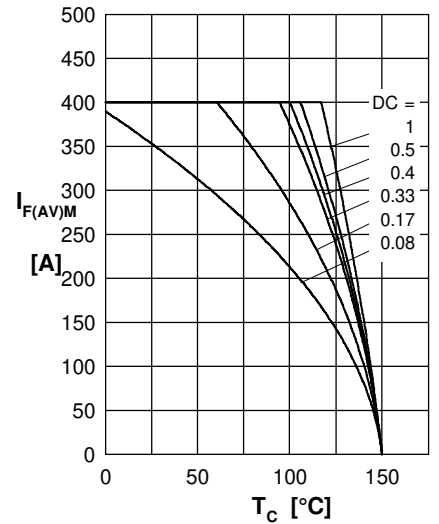


Fig. 5 Max. forward current vs. case temperature per diode

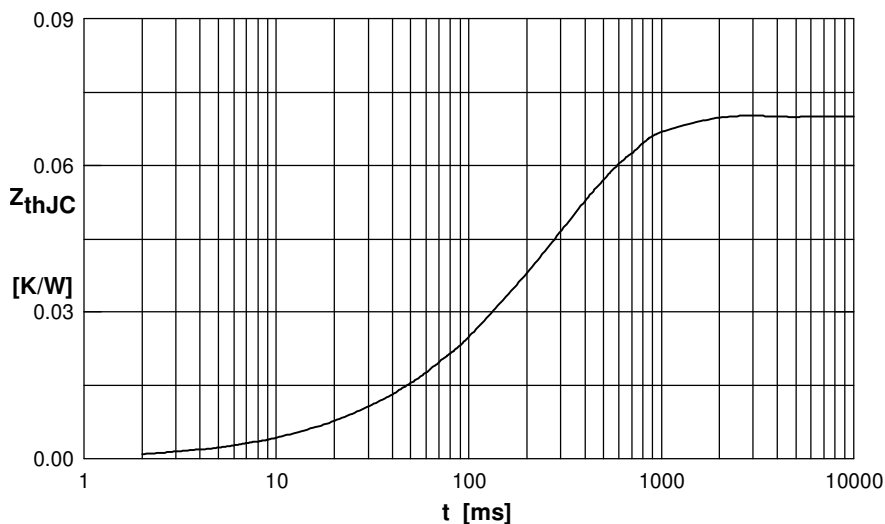


Fig. 6 Transient thermal impedance junction to case vs. time per diode

 Constants for Z_{thJC} calculation:

i	R_{thi} (K/W)	t_i (s)
1	0.003	0.0150
2	0.009	0.0800
3	0.016	0.2200
4	0.042	0.3800