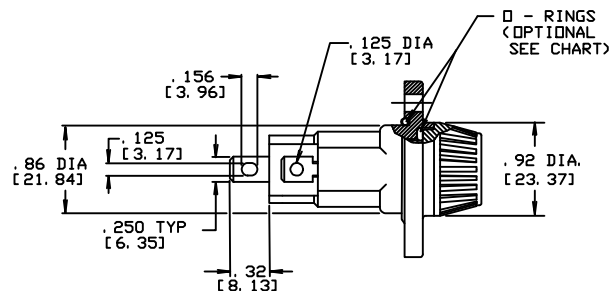


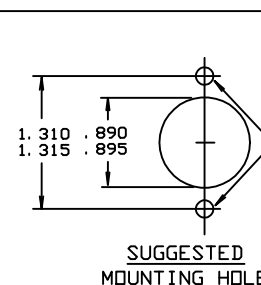
**AVAILABLE OPTIONS**

PART NO.	DESCRIPTION
0571007	FUSEHOLDER (FOR MIDGET TYPE FUSES 1 13/32" - 1 1/2" LONG) SOLDER/QC TERMINALS, STRAIGHT BOTTOM TERMINAL
0571008	FUSEHOLDER (FOR MIDGET TYPE FUSES 1 13/32" - 1 1/2" LONG) SOLDER/QC TERMINALS, RIGHT ANGLE BOTTOM TERMINAL
0571027	FUSEHOLDER (FOR MIDGET TYPE FUSES 1 5/16" - 1 3/8" LONG) SOLDER/QC TERMINALS, STRAIGHT BOTTOM TERMINAL
0571028	FUSEHOLDER (FOR MIDGET TYPE FUSES 1 5/16" - 1 3/8" LONG) SOLDER/QC TERMINALS, RIGHT ANGLE BOTTOM TERMINAL
05710CC	FUSEHOLDER (FOR CLASS CC TYPE FUSES 1-1/2" LONG W/REJECTION FEATURE) SOLDER/QC TERMINALS, STRAIGHT BOTTOM TERMINAL.
0571RCC	FUSEHOLDER (FOR CLASS CC TYPE FUSES 1-1/2" LONG W/REJECTION FEATURE) SOLDER/QC TERMINAL, RIGHT ANGLE BOTTOM TERMINAL.
05710__A	FUSEHOLDER INDIVIDUALLY BAGGED
05710__P	INCLUDES 2 O-RINGS FOR WATERTIGHT SEAL PER MIL-F-19207
05710__L	FUSEHOLDER W/INSULATED BOOT AND 12" LONG WIRE LEADS FOR IN-LINE MOUNTING.
	OR ANY COMBINATION THEREOF

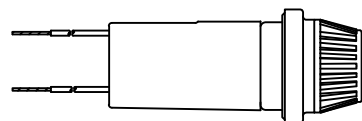
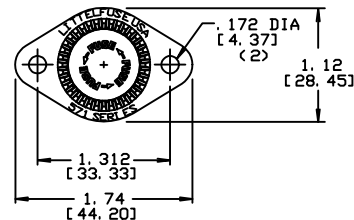
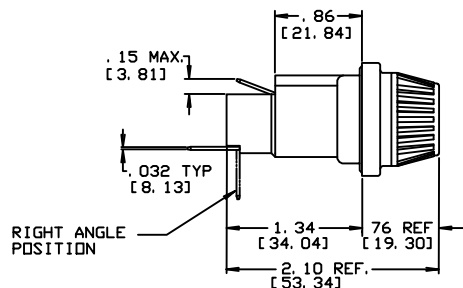
LTR	DATE	REVISION	CHK	APD
F	10/9/97	38682C - REVISE & REDRAWN IN NEW STRUCTURE	KAM	
G	1/24/19	520336ECP/D - ADD LEADED VERSION DETAIL MRY		



2 MTG. HOLES FOR NO. 8 SCREWS



SUGGESTED MOUNTING HOLE



FUSEHOLDER W/ WIRE LEADS & BOOT

**NOTES:**

- METRIC DIM'S ARE SHOWN IN BRACKETS, [ ].
- MATERIALS:**  
 BODY: BLACK THERMOPLASTIC  
 TERMINALS: BRASS, TIN PLATED  
 KNOB: BLACK THERMOSET PLASTIC  
 KNOB INSERT: BRASS, NICKEL PLATED  
 SPRING: STAINLESS STEEL, COPPER PLATED  
 O-RINGS: BUNA N RUBBER
- APPROVALS:**



NO	COMPONENT NO	DESCRIPTION	QTY/M	U/M
2				
1				

**BILL OF MATERIAL**

UNLESS OTHERWISE SPECIFIED, DIMENSIONS DO NOT INCLUDE PLATING.			
●	DENOTES CRITICAL CHARACTERISTICS.		
CPK	DENOTES CPK DIMENSIONS, -MINIMUM CPK VALUE		
(ST)	DENOTES A CHARACTERISTIC THAT PROVIDES AN INDICATION OF PROCESS PERFORMANCE. PROCEDURE FOR MEASUREMENT AND TRACKING TO BE DEFINED IN LITTELFUSE INSPECTION INSTRUCTIONS.		
CP	DENOTES CP DIMENSIONS, -MINIMUM CP VALUE MUST BE WITHIN THE DIMENSIONAL LIMITATIONS SHOWN ON DRAWING AND INITIALLY LOCATED TO ALLOW FOR MAXIMUM TOOL LIFE.		
COPIES TO	MATERIAL SPEC		
1 9 18	FINISH		
2 10 19			
3 12 20			
4 13 21	DRW	KAM	DATE 9/22/97 SCALE 1:1
5 14 23	CHK		DATE SUPER DR
6 15 33	APPD		DATE RAW STK VT
7 16 43			
8 17 53			
TOLERANCE UNLESS OTHERWISE SPECIFIED TWO PLACE DEC ±.01 FRACTION ± THREE PLACE DEC ±.005 ANGULAR ±1°			
TITLE			
MIDGET CLASS CC FUSE FUSEHOLDER			



REVISION: G

FORMAL NO: 0571000 OUTLINE SERIES

CAD GENERATED DRAWING - NO PENCIL CHANGES ALLOWED