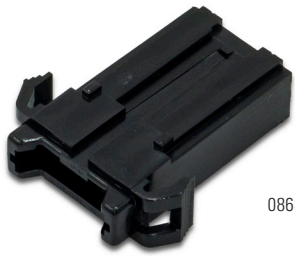


ATO® 155 SERIES

32V STACKABLE IN-LINE PANEL-MOUNT FUSE HOLDER WITH LOOPED WIRE LEADS



08680062H

Description

The ATO® 155 Series 32V Stackable In-Line Panel-Mount Fuse Holder with Looped Wire Leads makes it simple to install an ATO® or FKS blade-style automotive fuse (sold separately unless indicated).

Configurations with black 14 AWG leads are compatible with fuses up to 20 amps, while models of the panel-mount fuse holder with orange 10 AWG leads accept fuses up to 30 amps.

The stackable fuse holder can also be used with additional ATO® 155 Series fuse holders to create a fuse block for multiple fuses.

Web Resources

Download 2D print, installation guide and technical resources at: littelfuse.com/ATO155

Ordering Information

| PART NUMBER | DESCRIPTION | FUSE TYPE | MOUNTING METHOD | MAX CURRENT RATING | MAX VOLTAGE RATING |
|-------------------------|---|-----------|---------------------|--------------------|--------------------|
| 01550300LXN, W/O Fuse | 32V Stackable In-Line Panel-Mount Fuse Holder with Black 14 AWG Looped Wire Leads | ATO | IN LINE FUSE HOLDER | 20 Amps | 32V |
| 01550310ZXA, W/FUSE 10A | 32V Stackable In-Line Panel-Mount Fuse Holder with Black 14 AWG Looped Wire Leads and 10A Fuse | ATO | IN LINE FUSE HOLDER | 10Amps | 32V |
| 01550320ZXA, W/FUSE 20A | 32V Stackable In-Line Panel-Mount Fuse Holder with Black 14 AWG Looped Wire Leads and 20A Fuse | ATO | IN LINE FUSE HOLDER | 20Amps | 32V |
| 01550320ZXU, W/O Fuse | 32V Stackable In-Line Panel-Mount Fuse Holder with Terminals for 14 AWG Wire | ATO | IN LINE FUSE HOLDER | 20 Amps | 32V |
| 01550400Z, W/O Fuse | 32V Stackable In-Line Panel-Mount Fuse Holder with Orange 10 AWG Looped Wire Leads | ATO | IN LINE FUSE HOLDER | 30 Amps | 32V |
| 01550430ZXA, W/FUSE 30A | 32V Stackable In-Line Panel-Mount Fuse Holder with Orange 10 AWG Looped Wire Leads and 30A Fuse | ATO | IN LINE FUSE HOLDER | 30Amps | 32V |
| 01550430ZXU, W/O Fuse | 32V Stackable In-Line Panel-Mount Fuse Holder with Terminals for 10 AWG Wire | ATO | IN LINE FUSE HOLDER | 30 Amps | 32V |
| 08680062H, W/O Fuse | 32V Stackable In-Line Panel-Mount Fuse Holder Body | ATO | IN LINE FUSE HOLDER | N/A | N/A |
| 01550300Z, W/O Fuse | 32V Stackable In-Line Panel-Mount Fuse Holder with Black 14 AWG Looped Wire Leads | ATO | IN LINE FUSE HOLDER | 20 Amps | 32V |
| 868-062-000UL, W/O Fuse | 32V Stackable In-Line Panel-Mount Fuse Holder UL Body | ATO | IN LINE FUSE HOLDER | N/A | N/A |
| 913-008 | Crimp Terminal with Insulation Grip - 14 Gauge, Reel | N/A | CRIMPED | N/A | N/A |
| 913-008-001 | Crimp Terminal with Insulation Grip - 14 Gauge | N/A | CRIMPED | N/A | N/A |
| 913-008-R | Crimp Terminal with Insulation Grip - 14 Gauge, Reverse Reel | N/A | CRIMPED | N/A | N/A |
| 868-062-000, W/O Fuse | 32V Stackable In-Line Panel-Mount Fuse Holder Body | ATO | IN LINE FUSE HOLDER | N/A | N/A |
| 913-007 | Crimp Terminal with Insulation Grip - 10 Gauge, Reel | N/A | CRIMPED | N/A | N/A |
| 913-007-001 | Crimp Terminal with Insulation Grip - 10 Gauge | N/A | CRIMPED | N/A | N/A |
| 01550400LXN W/O Fuse | 32V Stackable In-Line Panel-Mount Fuse Holder with Orange 10 AWG Looped Wire Leads | ATO | IN LINE FUSE HOLDER | 30 Amps | 32V |

Specifications

| | |
|----------------------------|---------------------------|
| Max Current Rating: | 30 Amps, 20 Amps, 10 Amps |
| Fuse Type: | ATO® |
| Mounting Method: | IN LINE FUSE HOLDER |
| Max Voltage Rating: | 32 V |

Applications

- Automotive
- Electronics
- Small Auxiliary Circuit Protection

Features and Benefits

- Accepts ATO® or FKS blade fuses (sold separately unless indicated) up to 20 amps or 30 amps
- Configurations available with either black 14 AWG leads or orange 10 AWG leads to suit different applications
- Stackable fuse holder body can be paired with additional ATO® 155 Series fuse holders to create a multi-fuse block
- Various fuse holder component parts are also available separately, including the body, UL body, and crimp terminals for the different wire gauges