

Distributed Gate Thyristors

IXYS UK Westcode Ltd is recognised as the worldwide leader in distributed gate technology.

These devices are available with blocking voltages to 4.5kV, average current to 4kA, and t_q from 10 to 300 μ s. The distributed gate design and lifetime control features give these devices both high di/dt capability and fast, low recovery turn-off, while maintaining a low on-state voltage drop. Ideally suited to applications including: induction power supplies, high frequency inverters/converters, resonant power supplies and pulsed power.



Applications

- Induction power supplies for:
 - Melting
 - Billet heating
 - Surface conditioning
- Resonant power supplies
- Pulsed power

Features and benefits

- High average current ratings
- Low thermal resistance
- Double side cooling
- Optimised parts have higher surge current rating and enhanced mechanical design for maximum power to package ratio
- Industry standard, fully hermetic packages
- Suitable for applications up to 20kHz



New products for 2017

As part of IXYS UK's program of continuous improvement, we are proud to introduce four new distributed gate thyristors to our line up for 2017.

These new products are available with electrode diameters ranging from 47mm to 85mm, Voltage ratings from 1800V to 2800V and Average current ratings from 1055A to 5370A.



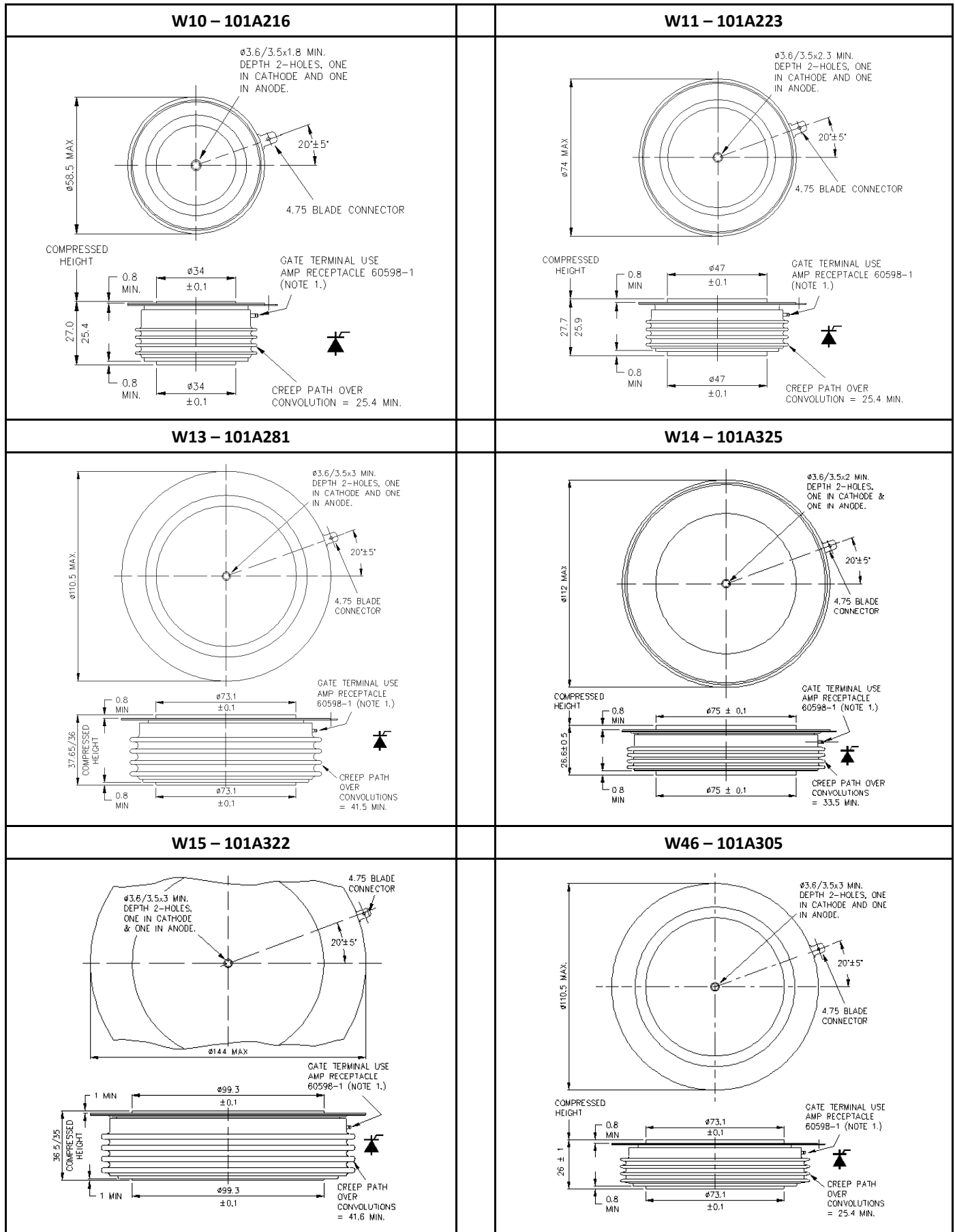
These devices are constructed using an all diffused silicon slice, fused to a metal disc, encapsulated in industry standard packages offering higher current density and improved turn-off characteristics. The thermal capacity of the metal disc and its direct fusion to the silicon slice enhances performance, presenting excellent transient thermal characteristics and higher surge current ratings.

| Part No. | V _{DRM} | V _{RRM} | I _{TAV} T _k =55°C | I _{TSM} | I ² t 10ms 1/2 sine V _R - ≤ 60% V _{RRM} | t _q @ 200V/μs | Typ. Reverse Recovery Charge | | | V _{T0} | r _T | T _{JM} | R _{thJK} 180° Sine | Fig. No. |
|--------------|------------------|------------------|--|------------------|--|--------------------------------|------------------------------|------------------------|------------------|-----------------|----------------|-----------------|-----------------------------------|----------|
| | V | V | A | A | A ² s | μs | Q _{rr} μC | @ I _{TM} A | @ -di/dt A/μs | V | mΩ | °C | K/W | |
| R1045NC28L | 2800 | 2800 | 1055 | 12500 | 781 x 10 ³ | 60 | 950 | 1000 | 60 | 1.640 | 0.430 | 125 | 0.0240 | W11 |
| R1045NC28M | 2800 | 2800 | 1055 | 12500 | 781 x 10 ³ | 70 | 950 | 1000 | 60 | 1.640 | 0.430 | 125 | 0.0240 | W11 |
| R1045NC32L | 3200 | 3200 | 1055 | 12500 | 781 x 10 ³ | 60 | 950 | 1000 | 60 | 1.640 | 0.430 | 125 | 0.0240 | W11 |
| R1045NC28M | 3200 | 3200 | 1055 | 12500 | 781 x 10 ³ | 70 | 950 | 1000 | 60 | 1.640 | 0.430 | 125 | 0.0240 | W11 |
| R2295HA22F | 2200 | 2200 | 2295 | 30000 | 4.50 x 10 ⁶ | 30 | 875 | 1000 | 60 | 1.690 | 0.190 | 125 | 0.0110 | W79 |
| R2295HA22H | 2200 | 2200 | 2295 | 30000 | 4.50 x 10 ⁶ | 40 | 875 | 1000 | 60 | 1.690 | 0.190 | 125 | 0.0110 | W79 |
| R3115TJ24J # | 2800 | 2400 | 3115 | 56000 | 15.68 x 10 ⁶ | 50 | 3350 | 2000 | 60 | 1.884 | 0.120 | 125 | 0.0080 | W81 |
| R3115TJ24K # | 2800 | 2400 | 3115 | 56000 | 15.68 x 10 ⁶ | 60 | 3350 | 2000 | 60 | 1.884 | 0.120 | 125 | 0.0080 | W81 |
| R3115TJ28J # | 2800 | 2800 | 3115 | 56000 | 15.68 x 10 ⁶ | 50 | 3350 | 2000 | 60 | 1.884 | 0.120 | 125 | 0.0080 | W81 |
| R3115TJ28K # | 2800 | 2800 | 3115 | 56000 | 15.68 x 10 ⁶ | 60 | 3350 | 2000 | 60 | 1.884 | 0.120 | 125 | 0.0080 | W81 |
| R5370EA18J # | 1800 | 1800 | 5370 | 70000 | 24.5 x 10 ⁶ | 50 | 3000 | 1000 | 60 | 1.661 | 0.071 | 125 | 0.0050 | W107 |
| R5370EA18K # | 1800 | 1800 | 5370 | 70000 | 24.5 x 10 ⁶ | 60 | 3000 | 1000 | 60 | 1.661 | 0.071 | 125 | 0.0050 | W107 |
| R5370EA22J # | 2200 | 2200 | 5370 | 70000 | 24.5 x 10 ⁶ | 50 | 3000 | 1000 | 60 | 1.661 | 0.071 | 125 | 0.0050 | W107 |
| R5370EA22K # | 2200 | 2200 | 5370 | 70000 | 24.5 x 10 ⁶ | 60 | 3000 | 1000 | 60 | 1.661 | 0.071 | 125 | 0.0050 | W107 |

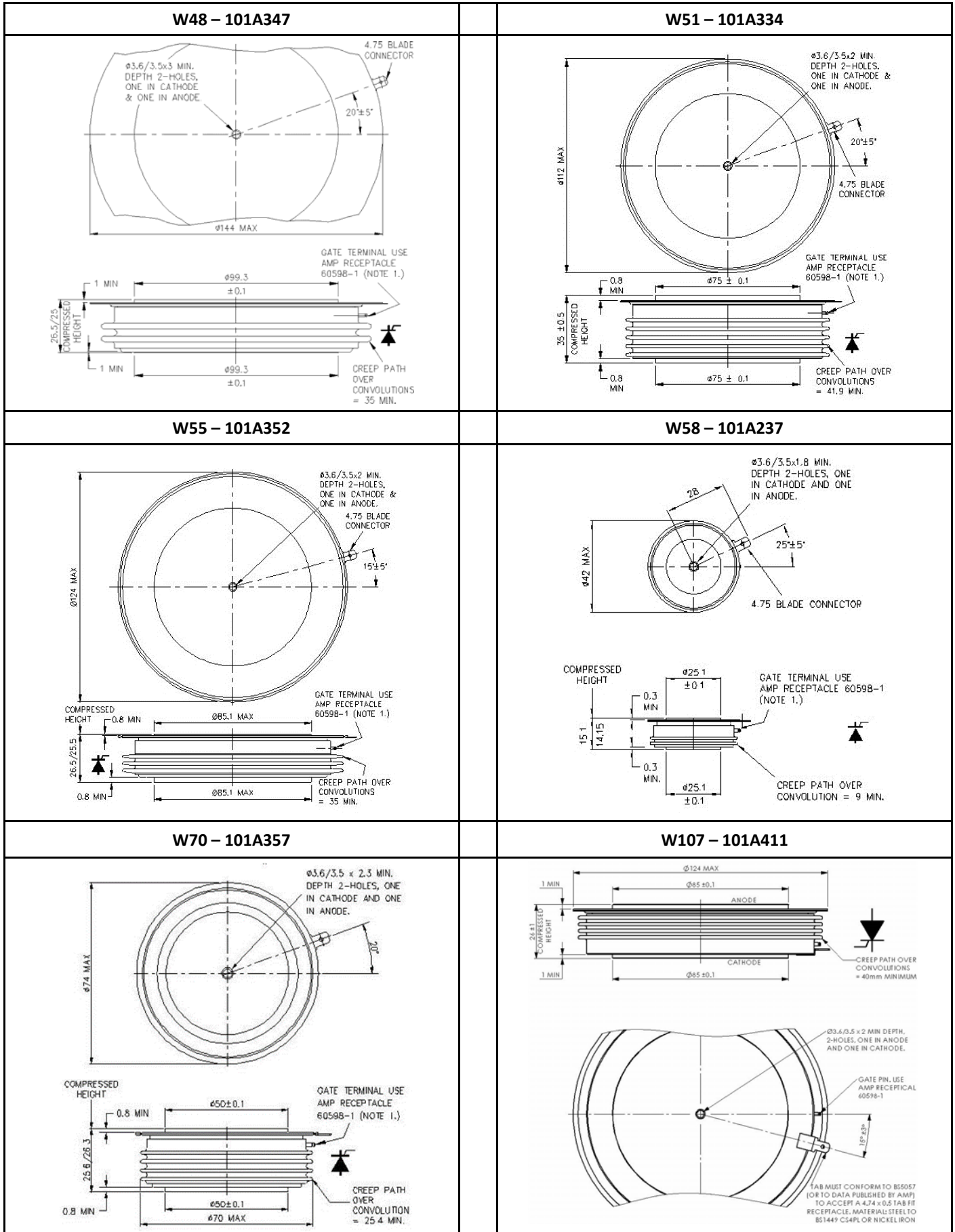
- New bonded designs for improved thermal performance.

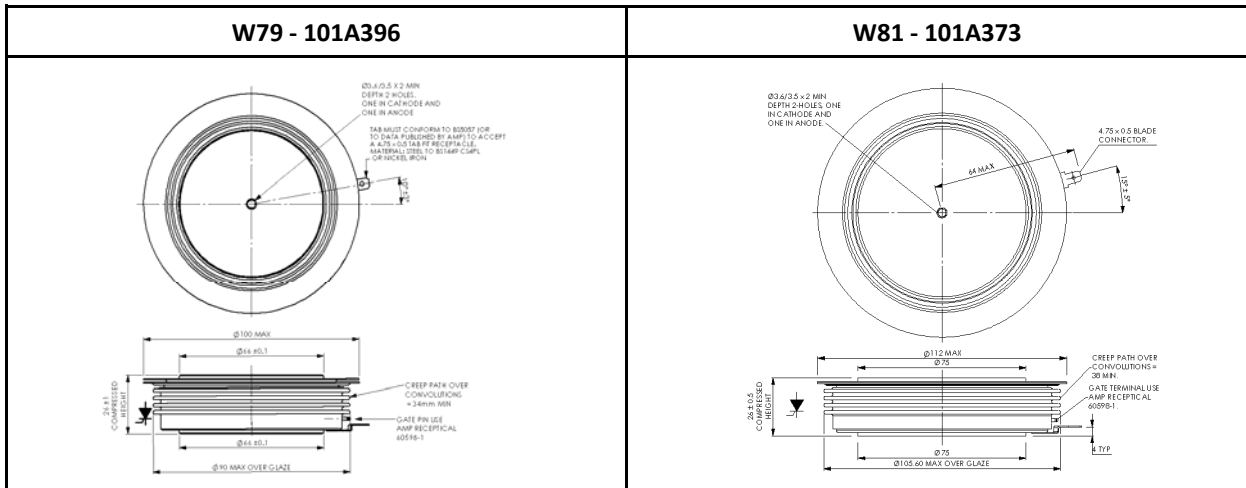
| Part No. | V _{DRM} V | V _{RRM} V | I _{TAV} A T _K =55°C | I _{TSM} A | I ² t 10ms 1/2 sine A ² s V _R - ≤ 60% V _{RRM} | t _q @ 200V/μs μs | Typ. Reverse Recovery Charge | | | V _{TO} V | r _T mΩ @T _{JM} | T _{JM} °C | R _{thJK} 180° Sine K/W | Fig. No. |
|------------|-----------------------|-----------------------|---|-----------------------|--|--------------------------------------|------------------------------|------------------------|------------------|----------------------|--|-----------------------|--|----------|
| | | | | | | | Q _{rr} μC | @ I _{TM} A | @ -di/dt A/μs | | | | | |
| R1124NC18J | 1800 | 1800 | 1124 | 13500 | 0.91 x 10 ⁶ | 50 | 640 | 1000 | 60 | 1.540 | 0.379 | 125 | 0.0240 | W11 |
| R1124NC18K | 1800 | 1800 | 1124 | 13500 | 0.91 x 10 ⁶ | 60 | 640 | 1000 | 60 | 1.540 | 0.379 | 125 | 0.0240 | W11 |
| R1124NC18L | 1800 | 1800 | 1124 | 13500 | 0.91 x 10 ⁶ | 65 | 640 | 1000 | 60 | 1.540 | 0.379 | 125 | 0.0240 | W11 |
| R1124NC18M | 1800 | 1800 | 1124 | 13500 | 0.91 x 10 ⁶ | 70 | 640 | 1000 | 60 | 1.540 | 0.379 | 125 | 0.0240 | W11 |
| R1124NC20J | 2000 | 1800 | 1124 | 13500 | 0.91 x 10 ⁶ | 50 | 640 | 1000 | 60 | 1.540 | 0.379 | 125 | 0.0240 | W11 |
| R1124NC20K | 2000 | 1800 | 1124 | 13500 | 0.91 x 10 ⁶ | 60 | 640 | 1000 | 60 | 1.540 | 0.379 | 125 | 0.0240 | W11 |
| R1124NC20L | 2000 | 1800 | 1124 | 13500 | 0.91 x 10 ⁶ | 65 | 640 | 1000 | 60 | 1.540 | 0.379 | 125 | 0.0240 | W11 |
| R1124NC20M | 2000 | 1800 | 1124 | 13500 | 0.91 x 10 ⁶ | 70 | 640 | 1000 | 60 | 1.540 | 0.379 | 125 | 0.0240 | W11 |
| R1124NC21J | 2100 | 1800 | 1124 | 13500 | 0.91 x 10 ⁶ | 50 | 640 | 1000 | 60 | 1.540 | 0.379 | 125 | 0.0240 | W11 |
| R1124NC21K | 2100 | 1800 | 1124 | 13500 | 0.91 x 10 ⁶ | 60 | 640 | 1000 | 60 | 1.540 | 0.379 | 125 | 0.0240 | W11 |
| R1124NC21L | 2100 | 1800 | 1124 | 13500 | 0.91 x 10 ⁶ | 65 | 640 | 1000 | 60 | 1.540 | 0.379 | 125 | 0.0240 | W11 |
| R1124NC21M | 2100 | 1800 | 1124 | 13500 | 0.91 x 10 ⁶ | 70 | 640 | 1000 | 60 | 1.540 | 0.379 | 125 | 0.0240 | W11 |
| R1127NC32P | 3200 | 3200 | 1127 | 12800 | 819 x 10 ³ | 120 | 3500 | 1000 | 60 | 1.500 | 0.474 | 125 | 0.0220 | W11 |
| R1127NC32R | 3200 | 3200 | 1127 | 12800 | 819 x 10 ³ | 140 | 3500 | 1000 | 60 | 1.500 | 0.474 | 125 | 0.0220 | W11 |
| R1127NC32S | 3200 | 3200 | 1127 | 12800 | 819 x 10 ³ | 160 | 3500 | 1000 | 60 | 1.500 | 0.474 | 125 | 0.0220 | W11 |
| R1127NC32T | 3200 | 3200 | 1127 | 12800 | 819 x 10 ³ | 200 | 3500 | 1000 | 60 | 1.500 | 0.474 | 125 | 0.0220 | W11 |
| R1127NC34R | 3400 | 3400 | 1127 | 12800 | 819 x 10 ³ | 140 | 3500 | 1000 | 60 | 1.500 | 0.474 | 125 | 0.0220 | W11 |
| R1127NC34S | 3400 | 3400 | 1127 | 12800 | 819 x 10 ³ | 160 | 3500 | 1000 | 60 | 1.500 | 0.474 | 125 | 0.0220 | W11 |
| R1127NC34T | 3400 | 3400 | 1127 | 12800 | 819 x 10 ³ | 200 | 3500 | 1000 | 60 | 1.500 | 0.474 | 125 | 0.0220 | W11 |
| R1127NC36R | 3600 | 3600 | 1127 | 12800 | 819 x 10 ³ | 140 | 3500 | 1000 | 60 | 1.500 | 0.474 | 125 | 0.0220 | W11 |
| R1127NC36S | 3600 | 3600 | 1127 | 12800 | 819 x 10 ³ | 160 | 3500 | 1000 | 60 | 1.500 | 0.474 | 125 | 0.0220 | W11 |
| R1127NC36T | 3600 | 3600 | 1127 | 12800 | 819 x 10 ³ | 200 | 3500 | 1000 | 60 | 1.500 | 0.474 | 125 | 0.0220 | W11 |
| R1158NC26N | 2600 | 2600 | 1158 | 14500 | 1.05 x 10 ⁶ | 100 | 1600 | 1000 | 60 | 1.600 | 0.400 | 125 | 0.0220 | W11 |
| R1158NC26P | 2600 | 2600 | 1158 | 14500 | 1.05 x 10 ⁶ | 120 | 1600 | 1000 | 60 | 1.600 | 0.400 | 125 | 0.0220 | W11 |
| R1158NC26T | 2600 | 2600 | 1158 | 14500 | 1.05 x 10 ⁶ | 200 | 1600 | 1000 | 60 | 1.600 | 0.400 | 125 | 0.0220 | W11 |
| R1178NC14E | 1400 | 1400 | 1178 | 17000 | 1.45 x 10 ⁶ | 25 | 320 | 1000 | 60 | 1.600 | 0.300 | 125 | 0.0240 | W11 |
| R1178NC14F | 1400 | 1400 | 1178 | 17000 | 1.45 x 10 ⁶ | 30 | 320 | 1000 | 60 | 1.600 | 0.300 | 125 | 0.0240 | W11 |
| R1178NC14G | 1400 | 1400 | 1178 | 17000 | 1.45 x 10 ⁶ | 35 | 320 | 1000 | 60 | 1.600 | 0.300 | 125 | 0.0240 | W11 |
| R1211NC12C | 1200 | 1200 | 1211 | 17600 | 1.548 x 10 ⁶ | 15 | 230 | 1000 | 60 | 1.720 | 0.230 | 125 | 0.0240 | W11 |
| R1211NC12D | 1200 | 1200 | 1211 | 17600 | 1.548 x 10 ⁶ | 20 | 230 | 1000 | 60 | 1.720 | 0.230 | 125 | 0.0240 | W11 |
| R1211NC12E | 1200 | 1200 | 1211 | 17600 | 1.548 x 10 ⁶ | 25 | 230 | 1000 | 60 | 1.720 | 0.230 | 125 | 0.0240 | W11 |
| R1271NC12B | 1200 | 1200 | 1271 | 18000 | 1.62 x 10 ⁶ | 12 | 200 | 1000 | 60 | 1.547 | 0.237 | 125 | 0.0240 | W11 |
| R1271NC12C | 1200 | 1200 | 1271 | 18000 | 1.62 x 10 ⁶ | 15 | 200 | 1000 | 60 | 1.547 | 0.237 | 125 | 0.0240 | W11 |
| R1271NC12D | 1200 | 1200 | 1271 | 18000 | 1.62 x 10 ⁶ | 20 | 200 | 1000 | 60 | 1.547 | 0.237 | 125 | 0.0240 | W11 |
| R1271NC12E | 1200 | 1200 | 1271 | 18000 | 1.62 x 10 ⁶ | 25 | 200 | 1000 | 60 | 1.547 | 0.237 | 125 | 0.0240 | W11 |
| R1275NC18J | 1800 | 1800 | 1275 | 15500 | 1.20 x 10 ⁶ | 50 | 940 | 1000 | 60 | 1.207 | 0.342 | 125 | 0.0240 | W11 |
| R1275NC18K | 1800 | 1800 | 1275 | 15500 | 1.20 x 10 ⁶ | 60 | 940 | 1000 | 60 | 1.207 | 0.342 | 125 | 0.0240 | W11 |
| R1275NC18L | 1800 | 1800 | 1275 | 15500 | 1.20 x 10 ⁶ | 65 | 940 | 1000 | 60 | 1.207 | 0.342 | 125 | 0.0240 | W11 |
| R1275NC18M | 1800 | 1800 | 1275 | 15500 | 1.20 x 10 ⁶ | 70 | 940 | 1000 | 60 | 1.207 | 0.342 | 125 | 0.0240 | W11 |
| R1275NC20J | 2000 | 1800 | 1275 | 15500 | 1.20 x 10 ⁶ | 50 | 940 | 1000 | 60 | 1.207 | 0.342 | 125 | 0.0240 | W11 |
| R1275NC20K | 2000 | 1800 | 1275 | 15500 | 1.20 x 10 ⁶ | 60 | 940 | 1000 | 60 | 1.207 | 0.342 | 125 | 0.0240 | W11 |
| R1275NC20L | 2000 | 1800 | 1275 | 15500 | 1.20 x 10 ⁶ | 65 | 940 | 1000 | 60 | 1.207 | 0.342 | 125 | 0.0240 | W11 |
| R1275NC20M | 2000 | 1800 | 1275 | 15500 | 1.20 x 10 ⁶ | 70 | 940 | 1000 | 60 | 1.207 | 0.342 | 125 | 0.0240 | W11 |
| R1275NC21J | 2100 | 1800 | 1275 | 15500 | 1.20 x 10 ⁶ | 50 | 940 | 1000 | 60 | 1.207 | 0.342 | 125 | 0.0240 | W11 |
| R1275NC21K | 2100 | 1800 | 1275 | 15500 | 1.20 x 10 ⁶ | 60 | 940 | 1000 | 60 | 1.207 | 0.342 | 125 | 0.0240 | W11 |
| R1275NC21L | 2100 | 1800 | 1275 | 15500 | 1.20 x 10 ⁶ | 65 | 940 | 1000 | 60 | 1.207 | 0.342 | 125 | 0.0240 | W11 |
| R1275NC21M | 2100 | 1800 | 1275 | 15500 | 1.20 x 10 ⁶ | 70 | 940 | 1000 | 60 | 1.207 | 0.342 | 125 | 0.0240 | W11 |
| R1279NC22J | 2200 | 2200 | 1279 | 14800 | 1.10 x 10 ⁶ | 50 | 1250 | 1000 | 60 | 1.440 | 0.330 | 125 | 0.0220 | W11 |
| R1279NC22K | 2200 | 2200 | 1279 | 14800 | 1.10 x 10 ⁶ | 60 | 1250 | 1000 | 60 | 1.440 | 0.330 | 125 | 0.0220 | W11 |
| R1279NC22L | 2200 | 2200 | 1279 | 14800 | 1.10 x 10 ⁶ | 65 | 1250 | 1000 | 60 | 1.440 | 0.330 | 125 | 0.0220 | W11 |
| R1279NC22M | 2200 | 2200 | 1279 | 14800 | 1.10 x 10 ⁶ | 70 | 1250 | 1000 | 60 | 1.440 | 0.330 | 125 | 0.0220 | W11 |
| R1279NC25J | 2500 | 2500 | 1279 | 14800 | 1.10 x 10 ⁶ | 50 | 1250 | 1000 | 60 | 1.440 | 0.330 | 125 | 0.0220 | W11 |
| R1279NC25K | 2500 | 2500 | 1279 | 14800 | 1.10 x 10 ⁶ | 60 | 1250 | 1000 | 60 | 1.440 | 0.330 | 125 | 0.0220 | W11 |
| R1279NC25L | 2500 | 2500 | 1279 | 14800 | 1.10 x 10 ⁶ | 65 | 1250 | 1000 | 60 | 1.440 | 0.330 | 125 | 0.0220 | W11 |
| R1279NC25M | 2500 | 2500 | 1279 | 14800 | 1.10 x 10 ⁶ | 70 | 1250 | 1000 | 60 | 1.440 | 0.330 | 125 | 0.0220 | W11 |
| R1280NC21J | 2100 | 2100 | 1280 | 14800 | 1.10 x 10 ⁶ | 50 | 1200 | 1000 | 60 | 1.440 | 0.330 | 125 | 0.0220 | W11 |
| R1280NC21K | 2100 | 2100 | 1280 | 14800 | 1.10 x 10 ⁶ | 60 | 1200 | 1000 | 60 | 1.440 | 0.330 | 125 | 0.0220 | W11 |
| R1280NC21L | 2100 | 2100 | 1280 | 14800 | 1.10 x 10 ⁶ | 65 | 1200 | 1000 | 60 | 1.440 | 0.330 | 125 | 0.0220 | W11 |
| R1280NC21M | 2100 | 2100 | 1280 | 14800 | 1.10 x 10 ⁶ | 70 | 1200 | 1000 | 60 | 1.440 | 0.330 | 125 | 0.0220 | W11 |

Outlines



Outlines



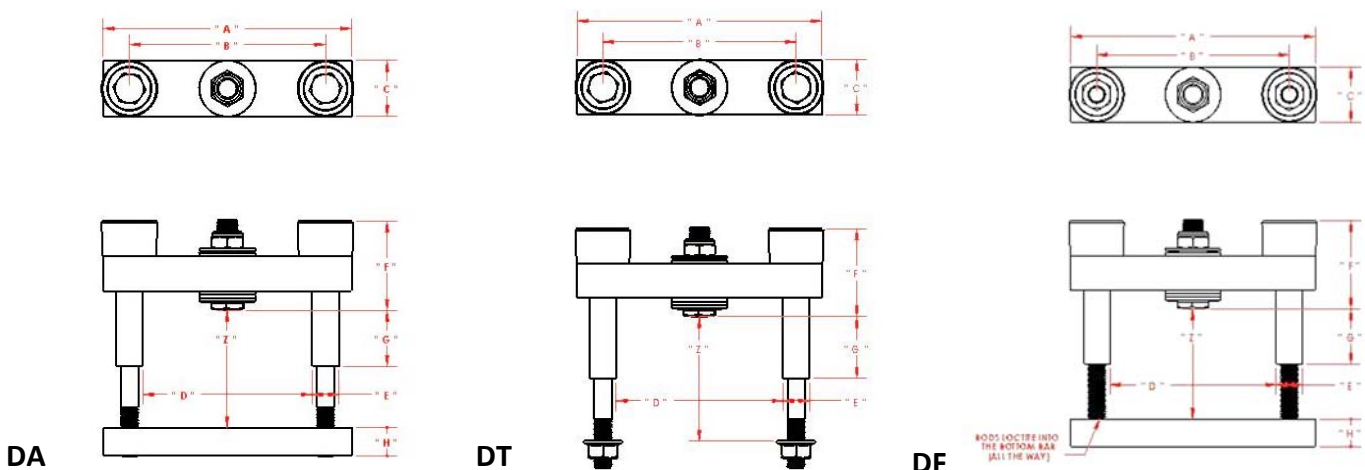


Recommended clamps for Distributed gate thyristors

IXYS UK offers a diverse range of clamping option for its semiconductors. The clamps listed below are selected as ideal choices to complement each phase control thyristor based on its outline dimensions' and recommended clamped pressure range

| Housing code | Drawing number | Electrode diameter (mm) | Max. capsule height (mm) | Recommended clamp | Figure |
|--------------|----------------|-------------------------|--------------------------|-------------------|--------|
| YC | W58 | 25.1 | 15.1 | XSK0900D#042Mxxx | A |
| LC | W10 | 34 | 27 | XSK1500D#065Mxxx | A |
| NC | W11 | 47 | 27.7 | XSK2200D#075Mxxx | A |
| MC | W70 | 50 | 26.3 | XSK3000D#087Mxxx | A |
| HA | W79 | 66 | 26.5 | XSK3800DA116Mxxx | B |
| ZC | W13 | 73.1 | 37.65 | XSK3800DA116Mxxx | B |
| ZD | W46 | 73.1 | 27 | XSK3800DA116Mxxx | B |
| TC | W14 | 75 | 27.1 | XK7000DA128ML | C |
| TD | W51 | 75 | 35.5 | XK7000DA128ML | C |
| TJ | W81 | 75 | 26.5 | XK7000DA128ML | C |
| EA | W107 | 85 | 26 | XK9000D/SA160M | D |
| EC | W55 | 85.1 | 26.5 | XK7000DA128ML | C |
| FC | W15 | 99.3 | 36.5 | XK9000D/SA160M | D |
| FD | W48 | 99.3 | 26 | XK9000D/SA160M | D |

Figure A



| Part #'s | A | B | C | D | E | F | G | H | " Z " min | " Z " max | Bolt Type |
|-----------------------|-------|-------|-------|-------|------|-------|-------|-------|-----------|-----------|-----------|
| XSK 0900 xx 042 M 025 | 69.85 | 54.00 | 15.88 | 45.00 | 8.64 | 32.00 | 14.98 | 12.70 | 19.05 | 25.40 | M6 |
| XSK 0900 xx 042 M 031 | 69.85 | 54.00 | 15.88 | 45.00 | 8.64 | 32.00 | 14.98 | 12.70 | 25.40 | 31.75 | M6 |
| XSK 0900 xx 042 M 038 | 69.85 | 54.00 | 15.88 | 45.00 | 8.64 | 32.00 | 19.81 | 12.70 | 31.75 | 38.10 | M6 |
| XSK 0900 xx 042 M 044 | 69.85 | 54.00 | 15.88 | 45.00 | 8.64 | 32.00 | 21.84 | 12.70 | 38.10 | 44.45 | M6 |
| XSK 0900 xx 042 M 050 | 69.85 | 54.00 | 15.88 | 45.00 | 8.64 | 32.00 | 24.89 | 12.70 | 44.45 | 50.80 | M6 |
| XSK 0900 xx 042 M 057 | 69.85 | 54.00 | 15.88 | 45.00 | 8.64 | 32.00 | 29.97 | 12.70 | 50.80 | 57.15 | M6 |
| XSK 0900 xx 042 M 063 | 69.85 | 54.00 | 15.88 | 45.00 | 8.64 | 32.00 | 32.00 | 12.70 | 57.15 | 63.50 | M6 |
| XSK 0900 xx 042 M 069 | 69.85 | 54.00 | 15.88 | 45.00 | 8.64 | 32.00 | 34.79 | 12.70 | 63.50 | 69.85 | M6 |
| XSK 0900 xx 042 M 076 | 69.85 | 54.00 | 15.88 | 45.00 | 8.64 | 32.00 | 39.87 | 12.70 | 69.85 | 76.20 | M6 |

| Part #'s | A | B | C | D | E | F | G | H | " Z " min | " Z " max | Bolt Type |
|-----------------------|--------|-------|-------|-------|-------|-------|-------|-------|-----------|-----------|-----------|
| XSK 1500 xx 065 M 038 | 104.39 | 79.00 | 25.40 | 65.00 | 12.19 | 48.48 | 25.65 | 12.70 | 31.75 | 38.10 | M8 |
| XSK 1500 xx 065 M 044 | 104.39 | 79.00 | 25.40 | 65.00 | 12.19 | 48.48 | 28.70 | 12.70 | 38.10 | 44.45 | M8 |
| XSK 1500 xx 065 M 057 | 104.39 | 79.00 | 25.40 | 65.00 | 12.19 | 48.48 | 35.81 | 12.70 | 50.80 | 57.15 | M8 |
| XSK 1500 xx 065 M 063 | 104.39 | 79.00 | 25.40 | 65.00 | 12.19 | 48.48 | 38.60 | 12.70 | 57.15 | 63.50 | M8 |
| XSK 1500 xx 065 M 076 | 104.39 | 79.00 | 25.40 | 65.00 | 12.19 | 48.48 | 43.68 | 12.70 | 69.85 | 76.20 | M8 |
| XSK 1500 xx 065 M 082 | 104.39 | 79.00 | 25.40 | 65.00 | 12.19 | 48.48 | 46.73 | 12.70 | 76.20 | 82.55 | M8 |
| XSK 1500 xx 065 M 088 | 104.39 | 79.00 | 25.40 | 65.00 | 12.19 | 48.48 | 49.78 | 12.70 | 82.55 | 88.90 | M8 |
| XSK 1500 xx 065 M 095 | 104.39 | 79.00 | 25.40 | 65.00 | 12.19 | 48.48 | 52.57 | 12.70 | 88.90 | 95.25 | M8 |
| XSK 1500 xx 065 M 101 | 104.39 | 79.00 | 25.40 | 65.00 | 12.19 | 48.48 | 55.62 | 12.70 | 95.25 | 101.60 | M8 |
| XSK 1500 xx 065 M 107 | 104.39 | 79.00 | 25.40 | 65.00 | 12.19 | 48.48 | 58.67 | 12.70 | 101.60 | 107.95 | M8 |
| XSK 1500 xx 065 M 114 | 104.39 | 79.00 | 25.40 | 65.00 | 12.19 | 48.48 | 61.72 | 12.70 | 107.95 | 114.30 | M8 |
| XSK 1500 xx 065 M 120 | 104.39 | 79.00 | 25.40 | 65.00 | 12.19 | 48.48 | 64.77 | 12.70 | 114.30 | 120.65 | M8 |

| Part #'s | A | B | C | D | E | F | G | H | " Z " min | " Z " max | Bolt Type |
|-----------------------|--------|-------|-------|-------|-------|-------|-------|-------|-----------|-----------|-----------|
| XSK 2200 xx 075 M 038 | 112.78 | 89.00 | 25.40 | 75.00 | 12.19 | 37.37 | 24.63 | 12.70 | 31.75 | 38.10 | M8 |
| XSK 2200 xx 075 M 044 | 112.78 | 89.00 | 25.40 | 75.00 | 12.19 | 37.37 | 27.68 | 12.70 | 38.10 | 44.45 | M8 |
| XSK 2200 xx 075 M 057 | 112.78 | 89.00 | 25.40 | 75.00 | 12.19 | 37.37 | 33.52 | 12.70 | 50.80 | 57.15 | M8 |
| XSK 2200 xx 075 M 063 | 112.78 | 89.00 | 25.40 | 75.00 | 12.19 | 37.37 | 36.57 | 12.70 | 57.15 | 63.50 | M8 |
| XSK 2200 xx 075 M 076 | 112.78 | 89.00 | 25.40 | 75.00 | 12.19 | 37.37 | 41.65 | 12.70 | 69.85 | 76.20 | M8 |
| XSK 2200 xx 075 M 082 | 112.78 | 89.00 | 25.40 | 75.00 | 12.19 | 37.37 | 45.72 | 12.70 | 76.20 | 82.55 | M8 |
| XSK 2200 xx 075 M 088 | 112.78 | 89.00 | 25.40 | 75.00 | 12.19 | 37.37 | 48.51 | 12.70 | 82.55 | 88.90 | M8 |
| XSK 2200 xx 075 M 095 | 112.78 | 89.00 | 25.40 | 75.00 | 12.19 | 37.37 | 51.56 | 12.70 | 88.90 | 95.25 | M8 |
| XSK 2200 xx 075 M 101 | 112.78 | 89.00 | 25.40 | 75.00 | 12.19 | 37.37 | 54.61 | 12.70 | 95.25 | 101.60 | M8 |
| XSK 2200 xx 075 M 107 | 112.78 | 89.00 | 25.40 | 75.00 | 12.19 | 37.37 | 57.65 | 12.70 | 101.60 | 107.95 | M8 |
| XSK 2200 xx 075 M 114 | 112.78 | 89.00 | 25.40 | 75.00 | 12.19 | 37.37 | 60.70 | 12.70 | 107.95 | 114.30 | M8 |
| XSK 2200 xx 075 M 120 | 112.78 | 89.00 | 25.40 | 75.00 | 12.19 | 37.37 | 63.75 | 12.70 | 114.30 | 120.65 | M8 |

| Part #'s | A | B | C | D | E | F | G | H | " Z " min | " Z " max | Bolt Type |
|-----------------------|--------|--------|-------|-------|-------|-------|-------|-------|-----------|-----------|-----------|
| XSK 3000 xx 087 M 038 | 127.00 | 102.00 | 25.40 | 87.00 | 12.18 | 35.79 | 24.63 | 19.05 | 31.75 | 38.10 | M8 |
| XSK 3000 xx 087 M 044 | 127.00 | 102.00 | 25.40 | 87.00 | 12.18 | 35.79 | 27.43 | 19.05 | 38.10 | 44.45 | M8 |
| XSK 3000 xx 087 M 057 | 127.00 | 102.00 | 25.40 | 87.00 | 12.18 | 35.79 | 33.52 | 19.05 | 50.80 | 57.15 | M8 |
| XSK 3000 xx 087 M 063 | 127.00 | 102.00 | 25.40 | 87.00 | 12.18 | 35.79 | 37.59 | 19.05 | 57.15 | 63.50 | M8 |
| XSK 3000 xx 087 M 076 | 127.00 | 102.00 | 25.40 | 87.00 | 12.18 | 35.79 | 43.43 | 19.05 | 69.85 | 76.20 | M8 |
| XSK 3000 xx 087 M 082 | 127.00 | 102.00 | 25.40 | 87.00 | 12.18 | 35.79 | 46.48 | 19.05 | 76.20 | 82.55 | M8 |
| XSK 3000 xx 087 M 088 | 127.00 | 102.00 | 25.40 | 87.00 | 12.18 | 35.79 | 49.53 | 19.05 | 82.55 | 88.90 | M8 |
| XSK 3000 xx 087 M 095 | 127.00 | 102.00 | 25.40 | 87.00 | 12.18 | 35.79 | 52.57 | 19.05 | 88.90 | 95.25 | M8 |
| XSK 3000 xx 087 M 101 | 127.00 | 102.00 | 25.40 | 87.00 | 12.18 | 35.79 | 55.62 | 19.05 | 95.25 | 101.60 | M8 |
| XSK 3000 xx 087 M 107 | 127.00 | 102.00 | 25.40 | 87.00 | 12.18 | 35.79 | 58.42 | 19.05 | 101.60 | 107.95 | M8 |
| XSK 3000 xx 087 M 114 | 127.00 | 102.00 | 25.40 | 87.00 | 12.18 | 35.79 | 61.46 | 19.05 | 107.95 | 114.30 | M8 |
| XSK 3000 xx 087 M 120 | 127.00 | 102.00 | 25.40 | 87.00 | 12.18 | 35.79 | 64.51 | 19.05 | 114.30 | 120.65 | M8 |

Other sizes available on request, please contact factory

Figure B

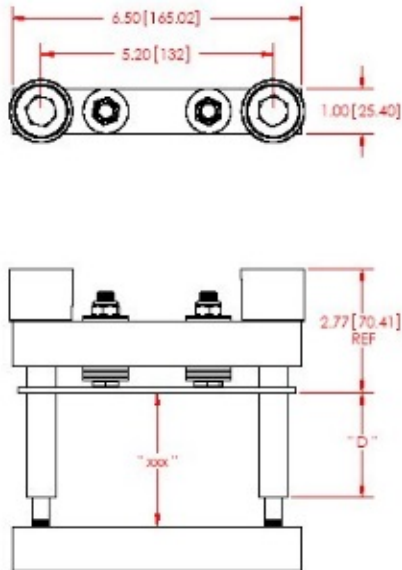
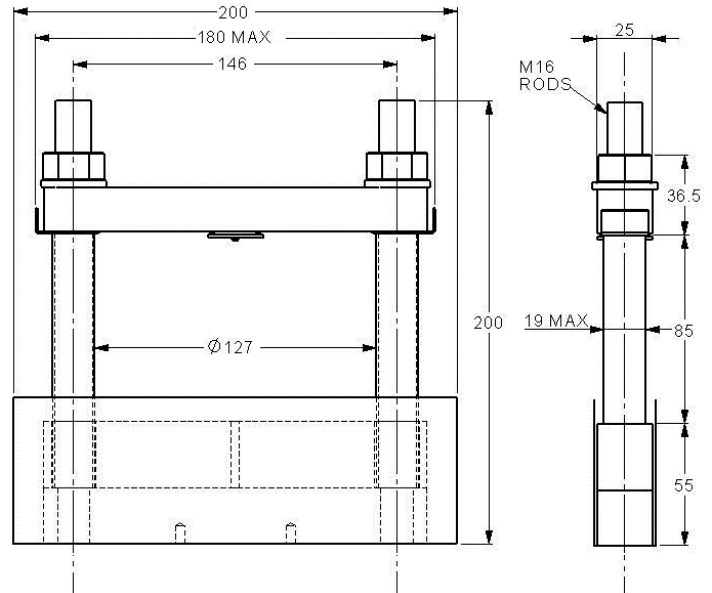


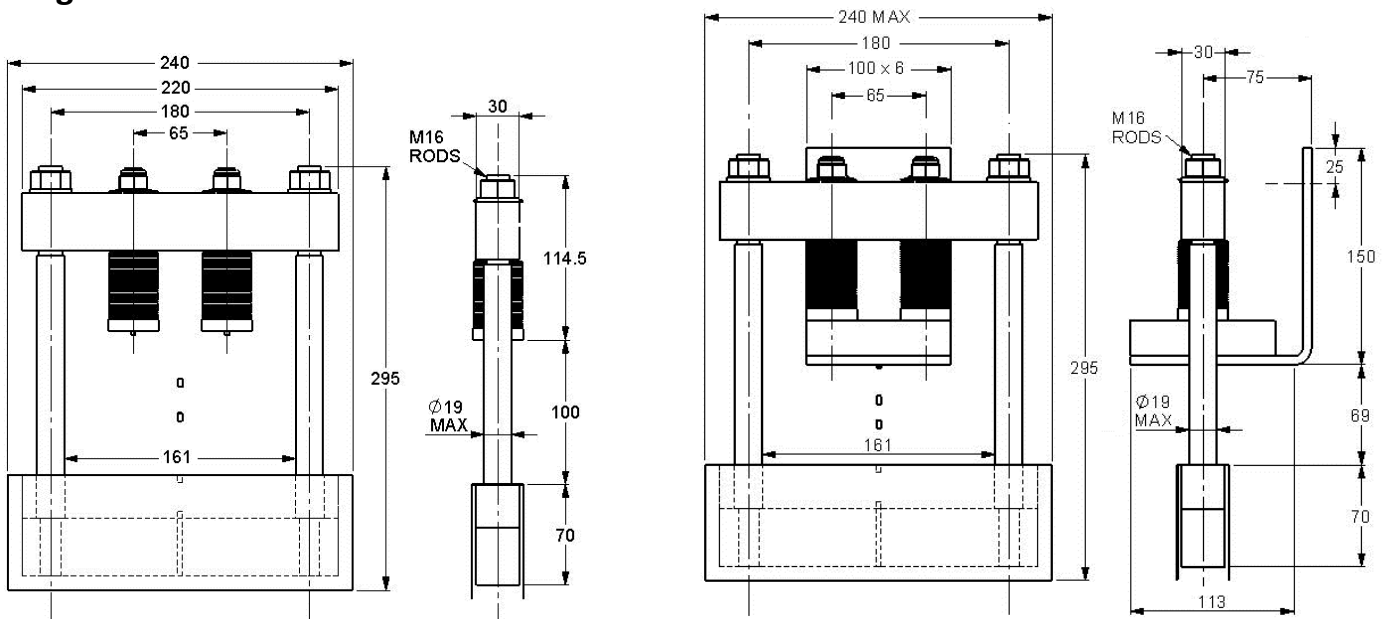
Figure C



Notes:

1. DIMENSIONS IN INCHES [MILLIMETERS].
2. " Z " DIMENSION CAN BE CHANGED AS PER REQUIREMENT.
3. " D " DIMENSION CAN BE CHANGED AS PER REQUIREMENT.

Figure D

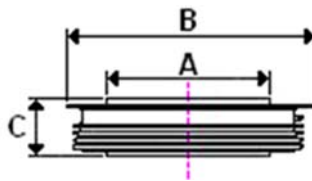


SA

DA

Other accessories and lead sets

| Part No. | Accessory | | | |
|--------------------|--|-----------|-------|------|
| XSGSCX13 | Press Pack Semiconductor Mounting Grease (1kg tub) | | | |
| XST1000M08P | M8 PTFE tube x 1m length insulation | | | |
| XST1000M10P | M10 PTFE tube x 1m length insulation | | | |
| XST1000M12P | M12 PTFE tube x 1m length insulation | | | |
| XST1000M16P | M16 PTFE tube x 1m length insulation | | | |
| Insulator capsules | | Dimension | | |
| | | A | B | C |
| | | mm | mm | mm |
| L0001YC450XXX | 30mm diameter poleface Insulator Capsule | 30 | 42 | 15.1 |
| L0001QC450XXX | 43mm diameter poleface Insulator Capsule | 38 | 58.5 | 14.5 |
| L0001MC450XXX | 56mm diameter poleface Insulator Capsule | 47 | 74 | 27.7 |
| L0001HC450XXX | 68mm diameter poleface Insulator Capsule | 68 | 100 | 14.5 |
| L0001TC450XXX | 87mm diameter poleface Insulator Capsule | 73.1 | 110.5 | 35 |
| L0001FC450XXX | 100mm diameter poleface Insulator Capsule | 75 | 112 | 26.6 |



| Part No. | Lead dimension and termination | Device type |
|--------------|---|-------------|
| XSL220C2WRT | 220mm long twisted pair, Silicone sleeve cable 16/0.2, Red / White, M4 ring terminal | Thyristor |
| XSL300C2WRP | 300mm long pair, Silicone sleeve cable 16/0.2, Red / White, M4 ring terminal | Thyristor |
| XSL300C2WS | 300mm long gate wire, Silicone sleeve cable 16/0.2, White, M4 ring terminal | Thyristor |
| XSL350C2WRP | 350mm long pair, Silicone sleeve cable 16/0.2, Red / White, M4 ring terminal | Thyristor |
| XSL400C2WRP | 400mm long pair, Silicone sleeve cable 16/0.2, Red / White, M4 ring terminal | Thyristor |
| XSL500C2WRP | 500mm long pair, Silicone sleeve cable 16/0.2, Red / White, M4 ring terminal | Thyristor |
| XSL600C2WRP | 600mm long pair, Silicone sleeve cable 16/0.2, Red / White, M4 ring terminal | Thyristor |
| XSL1000C2WRP | 1000mm long pair, Silicone sleeve cable 16/0.2, Red / White, M4 ring terminal | Thyristor |
| XSL1000C2WRT | 1000mm long twisted pair, Silicone sleeve cable 16/0.2, Red / White, M4 ring terminal | Thyristor |
| XSL1100C2WRT | 1100mm long twisted pair, Silicone sleeve cable 16/0.2, Red / White, M4 ring terminal | Thyristor |



Disclaimer Notice - Information furnished is believed to be accurate and reliable. However, users should independently evaluate the suitability of and test each product selected for their own applications. Littelfuse products are not designed for, and may not be used in, all applications. Read complete Disclaimer Notice at www.littelfuse.com/disclaimer-electronics.