

# ATS CERAMIC FUSE RATED 36V

RoHS



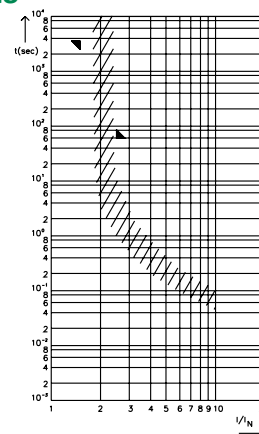
## Specifications

Insulating Body: Out of ceramic  
Melting Element: See chart below  
Complies with: DIN 72581-1

## Ordering Information

Part Number	Package Size
151.51xx.xx6	100
151.51xx.xx2	5000

## Pre-Arcing Time-Limits



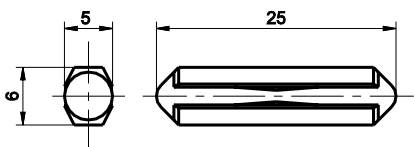
FI = 1.00 (max. operating current:  
1.0 x I<sub>rat</sub> at 23°C)

## Description

36 VDC Torpedo-style fuse links with current rating 5A to 25A.

## Dimensions

Dimensions in mm



## Time-Current Characteristics

% of Rating	Opening Time Min / Max (s)
150	1 h / -
250	- / 60 s

## Ratings

Part Number	Current Rating	Melting Element	Housing Color	Typ. Voltage Drop	
				Standard DIN max.	Littelfuse max.
151.5155.450_	5 A	Zn, gal. SN	Yellow	100 mV	50mV
151.5112.4806	8 A	Zn	White	100 mV	50mV
151.5152.4802	8 A	Zn, gal. SN	White	100 mV	50mV
151.5162.4802	8 A	CuZn	White	100 mV	50mV
151.5173.4802	8 A	CuZn	White	100 mV	50mV
151.5182.516_	16 A	Cu	Red	100 mV	50mV
151.5182.5162	16 A	Zn, gal. SN	Red	100 mV	50mV
151.5182.525_	25 A	Cu	Blue	100 mV	50mV

Corresponding holder see Section "Fuse Holders."