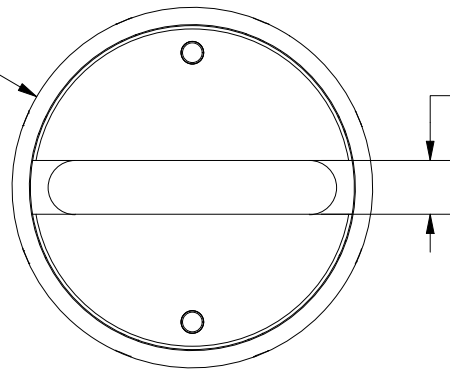


Ø63.50 ± 0.381
[Ø2.500 ± 0.015]



9.53 ± 0.15
[0.375 ± 0.006]

13.46 ± 0.25
[0.530 ± 0.010]

50.80 ± 0.89
[2.000 ± 0.035]

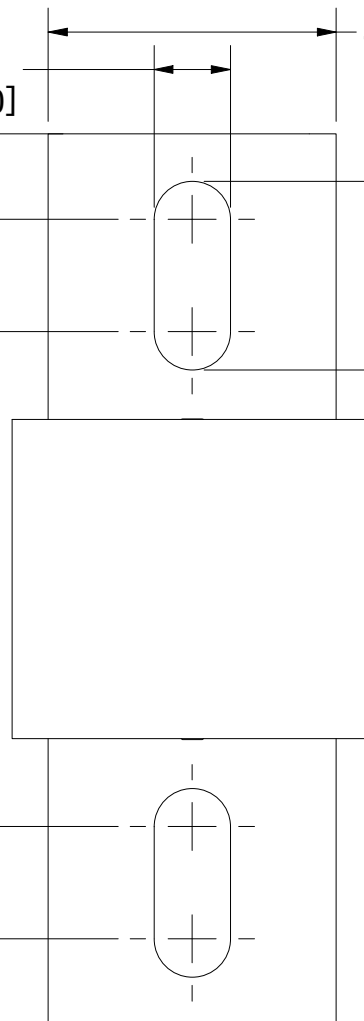
33.27 ± 0.25
[1.310 ± 0.010]

87.30 ± 1.60
[3.437 ± 0.063]

56.34
[2.218]

126.93 ± 1.60
[4.997 ± 0.063]

157.15 ± 1.60
[6.187 ± 0.063]



REVISION		
REV	DATE	DESCRIPTION
A	6/29/23	526672GCP - RELEASE MRY

1	NO	COMPONENT NO	DESCRIPTION	QTY/M	U/M
---	----	--------------	-------------	-------	-----

BILL OF MATERIAL

<S>	CRITICAL CHARACTERISTIC FOR PART SAFETY/COMPLIANCE				
●	DENOTES CRITICAL CHARACTERISTICS.				
CPK	DENOTES CPK DIMENSIONS, -MINIMUM CPK VALUE				
⊠	DENOTES A CHARACTERISTIC THAT PROVIDES AN INDICATION OF PROCESS PERFORMANCE. PROCEDURE FOR MEASUREMENT AND TRACKING TO BE DEFINED IN LITTELFUSE INSPECTION INSTRUCTIONS.				
CP	DENOTES CP DIMENSIONS, -MINIMUM CP VALUE MUST BE WITHIN THE DIMENSIONAL LIMITATIONS SHOWN ON DRAWING AND INITIALLY LOCATED TO ALLOW FOR MAXIMUM TOOL LIFE.				A

MATL SPEC	FINISH			
-----------	--------	--	--	--

DRW JMoler	DATE 6/21/2023	SCALE NTS	FINISH GOOD WT GRAMS/PIECE	
---------------	-------------------	--------------	-------------------------------	--

UNLESS OTHERWISE SPECIFIED, DIMENSIONS ARE IN MILLIMETERS, DIMENSIONS IN BRACKETS [] ARE INCHES DIMENSIONING AND DO NOT INCLUDE PLATING. TOLERANCING TO BE INTERPRETED IN ACCORDANCE WITH ANSI Y14.5M-1994

3RD ANGLE PROJECTION				

TITLE	L50QS 700-800A OUTLINE			
--------------	------------------------	--	--	--

 CHICAGO, ILLINOIS 60631	REVISION	DRWG NO.	SHEET 1 OF 1	
	A	OL-L50QS800		