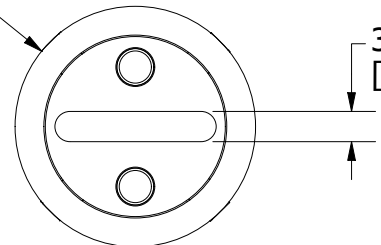


Ø25.40 ± 0.381  
[Ø1.000 ± 0.015]

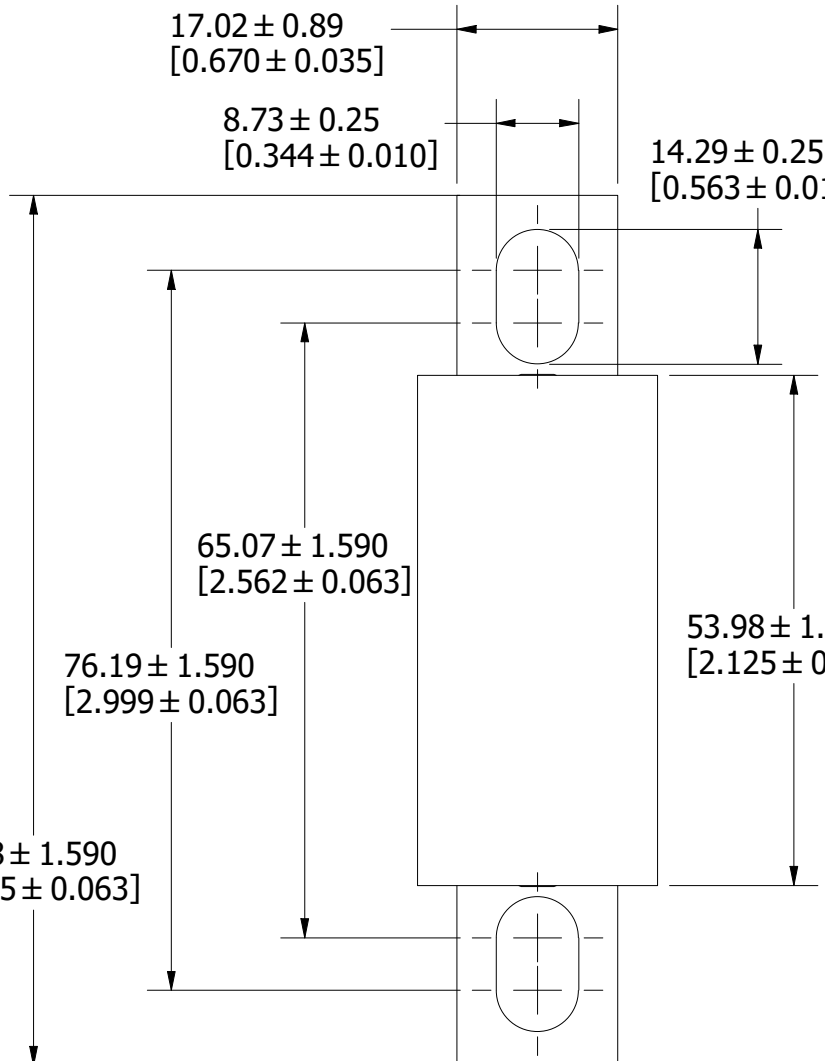


3.18 ± 0.15  
[0.125 ± 0.006]

17.02 ± 0.89  
[0.670 ± 0.035]

8.73 ± 0.25  
[0.344 ± 0.010]

14.29 ± 0.25  
[0.563 ± 0.010]



65.07 ± 1.590  
[2.562 ± 0.063]

76.19 ± 1.590  
[2.999 ± 0.063]

53.98 ± 1.00  
[2.125 ± 0.039]

92.08 ± 1.590  
[3.625 ± 0.063]

REVISION		
REV	DATE	DESCRIPTION
A	6/29/23	526672GCP - RELEASE MRY

1	COMPONENT NO	DESCRIPTION	QTY/M	U/M	
<b>BILL OF MATERIAL</b>					
<S>	CRITICAL CHARACTERISTIC FOR PART SAFETY/COMPLIANCE				
●	DENOTES CRITICAL CHARACTERISTICS.				
CPK	DENOTES CPK DIMENSIONS, -MINIMUM CPK VALUE				
ST	DENOTES A CHARACTERISTIC THAT PROVIDES AN INDICATION OF PROCESS PERFORMANCE. PROCEDURE FOR MEASUREMENT AND TRACKING TO BE DEFINED IN LITTELFUSE INSPECTION INSTRUCTIONS.				
CP	DENOTES CP DIMENSIONS, -MINIMUM CP VALUE MUST BE WITHIN THE DIMENSIONAL LIMITATIONS SHOWN ON DRAWING AND INITIALLY LOCATED TO ALLOW FOR MAXIMUM TOOL LIFE.				
MATL SPEC			FINISH		
DRW JMoler	DATE 6/21/2023	SCALE NTS	FINISH GOOD WT GRAMS/PIECE		
UNLESS OTHERWISE SPECIFIED, DIMENSIONS ARE IN MILLIMETERS, DIMENSIONS IN BRACKETS [ ] ARE INCHES DIMENSIONING AND DO NOT INCLUDE PLATING. TOLERANCING TO BE INTERPRETED IN ACCORDANCE WITH ANSI Y14.5M-1994					
3RD ANGLE PROJECTION					
<b>TITLE</b> L50QS 35-100A OUTLINE					
 CHICAGO, ILLINOIS 60631		REVISION <b>A</b>	DRWG NO. <b>OL-L50QS100</b>	SHEET 1 OF 1	

A