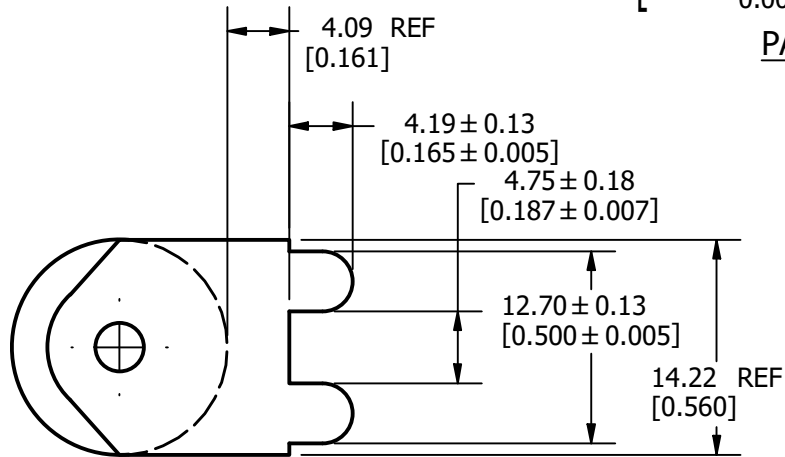
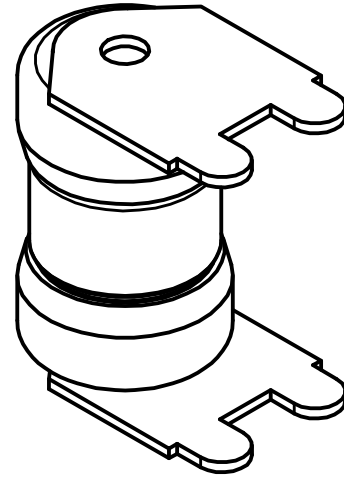
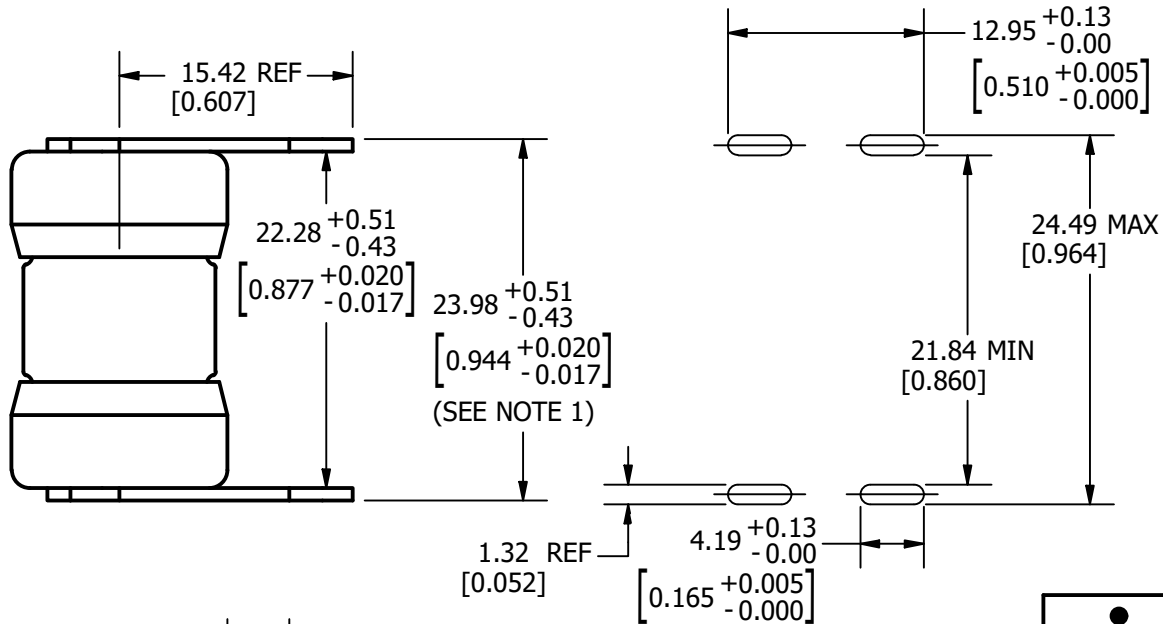


REVISION		
REV	DATE	DESCRIPTION
A	2/15/18	518846GCP - RELEASE PER EM3011 MRY



**PAD LAYOUT**

NOTE:  
1. MEASUREMENT TAKEN AT END OF TERMINALS.

**LEAD-FREE SOLDERING PROFILE:**

PRE-HEAT: ABOVE 130°C FOR 75 SECONDS MAX.  
REFLOW: 278°C FOR 8 SECONDS MAX.  
TIME: 250 SECONDS MAX.  
MAX. TEMP: 280°C

●	DENOTES CRITICAL CHARACTERISTICS.
CPK	DENOTES CPK DIMENSIONS, -MINIMUM CPK VALUE
⊠	DENOTES A CHARACTERISTIC THAT PROVIDES AN INDICATION OF PROCESS PERFORMANCE. PROCEDURE FOR MEASUREMENT AND TRACKING TO BE DEFINED IN LITTELFUSE INSPECTION INSTRUCTIONS.
CP	DENOTES CP DIMENSIONS, -MINIMUM CP VALUE MUST BE WITHIN THE DIMENSIONAL LIMITATIONS SHOWN ON DRAWING AND INITIALLY LOCATED TO ALLOW FOR MAXIMUM TOOL LIFE.

**A**

MATL SPEC		FINISH	
DRW MYORK	DATE 1/17/2018	SCALE NTS	FINISH GOOD WT GRAMS/PIECE

UNLESS OTHERWISE SPECIFIED, DIMENSIONS ARE IN MILLIMETERS, DIMENSIONS IN BRACKETS [ ] ARE INCHES DIMENSIONING AND DO NOT INCLUDE PLATING. TOLERANCING TO BE INTERPRETED IN ACCORDANCE WITH ANSI Y14.5M-1994

3RD ANGLE PROJECTION	
----------------------	--

<b>TITLE</b>	JLLN-LSE OUTLINE
--------------	------------------

 CHICAGO, ILLINOIS 60631	REVISION	DRWG NO.	SHEET 1 OF 1
	A	OL-JLLN000LSE	