

# Class RK5 Fuses

## IDSR Series

600 V ac • Dual Element • Time Delay •  $\frac{1}{10}$ –600 A



### Description

The time-delay, dual-element IDSR series fuses combine a 600 V dc capability with indication to provide an ideal solution for many dc applications. These fuses offer a patented, state-of-the-art, solid-state design with maximum reliability and superior performance characteristics.

### Features & Benefits

FEATURES	BENEFITS
<b>Excellent short-circuit protection</b>	Improves safety through faster response to fault currents
<b>Dual-element design</b>	Provides advanced short-circuit and overload protection
<b>Current-limiting</b>	Restricts fault currents to provide a high degree of circuit protection
<b>Visual blown fuse indication</b>	Indication window turns black allowing fast and easy identification of a blown fuse

### Applications

- Dc circuits
- Solar inverters
- Motors
- Transformers and solenoids
- Fluorescent lighting

### Specifications

<b>Voltage Rating</b>	Ac: 600 V Dc: 600 V
<b>Ampere Range</b>	$\frac{1}{10}$ –600 A
<b>Interrupting Ratings</b>	Ac: 200 kA rms symmetrical; 300 kA rms symmetrical (Littelfuse self-certified) Dc: 20 kA
<b>Applicable Standards</b>	UL 248-12, Class RK5
<b>Country of Origin</b>	Mexico

# Class RK5 Fuses

## IDSR Series

### Certification & Compliance

<b>UL</b>	UL Listed (File: E81895)
<b>CSA</b>	CSA Certified (File: LR29862)

### Accessories

LFR60 series fuse holder

### Ordering Information

AMPERE	CATALOG NUMBER	PRODUCT MARKING	PACK QUANTITY	ORDERING NUMBER	UPC	AGENCY APPROVALS	
						UL	CSA
1/10	IDSR.100	IDSR 1/10	10	IDSR.100T	07945801523	•	•
15/100	IDSR.150	IDSR 15/100	10	IDSR.150T	07945801524	•	•
2/10	IDSR.200	IDSR 2/10	10	IDSR.200T	07945801525	•	•
1/4	IDSR.250	IDSR 1/4	10	IDSR.250T	07945801526	•	•
3/10	IDSR.300	IDSR 3/10	10	IDSR.300T	07945801527	•	•
4/10	IDSR.400	IDSR 4/10	10	IDSR.400T	07945801528	•	•
1/2	IDSR.500	IDSR 1/2	10	IDSR.500T	07945801529	•	•
6/10	IDSR.600	IDSR 6/10	10	IDSR.600T	07945801530	•	•
8/10	IDSR.800	IDSR 8/10	10	IDSR.800T	07945801531	•	•
1	IDSR001	IDSR 1	10	IDSR001.T	07945801532	•	•
1 1/8	IDSR1.12	IDSR 1 1/8	10	IDSR1.12T	07945801533	•	•
1 1/4	IDSR1.25	IDSR 1 1/4	10	IDSR1.25T	07945801534	•	•
1 1/10	IDSR01.4	IDSR 1 1/10	10	IDSR01.4T	07945801535	•	•
1 1/2	IDSR01.5	IDSR 1 1/2	10	IDSR01.5T	07945801536	•	•
1 9/10	IDSR01.6	IDSR 1 9/10	10	IDSR01.6T	07945801537	•	•
1 8/10	IDSR01.8	IDSR 1 8/10	10	IDSR01.8T	07945801538	•	•
2	IDSR002	IDSR 2	10	IDSR002.T	07945801539	•	•
2 1/4	IDSR2.25	IDSR 2 1/4	10	IDSR2.25T	07945801540	•	•
2 1/2	IDSR02.5	IDSR 2 1/2	10	IDSR02.5T	07945801541	•	•
2 9/10	IDSR02.8	IDSR 2 9/10	10	IDSR02.8T	07945801542	•	•
3	IDSR003	IDSR 3	10	IDSR003.T	07945801543	•	•
3 3/10	IDSR03.2	IDSR 3 3/10	10	IDSR03.2T	07945801544	•	•
3 1/2	IDSR03.5	IDSR 3 1/2	10	IDSR03.5T	07945801545	•	•
4	IDSR004	IDSR 4	10	IDSR004.T	07945801546	•	•
4 1/2	IDSR04.5	IDSR 4 1/2	10	IDSR04.5T	07945801547	•	•
5	IDSR005	IDSR 5	10	IDSR005.T	07945801548	•	•
5 9/10	IDSR05.6	IDSR 5 9/10	10	IDSR05.6T	07945801549	•	•
6	IDSR006	IDSR 6	10	IDSR006.T	07945801550	•	•
6 1/4	IDSR6.25	IDSR 6 1/4	10	IDSR6.25T	07945801551	•	•
7	IDSR007	IDSR 7	10	IDSR007.T	07945801552	•	•
7 1/2	IDSR07.5	IDSR 7 1/2	10	IDSR07.5T	07945801553	•	•
8	IDSR008	IDSR 8	10	IDSR008.T	07945801554	•	•

# Class RK5 Fuses

## IDSR Series

### Ordering Information

AMPERE	CATALOG NUMBER	PRODUCT MARKING	PACK QUANTITY	ORDERING NUMBER	UPC	AGENCY APPROVALS	
						UL	CSA
9	IDSR009	IDSR 9	10	IDSR009.T	07945801555	•	•
10	IDSR010	IDSR 10	10	IDSR010.T	07945801556	•	•
12	IDSR012	IDSR 12	10	IDSR012.T	07945801557	•	•
15	IDSR015	IDSR 15	10	IDSR015.T	07945801558	•	•
17 ½	IDSR17.5	IDSR 17 ½	10	IDSR17.5T	07945801559	•	•
20	IDSR020	IDSR 20	10	IDSR020.T	07945801560	•	•
25	IDSR025	IDSR 25	10	IDSR025.T	07945801561	•	•
30	IDSR030	IDSR 30	10	IDSR030.T	07945801562	•	•
35	IDSR035	IDSR 35	10	IDSR035.T	07945801563	•	•
40	IDSR040	IDSR 40	10	IDSR040.T	07945801564	•	•
45	IDSR045	IDSR 45	10	IDSR045.T	07945801565	•	•
50	IDSR050	IDSR 50	10	IDSR050.T	07945801566	•	•
60	IDSR060	IDSR 60	10	IDSR060.T	07945801567	•	•
70	IDSR070	IDSR 70	5	IDSR070.V	07945801568	•	•
75	IDSR075	IDSR 75	5	IDSR075.V	07945801569	•	•
80	IDSR080	IDSR 80	5	IDSR080.V	07945801570	•	•
90	IDSR090	IDSR 90	5	IDSR090.V	07945801571	•	•
100	IDSR100	IDSR 100	5	IDSR100.V	07945801572	•	•
110	IDSR110	IDSR 110	1	IDSR110.X	07945801573	•	•
125	IDSR125	IDSR 125	1	IDSR125.X	07945801574	•	•
150	IDSR150	IDSR 150	1	IDSR150.X	07945801575	•	•
175	IDSR175	IDSR 175	1	IDSR175.X	07945801576	•	•
200	IDSR200	IDSR 200	1	IDSR200.X	07945801577	•	•
225	IDSR225	IDSR 225	1	IDSR225.X	07945801578	•	•
250	IDSR250	IDSR 250	1	IDSR250.X	07945801579	•	•
300	IDSR300	IDSR 300	1	IDSR300.X	07945801580	•	•
350	IDSR350	IDSR 350	1	IDSR350.X	07945801581	•	•
400	IDSR400	IDSR 400	1	IDSR400.X	07945801582	•	•
450	IDSR450	IDSR 450	1	IDSR450.X	07945801583	•	•
500	IDSR500	IDSR 500	1	IDSR500.X	07945801584	•	•
600	IDSR600	IDSR 600	1	IDSR600.X	07945801585	•	•

# Class RK5 Fuses

## IDSR Series

### Dimensions

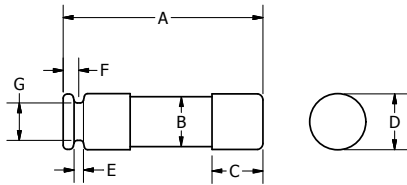


FIG. 1

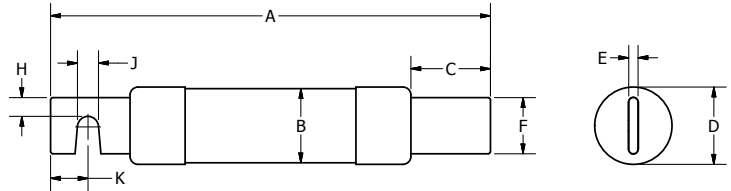


FIG. 2

AMPS	FIGURE NUMBER	DIMENSIONS INCHES (MM)									
		A	B	C	D	E	F	G	H	J	K
1/10-30	1	5 (127.0)	0.76 (19.2)	0.63 (15.9)	0.81 (20.7)	0.09 (2.4)	0.19 (4.7)	0.61 (15.5)	-	-	-
35-60	1	5.50 (139.7)	1 (25.1)	0.63 (15.9)	1.06 (27.0)	0.09 (2.4)	0.25 (6.4)	0.88 (22.2)	-	-	-
70-100	2	7.88 (200.0)	1.24 (31.5)	1.06 (27.0)	1.28 (32.6)	0.13 (3.2)	0.75 (19.1)	-	0.25 (6.4)	0.28 (7.1)	0.50 (12.7)
110-200	2	9.63 (244.5)	1.74 (44.2)	1.47 (37.3)	1.79 (45.4)	0.19 (4.8)	1.13 (28.6)	-	0.44 (11.1)	0.28 (7.1)	0.69 (17.5)
225-400	2	11.63 (295.3)	2.50 (63.1)	2 (50.8)	2.54 (64.6)	0.25 (6.4)	1.63 (41.3)	-	0.63 (15.9)	0.41 (10.3)	0.95 (24.0)
450-600	2	13.38 (339.7)	3 (76.0)	2.41 (61.1)	3.04 (77.3)	0.25 (6.4)	2 (50.8)	-	0.75 (19.1)	0.53 (13.5)	1.13 (28.6)

### Current-Limiting Effects of IDSR Fuses

SHORT CIRCUIT CURRENT*	APPARENT RMS SYMMETRICAL CURRENT FOR VARIOUS FUSE RATINGS						
	15 A	30 A	60 A	100 A	200 A	400 A	600 A
5,000	800	1,100	2,100	3,200	5,000	5,000	5,000
10,000	1,100	1,600	2,900	4,300	7,300	10,000	10,000
15,000	1,300	1,900	3,400	5,000	8,600	13,700	15,000
20,000	1,400	2,200	3,800	5,600	9,500	15,500	19,000
25,000	1,500	2,500	4,100	6,100	10,300	16,700	21,500
30,000	1,600	2,700	4,500	6,500	11,000	17,700	23,500
35,000	1,700	2,900	4,700	6,800	11,600	18,600	25,200
40,000	1,800	3,100	5,000	7,200	12,100	19,400	26,600
50,000	1,900	3,400	5,400	7,800	13,100	20,800	29,500
60,000	2,000	3,600	5,800	8,300	13,900	22,000	30,600
80,000	2,200	4,000	6,300	9,100	15,400	24,000	33,200
100,000	2,300	4,200	6,800	9,800	16,700	25,500	35,100
150,000	2,600	4,500	7,700	11,200	19,300	28,100	38,000
200,000	2,800	4,600	8,400	12,400	21,400	30,000	39,600

\*Prospective RMS Symmetrical Amperes Short-Circuit Current  
 Note: Data Derived from Peak Let-Thru Curves

**Disclaimer Notice** – Information furnished is believed to be accurate and reliable. However, users should independently evaluate the suitability of and test each product selected for their own applications. Littelfuse products are not designed for, and may not be used in, all applications. Read complete Disclaimer Notice at [www.littelfuse.com/product-disclaimer](http://www.littelfuse.com/product-disclaimer).