

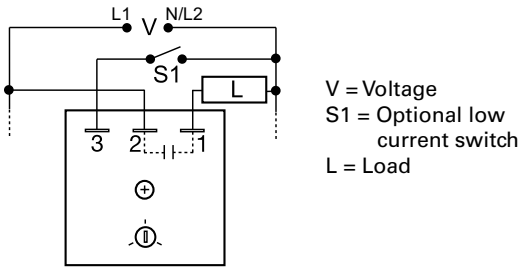
# FSU1000 SERIES



OBSOLETE



## Wiring Diagram



## Ordering Information

| MODEL   | INRUSH RATING | LOAD RATING |
|---------|---------------|-------------|
| FSU1000 | 10A           | 1A          |
| FSU1003 | 60A           | 6A          |
| FSU1004 | 100A          | 10A         |
| FSU1005 | 200A          | 20A         |

If you don't find the part you need, call us for a custom product 800-843-8848

## Description

The FSU1000 incorporates an onboard adjustable flash rate of 10 to 100 FPM and a universal input voltage in one device. Its circuitry is encapsulated and is capable of controlling loads of up to 20A. The versatility of the FSU1000 makes it ideal for applications where various flash rates and operating voltages are required.

### Operation

When input voltage is applied to terminal 2 and the load (lamp), the load energizes steadily. When input voltage is applied to terminal 3, the output flashes.

**Optional Low Current Switch (S1):** This low current switch could be a limit switch or contact. While open, the operator sees the load (lamp) ON and operating. When the limit switch closes, the load (lamp) flashes to attract attention.

## Features & Benefits

| FEATURES   | BENEFITS   |
|--|--|
| <b>Universal input voltage 24 to 240VAC</b>      | Allows flexibility for a wide range of applications with one part  |
| <b>Onboard adjustable flash rate</b>             | Provides flexibility for user to select flash rate between 10 - 100 FPM  |
| <b>Totally solid state and encapsulated</b>      | No moving parts to arc and wear out over time and encapsulated to protect against shock, vibration, and humidity |
| <b>High output rating up to 20A, 200A inrush</b> | Allows direct operation of high current loads without a contactor  |

## Accessories



**P1015-13** (AWG 10/12), **P1015-64** (AWG 14/16), **P1015-14** (AWG 18/22) **Female Quick Connect**

These 0.25 in. (6.35 mm) female terminals are constructed with an insulator barrel to provide strain relief.



**P1015-18 Quick Connect to Screw Adapter**  
Screw adapter terminal designed for use with all modules with 0.25 in. (6.35 mm) male quick connect terminals.

# FSU1000 SERIES

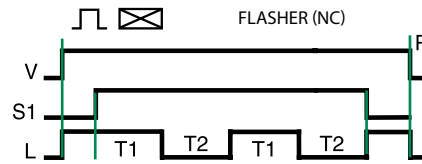
## Specifications

### Technical Data

|                                      |   |
|--------------------------------------|---|
| <b>Operation</b>                     | ON/OFF recycling solid-state flasher (continuous duty)                    |
| <b>Flash Rate</b>                    | Adjustable 10 - 100 FPM   |
| <b>ON/OFF Ratio</b>                  | ≈ 50%   |
| <b>Input</b>                         |   |
| <b>Range/Frequency</b>               | 24 to 240VAC / 50/60Hz  |
| <b>Output</b>                        |   |
| <b>Load Type</b>                     | Inductive, resistive, or incandescent                                     |
| <b>Maximum Load Rating</b>           | 1, 6, 10, or 20A steady state   |
| <b>Inrush</b>                        | 10 times steady state current   |
| <b>Mechanical</b>                    |   |
| <b>Mounting*</b>                     | Surface mount with one #10 (M5 x 0.8) screw                               |
| <b>Dimensions</b>                    |   |
| <b>FSU1000</b>                       | <b>H</b> 50.8 mm (2"); <b>W</b> 50.8 mm (2");<br><b>D</b> 30.7 mm (1.21") |
| <b>FSU1003, FSU1004</b>              | <b>H</b> 50.8 mm (2"); <b>W</b> 50.8 mm (2");<br><b>D</b> 38.4 mm (1.51") |
| <b>Termination</b>                   | 0.25 in. (6.35 mm) male quick connect terminals                           |
| <b>Protection</b>                    |   |
| <b>Circuitry</b>                     | Encapsulated  |
| <b>Environmental</b>                 |   |
| <b>Operating/Storage Temperature</b> | -20° to 60°C (240VAC +50°C) / -40° to 85°C                                |
| <b>Weight</b>                        | 1A units: ≈ 2.4 oz (68 g)<br>≥ 6A units: ≈ 3.9 oz (111 g)                 |

\*Units rated > 6A must be bolted to a metal surface using the included heat sink compound. The maximum mounting surface temperature is 90°C.

## Flasher Function Diagram



V = Voltage  
S1 = Initiate Switch  
L = Load  
R = Reset  
T1 = ON Time  
T2 = OFF Time  
T1 ≈ T2