





# LFCL CABLE LIMITERS

250/600 VAC



| TYPE    | TERMINATION   | VOLTAGE RATING | COPPER CABLE SIZE | ORDERING NUMBER |
|---------|---|----------------|-------------------|-----------------|
| 1       | <br>CABLE TO CABLE               | 600 VAC        | 4 AWG             | LFCL0004ZC1     |
|         |   | 600 VAC        | 3 AWG             | LFCL0003ZC1     |
|         |   | 600 VAC        | 2 AWG             | LFCL0002ZC1     |
|         |   | 600 VAC        | 1 AWG             | LFCL0001ZC1     |
|         |   | 600 VAC        | 1/0 AWG           | LFCL01/0ZC1     |
|         |   | 600 VAC        | 2/0 AWG           | LFCL02/0ZC1     |
|         |   | 600 VAC        | 3/0 AWG           | LFCL03/0ZC1     |
|         |   | 600 VAC        | 4/0 AWG           | LFCL04/0ZC1     |
|         |   | 600 VAC        | 250 kcmil         | LFCL0250ZC1     |
|         |   | 600 VAC        | 350 kcmil         | LFCL0350ZC1     |
|         |   | 600 VAC        | 500 kcmil         | LFCL0500ZC1     |
|         |   | 600 VAC        | 600 kcmil         | LFCL0600ZC1     |
| 600 VAC | 750 kcmil   | LFCL0750ZC1    |                   |                 |
| 600 VAC | 1000 kcmil  | LFCL1000ZC1    |                   |                 |
| 3       | <br>CABLE TO OFFSET BUS        | 600 VAC        | 12 AWG            | LFCL0012ZC3     |
|         |   | 600 VAC        | 10 AWG            | LFCL0010ZC3     |
|         |   | 600 VAC        | 6 AWG             | LFCL0006ZC3     |
|         |   | 600 VAC        | 4 AWG             | LFCL0004ZC3     |
|         |   | 600 VAC        | 2 AWG             | LFCL0002ZC3     |
|         |   | 600 VAC        | 1 AWG             | LFCL0001ZC3     |
|         |   | 600 VAC        | 1/0 AWG           | LFCL01/0ZC3     |
|         |   | 600 VAC        | 2/0 AWG           | LFCL02/0ZC3     |
|         |   | 600 VAC        | 3/0 AWG           | LFCL03/0ZC3     |
|         |   | 600 VAC        | 4/0 AWG           | LFCL04/0ZC3     |
|         |   | 600 VAC        | 250 kcmil         | LFCL0250ZC3     |
|         |   | 600 VAC        | 350 kcmil         | LFCL0350ZC3     |
| 600 VAC | 500 kcmil   | LFCL0500ZC3    |                   |                 |
| 600 VAC | 600 kcmil   | LFCL0600ZC3    |                   |                 |
| 600 VAC | 750 kcmil   | LFCL0750ZC3    |                   |                 |
| 5       | <br>STRAIGHT BUS TO OFFSET BUS | 250 VAC        | 2/0 AWG           | LFCL-UHA*       |
|         |   | 250 VAC        | 3/0 AWG           | LFCL-UHJ-M*     |
|         |   | 250 VAC        | 350 kcmil         | LFCL-UHJ-T*     |
|         |   | 250 VAC        | 600 kcmil         | LFCL-UHJ-W*     |
|         |   | 600 VAC        | 4/0 AWG           | LFCL04/0ZC5*    |
|         |   | 600 VAC        | 250 kcmil         | LFCL0250ZC5*    |
|         |   | 600 VAC        | 500 kcmil         | LFCL0500ZC5*    |
|         |   | 600 VAC        | 750 kcmil         | LFCL0750ZC5*    |
| 6       | <br>MOLE TO CABLE              | 600 VAC        | 4/0 AWG           | LFCL04/0ZC6     |
|         |   | 600 VAC        | 250 kcmil         | LFCL0250ZC6     |
|         |   | 600 VAC        | 500 kcmil         | LFCL0500ZC6     |

\*Suitable for use with aluminum cables/conductors.  
 For sizing contact Littelfuse Technical Support at 1-800-TEC-FUSE or [techline@littelfuse.com](mailto:techline@littelfuse.com)

## Description

Cable limiters are fusible devices that provide very fast short-circuit protection, primarily to faulted cables, but also to other conductors such as busway. Cable limiters do not have an ampere rating, and cannot be used to provide overload protection. They are instead selected by cable size; for example, a 500 kcmil cable requires a 500 kcmil cable limiter. Their main use is to isolate faulted cables in circuits containing three or more parallel conductors per phase. They may be installed on the line side of the main service to provide short-circuit protection to the service conductors. This is especially important when service conductors are tapped from large low voltage networks or from large low impedance transformers.

Cable limiters have terminals which permit them to be installed in a variety of equipment. The most common configuration is the offset blade on one end and the crimp terminal on the other end. This permits the limiter to replace a cable terminal (lug).

## Applications

- Service Entrance Conductors
- Between Transformer or network bus and bus-way terminal boxes as secondary ties.
- Feeders with three or more conductors per phase to share heavier load in large commercial and industrial installations
- Multiple Single conductor services, tapped from single (utility) transformer in multi-family residential and small commercial installations.

## Features

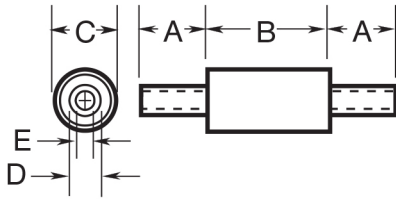
- Current-limiting characteristics provide protection to conductor insulation and reduce damage when faults occur.
- Properly applied cable limiters may permit the use of equipment with reduced withstand ratings
- Wide variety of terminations and cable ratings permit use in almost every situation.

## Specifications

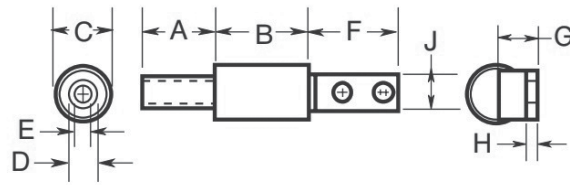
|                                      |  |
|--------------------------------------|--|
| <b>Voltage Ratings</b>               | 250 VAC, 600 VAC   |
| <b>Interrupting Rating</b>           | 100 kA (250 VAC), 200 kA (600 VAC)                               |
| <b>Cable Size Range</b>              | 12 AWG – 1000Kcmil Copper  |
| <b>Approvals</b>                     | Contact Tech-Line at 800-TEC-FUSE                                |
| <b>Recommended Installation Tool</b> | <b>Make:</b> Thomas & Betts<br><b>Crimp Tool:</b> TBM14_, TBM15_ |

## Web Resources

For additional information, see website: [Littelfuse.com/lfcl](http://Littelfuse.com/lfcl)



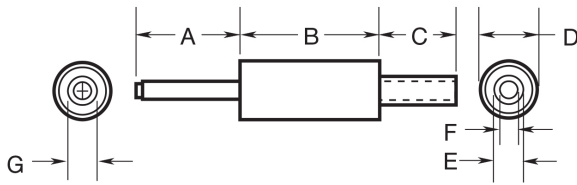
(Figure 1)



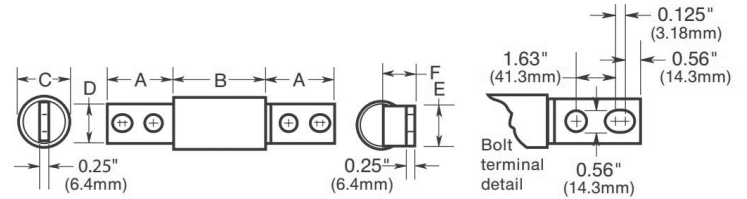
(Figure 2)

DIMENSIONS - IN (MM)

| LITTELFUSE ORDERING NUMBER | FIGURE NUMBER | COPPER CABLE SIZE | A           | B            | C           | D            | E           | F           | G           | H          | J            |
|----------------------------|---------------|-------------------|-------------|--------------|-------------|--------------|-------------|-------------|-------------|------------|--------------|
| LFCL0004ZC1                | 1             | 4 AWG             | 1.25 (31.8) | 2.88 (73.0)  | 1.06 (27.0) | 0.31 (7.9)   | 0.25 (6.4)  | —           | —           | —          | —            |
| LFCL0003ZC1                | 1             | 3 AWG             | 1.25 (31.8) | 2.88 (73.0)  | 1.06 (27.0) | 0.34 (8.7)   | 0.28 (7.1)  | —           | —           | —          | —            |
| LFCL0002ZC1                | 1             | 2 AWG             | 1.25 (31.8) | 2.88 (73.0)  | 1.06 (27.0) | 0.44 (11.1)  | 0.31 (7.9)  | —           | —           | —          | —            |
| LFCL0001ZC1                | 1             | 1 AWG             | 1.25 (31.8) | 2.88 (73.0)  | 1.06 (27.0) | 0.47 (11.9)  | 0.34 (8.7)  | —           | —           | —          | —            |
| LFCL01/OZC1                | 1             | 1/0 AWG           | 1.5 (38.1)  | 2.625 (66.7) | 1.25 (31.8) | 0.52 (13.1)  | 0.39 (9.9)  | —           | —           | —          | —            |
| LFCL02/OZC1                | 1             | 2/0 AWG           | 1.63 (41.3) | 2.625 (66.7) | 1.25 (31.8) | 0.44 (14.3)  | 0.70 (11.1) | —           | —           | —          | —            |
| LFCL03/OZC1                | 1             | 3/0 AWG           | 1.63 (41.3) | 3.63 (92.1)  | 1.44 (36.5) | 0.61 (15.5)  | 0.48 (12.3) | —           | —           | —          | —            |
| LFCL04/OZC1                | 1             | 4/0 AWG           | 1.75 (44.5) | 3.63 (92.1)  | 1.44 (36.5) | 0.34 (17.5)  | 0.55 (14.0) | —           | —           | —          | —            |
| LFCL0250ZC1                | 1             | 250 kcmil         | 1.88 (47.6) | 3.63 (92.1)  | 1.44 (36.5) | 0.75 (19.0)  | 0.59 (15.0) | —           | —           | —          | —            |
| LFCL0350ZC1                | 1             | 350 kcmil         | 2.0 (50.8)  | 3.63 (92.1)  | 1.63 (41.3) | 0.88 (22.2)  | 0.70 (17.9) | —           | —           | —          | —            |
| LFCL0500ZC1                | 1             | 500 kcmil         | 2.88 (73.0) | 3.08 (78.2)  | 1.88 (47.6) | 1.06 (27.0)  | 0.83 (21.0) | —           | —           | —          | —            |
| LFCL0600ZC1                | 1             | 600 kcmil         | 3.5 (88.9)  | 3.08 (78.2)  | 1.88 (47.6) | 1.155 (29.3) | 0.92 (23.4) | —           | —           | —          | —            |
| LFCL0750ZC1                | 1             | 750 kcmil         | 3.5 (88.9)  | 3.75 (95.25) | 2.5 (63.5)  | 1.31 (33.3)  | 1.06 (27.0) | —           | —           | —          | —            |
| LFCL1000ZC1                | 1             | 1000 kcmil        | 5.0 (127.0) | 3.75 (95.25) | 2.5 (63.5)  | 1.56 (39.7)  | 1.22 (31.0) | —           | —           | —          | —            |
| LFCL0012ZC3                | 2             | 12 AWG            | 1.25 (31.8) | 2.88 (73.0)  | 1.06 (27.0) | 0.19 (4.8)   | 0.125 (3.2) | 3.31 (84.1) | 0.72 (18.3) | 0.19 (4.8) | 1.125 (28.6) |
| LFCL0010ZC3                | 2             | 10 AWG            | 1.25 (31.8) | 2.88 (73.0)  | 1.06 (27.0) | 0.23 (6.0)   | 0.14 (3.6)  | 3.31 (84.1) | 0.72 (18.3) | 0.19 (4.8) | 1.125 (28.6) |
| LFCL0006ZC3                | 2             | 6 AWG             | 1.25 (31.8) | 2.88 (73.0)  | 1.06 (27.0) | 0.31 (7.9)   | 0.16 (4.0)  | 3.31 (84.1) | 0.72 (18.3) | 0.19 (4.8) | 1.125 (28.6) |
| LFCL0004ZC3                | 2             | 4 AWG             | 1.25 (31.8) | 2.88 (73.0)  | 1.06 (27.0) | 0.31 (7.9)   | 0.25 (6.4)  | 3.31 (84.1) | 0.72 (18.3) | 0.19 (4.8) | 1.125 (28.6) |
| LFCL0002ZC3                | 2             | 2 AWG             | 1.25 (31.8) | 2.88 (73.0)  | 1.06 (27.0) | 0.44 (11.1)  | 0.31 (7.9)  | 3.31 (84.1) | 0.72 (18.3) | 0.19 (4.8) | 1.125 (28.6) |
| LFCL0001ZC3                | 2             | 1 AWG             | 1.25 (31.8) | 2.88 (73.0)  | 1.06 (27.0) | 0.47 (11.9)  | 0.34 (8.7)  | 3.31 (84.1) | 0.72 (18.3) | 0.19 (4.8) | 1.125 (28.6) |
| LFCL01/OZC3                | 2             | 1/0 AWG           | 1.5 (38.1)  | 2.625 (66.7) | 1.25 (31.8) | 0.52 (13.1)  | 0.39 (9.9)  | 3.38 (85.7) | 0.88 (22.2) | 0.25 (6.4) | 1.125 (28.6) |
| LFCL02/OZC3                | 2             | 2/0 AWG           | 1.63 (41.3) | 2.625 (66.7) | 1.25 (31.8) | 0.56 (14.3)  | 0.44 (11.1) | 3.38 (85.7) | 0.88 (22.2) | 0.25 (6.4) | 1.125 (28.6) |
| LFCL03/OZC3                | 2             | 3/0 AWG           | 1.63 (41.3) | 3.63 (92.1)  | 1.44 (36.5) | 0.61 (15.5)  | 0.48 (12.3) | 3.38 (85.7) | 0.97 (24.6) | 0.25 (6.4) | 1.125 (28.6) |
| LFCL04/OZC3                | 2             | 4/0 AWG           | 1.75 (44.5) | 3.63 (92.1)  | 1.44 (36.5) | 0.69 (17.5)  | 0.55 (13.9) | 3.38 (85.7) | 0.97 (24.6) | 0.25 (6.4) | 1.125 (28.6) |
| LFCL0250ZC3                | 2             | 250 kcmil         | 1.88 (47.6) | 3.63 (92.1)  | 1.44 (36.5) | 0.75 (19.0)  | 0.59 (15.0) | 3.38 (85.7) | 0.97 (24.6) | 0.25 (6.4) | 1.125 (28.6) |
| LFCL0350ZC3                | 2             | 350 kcmil         | 2.0 (50.8)  | 3.63 (92.1)  | 1.63 (41.3) | 0.88 (22.2)  | 0.70 (17.8) | 3.38 (85.7) | 1.06 (27.0) | 0.25 (6.4) | 1.125 (28.6) |
| LFCL0500ZC3                | 2             | 500 kcmil         | 2.88 (73.0) | 3.08 (78.2)  | 1.88 (47.6) | 1.06 (27.0)  | 0.83 (21.0) | 3.38 (85.7) | 1.19 (30.2) | 0.25 (6.4) | 1.63 (41.3)  |
| LFCL0600ZC3                | 2             | 600 kcmil         | 3.5 (88.9)  | 3.75 (95.2)  | 2.5 (63.5)  | 1.16 (29.4)  | 0.92 (23.4) | 3.5 (88.9)  | 1.5 (38.1)  | 0.25 (6.4) | 2.0 (50.8)   |
| LFCL0750ZC3                | 2             | 750 kcmil         | 3.5 (88.9)  | 3.75 (95.2)  | 2.5 (63.5)  | 1.31 (33.3)  | 1.06 (27.0) | 3.5 (88.9)  | 1.5 (38.1)  | 0.25 (6.4) | 2.0 (50.8)   |

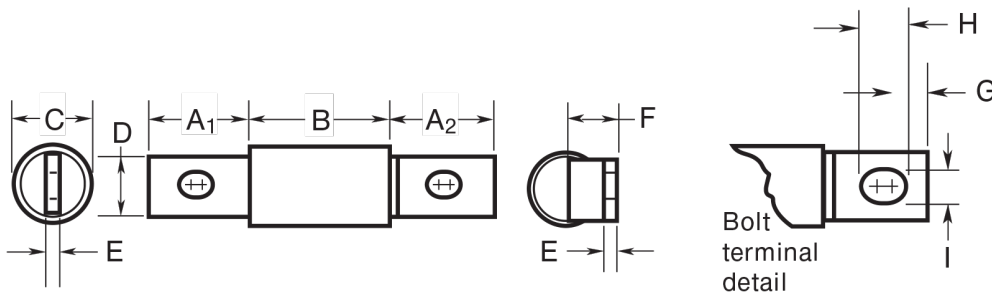


(Figure 3)



(Figure 4)

| DIMENSIONS - IN (MM)       |               |                   |                     |             |             |             |              |              |             |             |   |   |
|----------------------------|---------------|-------------------|---------------------|-------------|-------------|-------------|--------------|--------------|-------------|-------------|---|---|
| LITTELFUSE ORDERING NUMBER | FIGURE NUMBER | COPPER CABLE SIZE | ALUMINUM CABLE SIZE | A           | B           | C           | D            | E            | F           | G           | H | J |
| LFCL04/OZC6                | 3             | 4/0 AWG           | —                   | 2.5 (63.5)  | 3.63 (92.1) | 1.75 (44.5) | 1.44 (36.5)  | 0.69 (17.5)  | 0.55 (13.9) | 0.5 (12.7)  | — | — |
| LFCL0250ZC6                | 3             | 250 kcmil         | —                   | 2.5 (63.5)  | 3.63 (92.1) | 1.88 (47.6) | 1.44 (36.5)  | 0.75 (19.0)  | 0.28 (15.1) | 0.56 (14.3) | — | — |
| LFCL0500ZC6                | 3             | 500 kcmil         | —                   | 2.5 (63.5)  | 3.08 (78.2) | 2.88 (73.0) | 1.88 (47.6)  | 1.06 (27.0)  | 0.83 (21.0) | 0.81 (20.6) | — | — |
| LFCL04/OZC5                | 4             | 4/0 AWG           | 4/0 AWG             | 3.38 (85.7) | 3.63 (92.1) | 1.44 (36.5) | 1.125 (28.6) | 1.125 (28.6) | 0.97 (24.6) | —           | — | — |
| LFCL0250ZC5                | 4             | 250 kcmil         | 250 kcmil           | 3.38 (85.7) | 3.63 (92.1) | 1.44 (36.5) | 1.125 (28.6) | 1.125 (28.6) | 0.97 (24.6) | —           | — | — |
| LFCL0500ZC5                | 4             | 500 kcmil         | 500 kcmil           | 3.38 (85.7) | 3.08 (78.2) | 1.88 (47.6) | 1.5 (38.1)   | 1.63 (41.3)  | 1.19 (30.2) | —           | — | — |
| LFCL0750ZC5                | 4             | 750 kcmil         | 750 kcmil           | 3.5 (88.9)  | 3.75 (95.3) | 2.5 (63.5)  | 2.0 (50.8)   | 2.0 (50.8)   | 1.5 (38.1)  | —           | — | — |



(Figure 5)

| DIMENSIONS - IN (MM)       |               |                   |                     |                |                |             |             |             |            |             |            |             |             |
|----------------------------|---------------|-------------------|---------------------|----------------|----------------|-------------|-------------|-------------|------------|-------------|------------|-------------|-------------|
| LITTELFUSE ORDERING NUMBER | FIGURE NUMBER | COPPER CABLE SIZE | ALUMINUM CABLE SIZE | A <sub>1</sub> | A <sub>2</sub> | B           | C           | D           | E          | F           | G          | H           | I           |
| LFCL-UHA                   | 5             | 2/0 AWG           | 4/0 AWG             | 1.06 (27.0)    | 1.19 (30.2)    | 1.44 (36.5) | 1.00 (25.4) | 0.75 (19.0) | 0.12 (3.2) | 0.56 (14.3) | 0.19 (4.8) | 0.59 (15.1) | 0.41 (10.3) |
| LFCL-UHJ-M                 | 5             | 3/0 AWG           | 250 kcmil           | 1.53 (38.9)    | 1.75 (44.4)    | 1.59 (40.5) | 1.50 (38.1) | 1.00 (25.4) | 0.25 (6.3) | 0.87 (22.2) | 0.34 (8.6) | 0.69 (17.5) | 0.56 (14.3) |
| LFCL-UHJ-T                 | 5             | 350 kcmil         | 500 kcmil           | 1.53 (38.9)    | 1.75 (44.4)    | 1.59 (40.5) | 1.50 (38.1) | 1.00 (25.4) | 0.25 (6.3) | 0.87 (22.2) | 0.34 (8.6) | 0.69 (17.5) | 0.56 (14.3) |
| LFCL-UHJ-W                 | 5             | 600 kcmil         | 800 kcmil           | 1.53 (38.9)    | 1.75 (44.4)    | 1.59 (40.5) | 1.50 (38.1) | 1.00 (25.4) | 0.25 (6.3) | 0.87 (22.2) | 0.34 (8.6) | 0.69 (17.5) | 0.56 (14.3) |

**Disclaimer Notice** – Information furnished is believed to be accurate and reliable. However, users should independently evaluate the suitability of and test each product selected for their own applications. Littelfuse products are not designed for, and may not be used in, all applications. Read complete Disclaimer Notice at [www.littelfuse.com/product-disclaimer](http://www.littelfuse.com/product-disclaimer).