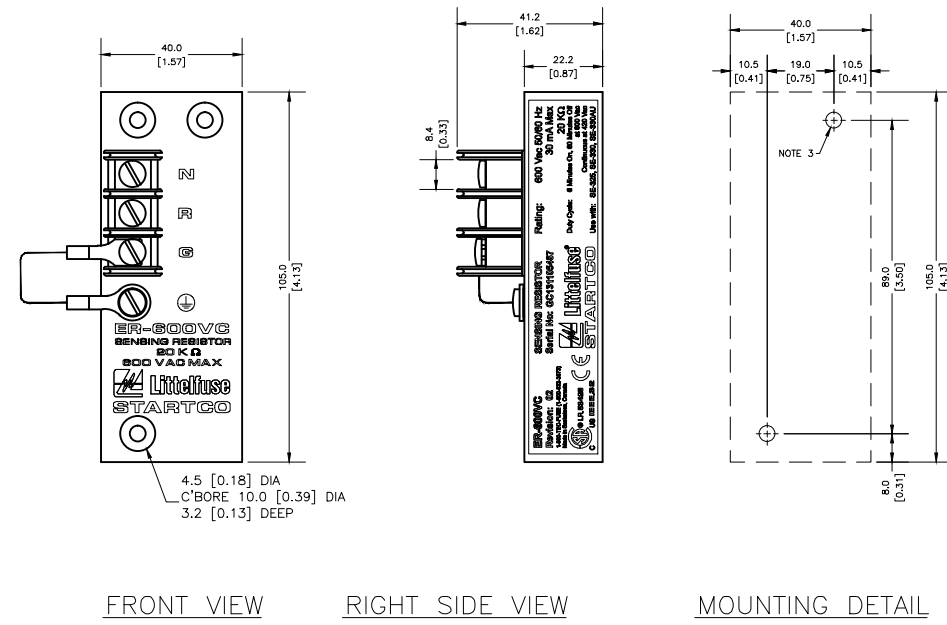


RATINGS:

MAXIMUM VOLTAGE	600 Vac
MAXIMUM CURRENT	30 mA
RESISTANCE	20 kΩ
THERMAL:	
600 Vac	6 MINUTES ON 60 MINUTES OFF
420 Vac	CONTINUOUS



- NOTES:
1. DIMENSIONS IN MILLIMETERS [INCHES]
 2. TERMINAL-BLOCK SCREWS: 6-32 X 0.25
 3. MOUNTING SCREWS: M4 OR 8-32
 4. ON REVISION 2 UNITS ENCLOSURE IS ELECTRICALLY CONNECTED TO TERMINAL G THROUGH JUMPER FROM TERMINAL G TO Ⓧ SCREW. THIS CONNECTION MAY BE REMOVED FOR DIELECTRIC STRENGTH TESTING. ENSURE THAT THE JUMPER IS INSTALLED AFTER TESTING.
 5. ON REVISION 1 UNITS, Ⓧ SCREW IS NOT PRESENT AND ENCLOSURE IS ELECTRICALLY CONNECTED TO TERMINAL G.
 6. NOT ALL CERTIFICATIONS SHOWN.

RELEASE TO WEB	A	15NOV13
DESCRIPTION	REV.	DATE
DWG. NO. ER-600VC	REV.	A