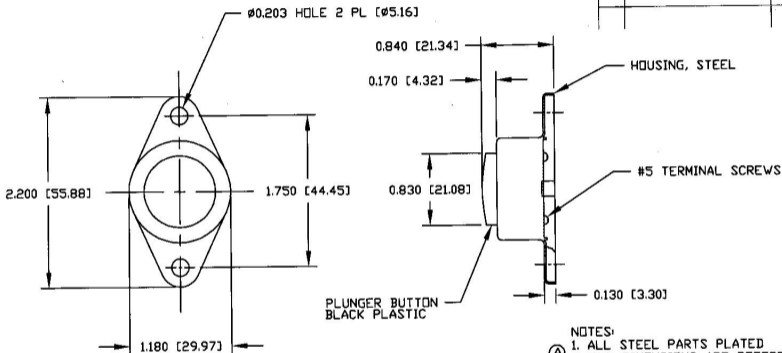


Rev.	Description of Change	ECN No.	Date
A	NOTES	00857	12/8/00



## NOTES:

- (A) 1. ALL STEEL PARTS PLATED  
2. ALL DIMENSIONS ARE REFERENCE ONLY

**Tolerances** Unless otherwise specifically noted, the following are default tolerances:  
 \* 2-place Decimal Dimensions  $\pm .02"$   
 \* 3-place Decimal Dimensions  $\pm .005"$   
 \* Angular Dimensions  $\pm 1.0$  Deg.  
 \* Metric: Refer to equivalent English Dimension Tolerance.  
 >>> NOTE: All tolerances are Non-Conservative. <<<

**Dimensional Units** All dimensions are expressed in inches except those shown in brackets (mm) are expressed in millimeters.

"N/A" or an Asterisk (\*) = Non-Tolerance Reference Dimension, shown for clarification purposes only.

**PROPRIETARY INFORMATION** This Engineering Drawing, and the information contained herein, is proprietary to Cole Hersee Company and may not be disclosed, re-produced, or in any other way transferred or communicated to any other party without the express written consent of an authorized representative of Cole Hersee Company.

**DESIGN CONTROL** It is the responsibility of the individual using/referencing this drawing to assure that the noted design revision level agrees with the revision level of the Controlled Document (Master Drawing). This is a NON-CONTROLLED DOCUMENT unless otherwise specifically noted.

**DO NOT SCALE** - Dimensional variation may occur during printing/ reproduction.

## Key for Special Characteristics:



Critical Characteristic, relating to Safety and/or Regulatory Compliance



Significant Characteristic relating to Process Control (SPC)



Control Dimension relating to Form - Fit - Function as defined by Cole Hersee Company and/or the Customer

(Note that the identification of any Characteristic as being "Special" does not alter the requirement that ALL specified dimensions & tolerances must be met.)

## Cole Hersee Co.



20 Old Colony Ave., South Boston, MA, 02127  
 PHN: 617-268-2100 Web: www.colehersee.com

Description: HORN BUTTON SWITCH

Drawing/  
Part No.:

96101

Current Rev.

A

Used On  
or Ref.:

Scale: 1:1

Drawn By: RW

Date Drawn: 2/2/71

Responsible Engineer: N/A

Pg. 1 of 1