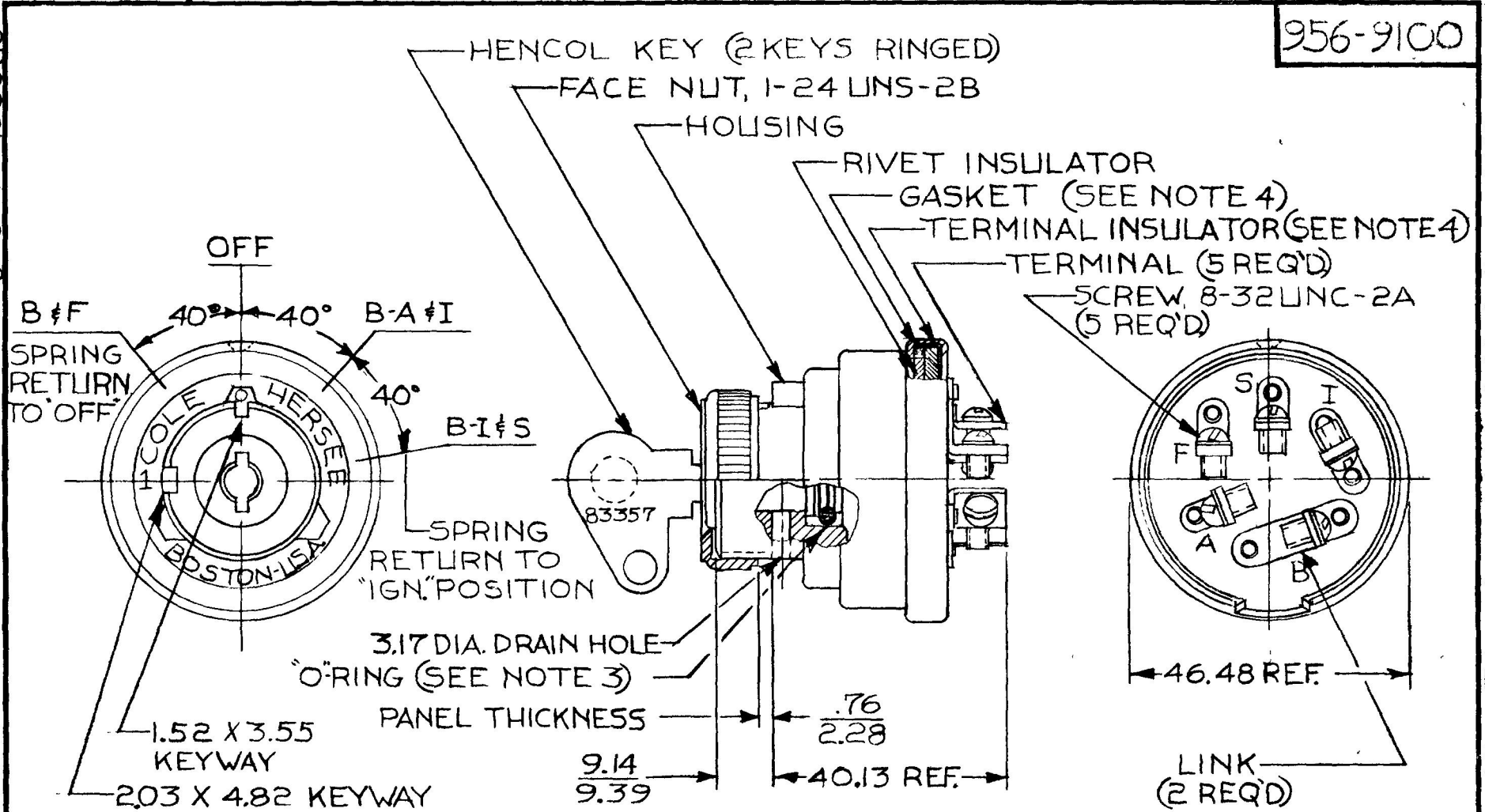


MM IN
 .25 .010
 .76 .030
 1.52 .060
 2.03 .080
 2.28 .090
 3.17 .125
 3.55 .140
 4.82 .190
 9.14 .360
 9.39 .370
 40.13 1.580
 46.48 1.830

956-9100



NPM 6-8-71
 EX 15941-A

LEGEND		
BAT	CIRCUIT	B
ACC	"	A
IGN	"	I
START	"	S
FUEL	"	F

METRIC

- NOTES:
1. APPLICABLE SAE STANDARD OR RECOMMENDED PRACTICE SAE J 259
 2. ALL STEEL PARTS PLATED
 3. SHAFT "O"RING SEALED TO HOUSING
 4. TERMINAL INSULATOR GASKET SEALED

DO NOT SCALE

LET	WAS	DATE	BY	LET	WAS	DATE	BY	MATERIAL	DRAWN	CHECKED	APPRV'D	SCALE	DATE DRAWN
								#	RW	6-11-80		1:1	6-10-71
								FINISH					DATE BLUEPRINT
								TOLERANCES					
								DECIMAL ±					
								METRIC ± .25					
					F	REDRAWN	4-30-80						
													956-9100

CH Cole Hersee Co.
 20 OLD COLONY AVENUE SOUTH BOSTON MA U.S.A. 02127

IGN & START SW.
 (4 POSITION)

CH-188(4-78)