

APPLICABLE SAE STANDARD OR RECOMMENDED PRACTICE SAE J259

956-5109

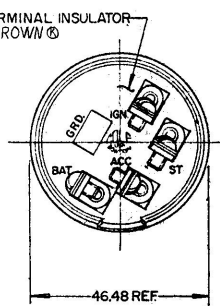
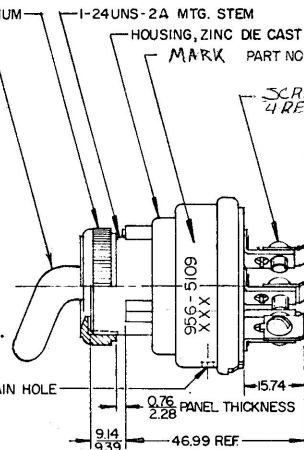
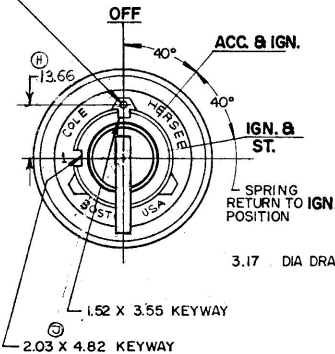
FACE NUT, ALUMINUM
 LEVER, ZINC DIE CAST, CHROME PLT.
 HOUSING, ZINC DIE CAST
 MARK PART NO. & DATE CODE AT RANDOM (N)

1.57 DIA. x 1.01 HIGH PIN

SCREW, # 8-32, & LOCKWASHER
 4 REQ'D (M)

MM
 0.001
 0.002
 0.005
 0.010
 0.020
 0.030
 0.040
 0.050
 0.062
 0.080
 0.090
 0.100
 0.125
 0.150
 0.160
 0.170
 0.200
 0.250
 0.300
 0.375
 0.450
 0.500
 0.562
 0.625
 0.750
 0.875
 1.000
 1.250
 1.500
 1.750
 2.000

11 P.M. 9-28-71
 -3X-16009C



- NOTE:
 1. TERMINAL INSULATOR GASKET SEALED
 2. SHOULDER TYPE RIVET CONSTRUCTION
 3. SILVER LAMINATED CONTACT SURFACES
 4. ALL STEEL PARTS PLATED

METRIC

Confidential Property of Cole Hersee

DO NOT SCALE

LET	WAS	DATE	BY	LET	WAS	DATE	BY	MATERIAL	DRAWN	CHECKED	APPR'D	SCALE	DATE DRAWN
				L	ZINC	25034	12/29/70	54	—	RW	1-30-71	1:1	9-16-71
				K	ECN	25189	8/13/72	54	FINISH				
				J	DELTA NOTE	23263	9-30-86	ZU	—				
N	ECN #00422	6/6/08	MK	H	REVISED	22457	6/6/04	1/4X	TOLERANCES				
M	ECN 00137	3/1/00	WH	G	REDRAWN		1-19-78		FRACTIONAL ±				
									DECIMAL ± .25				

ALL EXCEPT 3-POS
 & W/SCREW TERM. &
 LEVER

Cole Hersee Co.
 HEADQUARTERS: MILWAUKEE, WISCONSIN

3 - POSITION
 IGNITION & START SWITCH

956-5109

DATE BLUEPRINT