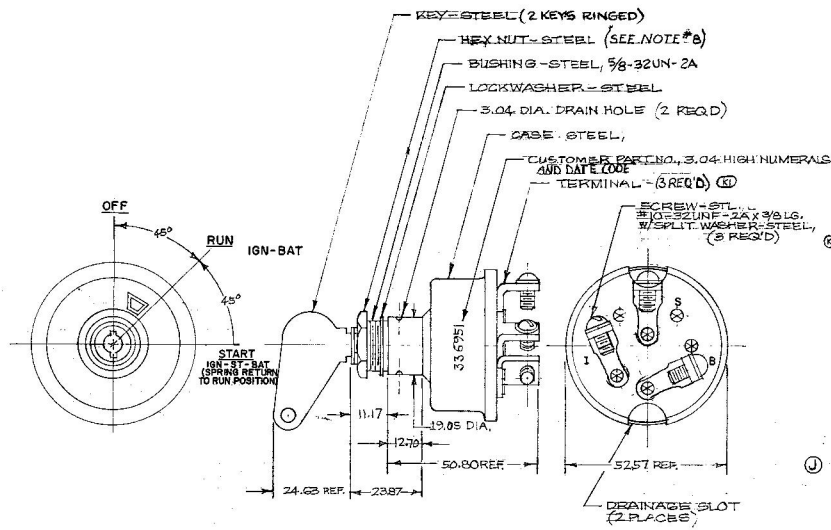


COLE-HERSEE CO.

EX-14892



**NOTES**

1. SILVER LAMINATED CONTACTS IN START POSITION
2. NUMBER OF POLES : 1  
NUMBER OF THROWS : 2
3. SEALING : 1/16" RING AT MTDG. STEM & SHAFT
- ④ 4. ALL STEEL PARTS PLATED
5. RATING:  
12V - 70 AMP COMBINED LOAD  
24V - 30 AMP COMBINED LOAD  
LIFE @ RATED CURRENT  
MAKE AND BREAK  
12V - 25,000 CYCLES  
24V - 10,000 CYCLES
6. KEY REMOVABLE IN OFF POSITION ONLY.
7. APPLICABLE SAE STANDARD OR RECOMMENDED PRACTICE SAE J269
- ① 8. INSTALLATION TORQUE 6.75 Nm [5FT. LBS.]

| LEGEND |          |
|--------|----------|
| I      | IGNITION |
| S      | START    |
| B      | BATTERY  |

**METRIC**

| LET | WAS | DATE | BY | LET | WAS | DATE | BY | MATERIAL | FINISH | TOLERANCES:<br>FRACTIONAL ± .38<br>DECIMAL ± .25 |
|-----|-----|------|----|-----|-----|------|----|----------|--------|--|
|     |     |      |    |     |     |      |    |          |        |  |
|     |     |      |    |     |     |      |    |          |        |  |
|     |     |      |    |     |     |      |    |          |        |  |
|     |     |      |    |     |     |      |    |          |        |  |

DO NOT SCALE

SCALE: FULL HOLES IN CASE & TERM. INOUL...  
**COLE-HERSEE COMPANY**  
 BOSTON, MASS. 02127, U.S.A.

DATE DRAWN: 9-15-67  
 DATE BLUEPRINT:  
**HEAVY DUTY IGNITION SW.**