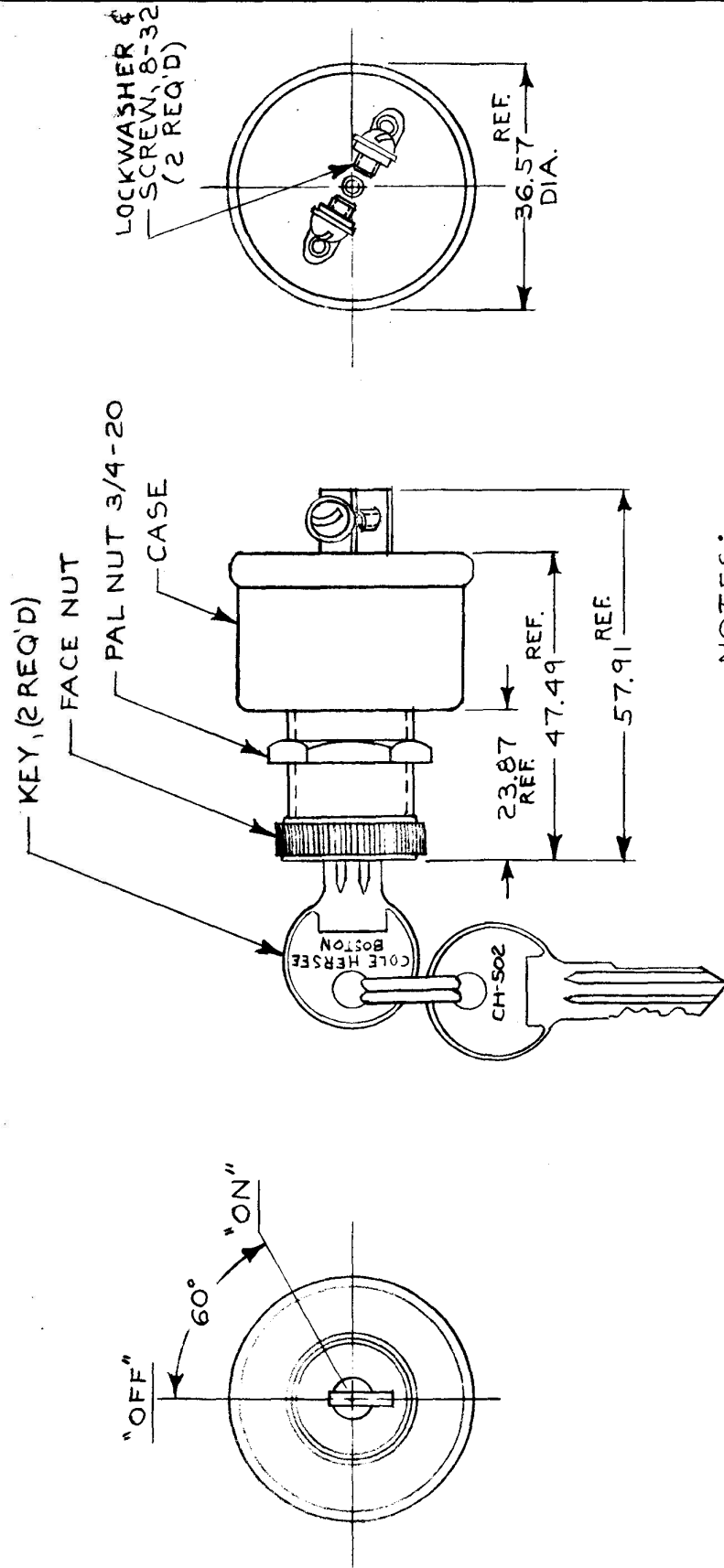


APPLICABLE SAE STANDARD OR  
RECOMMENDED PRACTICE SAE J259

9518

MM IN  
19.05 .750  
22.22 .875  
23.87 .940  
36.57 1.440  
47.49 1.870  
57.91 2.280



NOTES:

1. 8367 ADAPTER FACE NUT PERMITS ASSY OF SWITCH TO 19.05 & 22.22 DIA. PANEL HOLES.
2. 250 KEY COMBINATIONS; REMOVABLE IN BOTH POSITIONS.
3. ALL STEEL PARTS PLATED.

METRIC

DO NOT SCALE

LET.	WAS	DATE	BY/LET	WAS	DATE	BY	MATERIAL	DRAWN	CHECKED	APPROV'D	SCALE	DATE DRAWN
							AK	JP	AK		1:1	3-27-58
							FINISH AK					DATE BLUEPRINT
							TOLERANCES DECIMAL ± METRIC ±					
				K	REDRAWN	5/5/86	AK					
												9518

**CH** Cole Hersee Co.  
201 D COLONY AVE. - BOSTON, MA. U.S.A. 02127

SWITCH, S.P.S.T. LOCK

CH-188(4-78)

BRUNNING 40-21 6375