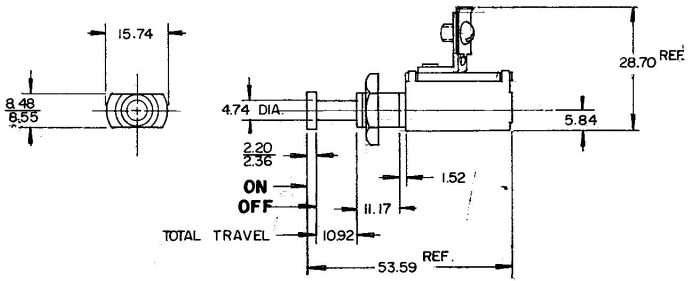
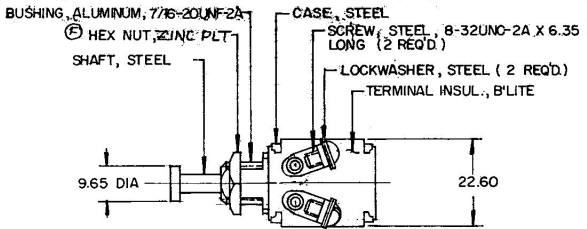


MM	IN
2.25	.010
2.20	.087
2.36	.093
1.92	.060
4.74	.187
5.84	.230
6.35	.250
8.48	.334
8.55	.337
9.45	.380
10.92	.430
11.17	.440
15.74	.620
22.60	.890
28.70	1.200
53.59	2.110

9264



NOTE:  
 Ⓢ ALL STEEL PARTS PLATED.

METRIC

Confidential Property of Cole Hersee

DO NOT SCALE

LET.	WAS	DATE	BY	LET	WAS	DATE	BY	MATERIAL	DRAWN	CHECKED	APPR'D	SCALE	DATE DRAWN
								— # —	EA	5-18-79		1:1	5 - 5 - 59
								FINISH					DATE BLUEPRINT
				G	CADOR ZINC 25234	11/14/72	JH		 Cole Hersee Co. <small>29 GOLD COUNTRY AVENUE, SOUTH BOSTON, MASS. 02127</small>				
				F	REV/20.975	10-15-80	CS	TOLERANCES					
				E	REDRAWN	5-17-79	JV	DECIMAL ±	<b>DOOR SWITCH</b>				<b>9264</b>
								METRIC ±0.25					