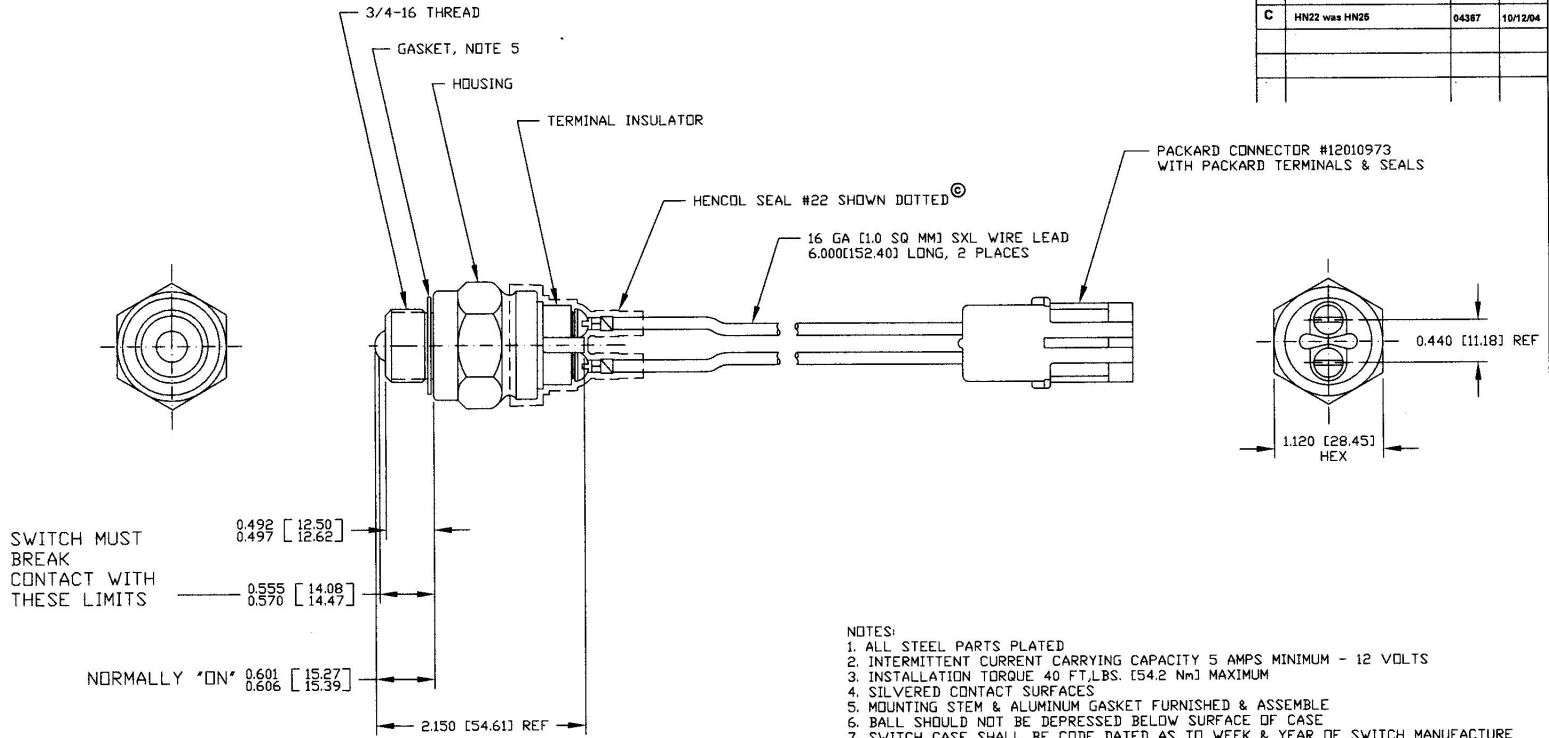


Revision Control Record			
Rev.	Description of Change	ECN No.	Date
B	GASKET	01205	4/10/01
C	HN22 was HN25	04387	10/12/04



- NOTES:
1. ALL STEEL PARTS PLATED
  2. INTERMITTENT CURRENT CARRYING CAPACITY 5 AMPS MINIMUM - 12 VOLTS
  3. INSTALLATION TORQUE 40 FT.LBS. [54.2 Nm] MAXIMUM
  4. SILVERED CONTACT SURFACES
  5. MOUNTING STEM & ALUMINUM GASKET FURNISHED & ASSEMBLE
  6. BALL SHOULD NOT BE DEPRESSED BELOW SURFACE OF CASE
  7. SWITCH CASE SHALL BE CODE DATED AS TO WEEK & YEAR OF SWITCH MANUFACTURE

**Tolerances:** Unless otherwise specifically noted, the following are typical tolerances:  
 • Unless Specified Dimensional:  $\pm 0.005$   
 • Unless Specified Dimensional:  $\pm 0.002$   
 • Angular Dimensional:  $\pm 0.10$  Deg.  
 • Material: Refer to applicable English Dimensional Tolerances  
 \*\*\* NOTE: All tolerances are Non-Cumulative \*\*\*

**Dimensional Note:** All dimensions are expressed in inches except those shown in brackets ( ) are expressed in millimeters.

**SEE "C" on Attachment "C" - Non-Toleranced Reference Dimension, shown for identification purposes only.**

**PROPRIETARY INFORMATION:** This Engineering Drawing, and the information contained herein, is proprietary to Cole Hersee Company and may not be disclosed, reproduced, or in any way transmitted or communicated to any other party without the express written consent of an authorized representative of Cole Hersee Company.

**DESIGN CONTROL:** It is the responsibility of the individual using/replicating this drawing to ensure that the metal swage section used agrees with the revision level of the Certified Dimensional Master Drawing. This is a NON-CONTROLLED DOCUMENT unless otherwise specifically noted.

**DO NOT SCALE:** Dimensional variation may occur during printing/ reproduction.

**Key for Special Characteristics:**

- ⊕ Critical Characteristics, relating to Safety and/or Regulatory Compliance.
- ⊗ Significant Characteristics relating to Process Control (SPC).
- ⊕ Control Dimension (relating to Form - F) - Position as defined by Cole Hersee Company and/or the Customer.

Note that the identification of any Characteristics as being "Special" does not alter the requirement that ALL specified dimensions & tolerances must be met.

**Cole Hersee Co.**  
 20 Old Colony Ave., South Boston, MA, 02127  
 Phone 617-268-3100 Web: www.colehersee.com

**Description:** SWITCH, BALL, NC

**Drawing / Part No.:** 9224-26

**Current Rev.:** C