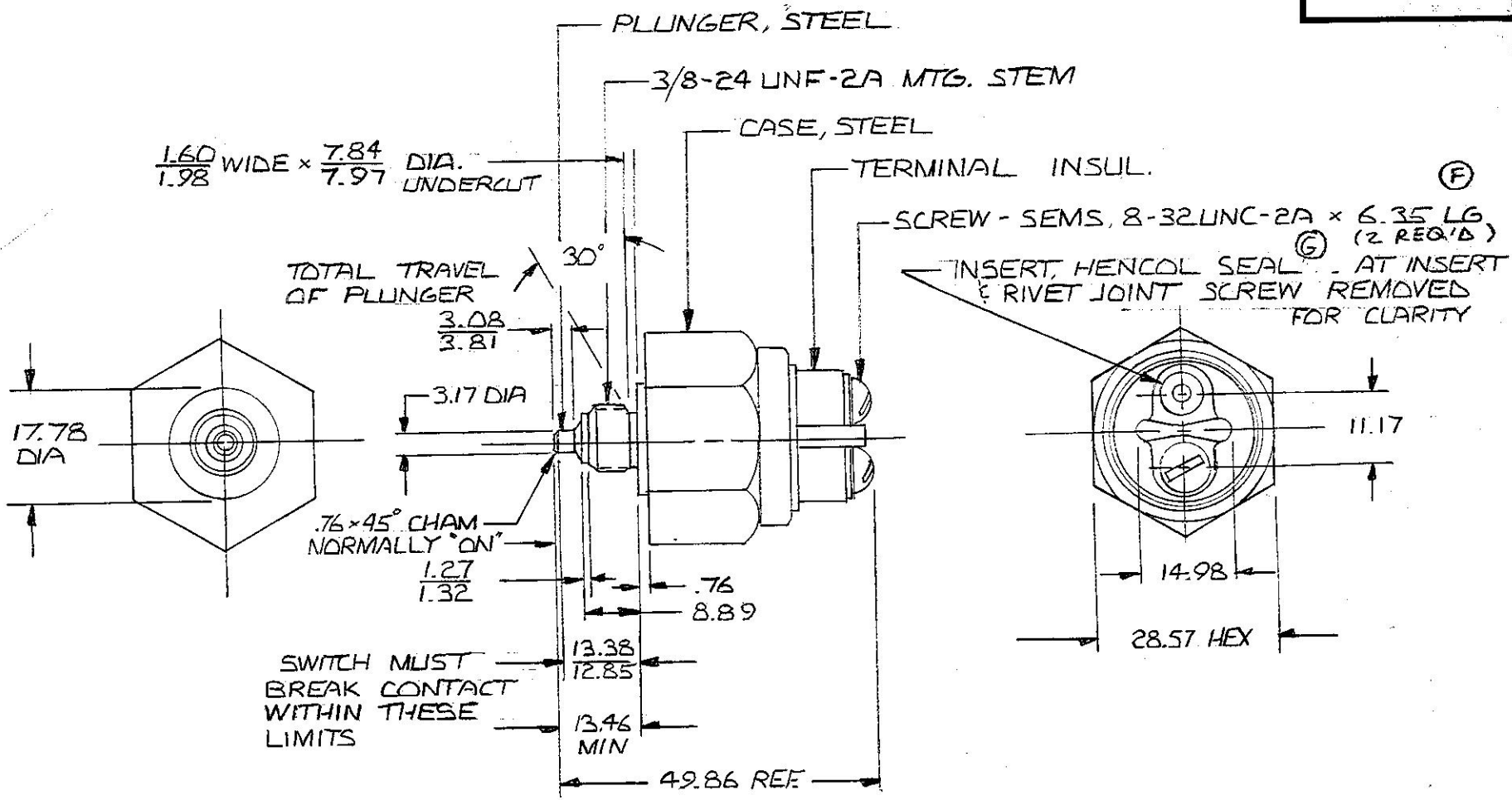


MM IN

|       |       |
|-------|-------|
| 76    | .030  |
| 27    | .050  |
| 32    | .052  |
| 60    | .063  |
| 98    | .078  |
| 08    | .121  |
| .81   | .150  |
| .35   | .250  |
| 7.84  | .309  |
| .97   | .314  |
| .89   | .350  |
| 1.17  | .440  |
| 2.85  | .506  |
| 3.38  | .527  |
| 3.46  | .530  |
| 4.98  | .600  |
| 7.78  | .700  |
| 8.57  | .1125 |
| 19.86 | 1.963 |
| 3.17  | .125  |

EX18582



CONFIDENTIAL PROPERTY OF COLE HERSEE

3 AMPS @ 24 VDC  
5 AMPS @ 12 VDC

- NOTES =
1. ALL STEEL PARTS EITHER ZINC PLT W/ DICH DIP OR CAD PLT
  2. SILVER CONTACT SURFACES
  3. MAX ALLOWABLE TORQUE OF 10.85 N-m [8 FT-LBS] TO TIGHTEN SWITCH IN ITS ASSEMBLY

METRIC

DO NOT SCALE

| LET.  | WAS | DATE | BY | LET | WAS         | DATE    | BY | MATERIAL     | DRAWN | CHECKED | APPR'D | SCALE             | DATE DRAWN     |
|---|-----|------|----|-----|-------------|---------|----|--------------|-------|---------|--------|-------------------|----------------|
|   |     |      |    |     |             |         |    | #            | DRS   | SJB     |        | 1:1               | 5-12-80        |
|   |     |      |    |     |             |         |    | FINISH       |       |         |        |                   | DATE BLUEPRINT |
|   |     |      |    | G   | ECN # 07333 | 8/17/01 | SG | #            |       |         |        |                   |                |
|   |     |      |    | F   | ECN 02226   | 5-7-02  | ML | TOLERANCES   |       |         |        |                   |                |
|   |     |      |    | E   | REDRAWN     | 6-6-88  | JK | DECIMAL ±    |       |         |        |                   |                |
|   |     |      |    |     |             |         |    | METRIC ± .25 |       |         |        |                   |                |
| <p>Cole Hersee Co.<br/>25 OLD COLONY AVENUE, SOUTH BOSTON, MA, U.S.A. 02127</p> |     |      |    |     |             |         |    |              |       |         |        | INDICATOR LAMP SW | 92120          |