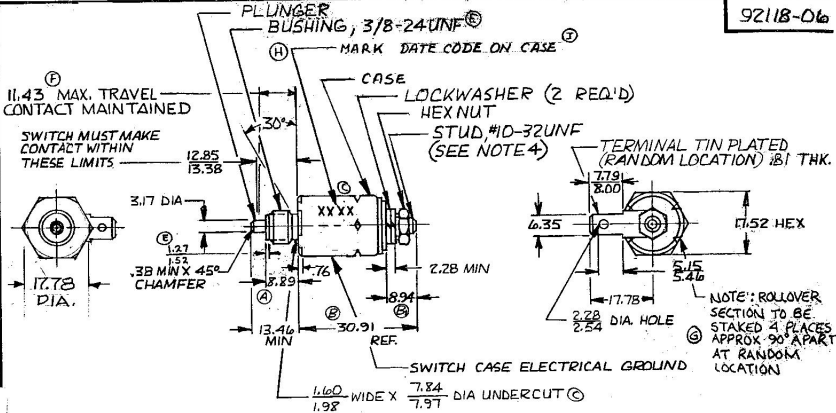


MM IN
 .25 .010
 .38 .015
 .43 .025
 .81 .032
 1.01 .040
 2.28 .090
 2.54 .100
 3.04 .120
 3.17 .125
 5.15 .203
 5.40 .215
 8.89 .350
 7.19 .307
 9.00 .315
 9.94 .352
 12.85 .506
 13.38 .527
 13.40 .530
 17.54 .690
 17.78 .700
 30.91 1.217
 1.60 .063
 1.98 .078
 7.84 .309
 7.97 .314
 17.78 .700
 1.76 .030
 1.27 .050
 1.52 .060
 11.43 .450

EX19319

92118-06



NOTES:

1. SEALED AT TERMINAL INSULATOR
3. 2.82 N·m [25 IN·LB] TORQUE APPLIED TO STUD SHALL NOT AFFECT THE PHYSICAL INTEGRITY OF THE SWITCH
4. 10.84 N·m [8 FT·LB] MAX. INSTALLATION
5. ALL STEEL PARTS PLATED
6. 5 AMPS @ 24V DC

METRIC

Confidential Property of Cole Hersee

DO NOT SCALE

LET.	WAS	DATE	BY	LET	WAS	DATE	BY	MATERIAL	DRAWN	CHECKED	APPROV'D	SCALE	92118-01 WITH GASKET	DATE DRAWN				
J	ECN # 02275	6/1/02	MD		REV 21778	8-4-82	PS	-H-	(S)	RJZ		1:1		4-29-81				
H	PART NO. RELEASE	23106	10-15-87	AF	C	ADD & ROUND REWORK CUT	21731	5-28-82	(S)					DATE BLUEPRINT				
G	ADD NOTE	22199	8/17/87	MS	B	3.4.0.3	21684	4-12-81	RG									
F	DELETED NOTE	22096	4-29-85	PS	A	250/21680	12-9-81	(S)										
E	ADD	21836	9-2-82	PS		ISSUED	5-5-81	ELJ										
TOLERANCES DECIMAL ± .25 METRIC ± .25													CH: Cole Hersee Co. <small>MEMPHIS, TENNESSEE 38114 U.S.A.</small>		MOMENTARY SWITCH		92118-06	