

9055-02

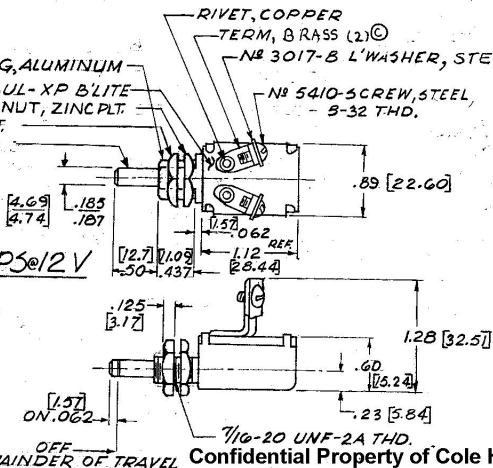
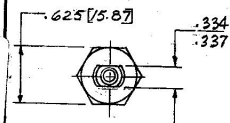
NOTE:

ⓑ ALL STEEL PARTS PLATED

#83588 BUSHING, ALUMINUM
 TERM. INSUL-XP B'LITE
 ⓐ PAL'NUT, ZINC PLT.
 ⓑ HEX NUT ZINC PLT.
 SHAFT-STEEL

RIVET, COPPER
 TERM, BRASS (2) ⓐ
 № 3017-B L'WASHER, STEEL
 № 5410-SCREW, STEEL,
 - 5-32 THD.

RATING 30 AMPS @ 12 V

OFF
REMAINDER OF TRAVEL

Confidential Property of Cole Hersee

DO NOT SCALE

LET	WAS	DATE	BY	LET	WAS	DATE	BY	MATERIAL	DRAWN	CHECKED	APPROV'D.	SCALE	DATE DRAWN
									SB	9fd	2 JAN 74	1=1	12-28-73
				C	TERM	02/02	1/19/02	AA					DATE BLUEPRINT
				B	22049	25239	11/13/92	54					
				A	REV/20975		10-9-80	ⓐ					
					ISSUED		1-14-74	RY					9055-02
TOLERANCES FRACTIONAL ± DECIMAL ±									COLE-HERSEE COMPANY BOSTON, MASS. 02127, U.S.A.				DOOR SWITCH