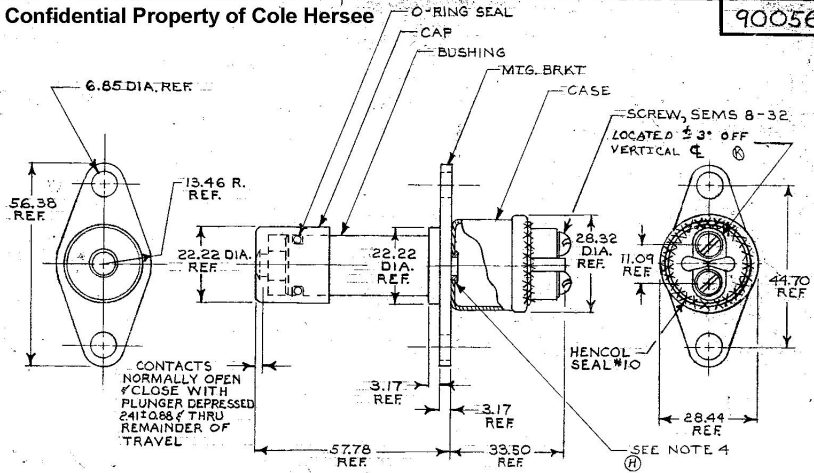


MM. IN  
 0.88 .035  
 2.41 .095  
 3.17 .125  
 6.85 .270  
 11.09 .437  
 13.46 .530  
 22.22 .875  
 28.32 1.115  
 28.44 1.120  
 33.50 1.319  
 44.70 1.760  
 56.38 2.220  
 57.78 2.275

90056

Confidential Property of Cole Hersee



EX-14168-B

**METRIC**

- ① 6. MARK DATE CODE ON CASE IN RANDOM LOCATION
- ② 7. YELLOW DOT FOR IDENTIFICATION ONLY, ON CASE IN RANDOM LOCATION

| LET. | WAS | DATE | BY | LET. | WAS                 | DATE     | BY | MATERIAL              | DRAWN | CHECKED | APPROVD. | SCALE | DATE DRAWN     |
|------|-----|------|----|------|---------------------|----------|----|-----------------------|-------|---------|----------|-------|----------------|
|      |     |      |    | L    | ECN 02103           | 5/14/02  | ML |                       | EA    |         |          | 1:1   | 1-5-78         |
|      |     |      |    | K    | ECN 26621           | 4/11/97  | ML | FINISH                |       |         |          |       | DATE BLUEPRINT |
|      |     |      |    | J    | ECN 26379           | 11/2/96  | AF |                       |       |         |          |       |                |
|      |     |      |    | H    | ADD HENCOL 13/22843 | 9-13-84  | AK | TOLERANCES            |       |         |          |       |                |
|      |     |      |    | G    | REDRAWN             | 10-29-84 | AK | DECIMAL ±<br>METRIC ± |       |         |          |       |                |

**CH. Cole Hersee Co.**  
 5010 COLONY PARK, SMITHSONIAN, U.S.A. 21117

**FOOT SWITCH 90056**