

# Installation Instructions

75940 Series

32V DC 300A SPST Master Battery Disconnect Switch

Part Numbers: 75940-01, 75940-02, 75940-03, 75940-01-BP, 75940-02-BP, 75940-03-BP



Expertise Applied | Answers Delivered



## Installation

Assemble the "Switch" in the following sequence:

1. Remove the handle, using a #1 Phillips head screw driver, being sure the switch is in the OFF position. (ref. picture #1)
2. Insert an M8 standard nut (included with product) in each of the 2 seats of the housing. Make sure they click in place, becoming captive. (ref. pictures #2 and #3)
3. Insert the switch in the suitable seat (chassis or bracket, with 8.5mm max thickness provided with holes as per mounting template). Fix it by means of two M8 standard screw (included with product) to be tightened with a torque of  $14\pm 2\text{Nm}$ . (ref. pictures #4, #5, #6 and #7)
4. Mount the power cables on the M10 stud. Fix them with tightening torques of  $18\pm 2\text{Nm}$ . (ref. pictures #8 and #9)
5. Mount the handle by tightening the provided screw to a torque of  $0.6\pm 0.2\text{Nm}$ , by using a #1 Phillips head screw driver. (ref. pictures #10 and #11)

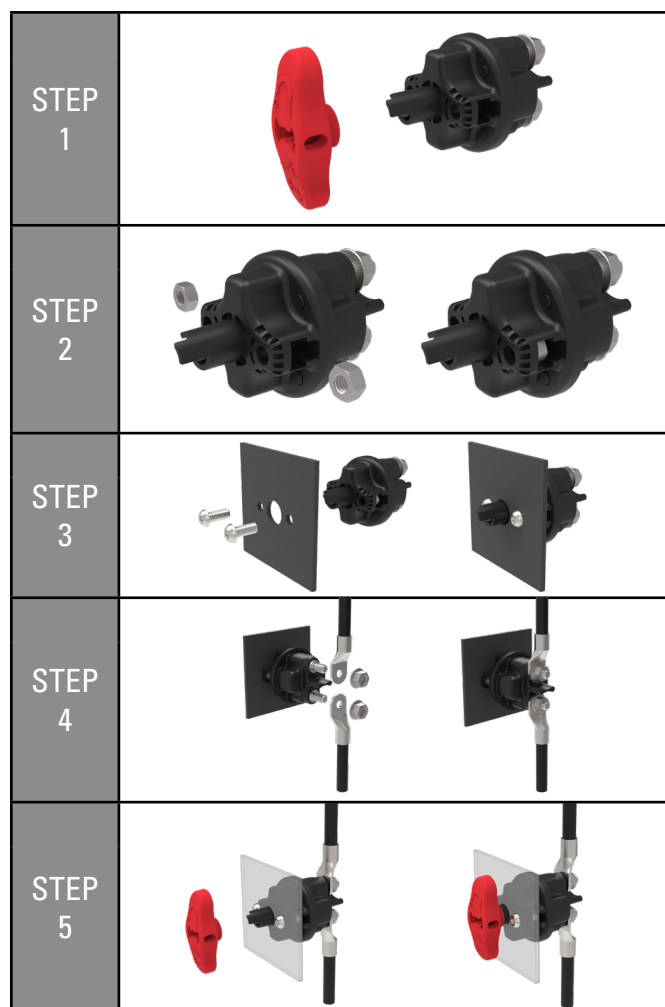
## Description

With a patented weld breaker safety feature and integrated lockout/tagout, the 75940-Series Battery Master Disconnect Switch is designed for safely cutting off battery power to all electrical systems aboard heavy-duty vehicles and equipment used in mining, agriculture, construction, and transportation.

This single-pole, single throw (SPST) manual battery disconnect switch is constructed with a robust engineered polymer housing, offering a contemporary design that stands up to the harsh conditions typically found in commercial vehicle environments. Carrying an IP67/IPX9K rating, the switch is protected against dust, debris, and water.

## Ordering Information

PART NUMBERS	DESCRIPTION
75940-01	Master Disconnect Switch, red handle, bulk packaging
75940-02	Master Disconnect Switch, yellow handle, bulk packaging
75940-03	Master Disconnect Switch, black handle, bulk packaging
75940-01-BP	Master Disconnect Switch, red handle, blister packaging
75940-02-BP	Master Disconnect Switch, yellow handle, blister packaging
75940-03-BP	Master Disconnect Switch, black handle, blister packaging



## Web Resources

Download datasheet, 2D print, 3D model and more at:  
[Littelfuse.com/75940](http://Littelfuse.com/75940)

Specifications, descriptions and illustrative material in this literature are as accurate as known at the time of publication, and are subject to changes without notice. Visit [littelfuse.com](http://littelfuse.com) for the most up-to-date technical information.

# Installation Instructions

75940 Series

32V DC 300A SPST Master Battery Disconnect Switch

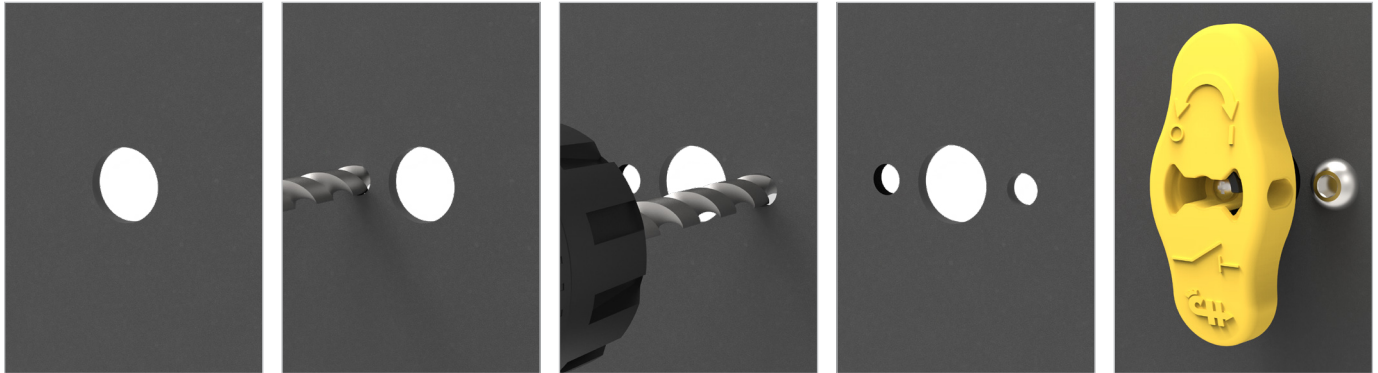


Expertise Applied | Answers Delivered

## Installation Diagram

### Mounting Drill Holes

Additional mounting holes may be necessary when installing the Master Battery Disconnect Switch. A drill bit of 8.5mm or Imperial bits of 11/32" or 3/8" is required for clearance around the switch's 8mm mounting bolts.



### Terminals



### Integrated Lockout/Tagout

Accepts a 6.5-millimeter shackle for enhanced safety and security.

